

Teilebuch

Quat 170 Overland

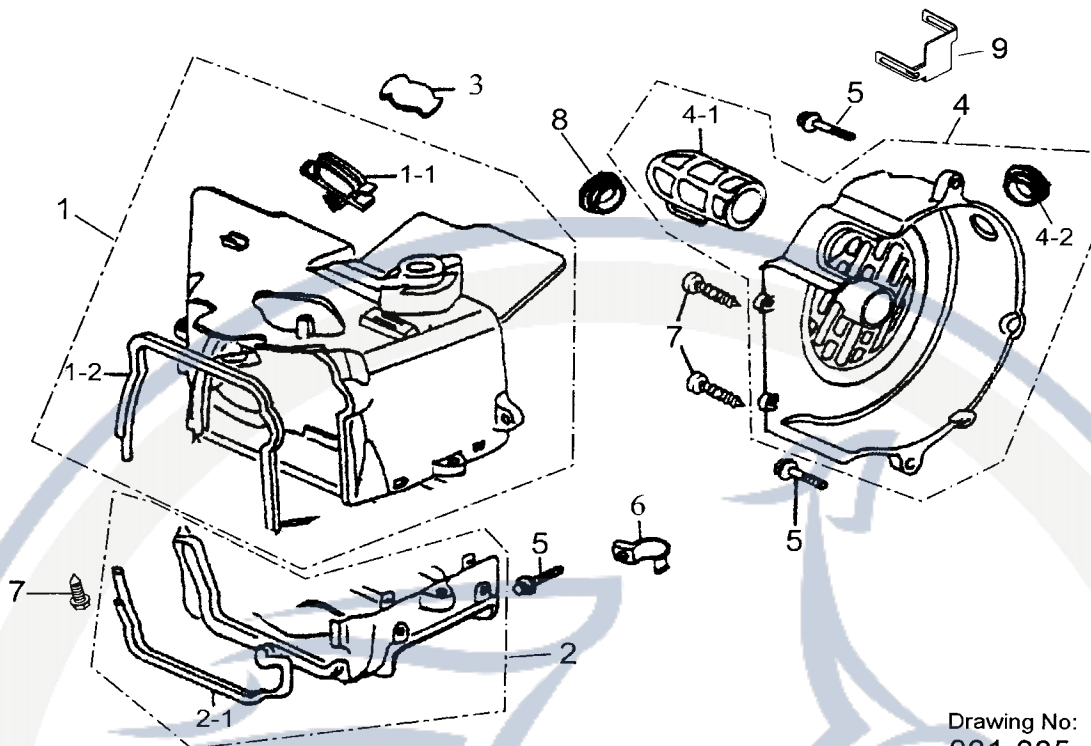
Motorroller.de
- seit 1993 -

Friedrich Epple GmbH
Im Erlengrund 1
64678 Lindenfels, OT Eulsbach
Tel.: 06255 30030
E-Mail: info@motorroller.de
Web: www.motorroller.de



Motorroller.de
- seit 1993 -

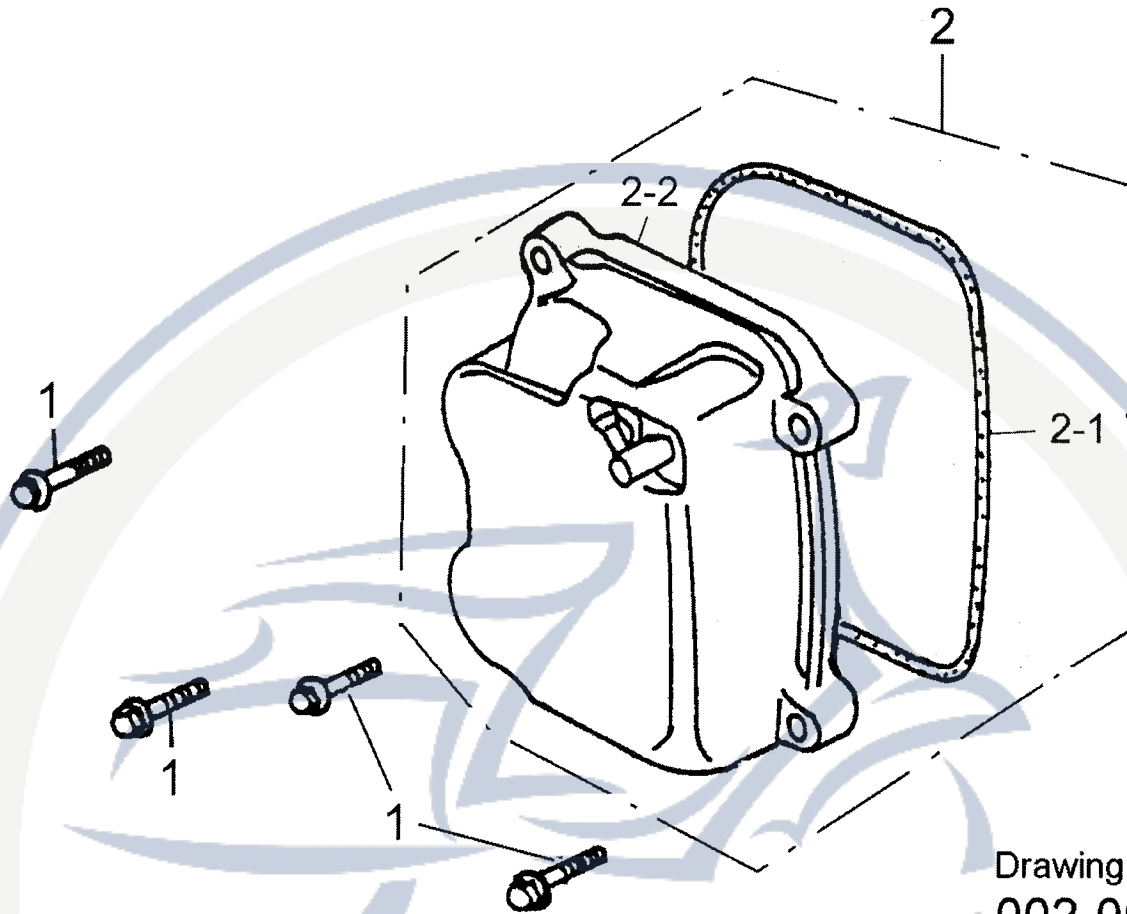
D-1 FAN COVER,SHROUD 風扇蓋,引擎罩蓋



Drawing No:
001-005

| SALES MARK | P/N | DESCRIPTION | PART NO. | CUSTOMER NO. | CHINESE | Q'TY |
|------------|-------|---------------------------|----------------|--------------|---------|------|
| 販賣記號 | 件號 | 英文名稱 | 部品番號 | 客戶番號 | 中文名稱 | 用量 |
| | 1-1 | SHROUD - UPPER | 19623-119-000 | | 罩蓋B組合 | 1 |
| | 1-1-1 | BREATHER TUBE CLAMPER | 11384-119-000 | | 通氣管夾 | 1 |
| | 1-1-2 | SHROUD SEAL UPPER | 19635-119-000 | | 罩蓋B密合墊 | 1 |
| | 1-2 | SHROUD -LOWER | 19621-119-000 | | 罩蓋A組合 | 1 |
| | 1-2-1 | SHROUD SEAL-LOWER | 19625-119-000 | | 罩蓋A密合墊 | 1 |
| | 1-3 | RUBBER BUNG B | 19633-119-000 | | 橡皮塞B | 1 |
| | 1-4 | FAN COVER ASS' Y | 19610-119-000 | | 風扇蓋組合 | 1 |
| | 1-4-1 | CARBURETOR COOLING DUCT | 19615-119-000 | | 化油器冷卻導管 | 1 |
| | 1-4-2 | RUBBER BUNG | 17529-119-000 | | 橡皮塞 | 1 |
| | 1-5 | HEX FLANGE | 96000-06025-8C | | 六角緣面螺栓 | 3 |
| | 1-6 | CLAMPER CARB DRAIN TUBE | 11353-119-000 | | 溢油管夾 | 1 |
| | 1-7 | CROSS TAPPING SCREW | 93904-05016-K | | 十字自攻螺絲 | 4 |
| | 1-8 | RUBBER CAP | 19611-156-000 | | 橡膠蓋 | 1 |
| | 1-9 | STARTER MOTOR CABLE CLAMP | 19613-119-000 | | 起動馬達導線夾 | 1 |

D-2 CYLINDER HEAD COVER 汽缸頭蓋

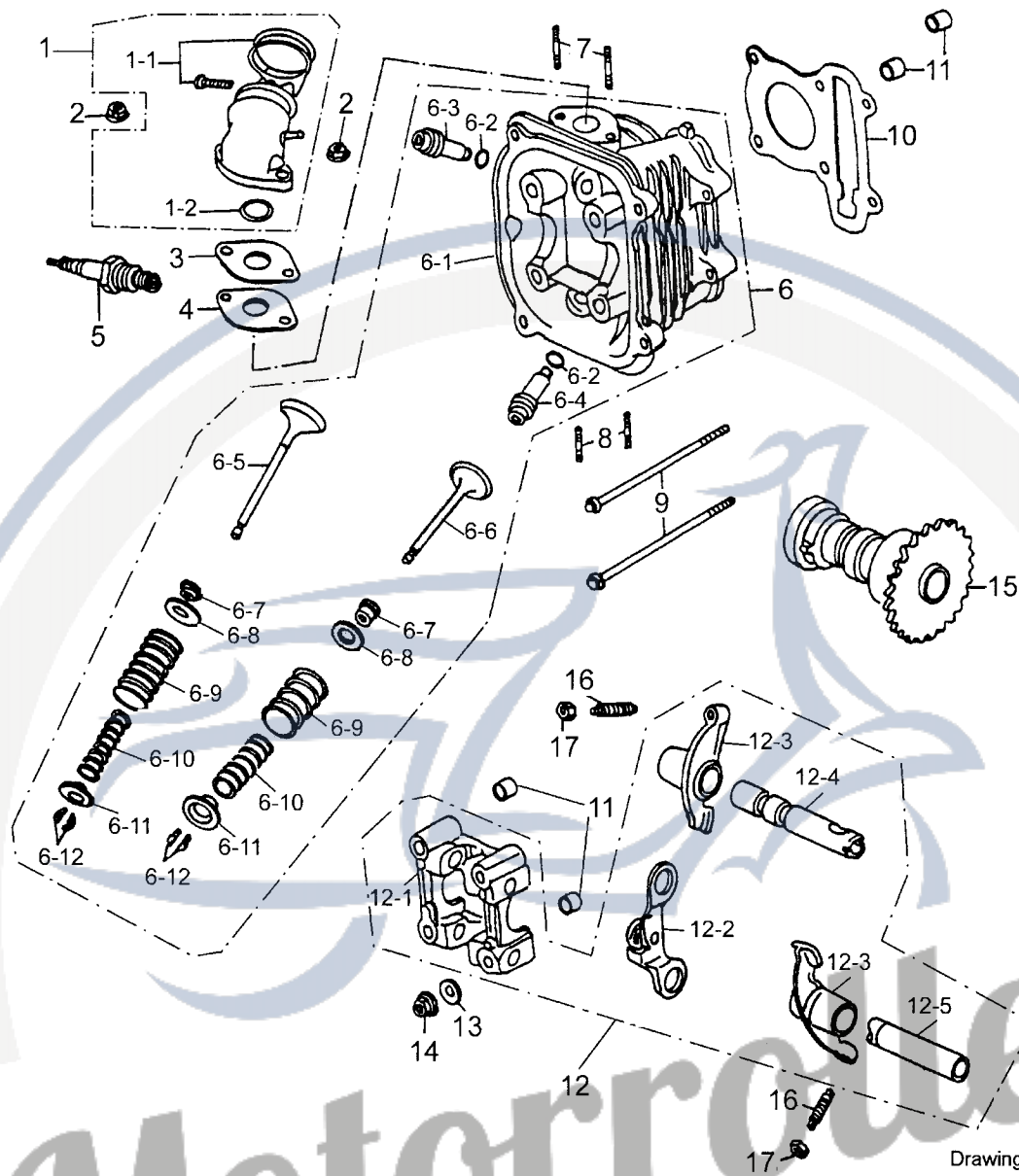


Drawing No:
002-000

Motorroller.de
- seit 1993 -

| SALES MARK | P/N | DESCRIPTION | PART NO. | CUSTOMER NO. | CHINESE | Q'TY |
|------------|-------|----------------------------|----------------|--------------|------------|------|
| 販賣記號 | 件號 | 英文名稱 | 部品番號 | 客戶番號 | 中文名稱 | 用量 |
| | 2-1 | HEX FLANGE BOLT | 96000-06025-8C | | 六角緣面螺栓 | 4 |
| | 2-2 | CYLINDER HEAD COVER ASS'Y | 12310-158-000 | | 汽缸頭蓋總成(成品) | 1 |
| | 2-2-1 | CYLINDER HEAD COVER GASKET | 12391-119-000 | | 汽缸頭蓋墊圈 | 1 |
| | 2-2-2 | CYLINDER HEAD COVER | 12309-158-000 | | 汽缸頭蓋 | 1 |

D-3 CAMSHAFT、VALVE、CYLINDER HEAD 凸輪軸,閥門 汽缸頭

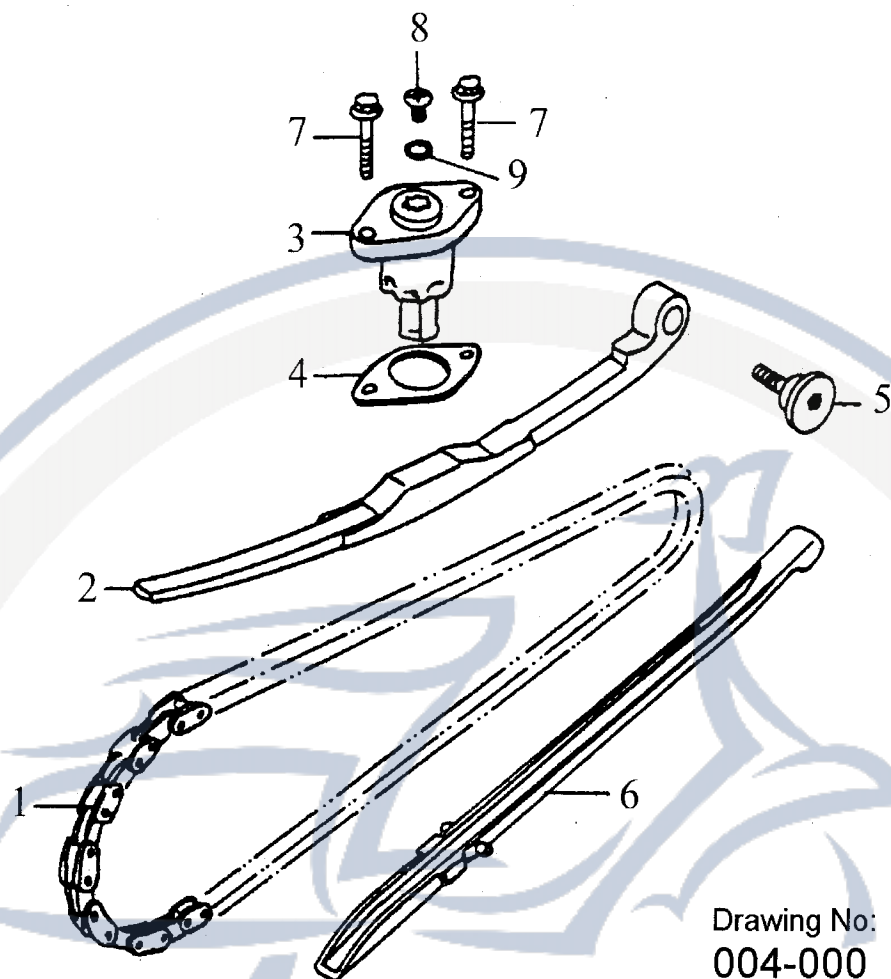


Drawing No:
003-003

| SALES MARK | P/N | DESCRIPTION | PART NO. | CUSTOMER NO. | CHINESE | Q'TY |
|------------|-------|-----------------------------|---------------|--------------|---------|------|
| 販賣記號 | 件號 | 英文名稱 | 部品番號 | 客戶番號 | 中文名稱 | 用量 |
| | 3-1 | INAKE MAINFOLD | 17100-179-000 | | 進氣歧管總成 | 1 |
| | 3-1-1 | BAND INSULATOR | 14111-119-000 | | 進氣歧管夾 | 1 |
| | 3-1-2 | OIL-RING | 91327-119-000 | | 油環 | 1 |
| | 3-2 | HEX FLANGE NUT | 94050-06000-C | | 六角緣面螺帽 | 2 |
| | 3-3 | CARBURETOR INSULATOR | 16213-119-000 | | 化油器隔熱板 | 1 |
| | 3-4 | CARBURETOR INSULATOR GASKET | 16229-119-000 | | 隔熱板墊片 | 1 |

| | | | | |
|--------|-----------------------------|-----------------|----------|---|
| 3-5 | SPARK PLUG(ANTI-RESISTANCE) | 98076-119-00A | 火星塞(抗電阻) | 1 |
| 3-6 | CYLINDER HEAD ASS'Y | 12200-158-000 | 汽缸頭組合 | 1 |
| 3-6-1 | CYLINDER HEAD | 12201-158-000 | 汽缸頭 | 1 |
| 3-6-2 | OIL-RING | 91309-119-000 | 油環 | 2 |
| 3-6-3 | IN.GUIDE VALVE | 12204-119-000 | 進氣閥導管 | 1 |
| 3-6-4 | EX.GUIDE VALVE | 12206-119-000 | 排氣閥導管 | 1 |
| 3-6-5 | EX. VALVE | 14721-122-000 | 排氣閥 | 1 |
| 3-6-6 | IN. VALVE | 14711-122-000 | 進氣閥 | 1 |
| 3-6-7 | VALVE STEM SEAL | 12209-119-000 | 門閥徑封 | 2 |
| 3-6-8 | SEAT VALVE SPRING OUTER | 14775-119-000 | 彈簧座 | 2 |
| 3-6-9 | VALVE OUTER SPRING | 14751-119-000 | 閥門外彈簧 | 2 |
| 3-6-10 | VALVE INNER SPRING | 14761-119-000 | 閥門內彈簧 | 2 |
| 3-6-11 | VALVE SPRING RETAINER | 14771-119-000 | 閥門彈簧保持座 | 2 |
| 3-6-12 | COTTER VALVE | 14781-119-000 | 閥門鎖扣 | 4 |
| 3-7 | STUD BOLT | 91001-06072-C | 雙頭螺栓 | 2 |
| 3-8 | STUD BOLT | 91001-08032-C | 雙頭螺栓 | 2 |
| 3-9 | HEX FLANGE BOLT | 96000-06100-8C | 六角緣面螺栓 | 2 |
| 3-10 | CYLINDER HEAD GASKET | 12251-158-000 | 汽缸頭墊片 | 1 |
| 3-11 | DOWEL PIN | 94301-10140 | 定位銷 | 4 |
| 3-12 | CAM SHAFT HOLDER ASS'Y | 12210-158-000 | 凸輪軸固定座總成 | 1 |
| 3-12-1 | CAMSHAFT HOLDER | 12211-158-000 | 凸輪軸固定座 | 1 |
| 3-12-2 | PLATE COMP STOPPER | 14456-119-000 | 止動板 | 1 |
| 3-12-3 | ARM VALVE ROCKER | 14431-119-000 | 門閥搖臂 | 2 |
| 3-12-4 | SHAFT COMP IN ROCKER ARM | 14452-158-000 | 進氣閥搖臂軸 | 1 |
| 3-12-5 | SHAFT EX ROCKER ARM | 14453-158-000 | 排氣閥搖臂軸 | 1 |
| 3-13 | COPPER PLAIN WASHER | 94101-0818023-U | 銅平面墊圈 | 4 |
| 3-14 | HEX FLANGE NUT | 94050-08000-C | 六角緣面螺帽 | 4 |
| 3-15 | CAMSHAFT COMP | 14400-122-000 | 凸輪軸 | 1 |
| 3-16 | SCREW TAPPEL ADJUSTING | 90012-119-000 | 挺桿調整螺絲 | 2 |
| 3-17 | TAPPET ADJUSTING | 90206-119-000 | 調整螺絲固定螺帽 | 2 |

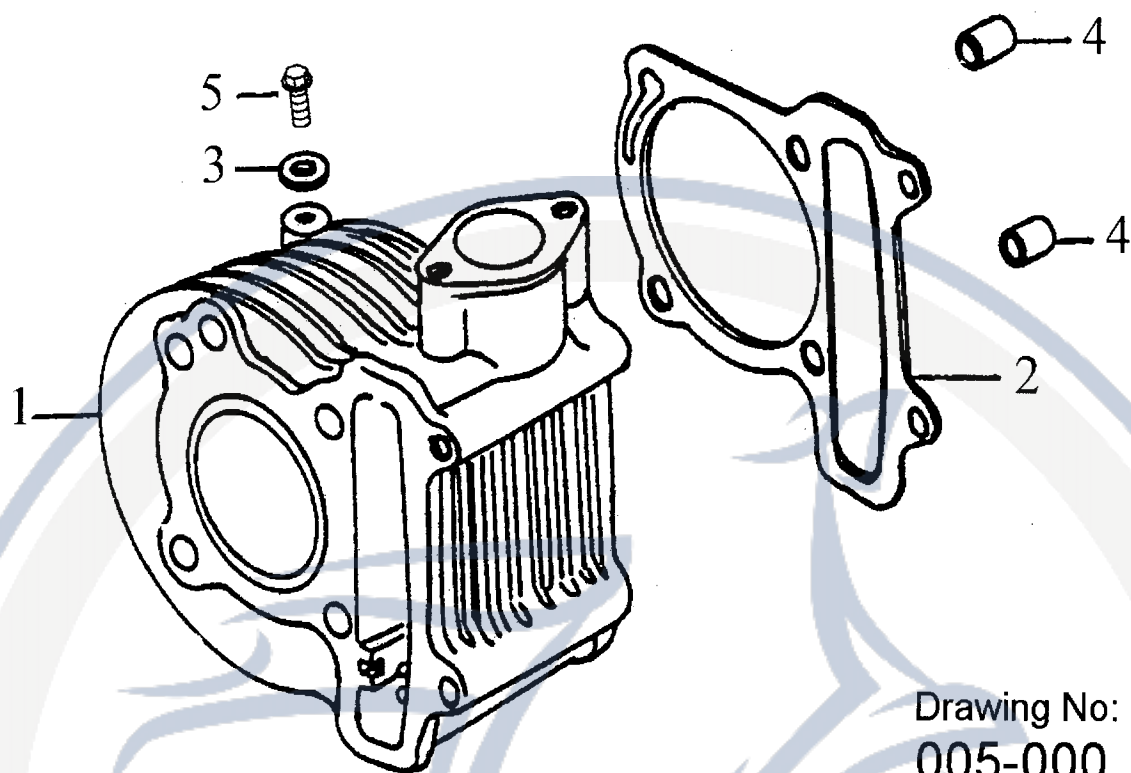
D-4 CAM CHAIN,TENSIONER 內鏈條,拉力桿



Drawing No:
004-000

| SALES MARK | P/N | DESCRIPTION | PART NO. | CUSTOMER NO. | CHINESE | Q'TY |
|------------|-----|---------------------------|------------------|--------------|---------|------|
| 販賣記號 | 件號 | 英文名稱 | 部品番號 | 客戶番號 | 中文名稱 | 用量 |
| | 4-1 | CHAIN CAM | 14401-119-000 | | 凸輪軸內鏈條 | 1 |
| | 4-2 | TENSIONER CAM CHAIN | 14550-119-000 | | 鏈條拉力桿 | 1 |
| | 4-3 | LIFTER TENSIONER LIFTER | 14521-119-000 | | 鏈條調整器 | 1 |
| | 4-4 | GASKET TENSIONER LIFTER | 14523-119-000 | | 鏈條調整墊片 | 1 |
| | 4-5 | PIVOT CAM CHAIN TENSIONER | 14535-119-000 | | 拉力桿螺絲 | 1 |
| | 4-6 | GUIDE COMP CAM CHAIN | 14500-119-000 | | 鏈條導件 | 1 |
| | 4-7 | HEX FLANGE BOLT | 96000-06022-814C | | 六角緣面螺栓 | 2 |
| | 4-8 | SCREW,PAN | 93000-06006-K | | 十字圓錐頭螺絲 | 1 |
| | 4-9 | OIL-RING | 91309-119-000 | | 油環 | 1 |

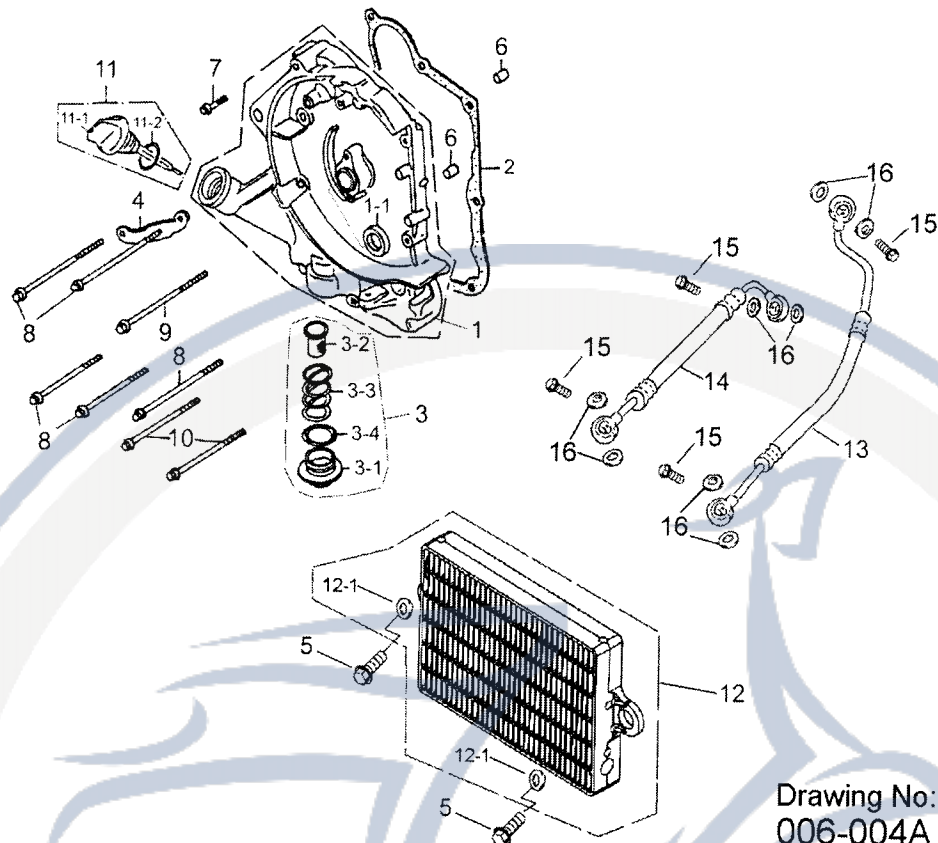
D-5 CYLINDER 汽缸



Drawing No:
005-000

| SALES MARK | P/N | DESCRIPTION | PART NO. | CUSTOMER NO. | CHINESE | Q'TY |
|------------|-----|---------------------|-----------------|--------------|---------|------|
| 販賣記號 | 件號 | 英文名稱 | 部品番號 | 客戶番號 | 中文名稱 | 用量 |
| | 5-1 | CYLINDER | 12101-158-001 | | 汽缸 | 1 |
| | 5-2 | CYLINDER GASKET | 12191-158-000 | | 汽缸墊片 | 1 |
| | 5-3 | COPPER PLAIN WASHER | 94101-0612010-U | | 銅平面墊圈 | 1 |
| | 5-4 | DOWEL PIN | 94301-10140 | | 定位銷 | 2 |
| | 5-5 | HEX FLANGE BOLT | 96000-06012-10C | | 六角緣面螺栓 | 1 |

D-6 RIGHT CRANKCASE COVER 右曲軸箱蓋

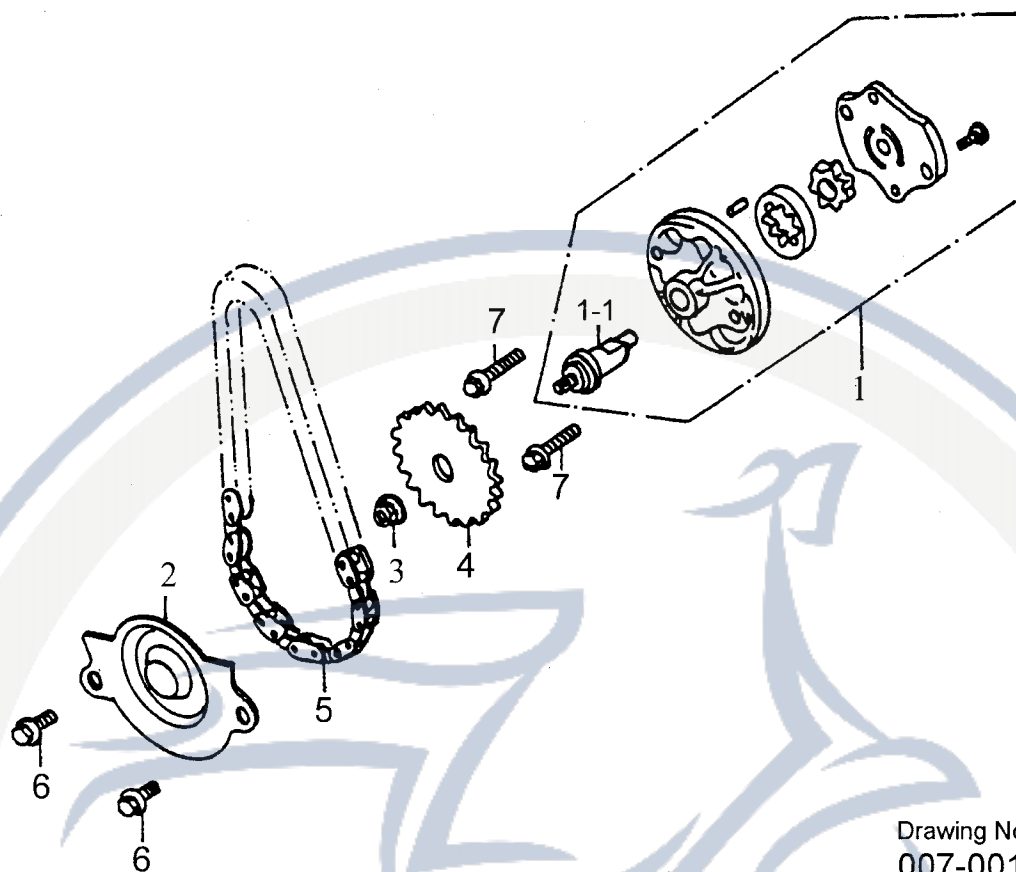


| SALES MARK 販賣記號 | P/N 件號 | DESCRIPTION 英文名稱 | PART NO. 部品番號 | CUSTOMER NO. 客戶番號 | CHINESE 中文名稱 | Q'TY 用量 |
|--------------------|-----------|---------------------------------|------------------|----------------------|-----------------|------------|
| | 6-1 | RIGHT CRANKCASE OVER | 11330-156-002 | | 右曲軸箱蓋 | 1 |
| | 6-1-1 | OIL SEAL | 96501-19305 | | 油封 | 1 |
| | 6-2 | GASKET R. CRANKCASE COVER | 11393-156-000 | | 右曲軸箱蓋墊片 | 1 |
| | 6-3 | CAP TAPPET ADJUSTING HOLE ASS'Y | 12361-119-000 | | 濾油網螺帽蓋總成 | 1 |
| | 6-3-1 | CAP TAPPET | 12360-119-000 | | 螺帽蓋 | 1 |
| | 6-3-2 | SCREEN OIL FILTER | 15421-119-000 | | 濾油網 | 1 |
| | 6-3-3 | SPRING OIL FILTER SPRING | 15426-119-000 | | 濾油網彈簧 | 1 |
| | 6-3-4 | OIL RING | 91330-119-000 | | 油環 | 1 |
| | 6-4 | CLAMPER A.C.GENERATOR CORD | 32961-119-000 | | A.C.G線夾 | 1 |
| | 6-5 | HEX BOLT WITH WASHER | 92000-06025-K | | 六角螺栓附墊圈 | 2 |
| | 6-6 | DOWEL PIN | 94301-08140 | | 定位銷 | 2 |
| | 6-7 | HEX FLANGE BOLT | 96000-06040-8C | | 六角緣面螺栓 | 1 |
| | 6-8 | HEX FLANGE BOLT | 96000-06095-8C | | 六角緣面螺栓 | 5 |
| | 6-9 | HEX FLANGE BOLT | 96000-06100-8C | | 六角緣面螺栓 | 1 |

| | | | | |
|--------|-----------------------|-----------------|--------|---|
| 6-10 | HEX FLANGE BOLT | 96000-06110-8C | 六角緣面螺栓 | 2 |
| 6-11 | GAUGE ASS'Y OIL LEVEL | 1565A-119-000 | 機油尺組 | 1 |
| 6-11-1 | GAUGE OIL LEVEL | 15650-119-000 | 機油尺 | 1 |
| 6-11-2 | OIL RING | 91318-119-000 | 油環 | 1 |
| 6-12 | RADIATOR | 15215-156-000 | 散熱器 | 1 |
| 6-12-1 | RUBBER WASHER | 15235-156-000 | 橡膠墊圈 | 2 |
| 6-13 | LEFT HOSE OUTLET | 15230-158-001 | 左散熱油管 | 1 |
| 6-14 | RIGHT HOSE INLET | 15220-158-001 | 右散熱油管 | 1 |
| 6-15 | OIL TUBE FIXED BOLT | 45456-156-000-G | 油管固定螺栓 | 4 |
| 6-16 | PLAIN WASHER | 94101-1221320-L | 平整圈 | 8 |

Motorroller.de
- seit 1993 -

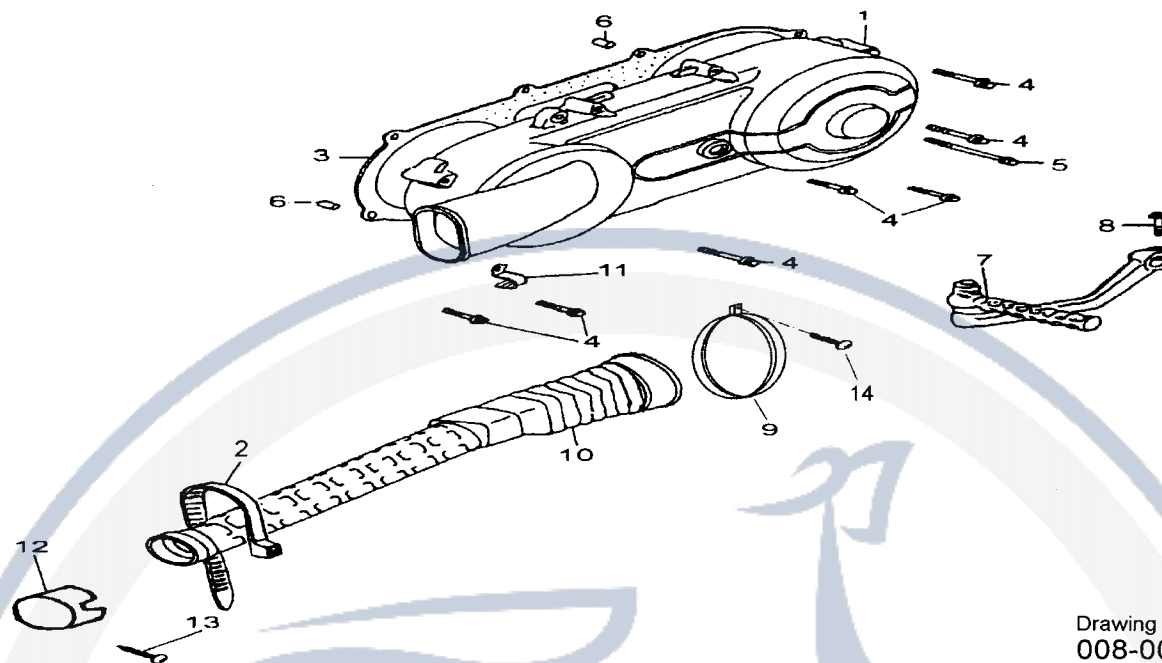
D-7 OIL PUMP 機油泵



Drawing No:
007-001

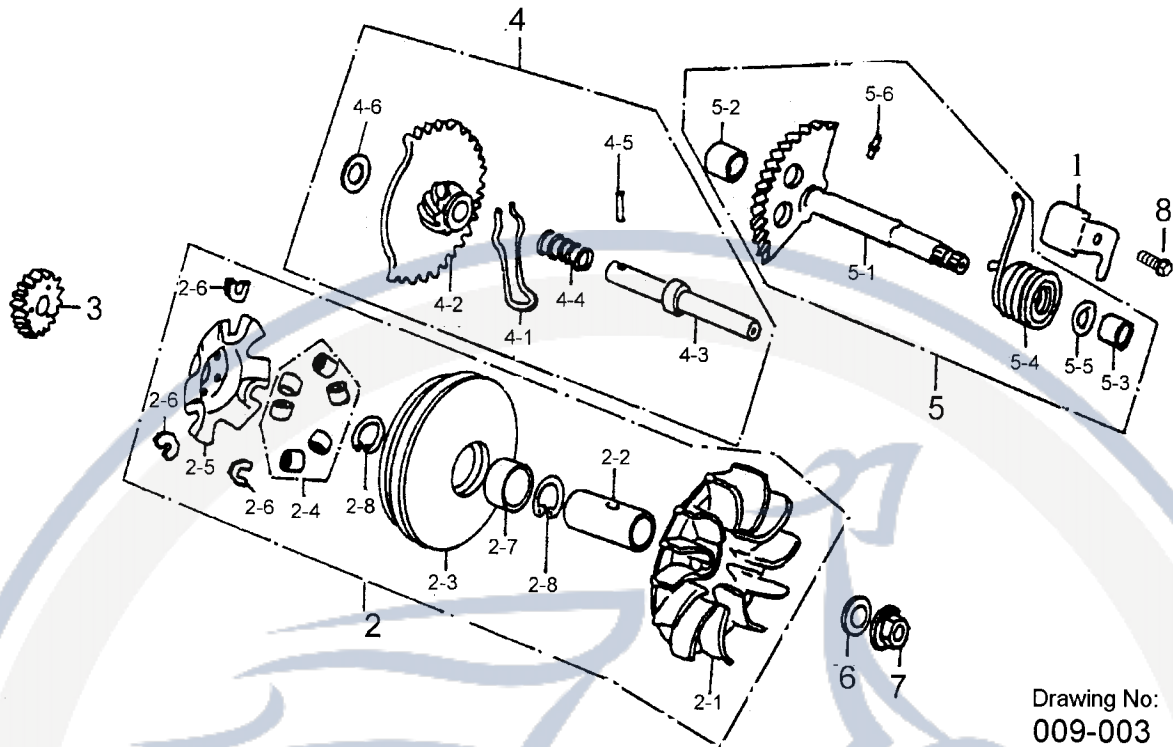
| SALES MARK 販賣記號 | P/N 件號 | DESCRIPTION 英文名稱 | PART NO. 部品番號 | CUSTOMER NO. 客戶番號 | CHINESE 中文名稱 | Q'TY 用量 |
|--------------------|-----------|------------------------|------------------|----------------------|-----------------|------------|
| | 7-1 | OIL PUMP | 15100-158-000 | | 機油泵 | 1 |
| | 7-1-1 | OIL PUMP PROIMARY AXLE | 15131-158-000 | | 油泵主心軸 | 1 |
| | 7-2 | SEPARATOR A OIL | 15711-119-000 | | 機油分隔板 | 1 |
| | 7-3 | HEX FLANGE NUT | 94050-06000-C | | 六角緣面螺帽 | 1 |
| | 7-4 | OIL PUMP DRIVE GEAR | 15150-119-000 | | 油泵驅動齒輪 | 1 |
| | 7-5 | CHAIN OIL PUMP | 15141-119-000 | | 機油泵驅動鏈條 | 1 |
| | 7-6 | HEX FLANGE BOLT | 96000-06012-8C | | 六角緣面螺栓 | 2 |
| | 7-7 | PAN SOCKET BOLT | 93902-06030-B | | 十字埋頭螺栓 | 2 |

D-8 LEFT CRANKCASE COVER 左曲軸箱蓋

Drawing No:
008-004

| SALES MARK | P/N | DESCRIPTION | PART NO. | CUSTOMER NO. | CHINESE | Q'TY |
|------------|------|-------------------------|----------------|--------------|-----------|------|
| 販賣記號 | 件號 | 英文名稱 | 部品番號 | 客戶番號 | 中文名稱 | 用量 |
| | 8-1 | COVER L | 11341-156-001 | | 左曲軸箱蓋 | 1 |
| | 8-2 | STRAP | 90769-111-000 | | 束帶 | 1 |
| | 8-3 | GASKET L COVER | 11359-119-000 | | 左曲軸箱蓋墊片 | 1 |
| | 8-4 | HEX FLANGE BOLT | 96000-06040-8C | | 六角緣面螺栓 | 7 |
| | 8-5 | HEX FLANGE BOLT | 96000-06100-8C | | 六角緣面螺栓 | 1 |
| | 8-6 | DOWEL PIN | 94301-08140 | | 定位銷 | 2 |
| | 8-7 | ARM ASS'Y KICK STARTER | 28300-156-000 | | 起動桿組 | 1 |
| | 8-8 | HEX FLANGE BOLT | 96000-06025-K | | 六角緣面螺栓 | 1 |
| | 8-9 | STRAP | 90669-119-001 | | 固定束帶 | 1 |
| | 8-10 | DUCT L. CRANKCASE COVER | 11345-119-000 | | 左曲軸箱蓋冷卻導管 | 1 |
| | 8-11 | BREATHER HOSE CLIP | 11351-119-000 | | 通氣管夾 | 1 |
| | 8-12 | DUST PROOF RUBBER | 11349-156-000 | | 冷卻導管防塵蓋 | 1 |
| | 8-13 | TAPPING SCREW | 93903-04016-K | | 自攻螺絲 | 1 |
| | 8-14 | PAN PHILLIPS BOLT | 93500-04025-K | | 十字圓頭螺栓 | 1 |

D-9 DRIVE FACE 驅動盤



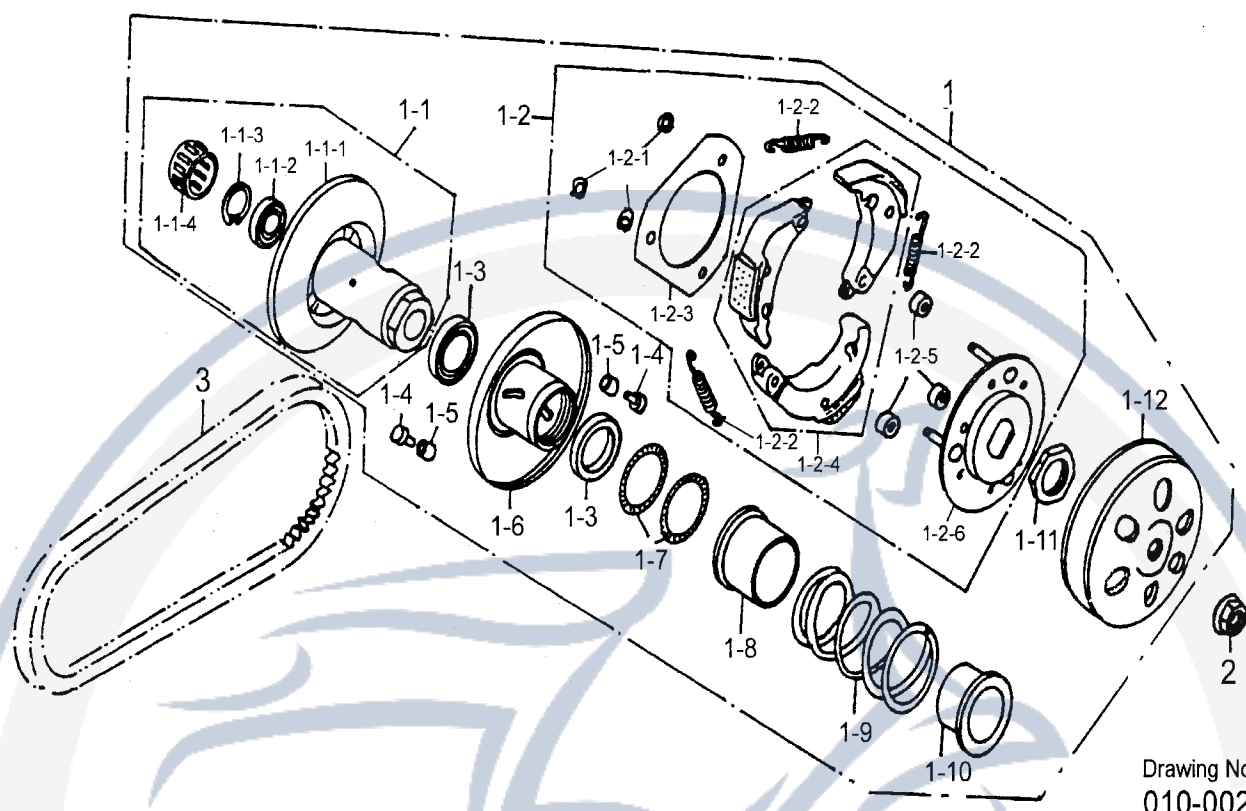
Drawing No:
009-003

| SALES MARK | P/N | DESCRIPTION | PART NO. | CUSTOMER NO. | CHINESE | Q'TY |
|------------|-------|----------------------------|---------------|--------------|---------|------|
| 販賣記號 | 件號 | 英文名稱 | 部品番號 | 客戶番號 | 中文名稱 | 用量 |
| | 9-1 | PLATE KICK RETURN STOPPER | 11207-119-000 | | 起動板制止板 | 1 |
| | 9-2 | FACE ASS'Y MOVABLE DRIVE | 22103-160-000 | | 驅動皮帶輪組 | 1 |
| | 9-2-1 | FACE DRIVE | 22102-156-000 | | 驅動皮帶扇葉盤 | 1 |
| | 9-2-2 | BOSS DRIVE FACE | 96401-172451 | | 襯套 | 1 |
| | 9-2-3 | PRIMARY SLIDING SLOT WHEEL | 22110-156-000 | | 主滑動槽輪 | 1 |
| | 9-2-4 | ROLLER COMP WEIGHT | 22121-158-000 | | 重垂滾子 | 6 |
| | 9-2-5 | PLATE RAMP | 22131-158-000 | | 斜板 | 1 |
| | 9-2-6 | SIDE PIECE | 22132-156-000 | | 滑動片 | 3 |
| | 9-2-7 | BUSH | 96401-242830 | | 襯套 | 1 |
| | 9-2-8 | INTERNAL CIR CLIP | 94512-2800R | | 內環夾 | 2 |
| | 9-3 | GEAR KICK DRIVE | 28211-119-000 | | 起動從動齒輪 | 1 |

| | | | | | |
|-------|------------------------------|-----------------|--|---------|---|
| 9-4 | STARTER IDLE GEAR ASS'Y | 28231-119-000 | | 起動惰齒輪總成 | 1 |
| 9-4-1 | SPRING STARTER GEAR FRICTION | 28223-119-000 | | 起動磨擦彈簧 | 1 |
| 9-4-2 | GEAR COMP STARTER IDLE | 28230-119-000 | | 起動惰齒輪 | 1 |
| 9-4-3 | SHAFT STARTER IDLE | 28241-119-000 | | 起動惰驅動軸 | 1 |
| 9-4-4 | SPRING STARTER IDLE | 28242-119-000 | | 驅動軸彈簧 | 1 |
| 9-4-5 | SPECIAL PIN | 28282-119-000 | | 特殊銷 | 1 |
| 9-4-6 | PLAIN WASHER | 94101-1225023 | | 平面墊圈 | 1 |
| 9-5 | STARTER SPINDLE ASS'Y | 28251-119-000 | | 起動軸總成 | 1 |
| 9-5-1 | STARTER SPINDLE COMP | 28250-119-000 | | 起動軸 | 1 |
| 9-5-2 | BUSH | 96401-121612 | | 襯套 | 1 |
| 9-5-3 | STARTER SPINDLE BUSH | 96401-141816 | | 起動軸襯套 | 1 |
| 9-5-4 | STARTER SPRING | 28281-119-000 | | 起動彈簧 | 1 |
| 9-5-5 | PLAIN WASHER | 94101-1422012-K | | 平面墊圈 | 1 |
| 9-5-6 | ROLLER | 96220-30085 | | 滾子 | 1 |
| 9-6 | PLAIN WASHER | 94101-1225023 | | 平面墊圈 | 1 |
| 9-7 | HEX FLANGE NUT | 94050-12000-C | | 六角緣面螺帽 | 1 |
| 9-8 | HEX FLANGE BOLT | 96000-06012-8C | | 六角緣面螺栓 | 1 |

Motorroller.de
- seit 1993 -

D-10 DRIVEN FACE 傳動盤

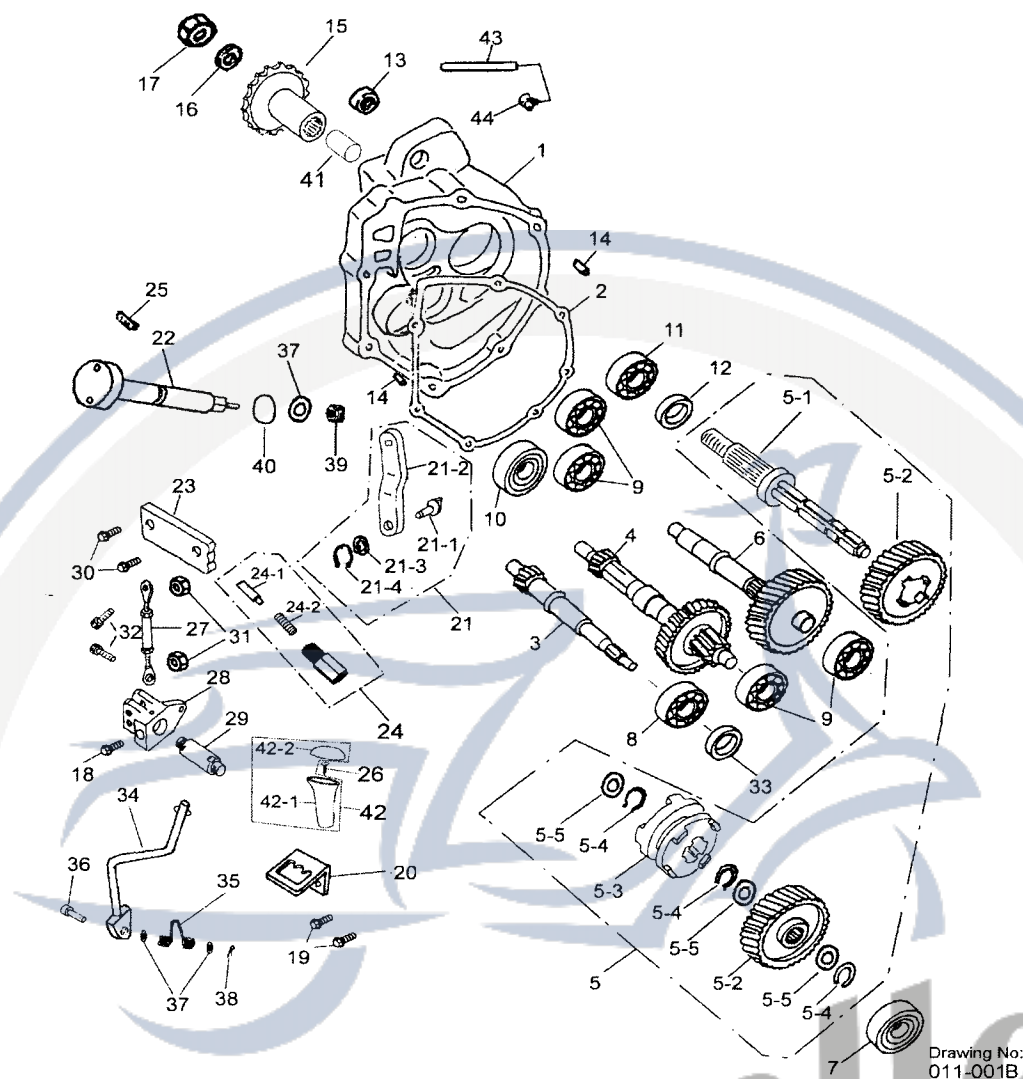
Drawing No:
010-002

| SALES MARK | P/N | DESCRIPTION | PART NO. | CUSTOMER NO. | CHINESE | Q'TY |
|------------|----------|--------------------------|---------------|--------------|-----------|------|
| 販賣記號 | 件號 | 英文名稱 | 部品番號 | 客戶番號 | 中文名稱 | 用量 |
| | 10-1 | DRIVE FACE ASS'Y(B) | 22000-158-000 | | 傳動盤總成 | 1 |
| | 10-1-1 | SECONDARY FIX SLOT WHEEL | 23200-119-000 | | 副固定槽輪整體 | 1 |
| | 10-1-1-1 | FACE ASS'Y DRIVEN | 23210-119-000 | | 從動皮帶盤 | 1 |
| | 10-1-1-2 | RADIAL BALL BEARING | 96100-6902U | | 滾珠軸承 | 1 |
| | 10-1-1-3 | INTERNAL CIR CLIP | 94512-280IR | | 內環夾 | 1 |
| | 10-1-1-4 | NEEDLE BEARING | 96200-202918 | | 滾針軸承 | 1 |
| | 10-1-2 | PLATE ASS'Y DRIVE | 22001-156-000 | | 傳動皮帶輪 | 1 |
| | 10-1-2-1 | EXTERNAL CIR CLIP | 94511-0700E | | 外環夾(E型扣環) | 3 |

| | | | | | |
|----------|------------------------------|---------------|--|---------|---|
| 10-1-2-2 | SPRING CLUTCH | 22401-119-000 | | 離合器彈簧 | 3 |
| 10-1-2-3 | PLATE CLUTCH SIDE | 22351-119-000 | | 離合器側板 | 1 |
| 10-1-2-4 | CLUTCH WEIGHT SET | 22535-156-000 | | 離合器片組 | 3 |
| 10-1-2-5 | RUBBER CLUTCH DAMPER | 22804-119-000 | | 離合器防震橡膠 | 3 |
| 10-1-2-6 | PLATE COMP DRIVE | 22350-119-000 | | 驅動板 | 1 |
| 10-1-3 | OIL SEAL | 96500-34414 | | 油封 | 2 |
| 10-1-4 | GUIDE PIN | 23225-119-000 | | 導輪銷 | 3 |
| 10-1-5 | GUIDE | 23226-119-000 | | 導輪 | 3 |
| 10-1-6 | SECONDARY SLIDING SLOT WHEEL | 23220-119-000 | | 副滑動槽輪整體 | 1 |
| 10-1-7 | OIL RING | 91336-119-000 | | 油環 | 2 |
| 10-1-8 | SECONDARY SPRING SEAT | 23237-119-000 | | 軸環油封 | 1 |
| 10-1-9 | COMPRESSION SPRING | 23233-158-000 | | 傳動盤彈簧 | 1 |
| 10-1-10 | COLLER SPRING | 23238-119-000 | | 壓力彈簧上蓋 | 1 |
| 10-1-11 | NUT , SPECIAL | 90202-119-000 | | 特殊螺帽 | 1 |
| 10-1-12 | CLUTCH COVER COMP | 22100-119-000 | | 離合器外套 | 1 |
| 10-2 | HEX FLANGE NUT | 94050-12000-C | | 六角緣面螺帽 | 1 |
| 10-3 | BELT DRIVE | 23100-122-000 | | 驅動皮帶 | 1 |

Motorroller.de
- seit 1993 -

D-11 TRANSMISSION 傳動系



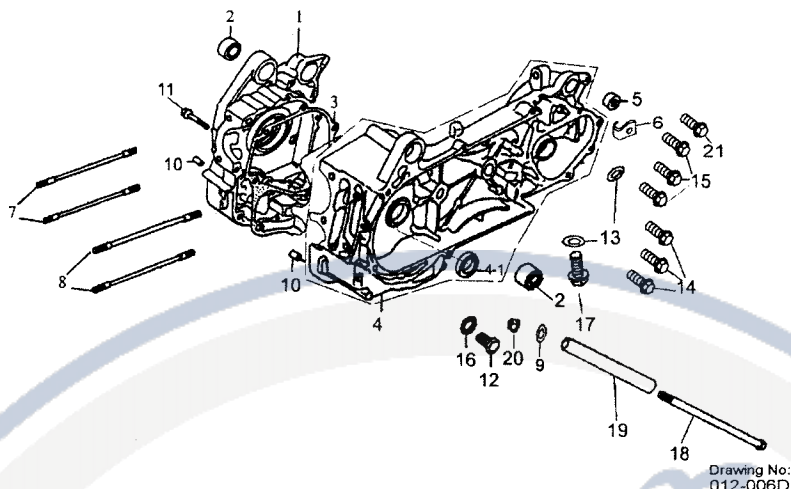
| SALES MARK | P/N | DESCRIPTION | PART NO. | CUSTOMER NO. | CHINESE | Q'TY |
|------------|--------|----------------------|---------------|--------------|---------|------|
| 販賣記號 | 件號 | 英文名稱 | 部品番號 | 客戶番號 | 中文名稱 | 用量 |
| | 11-1 | MISSION COVER | 21301-158-001 | | 變速箱蓋 | 1 |
| | 11-2 | MISSION COVER GASKET | 21395-156-000 | | 變速箱蓋墊片 | 1 |
| | 11-3 | SHAFT , DRIVE | 23411-119-000 | | 驅動軸 | 1 |
| | 11-4 | MAIN AXLE COMP | 23420-156-000 | | 惰輪軸齒輪組 | 1 |
| | 11-5 | SHAFT , FINAL ASS'Y | 23440-156-001 | | 後輪軸組合 | 1 |
| | 11-5-1 | SHAFT , FINAL | 23431-156-001 | | 後輪輸出軸 | 1 |
| | 11-5-2 | GEAR , TRANMISSION | 23434-156-000 | | 傳動齒輪 | 2 |
| | 11-5-3 | CLUTCH | 28430-156-000 | | 離合器 | 1 |
| | 11-5-4 | C - CIRCLIP | 23436-156-000 | | C型環 | 3 |
| | 11-5-5 | SPECIAL WASHER | 23435-156-000 | | 內栓齒墊片 | 3 |

| | | | | | |
|---------|-------------------------------------|---------------------|--|----------|---|
| 11-6 | COUNTER SHAFT ASS'Y | 23433-156-000 | | 中間軸齒輪組 | 1 |
| 11-7 | BEARING | 96100-62030 | | 滾珠軸承 | 1 |
| 11-8 | BEARING | 96100-62040 | | 滾珠軸承 | 1 |
| 11-9 | BEARING | 96100-62020 | | 滾珠軸承 | 4 |
| 11-10 | BEARING | 96100-TMB301 | | 滾珠軸承 | 1 |
| 11-11 | BEARING | 96100-6004U | | 滾珠軸承 | 1 |
| 11-12 | OIL SEAL | 96500-27427 | | 油封 | 1 |
| 11-13 | RUBBER BUSH | 96400-082223 | | 橡膠襯套 | 1 |
| 11-14 | DOWEL PIN | 94301-08140 | | 定位銷 | 2 |
| 11-15 | DRIVE SPROCKET | 23801-159-000 | | 驅動鏈輪 | 1 |
| 11-16 | PLAIN WASHER | 94101-1629030-C | | 平墊圈 | 1 |
| 11-17 | NYLON INSERT LOCK NUT | 90350-16000-C | | 止鬆螺帽 | 1 |
| 11-18 | HEX FLANGE BOLT | 96000-06025-K | | 六角緣面螺栓 | 1 |
| 11-19 | HEX FLANGE BOLT | 96000-06012-K | | 六角緣面螺栓 | 2 |
| 11-20 | FIX CATCH SUPPORT | 21323-156-002 | | 檔位指示器 | 1 |
| 11-21 | TRANSMISSION FORK ASS,Y | 21310-156-000 | | 撥叉組 | 1 |
| 11-21-1 | TRANSMISSION FORK | 21311-156-000 | | 撥叉 | 1 |
| 11-21-2 | TRANSMISSION SHAFT | 21312-156-000 | | 撥桿 | 1 |
| 11-21-3 | SPECLAL WASHER | 23437-156-000 | | 特殊墊圈 | 1 |
| 11-21-4 | C - CINCLIP | 23438-156-000 | | C型環 | 1 |
| 11-22 | TRANSMISSION LINK | 21313-156-000 | | 撥桿連接桿 | 1 |
| 11-23 | TRANSMISSION POSITION FIX PLATE | 21314-156-001 | | 檔位固定板 | 1 |
| 11-24 | TRANSMISSION POSITION FIX BUTTON | 21315-156-000 | | 檔位固定鈕 | 1 |
| 11-24-1 | TRANSMISSION FIX PIN | 21324-156-000 | | 檔位固定銷 | 1 |
| 11-24-2 | TRANSMISSION FIX SPRING | 21325-156-000 | | 檔位固定彈簧 | 1 |
| 11-25 | HEX SOCKET FIX BOLT | 91000-05008-K | | 六角承窩固定螺栓 | 1 |
| 11-26 | HEX FLANGE BOLT | 96000-06025-K | | 六角緣面螺栓 | 1 |
| 11-27 | TRANSMISSION FORK LINK | 21316-156-000 | | 撥叉連接桿 | 1 |
| 11-28 | TRANSMISSION SET | 21317-156-001 | | 排檔座 | 1 |
| 11-29 | TRANSMISSION SET FIX LINK ASS.Y | 21318-156-001 | | 排檔座固定桿組 | 1 |
| 11-30 | HEX FLANGE BOLT | 96000-06012- 10C | | 六角緣面螺栓 | 2 |
| 11-31 | NYLON INSERT LOCK NUT | 90350-06000-K | | 止鬆螺帽 | 2 |

| | | | | |
|---------|------------------------------|-----------------|--------|---|
| 11-32 | HEX SOCKET BOLT | 91000-06025-K | 六角承窩螺栓 | 2 |
| 11-33 | OIL SEAL | 96500-20326 | 油封 | 1 |
| 11-34 | TRANSMISSION LEVER | 21319-156-004 | 排檔桿 | 1 |
| 11-35 | TRANSMISSION LEVER SPRING | 21320-156-001 | 排檔桿彈簧 | 1 |
| 11-36 | TRANSMISSION LEVER FIX PIN | 21321-156-000 | 檔桿固定銷 | 1 |
| 11-37 | PLAIN WASHER | 94101-0816015-C | 平墊圈 | 3 |
| 11-38 | COTTER PIN | 94201-24190 | 開口銷 | 1 |
| 11-39 | HEX NUT WITH SERRATION | 90350-08000-UK | 止鬆螺帽彈片 | 1 |
| 11-40 | O-RING | 91312-111-000 | O型環 | 1 |
| 11-41 | SPACER TUBE | 42809-156-000 | 間隔管 | 1 |
| 11-42 | TRANSMISSION LEVER ROD ASS'Y | 21326-158-000 | 排檔桿頭組 | 1 |
| 11-42-1 | TRANSMISSION LEVER ROD | 21328-158-000 | 排檔桿頭座 | 1 |
| 11-42-2 | TRANSMISSION LEVER COVER | 21327-158-000 | 排檔桿頭蓋 | 1 |
| 11-43 | TUBE BREATHER | 94408-05007-170 | 通氣管 | 1 |
| 11-44 | BREATHER JOINT | 16610-113-000 | 通氣管接頭 | 1 |

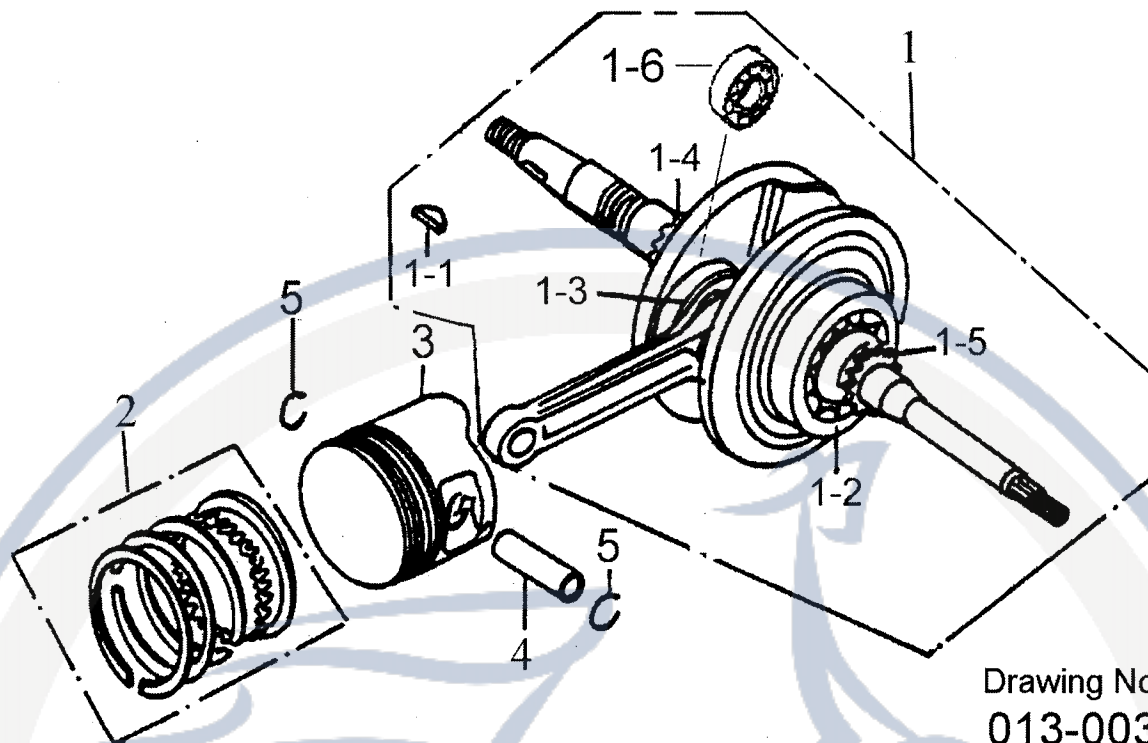
Motorroller.de
- seit 1993 -

D-12 CRANKCASE 曲軸箱



| SALES MARK | P/N | DESCRIPTION | PART NO. | CUSTOMER NO. | CHINESE | Q'TY |
|------------|--------|---------------------------|------------------|--------------|----------|------|
| 販賣記號 | 件號 | 英文名稱 | 部品番號 | 客戶番號 | 中文名稱 | 用量 |
| | 12-1 | RIGHT CRANKCASE | 11101-158-000 | | 右曲軸箱 | 1 |
| | 12-2 | BUSH ENGINE HANGER RUBBER | 96400-102822 | | 引擎吊架橡膠襯套 | 2 |
| | 12-3 | GASKET CRANKCASE | 11191-122-000 | | 曲軸箱墊片 | 1 |
| | 12-4 | LEFT CRANKCASE | 11201-158-003 | | 左曲軸箱 | 1 |
| | 12-4-1 | OIL SEAL | 96501-19305 | | 油封 | 1 |
| | 12-5 | RUBBER BUSHING | 96400-082223 | | 橡膠襯套 | 2 |
| | 12-6 | CARBUBETOR TUBE BRACKET | 11351-111-000 | | 洩油管固定片 | 1 |
| | 12-7 | STUD BOLT | 91001-08181-C | | 雙頭螺栓 | 2 |
| | 12-8 | STUD BOLT | 91001-08187-C | | 雙頭螺栓 | 2 |
| | 12-9 | PLAIN WASHER | 94101-1022020-C | | 平墊圈 | 1 |
| | 12-10 | DOWEL PIN | 94301-08140 | | 定位銷 | 2 |
| | 12-11 | HEX FLANGE BOLT | 96000-06050-C | | 六角緣面螺栓 | 1 |
| | 12-12 | HEX FLANGE BOLT | 96000-12015-14C | | 六角緣面螺栓 | 1 |
| | 12-13 | PLAIN WASHER (ALUMINUM) | 94101-0816020-L | | 平面墊圈(鋁) | 2 |
| | 12-14 | HEX FLANGE BOLT | 96000-06060-8C | | 六角緣面螺栓 | 3 |
| | 12-15 | HEX FLANGE BOLT | 96000-06070-8C | | 六角緣面螺栓 | 3 |
| | 12-16 | PLAIN WASHER | 94101-1221320-L | | 平面墊圈 | 1 |
| | 12-17 | HEX FLANGE BOLT | 96000-08012-10C | | 六角緣面螺栓 | 2 |
| | 12-18 | HEX FLANGE BOLT | 96000-10197-14C | | 六角緣面螺栓 | 1 |
| | 12-19 | ENGING SPACER COLLAR | 11150-156-001 | | 引擎間隔管 | 1 |
| | 12-20 | NYLON INSERT LOCK NUT | 90350-10000-C | | 止鬆螺帽 | 1 |
| | 12-21 | HEX FLANGE BOLT | 96000-06045-08-C | | 六角緣面螺栓 | 1 |

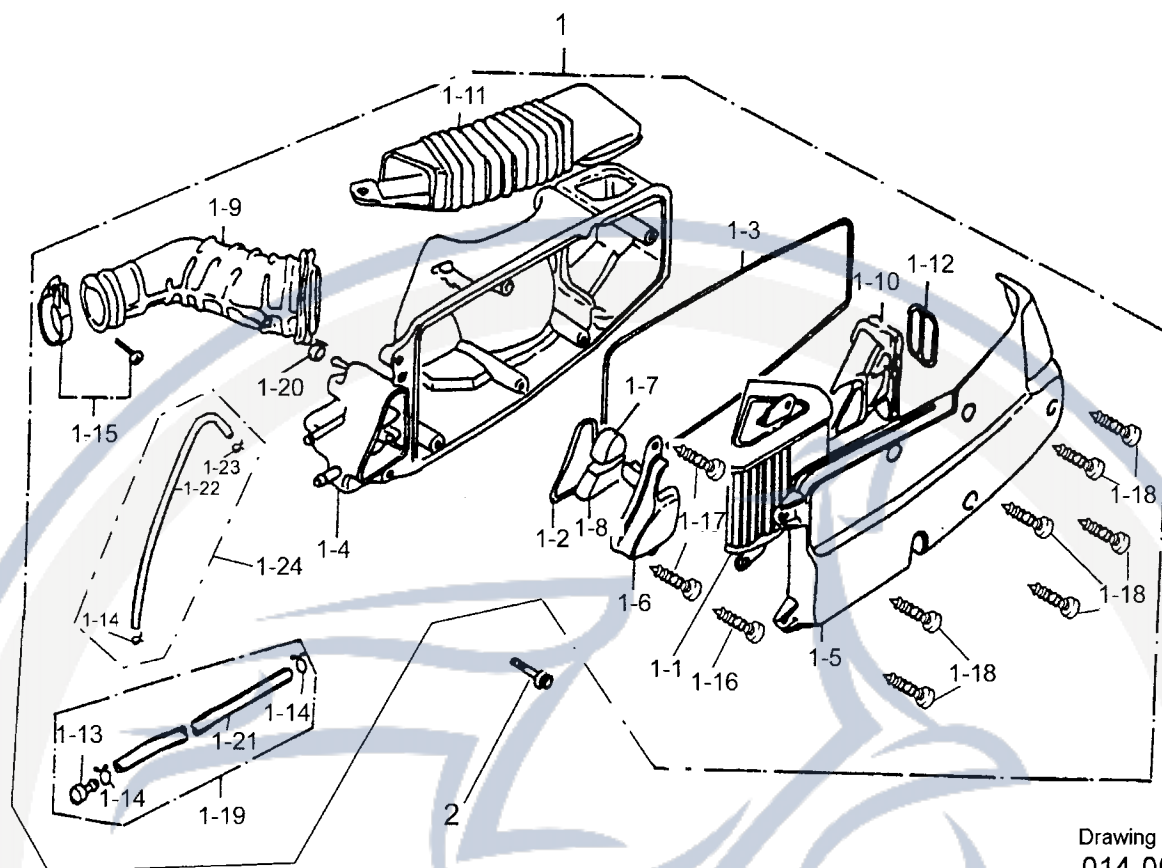
D-13 CRANK SHAFT,PISTON 曲軸、活塞



Drawing No:
013-003

| SALES MARK | P/N | DESCRIPTION | PART NO. | CUSTOMER NO. | CHINESE | Q'TY |
|------------|--------|-----------------------|---------------|--------------|---------|------|
| 販賣記號 | 件號 | 英文名稱 | 部品番號 | 客戶番號 | 中文名稱 | 用量 |
| | 13-1 | CRANKSHAFT ASS'Y | 13000-156-001 | | 曲軸總成 | 1 |
| | 13-1-1 | SEMICYCLE KEY | 90471-119-000 | | 半圓鍵 | 1 |
| | 13-1-2 | BEARING | TMB305V32 | | 軸承 | 1 |
| | 13-1-3 | NEEDLE BEARING | 96200-283313 | | 滾針軸承 | 1 |
| | 13-1-4 | CAM TRANSMISSION GEAR | 14322-119-000 | | 油泵鏈齒輪 | 1 |
| | 13-1-5 | TIMING GEAR | 14311-119-000 | | 時規齒輪 | 1 |
| | 13-1-6 | BEARING | CSSC04A86CS12 | | 軸承 | 1 |
| | 13-2 | PISTON RING SET | 13011-158-000 | | 活塞環組 | 1 |
| | 13-3 | PISTON | 13100-158-000 | | 活塞 | 1 |
| | 13-4 | PISTON PIN | 13111-158-000 | | 活塞銷 | 1 |
| | 13-5 | CLIP PISTON PIN | 13115-119-001 | | 活塞銷夾環 | 2 |

D-14 AIR CLEANER 空氣濾清器

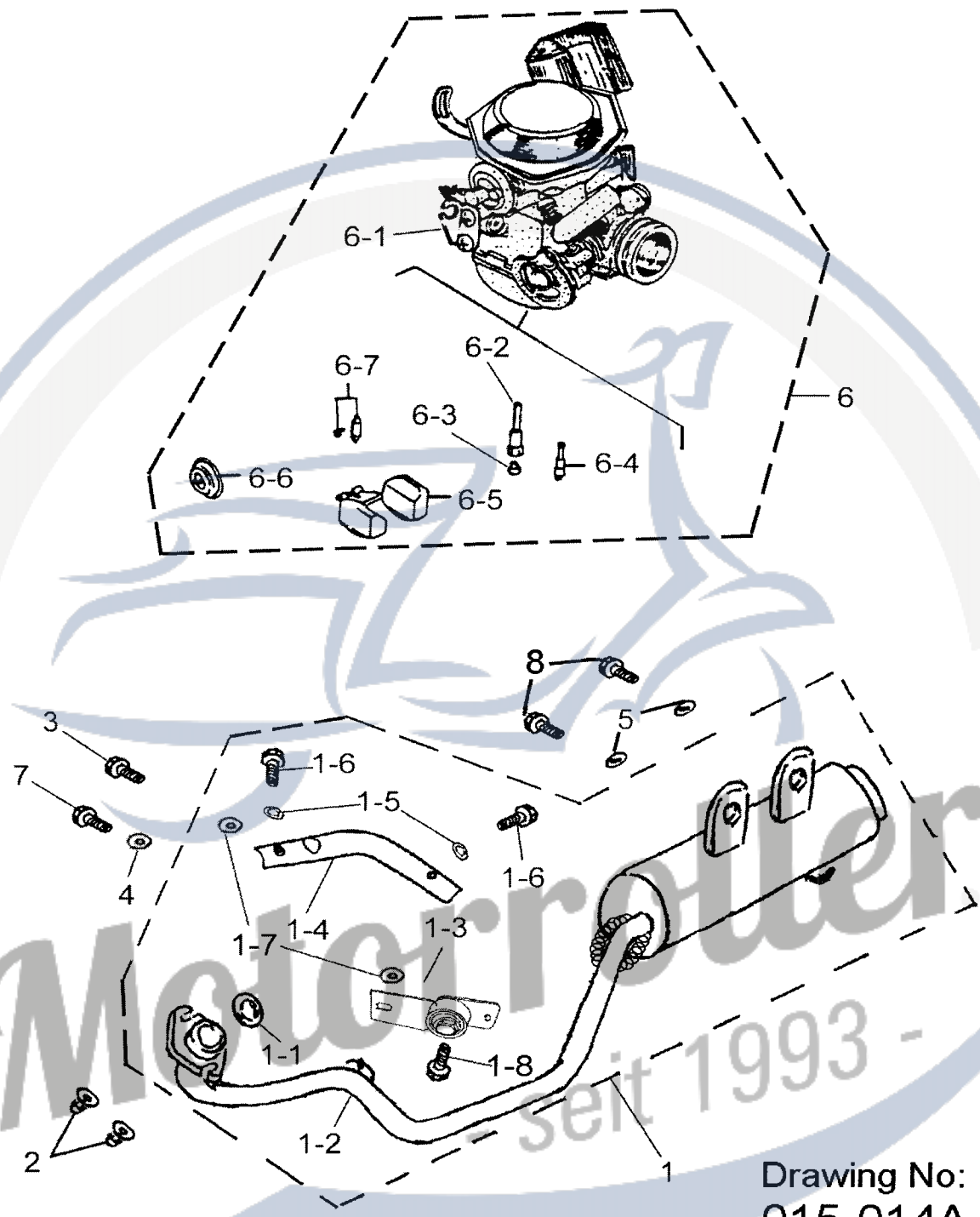
Drawing No:
014-003

| SALES MARK 販賣記號 | P/N 件號 | DESCRIPTION 英文名稱 | PART NO. 部品番號 | CUSTOMER NO. 客戶番號 | CHINESE 中文名稱 | Q'TY 用量 |
|--------------------|-----------|------------------------|------------------|----------------------|-----------------|------------|
| | 14-1 | AIR CLEANER ASS'Y | 17200-156-001 | | 空氣濾清器總成 | 1 |
| | 14-1-1 | AIR CLEANER ELEMENT | 17205-119-000 | | 空氣濾清器過濾 芯 | 1 |
| | 14-1-2 | SEAL OIL CATCH | 17212-119-000 | | 集油室蓋封條 | 1 |
| | 14-1-3 | SEAL OIL CLEANER COVER | 17213-119-000 | | 空氣濾清器蓋封 條 | 1 |
| | 14-1-4 | AIR CLEANER CASE | 17206-119-000 | | 空氣濾清器箱 | 1 |
| | 14-1-5 | CLEANER CASE CAP | 17207-119-000 | | 空氣濾清器箱蓋 | 1 |
| | 14-1-6 | COVER OIL CATCH | 17232-119-000 | | 集油室蓋 | 1 |
| | 14-1-7 | FILTER BREATHER | 17234-119-000 | | 空氣濾清海綿 | 1 |
| | 14-1-8 | FILTER OIL CATCH | 17235-119-000 | | 集油濾清海綿 | 1 |
| | 14-1-9 | AIR CLEANER JOINT | 17253-119-001 | | 空氣濾清器連接 管 | 1 |

| | | | | | |
|---------|---------------------------------------|------------------|--|---------|---|
| 14-1-10 | DUCT AIR CLEANER IN | 17255-119-000 | | 進氣導管 | 1 |
| 14-1-11 | DUCT AIR CLEANER CASE | 17257-119-000 | | 空氣導管 | 1 |
| 14-1-12 | SPRING IN DUCT | 17258-119-000 | | 進氣導管彈簧 | 1 |
| 14-1-13 | PLUG BREATHER TUBE | 17370-119-000 | | 集油管塞 | 1 |
| 14-1-14 | CLIP | 94510-12000 | | 管夾 | 3 |
| 14-1-15 | INTAKE MANIFOLD HOSE CLAMP | 14110-119-000 | | 進氣歧管軟管夾 | 1 |
| 14-1-16 | PAN PHILLIPS BOLT | 93500-05010-K | | 十字圓頭螺栓 | 2 |
| 14-1-17 | TAPPING SCREW TRUSS HEAD PHIL LIPS | 93903-04012-K | | 自攻螺絲 | 2 |
| 14-1-18 | TAPPING SCREW TRUSS HEAD PHIL LIPS | 93903-05020-K | | 自攻螺絲 | 7 |
| 14-1-19 | TUBE ASS'Y DRAIN | 17360-119-000 | | 集油管組 | 1 |
| 14-1-20 | CLAMP TUBE | 94509-09000 | | 夾緊環 | 1 |
| 14-1-21 | TUBE VINYL | 94400-08012 | | 集油管 | 1 |
| 14-1-22 | BREATHER TUBE | 11211-119-000 | | 通氣管 | 1 |
| 14-1-23 | CLIP | 94510-08000 | | 管夾 | 1 |
| 14-1-24 | BREATHER TUBE ASS'Y | 11210-119-000 | | 通氣管組 | 1 |
| 14-2 | HEX FLANGE BOLT | 96000-06032-816C | | 六角緣面螺栓 | 2 |

Motorroller.de
- seit 1993 -

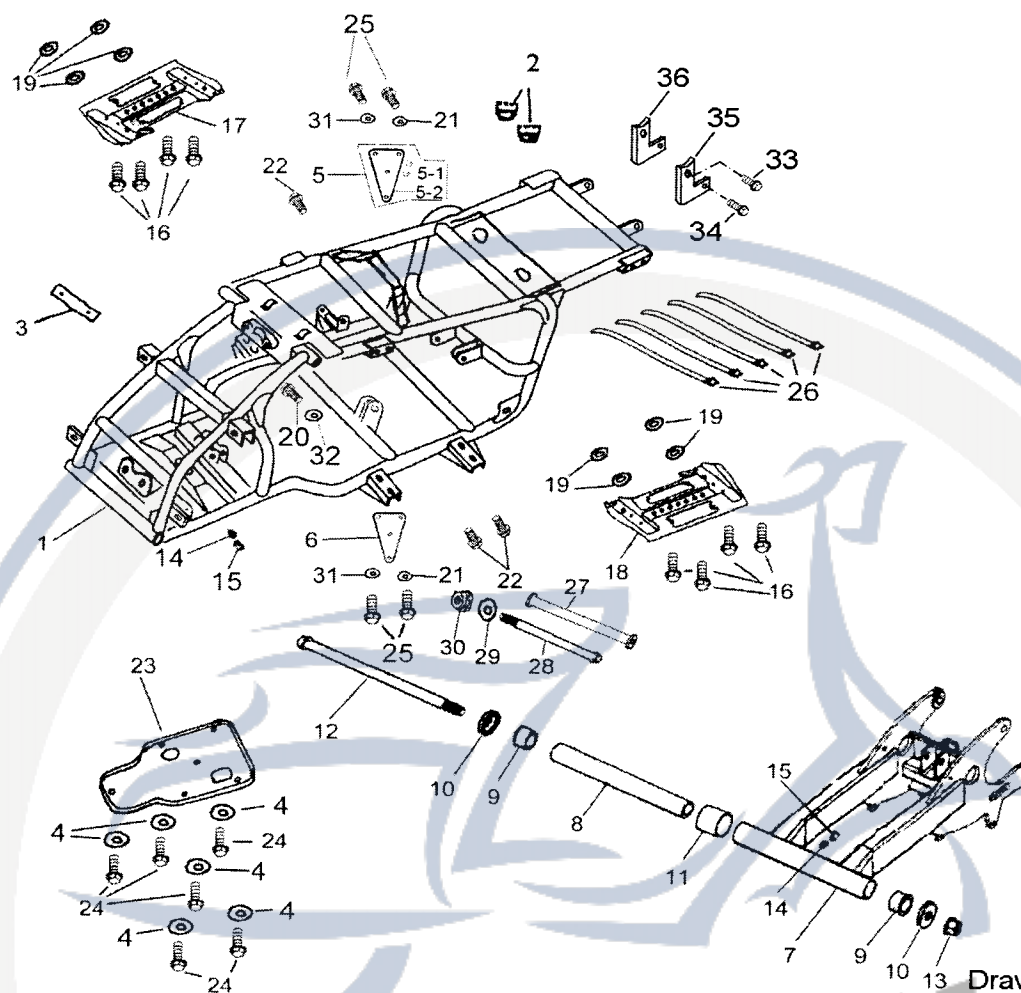
D-15 EXHANST MUFFLER,CARBURETOR 排氣管,化油器



Drawing No:
015-014A

| SALES MARK | P/N | DESCRIPTION | PART NO. | CUSTOMER NO. | CHINESE | Q"TY |
|------------|--------|-------------------------|-----------------|--------------|------------|------|
| 販賣記號 | 件號 | 英文名稱 | 部品番號 | 客戶番號 | 中文名稱 | 用量 |
| | 15-1 | EXHAUST PIPE ASS'Y | 18300-186-000 | | 排氣管總成 | 1 |
| | 15-1-1 | EXHAUST PIPE GASKET | 18291-119-000 | | 排氣管墊片 | 1 |
| | 15-1-2 | EXHAUST PIPE | 18301-186-000 | | 排氣管 | 1 |
| | 15-1-3 | EXHAUST PIPE FIX PLATE | 18317-156-001 | | 排氣管固定板 | 1 |
| | 15-1-4 | EXHAUST PIPE PROTECTOR | 18315-156-001 | | 排氣管護蓋 | 1 |
| | 15-1-5 | GASKET | 94102-0613010 | | 石棉墊片 | 2 |
| | 15-1-6 | HEX FLANGE BOLT | 93500-060010 | | 六角緣面螺栓 | 2 |
| | 15-1-7 | GASKET | 94102-08517020 | | 石棉墊片 | 2 |
| | 15-1-8 | HEX FLANGE BOLT | 96000-08025-K | | 六角緣面螺栓 | 1 |
| | 15-2 | NUT CAP | 90301-08000-C | | 圓頭帽 | 2 |
| | 15-3 | HEX FLANGE BOLT | 96000-08016-K | | 六角緣面螺栓 | 1 |
| | 15-4 | SPRING WASHER | 94111-08000-K | | 彈簧墊圈 | 1 |
| | 15-5 | PLAIN WASHER | 94101-0822020-C | | 平墊圈 | 2 |
| | 15-6 | CARBURETOR ASS'Y | 16100-186-000 | | 化油器組合 | 1 |
| | 15-6-1 | THROTTLE CABLE FIX SEAT | 16120-119-000 | | 加油線固定座 | 1 |
| | 15-6-2 | NEEDLE NOZZLE | 16105-182-000 | | 針噴嘴 | 1 |
| | 15-6-3 | MAIN NOZZLE | 16108-186-000 | | 主噴嘴 | 1 |
| | 15-6-4 | PILOT JET | 16110-182-000 | | 引導噴口 | 1 |
| | 15-6-5 | FLOAT | 16118-182-000 | | 浮筒 | 1 |
| | 15-6-6 | PLUNGER FILM | 16048-182-000 | | 阻風膜片 | 1 |
| | 15-6-7 | NEEDLE VALVE SET | 16117-182-000 | | 針閥總成 | 1 |
| | 15-7 | HEX FLANGE BOLT | 96000-08020-K | | 六角緣面螺栓 | 1 |
| | 15-8 | HEX FLANGE BOLT | 96000-08016-KL | | 六角緣面螺栓(耐落) | 2 |

D-16 FRAME BODY 車架

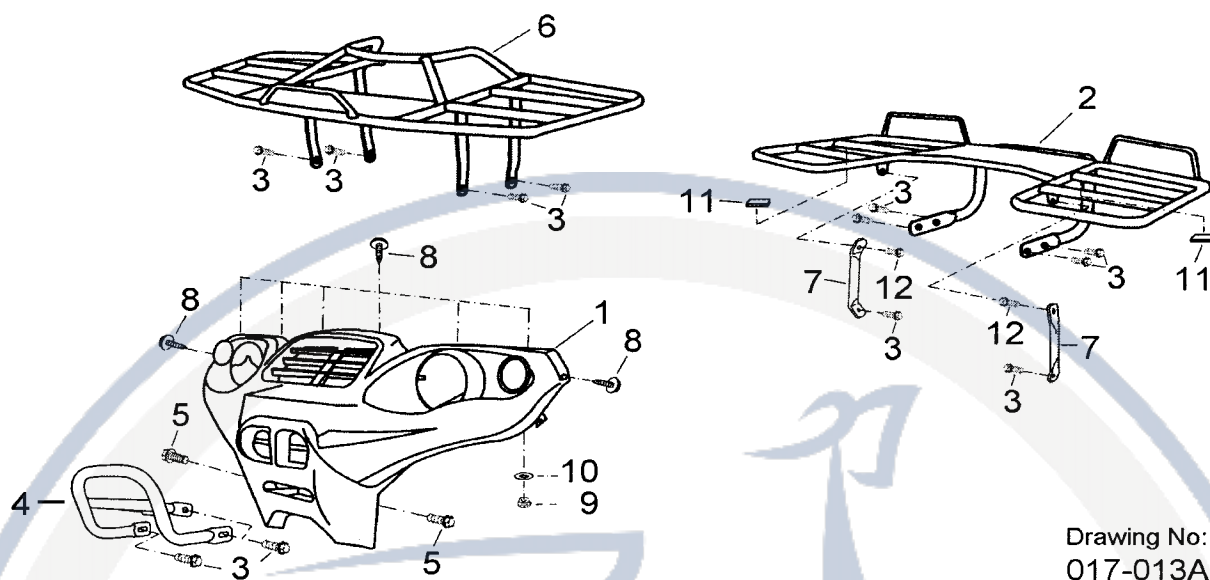


Drawing No:
016-018A

| SALES MARK | P/N | DESCRIPTION | PART NO. | CUSTOMER NO. | CHINESE | Q'TY |
|------------|--------|----------------------------|---------------|--------------|-----------|------|
| 販賣記號 | 件號 | 英文名稱 | 部品番號 | 客戶番號 | 中文名稱 | 用量 |
| | 16-1 | FRAME COMP | 50100-182-A00 | | 車體總成 | 1 |
| | 16-2 | SEAT RUBBER | 77220-131-000 | | 座墊橡膠墊 | 2 |
| | 16-3 | FLANGE NUMBER PLATE | 50130-131-000 | | 車架號碼牌 | 1 |
| | 16-4 | SPRING WASHER | 94111-07500-K | | 彈簧墊圈 | 6 |
| | 16-5 | RIGHT ENGING BRACKET PLATE | 50351-158-002 | | 引擎前右吊板組合 | 1 |
| | 16-5-1 | SPACER TUBE | 50354-158-000 | | 間隔管 | 2 |
| | 16-5-2 | RIGHT ENGING BRACKET PLATE | 50362-158-000 | | 引擎前右吊板 | 1 |
| | 16-6 | LEFT ENGING BRACKET PLATE | 50355-158-002 | | 引擎前左吊板組合 | 1 |
| | 16-7 | SWING ARM SUB ASS'Y | 52410-182-A00 | | 後避震器搖臂 | 1 |
| | 16-8 | SWING ARM SPACER TUBE | 52420-131-000 | | 後避震器搖臂間隔管 | 1 |

| | | | | | |
|-------|-------------------------------|-----------------|--|-----------|---|
| 16-9 | GREASE CONTAIN SEAT | 52421-131-000 | | 潤滑油保持座 | 2 |
| 16-10 | SWING ARM SEAT COVER | 52422-131-000 | | 防塵蓋 | 2 |
| 16-11 | RUBBER SLEEVE | 52423-156-000 | | 橡膠套 | 1 |
| 16-12 | HEX FLANGE BOLT | 96000-14290-C | | 六角緣面螺栓 | 1 |
| 16-13 | INSERT LOCK NUT | 90350-14000-UC | | 止鬆螺帽(彈片) | 1 |
| 16-14 | GREASE VALVE | 51300-131-000 | | 注油閥 | 2 |
| 16-15 | GREASE VALVE RUBBER CAP | 51301-131-000 | | 注油閥橡皮蓋 | 2 |
| 16-16 | HEX FLANGE BOLT | 96000-08012-K | | 六角緣面螺栓 | 8 |
| 16-17 | RIGHT FOOTWELL BOTTOM BOARD | 51105-156-000 | | 右腳踏底板 | 1 |
| 16-18 | LEFT FOOTWELL BOTTOM BOARD | 51120-156-000 | | 左腳踏底板 | 1 |
| 16-19 | FOOT REST GROMMER | 64320-151-000 | | 腳踏板橡膠塞 | 8 |
| 16-20 | HEX SOCKET BOLT | 91000-08040-K | | 六角承窩螺栓 | 1 |
| 16-21 | COPPER WASHER | 94101-0820010-U | | 銅墊圈 | 2 |
| 16-22 | HEX FLANGE BOLT | 96000-08040-K | | 六角緣面螺栓 | 3 |
| 16-23 | PROTECTION FRAME BOTTOM BOARD | 50106-156-002 | | 車底防護板 | 1 |
| 16-24 | PAN PHILLIPS BOLT | 93100-06010-K | | 十字扁圓頭螺栓 | 6 |
| 16-25 | HEX FLANGE BOLT | 96000-08035-K | | 六角緣面螺栓 | 4 |
| 16-26 | STRAP | 90569-131-000 | | 束帶 | 5 |
| 16-27 | ENGINE FRONT BRACKET SPACER | 50310-156-000 | | 引擎前吊板支撐座 | 1 |
| 16-28 | FIXING SCREW FOR SPACER | 96000-10240-14C | | 支撐座固定螺栓 | 1 |
| 16-29 | WASHER | 94101-1022020-C | | 平墊圈 | 1 |
| 16-30 | NYLON INSERT LOCK NUT | 90350-10000-C | | 止鬆螺帽 | 1 |
| 16-31 | SPRING WASHER | 94111-08000-K | | 彈簧墊圈 | 2 |
| 16-32 | PLAIN WASHER | 94101-0818016-K | | 平墊圈 | 1 |
| 16-33 | HEX BOLT WITH SPRING WASHER | 92001-08016-K | | 六角螺栓附彈簧墊圈 | 2 |
| 16-34 | HEX BOLT WITH WASHER | 92000-08016-K | | 六角螺栓附墊圈 | 2 |
| 16-35 | LICENSE PLATE BRACKET(L) | 33706201-000 | | 左牌照板固定片 | 1 |
| 16-36 | LICENSE PLATE BRACKET(R) | | | 右牌照板固定片 | 1 |

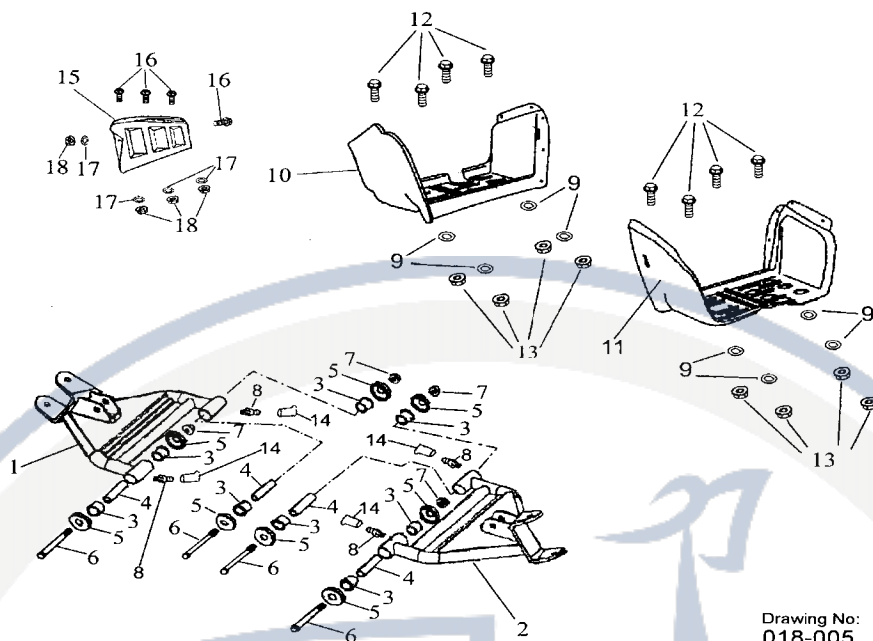
D-17 BUMPER、FRONT AND REAR RACK前、後保險桿,前、後貨架



Drawing No:
017-013A

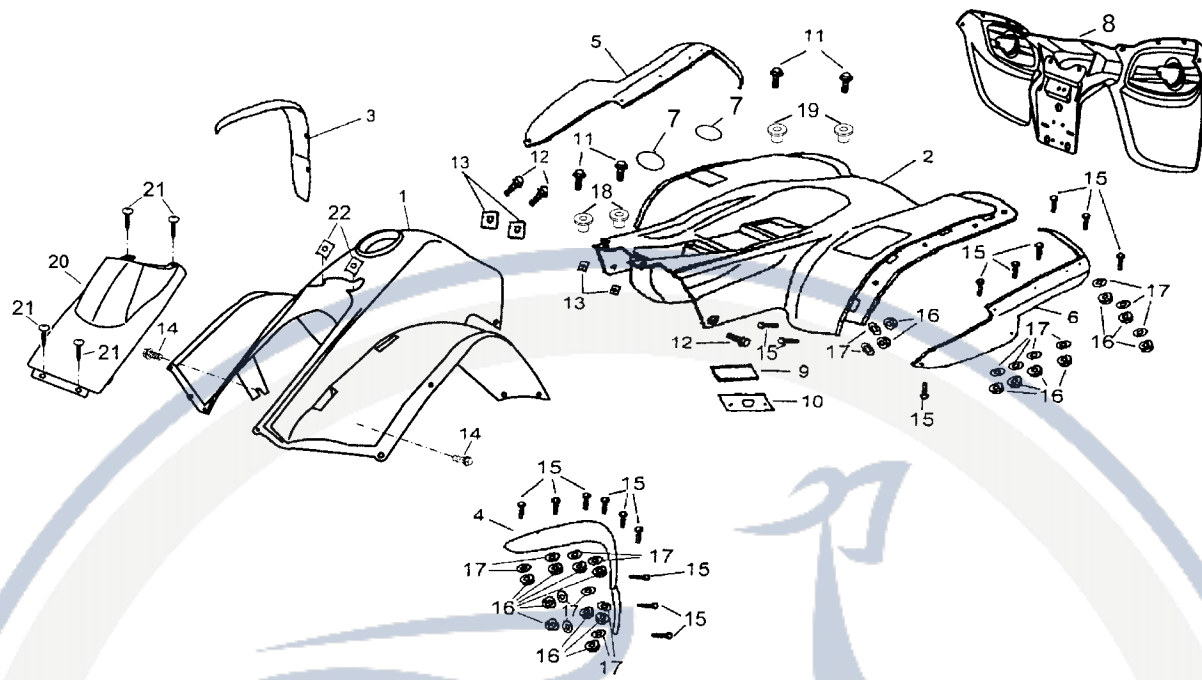
| SALES MARK 販賣記號 | P/N 件號 | DESCRIPTION 英文名稱 | PART NO. 部品番號 | CUSTOMER NO. 客戶番號 | CHINESE 中文名稱 | Q'TY 用量 |
|--------------------|-----------|-----------------------------|------------------|----------------------|-----------------|------------|
| | 17-1 | BUMPER COVER | 50460-182-000 | | 前保險桿護蓋 | 1 |
| | 17-2 | REAR IRON RACK | 81111-182-A00 | | 後貨架鐵架 | 1 |
| | 17-3 | HEX BOLT WITH SPRING WASHER | 92001-08016-K | | 六角螺栓附彈簧墊圈 | 14 |
| | 17-4 | BUMPER | 50455-182-A00 | | 前保險桿小鐵架 | 1 |
| | 17-5 | HEX BOLT WITH FIX WASHER | 92003-06016-K | | 六角螺栓附齒華司 | 2 |
| | 17-6 | FRONT IRON RACK | 50495-182-A00 | | 前貨架鐵架 | 1 |
| | 17-7 | REAR RACK BRACKET | 81121-182-A00 | | 後貨架支架 | 2 |
| | 17-8 | PAN PHILLIPS BOLT | 93100-05016-K | | 十字扁圓頭螺栓 | 8 |
| | 17-9 | NYLON INSERT LOCK NUT | 90350-05000-K | | 止鬆螺帽 | 8 |
| | 17-10 | PLAIN WASHER | 94101-0514010-K | | 平墊圈 | 8 |
| | 17-11 | ANTI-VIBRATION RUBBER | 81113-153-000 | | 防震背膠 | 2 |
| | 17-12 | HEX BOLT WITH SPRING WASHER | 92001-08020-K | | 六角螺栓附彈簧墊圈 | 2 |

D-18 SWING ARM, FOOTREST 前避震臂, 腳踏板

Drawing No:
018-005

| SALES MARK | P/N | DESCRIPTION | PART NO. | CUSTOMER NO. | CHINESE | Q'TY |
|------------|-------|-------------------------|-----------------|--------------|---------|------|
| 販賣記號 | 件號 | 英文名稱 | 部品番號 | 客戶番號 | 中文名稱 | 用量 |
| | 18-1 | RIGHT SUSPENSION ARM | 53030-156-A00 | | 右避震臂 | 1 |
| | 18-2 | SUSPENSION ARM | 53130-156-A00 | | 左避震臂 | 1 |
| | 18-3 | SUSPENSION ARM BUSH | 53135-156-000 | | 避震臂襯套 | 8 |
| | 18-4 | SPACER TUBE | 53140-156-000 | | 避震臂間隔管 | 4 |
| | 18-5 | DUST PROOF RUBBER | 52426-156-000 | | 防塵蓋 | 8 |
| | 18-6 | HEX FLANGE BOLT | 96000-10075-KL | | 六角緣面螺栓 | 4 |
| | 18-7 | HEX FLANGE NUT | 94050-10000-C | | 六角緣面螺帽 | 4 |
| | 18-8 | GREASE VALVE | 51300-131-000 | | 注油閥 | 4 |
| | 18-9 | PLAIN WASHER | 94101-0613010-K | | 平墊圈 | 8 |
| | 18-10 | RIGHT FOOTREST | 64300-156-002 | | 右腳踏板 | 1 |
| | 18-11 | LEFT FOOTREST | 64310-156-001 | | 左腳踏板 | 1 |
| | 18-12 | HEX BOLT WITH WASHER | 92000-06016-K | | 六角螺栓附墊圈 | 8 |
| | 18-13 | NYLON INSERT LOCK NUT | 90350-06000-K | | 止鬆螺帽 | 8 |
| | 18-14 | GREASE VALVE RUBBER CAP | 51301-131-000 | | 注油閥橡皮蓋 | 4 |
| | 18-15 | HEAT SHIELD | 50480-156-000 | | 防燙護板 | 1 |
| | 18-16 | PAN PHILLIPS BOLT | 93100-05016-K | | 十字扁圓頭螺栓 | 4 |
| | 18-17 | PLAIN WASHER | 94101-0514010-K | | 平墊圈 | 4 |
| | 18-18 | NYLON INSERT LOCK NUT | 90350-05000-K | | 止鬆螺帽 | 4 |

D-19 FENDER 擋泥板

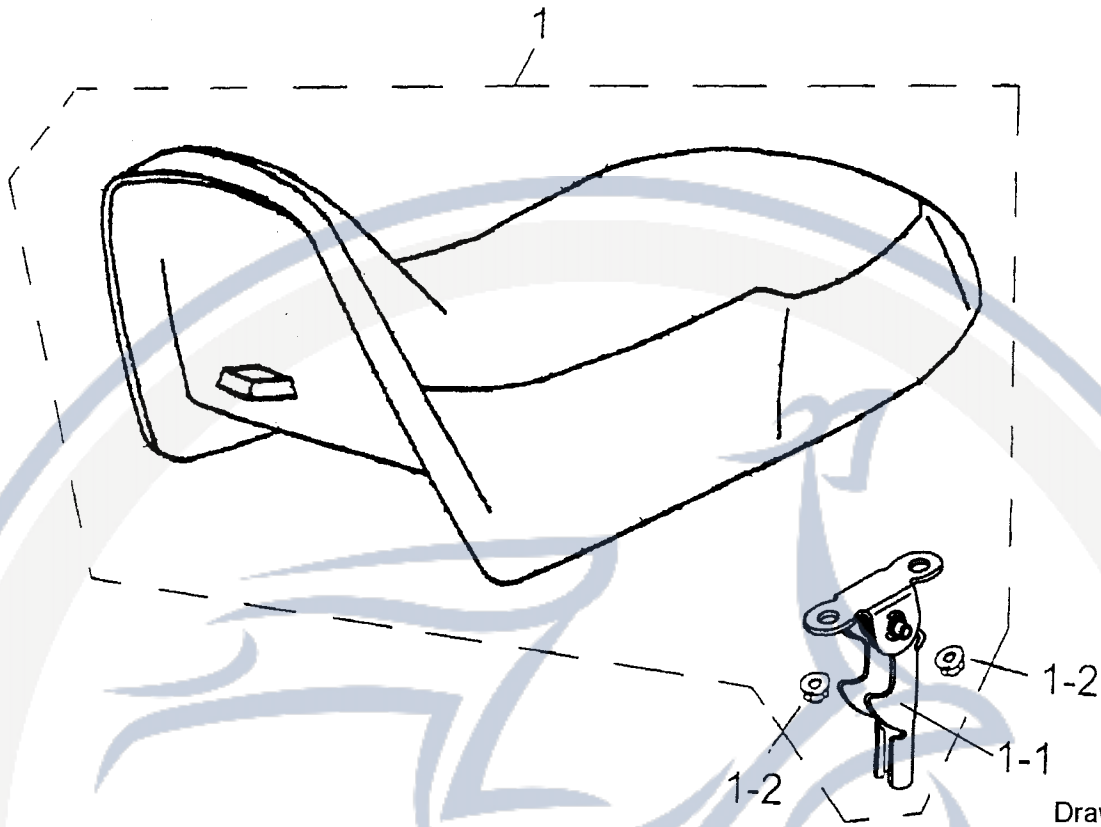
Drawing No:
019-016

| SALES MARK | P/N | DESCRIPTION | PART NO. | CUSTOMER NO. | CHINESE | Q'TY |
|------------|------|------------------------------------|----------------|--------------|-------------|------|
| 販賣記號 | 件號 | 英文名稱 | 部品番號 | 客戶番號 | 中文名稱 | 用量 |
| | 19-1 | FRONT FENDER (CAMO GREEN METALLIC) | 61100-182-G617 | | 前擋泥板(金蔥墨綠色) | 1 |
| | 19-1 | FRONT FENDER (YELLOW) | 61100-182-P053 | | 前擋泥板(黃色) | 1 |
| | 19-2 | REAR FENDER (CAMO GREEN METALLIC) | 61000-182-G617 | | 後擋泥板(金蔥墨綠色) | 1 |
| | 19-2 | REAR FENDER (YELLOW) | 61000-182-P053 | | 後擋泥板(黃色) | 1 |
| | 19-3 | FRONT RH. MUDFLAP | 61105-182-000 | | 前擋泥板右護邊 | 1 |
| | 19-4 | FRONT LH. MUDFLAP | 61110-182-000 | | 前擋泥板左護邊 | 1 |
| | 19-5 | REAR RH. MUDFLAP | 61005-182-000 | | 後擋泥板右護邊 | 1 |
| | 19-6 | REAR LH. MUDFLAP | 61010-182-000 | | 後擋泥板左護邊 | 1 |
| | 19-7 | O-RING | 91315-131-000 | | O型環 | 2 |

| | | | | |
|-------|---|-----------------|---------------|----|
| 19-8 | LICENSE PLATE | 33708-182-000 | 牌照板 | 1 |
| 19-9 | BATTERY RUBBER | 31510-131-000 | 電瓶防震墊 | 1 |
| 19-10 | PROTECTOR PAD | 80140-131-000 | 防熱貼紙 | 1 |
| 19-11 | HEX BOLT WITH PLAIN WASHER | 92000-06016-K | 六角螺栓附墊圈 | 4 |
| 19-12 | PAN PHILLIPS BOLT WITH PLAIN WASHER | 96318-06016-K | 十字扁頭螺栓附墊圈 | 4 |
| 19-13 | U PLATE NUT | 90344-06000-C | U型板螺帽 | 4 |
| 19-14 | HEX BOLT WITH FIX WASHER | 92003-06016-K | 六角螺栓附齒華司 | 2 |
| 19-15 | PAN PHILLIPS BOLT | 93100-05016-K | 十字扁圓頭螺栓 | 58 |
| 19-16 | NYLON INSERT LOCK NUT | 90350-05000-K | 止鬆螺帽 | 58 |
| 19-17 | PLAIN WASHER | 94101-0514010-K | 平墊圈 | 58 |
| 19-18 | FLANGE WASHER | 94150-0717050-K | 凸緣墊圈 | 2 |
| 19-19 | FLANGE WASHER | 94150-0717075-K | 凸緣墊圈 | 2 |
| 19-20 | FRONT FENDER COVER(CAMO GREEN METALLIC) | 61300-182-G617 | 前擋泥板飾板(金蔥墨綠色) | 1 |
| 19-20 | FRONT FENDER COVER (YELLOW) | 61300-182-P053 | 前擋泥板飾板(黃色) | 1 |
| 19-21 | TAPPING SCREW | 93903-04012-K | 自攻螺絲 | 4 |
| 19-22 | U PLATE NUT | 90345-04000-2T | U型板螺帽有勾角 | 2 |

Motorroller.de
- seit 1993 -

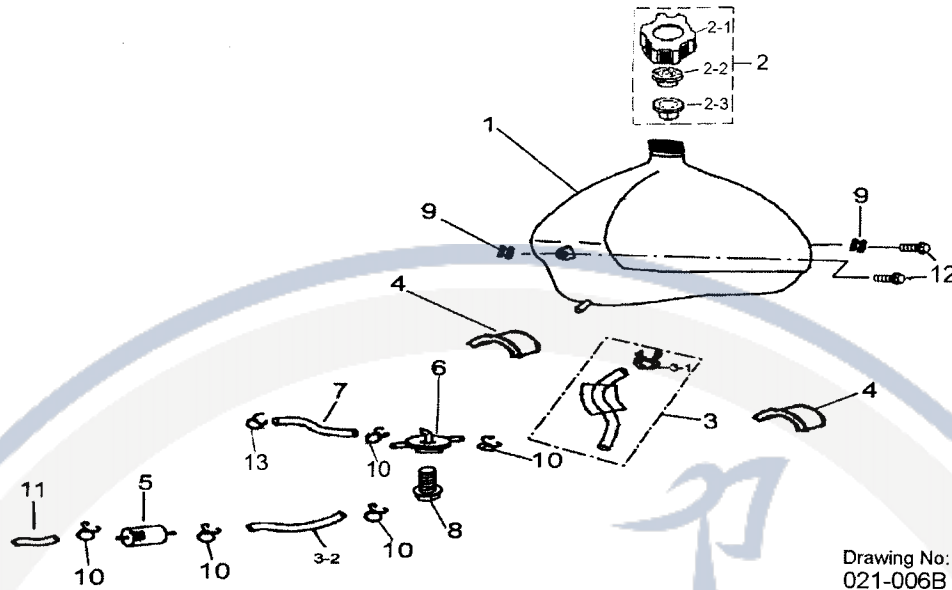
D-20 SEAT 座墊



Drawing No:
020-007

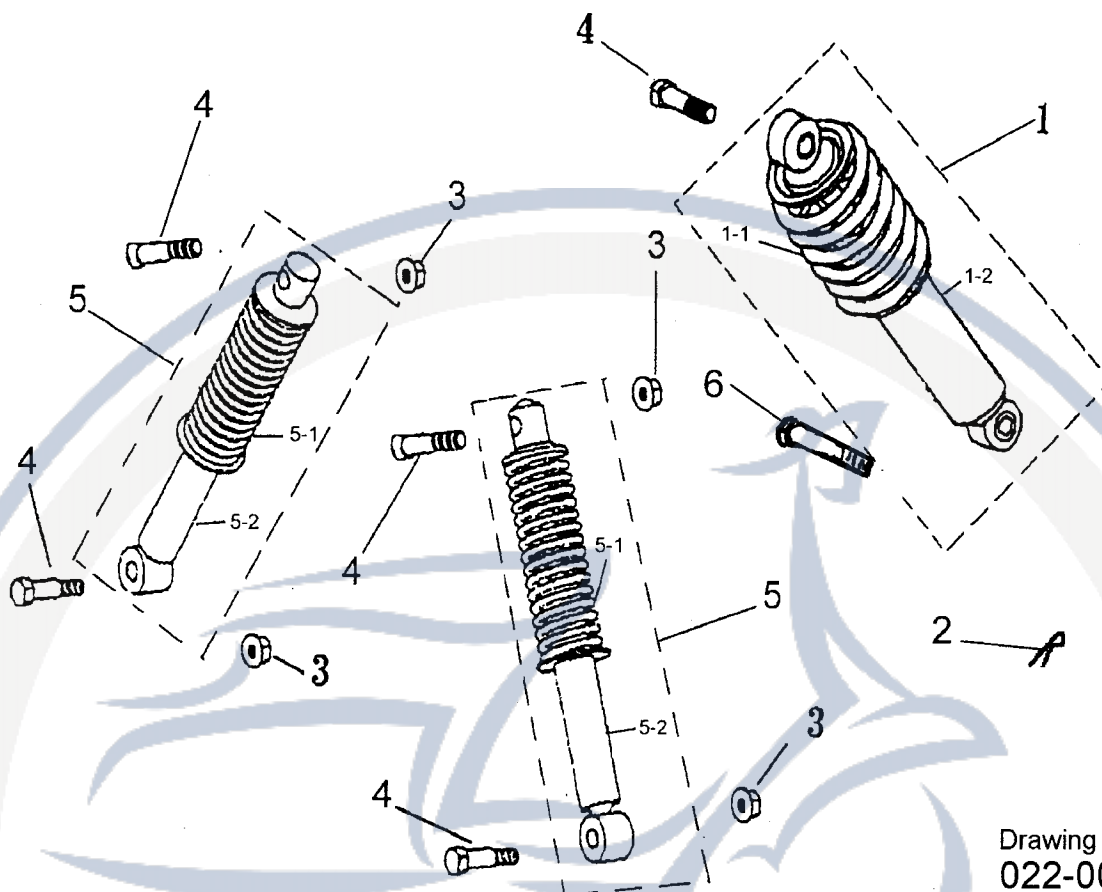
| SALES MARK 販賣記號 | P/N 件號 | DESCRIPTION 英文名稱 | PART NO. 部品番號 | CUSTOMER NO. 客戶番號 | CHINESE 中文名稱 | Q"TY 用量 |
|--------------------|-----------|---------------------|------------------|----------------------|-----------------|------------|
| | 20-1 | SEAT ASS'Y | 77200-182-000 | | 座墊 | 1 |
| | 20-1-1 | SEAT FIX HOOK | 77210-131-000 | | 座墊固定鉤總成 | 1 |
| | 20-1-2 | HEX FLANGE NUT | 94050-06000-C | | 六角緣面螺帽 | 2 |

D-21 FUEL TANK 汽油箱



| SALES MARK | P/N | DESCRIPTION | PART NO. | CUSTOMER NO. | CHINESE | Q'TY |
|------------|--------|--------------------------|-----------------|--------------|---------|------|
| 販賣記號 | 件號 | 英文名稱 | 部品番號 | 客戶番號 | 中文名稱 | 用量 |
| | 21-1 | FUEL TANK COMP | 17500-156-000 | | 汽油箱總成 | 1 |
| | 21-2 | FUEL TANK CAP ASS'Y | 17620-156-000 | | 汽油箱蓋總成 | 1 |
| | 21-2-1 | FUEL TANK CAP | 17623-156-000 | | 汽油箱蓋 | 1 |
| | 21-2-2 | BREATHER SHEET | 17621-156-000 | | 通氣板 | 1 |
| | 21-2-3 | BREATHER FILM | 17625-131-001 | | 通氣膜片 | 1 |
| | 21-3 | FUEL TUBE A | 94401-05009-1 | | 汽油管A | 1 |
| | 21-3-1 | CLIP | 94510-12000 | | 管夾 | 1 |
| | 21-3-2 | FUEL TUBE B | 94400-05009-100 | | 汽油管B | 1 |
| | 21-4 | FUEL TANK RUBBER MAT | 64319-131-000 | | 汽油箱防震墊 | 2 |
| | 21-5 | FUEL FILTER ASSY | 16952-111-000 | | 汽油過濾器 | 1 |
| | 21-6 | COCK ASS'Y,FUEL AUTO | 16950-111-000 | | 汽油杯 | 1 |
| | 21-7 | COCK ASS'Y,FUEL AUTO | 94400-04008-200 | | 負壓管 | 1 |
| | 21-8 | HEX FLANGE BOLT | 96000-06016-K | | 六角緣面螺栓 | 1 |
| | 21-9 | GROMMER | 83574-131-000 | | 腳踏板橡膠塞 | 2 |
| | 21-10 | CLIP | 94510-08000 | | 管夾 | 5 |
| | 21-11 | FUEL TUBE C | 94401-05009-50 | | 汽油管C | 1 |
| | 21-12 | HEX BOLT WITH FIX WASHER | 92000-06016-K | | 六角螺栓附墊圈 | 2 |
| | 21-13 | CLIP | 94510-06000 | | 管夾 | 1 |

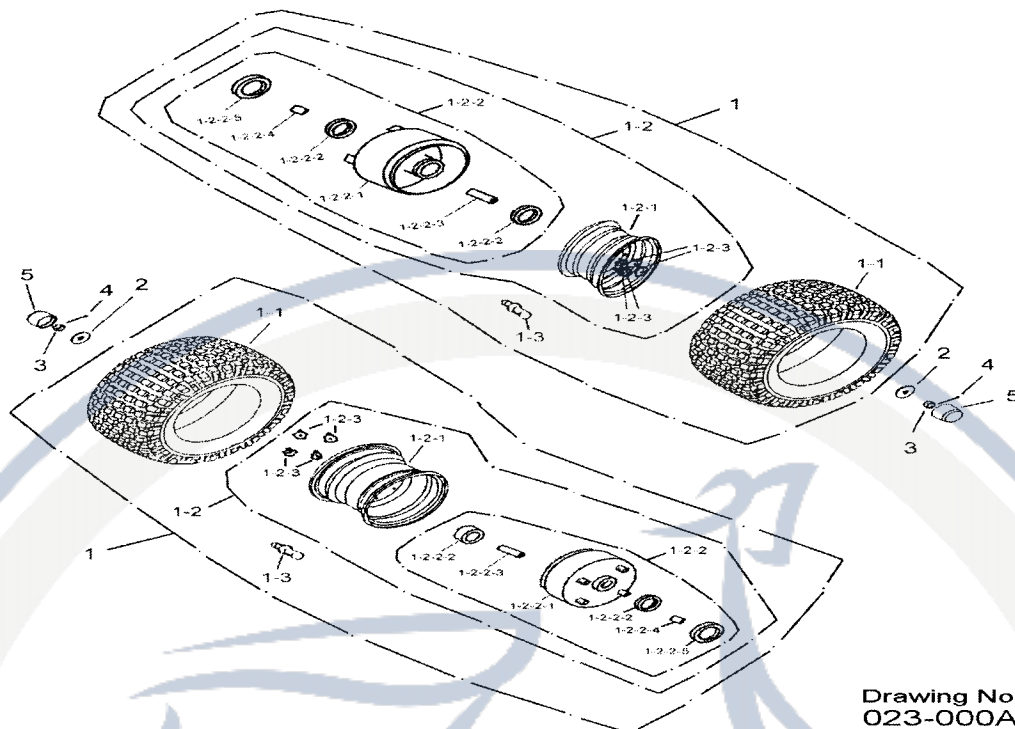
D-22 SUSPENSION 避震器



Drawing No:
022-003

| SALES MARK 販賣記號 | P/N 件號 | DESCRIPTION 英文名稱 | PART NO. 部品番號 | CUSTOMER NO. 客戶番號 | CHINESE 中文名稱 | Q'TY 用量 |
|--------------------|-----------|-------------------------------------|------------------|----------------------|-----------------|------------|
| | 22-1 | REAR SUSPENSION | 52400-156-00B | | 後避震器 | 1 |
| | 22-1-1 | REAR SUSPENSION SPRING | 52401-156-00B | | 後避震器彈簧 | 1 |
| | 22-1-2 | REAR SUSPENSION INNER TUBE COMP | 52402-156-000 | | 後避震器內筒組 | 1 |
| | 22-2 | COTTER PIN | 94201-24190 | | 開口銷 | 1 |
| | 22-3 | HEX FLANGE NUT | 94050-10000-C | | 六角緣面螺帽 | 4 |
| | 22-4 | HEX FLANGE NUT | 96000-10040-KL | | 六角緣面螺絲(耐落) | 5 |
| | 22-5 | FRONT SUSPENSION | 51100-156-00B | | 前避震器 | 2 |
| | 22-5-1 | FRONT SUSPENSION SPRING | 51101-156-00B | | 前避震器彈簧 | 2 |
| | 22-5-2 | FRONT SUSPENSION INNER TUBE COMP | 51102-156-000 | | 前避震器內筒組 | 2 |
| | 22-6 | REAR SUSPENSION FIX AXLE | 52415-156-000 | | 後避震器固定銷 | 1 |

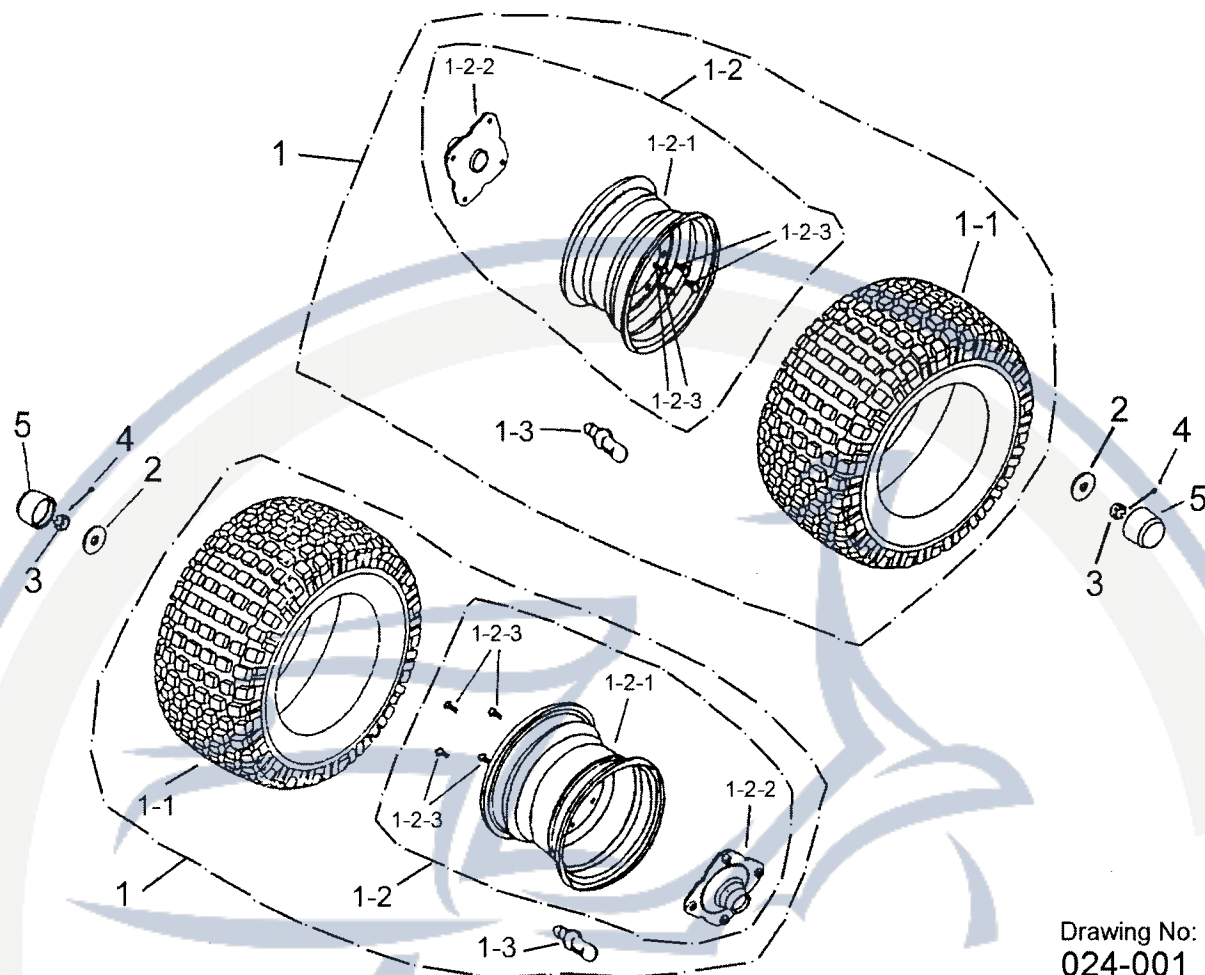
D-23 FRONT WHEEL 前輪組



Drawing No:
023-000A

| SALES MARK | P/N | DESCRIPTION | PART NO. | CUSTOMER NO. | CHINESE | Q'TY |
|------------|------------|------------------------|-----------------|--------------|----------|------|
| 販賣記號 | 件號 | 英文名稱 | 部品番號 | 客戶番號 | 中文名稱 | 用量 |
| | 23-1 | FRONT WHEEL ASS'Y | 42700-182-000 | | 前輪總成 | 2 |
| | 23-1-1 | TIRE | 42711-182-000 | | 輪胎 | 2 |
| | 23-1-2 | FRONT RIM ASS'Y | 42705-182-000 | | 輪框組合(前) | 2 |
| | 23-1-2-1 | WHEEL | 42701-182-000 | | 鋼圈(鐵灰色) | 2 |
| | 23-1-2-2 | FRONT BRAKE DRUM ASS'Y | 45005-156-001 | | 前剎車鼓總成 | 2 |
| | 23-1-2-2-1 | FRONT BRAKE DRUM | 45008-156-001 | | 前剎車鼓 | 2 |
| | 23-1-2-2-2 | BEARING | 96100-6003LU | | 滾珠軸承 | 4 |
| | 23-1-2-2-3 | INSIDE SPACER COLLAR | 44311-156-001 | | 內間隔管 | 2 |
| | 23-1-2-2-4 | OUTSIDE SPACER COLLAR | 44312-156-001 | | 外間隔管 | 2 |
| | 23-1-2-2-5 | OIL SEAL | 96500-2335060 | | 油封 | 2 |
| | 23-1-2-3 | NYLON INSERT LOCK NUT | 90350-10000-UC | | 止鬆螺帽(彈片) | 8 |
| | 23-1-3 | RIM VALVE | 42616-131-000 | | 氣門嘴 | 2 |
| | 23-2 | PLAIN WASHER | 94101-1440045-C | | 平墊圈 | 2 |
| | 23-3 | INSERT LOCK NUT | 90352-14000-C | | 開槽六角緣面螺帽 | 2 |
| | 23-4 | COTTER PIN | 94201-32320 | | 開口銷 | 2 |
| | 23-5 | RUBBER CAP | 42730-151-000 | | 橡膠套 | 2 |

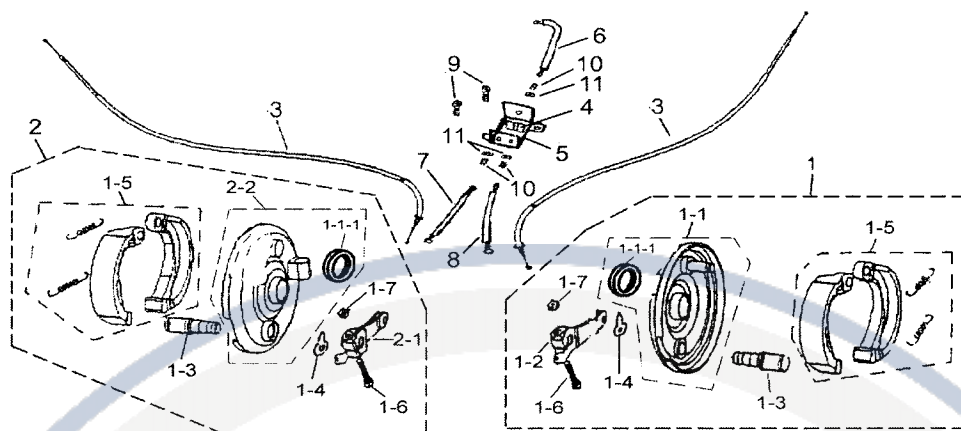
D-24 REAR WHEEL 後輪組



Drawing No:
024-001

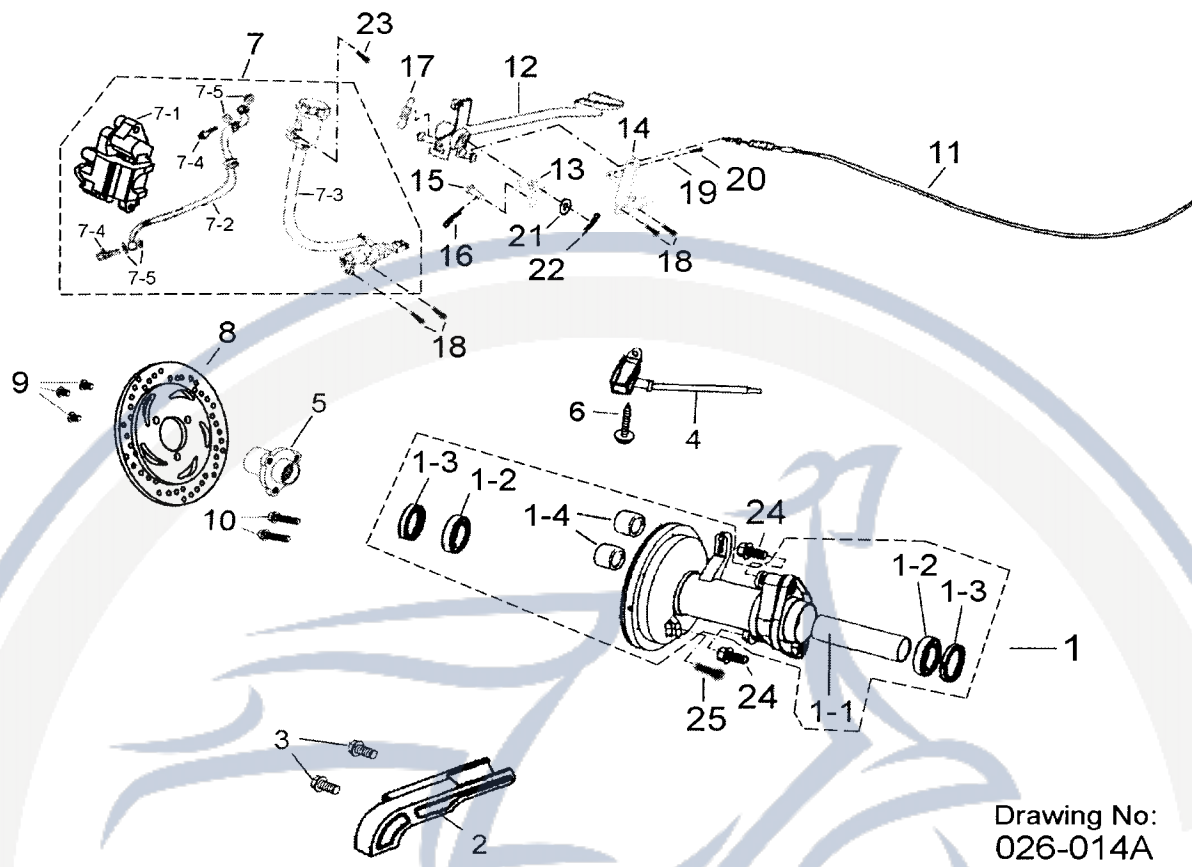
| SALES MARK | P/N | DESCRIPTION | PART NO. | CUSTOMER NO. | CHINESE | Q'TY |
|------------|----------|-----------------------|-----------------|--------------|----------|------|
| 販賣記號 | 件號 | 英文名稱 | 部品番號 | 客戶番號 | 中文名稱 | 用量 |
| | 24-1 | REAR WHEEL ASS'Y | 42800-182-000 | | 後輪總成 | 2 |
| | 24-1-1 | TIRE | 42811-182-000 | | 輪胎 | 2 |
| | 24-1-2 | REAR RIM ASS'Y (R) | 42706-182-000 | | 輪框組合(後) | 2 |
| | 24-1-2-1 | WHEEL | 42801-182-000 | | 鋼圈(鐵灰色) | 2 |
| | 24-1-2-2 | SHAFT CONNECTER | 97010-156-002 | | 軸連結塊(五彩) | 2 |
| | 24-1-2-3 | NYLON INSERT LOCK NUT | 90350-10000-UC | | 止鬆螺帽(彈片) | 8 |
| | 24-1-3 | RIM VALVE | 42616-131-000 | | 氣門嘴 | 2 |
| | 24-2 | PLAIN WASHER | 94101-1440045-C | | 平墊圈 | 2 |
| | 24-3 | INSERT LOCK NUT | 90352-14000-C | | 開槽六角緣面螺帽 | 2 |
| | 24-4 | COTTER PIN | 94201-32320 | | 開口銷 | 2 |
| | 24-5 | RUBBER CAP | 42730-151-000 | | 橡膠套 | 2 |

D-25 FRONT BRAKE DISK SYSTEM 前剎車組

Drawing No:
025-004A

| SALES MARK | P/N | DESCRIPTION | PART NO. | CUSTOMER NO. | CHINESE | Q'TY |
|------------|----------|-----------------------------------|---------------|--------------|----------|------|
| 販賣記號 | 件號 | 英文名稱 | 部品番號 | 客戶番號 | 中文名稱 | 用量 |
| | 25-1 | FRONT BRAKE PLATE ASS'Y (L) | 45009-159-001 | | 左前剎車盤總成 | 1 |
| | 25-1-1 | FRONT BRAKE PLATE (L) | 45010-156-002 | | 前剎車盤(左) | 1 |
| | 25-1-1-1 | OIL SEAL | 96500-4052060 | | 油封 | 2 |
| | 25-1-2 | FRONT BRAKE ARM (L) | 45410-159-000 | | 前剎車搖臂(左) | 1 |
| | 25-1-3 | FRONT BRAKE CAM SHAFT | 45141-156-000 | | 前剎車凸輪軸 | 2 |
| | 25-1-4 | BRAKE GUIDE | 45142-156-000 | | 剎車指示器 | 2 |
| | 25-1-5 | BRAKE SHOE COMP | 43120-111-00C | | 煞車塊組合 | 2 |
| | 25-1-6 | HEX BOLT | 92000-06030-B | | 六角螺栓 | 2 |
| | 25-1-7 | HEX NUT | 94001-06000-C | | 六角螺帽 | 2 |
| | 25-2 | FRONT BRAKE PLATE ASS'Y (R) | 45019-159-001 | | 右前剎車盤總成 | 1 |
| | 25-2-1 | FRONT BRAKE ARM (R) | 45409-159-000 | | 前剎車搖臂(右) | 1 |
| | 25-2-2 | FRONT BRAKE PLATE (R) | 45020-156-002 | | 前剎車盤(右) | 1 |
| | 25-3 | FRONT BRAKE CABLE | 45450201-000 | | 前剎車導線 | 2 |
| | 25-4 | CONNECTER WIRE LEVELR | 45452-133-000 | | 匯線搖桿 | 1 |
| | 25-5 | CONNECTER WIRE SEAT | 45453-133-000 | | 匯線座 | 1 |
| | 25-6 | FRONT PEDAL BRAKE CONNECTED CABLE | 45454201-000 | | 前腳踩煞車線 | 1 |
| | 25-7 | R.FRONT PEDAL BRAKE CABLE | 45455201-000 | | 右前腳踩煞車線 | 1 |
| | 25-8 | L.FRONT PEDAL BRAKE CABLE | 45457201-000 | | 左前腳踩煞車線 | 1 |
| | 25-9 | FLAT HEAD PHILLIPS BOLT | 93902-06008-B | | 十字皿頭螺絲 | 2 |
| | 25-10 | INSERT BOLT | 45421-133-000 | | 開槽螺栓 | 3 |
| | 25-11 | INSERT NUT | 45422-133-000 | | 開槽墊圈 | 3 |

D-26 REAR BRAKE DISK SYSTEM 後剎車組

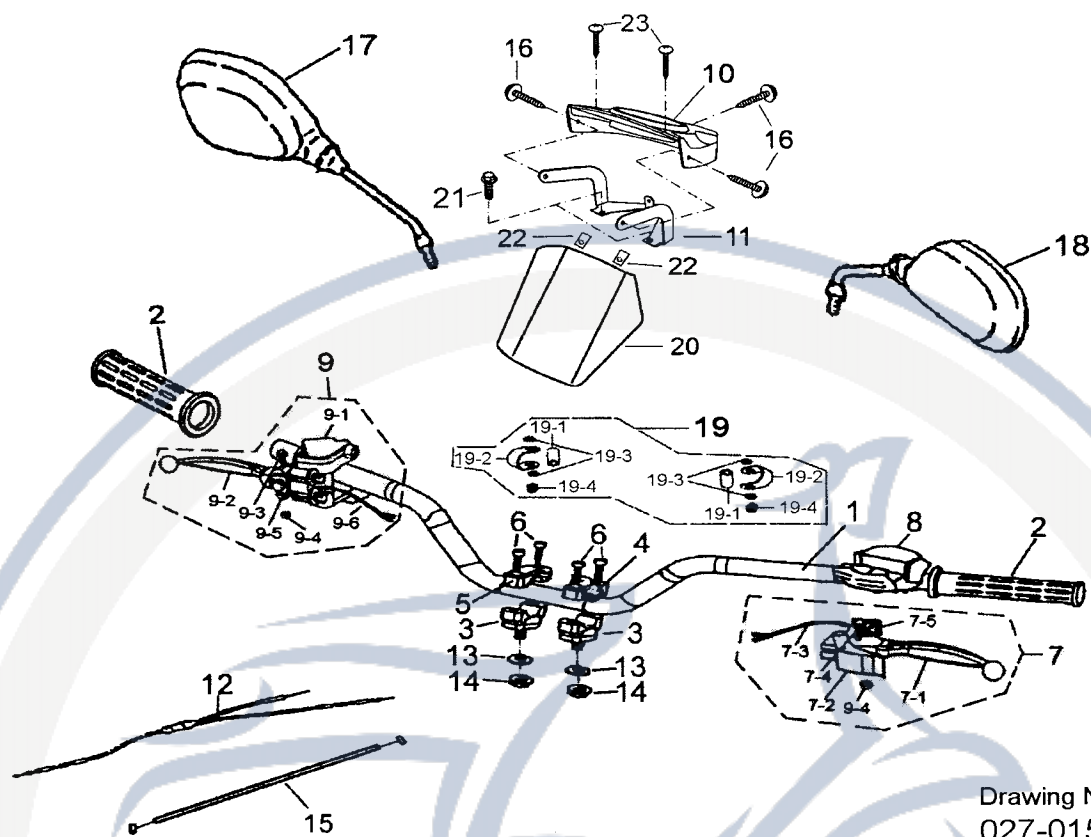


Drawing No: 026-014A

| SALES MARK | P/N | DESCRIPTION | PART NO. | CUSTOMER NO. | CHINESE | Q'TY |
|------------|--------|--------------------------------|---------------|--------------|-----------|------|
| 販賣記號 | 件號 | 英文名稱 | 部品番號 | 客戶番號 | 中文名稱 | 用量 |
| | 26-1 | REAR WHEEL AXLE FIX SEAT ASS'Y | 42803-182-A00 | | 後輪軸固定座總成 | 1 |
| | 26-1-1 | SPACER COLLAR | 42810-156-001 | | 間隔管 | 1 |
| | 26-1-2 | BEARING | 96100-6007ZZ | | 軸承 | 2 |
| | 26-1-3 | OIL SEAL | 96500-426208 | | 油封-OS8495 | 2 |
| | 26-1-4 | SPACERING | 51317-182-000 | | 卡鉗固定管 | 2 |
| | 26-2 | REAR COVER | 40550-156-A00 | | 鍊輪後蓋 | 1 |
| | 26-3 | HEX FLANGE BOLT | 96000-08012-K | | 六角緣面螺栓 | 2 |
| | 26-4 | TOUCH SWITCH | 34912-156-00A | | 觸動開關 | 1 |
| | 26-5 | BRAKE DISK HOLDER | 45490-182-000 | | 煞車圓盤固定座 | 1 |
| | 26-6 | PAN PHILLIPS BOLT WITH WASHER | 93501-03010-K | | 十字圓頭螺栓附墊圈 | 1 |

| | | | | |
|--------|-------------------------------|-----------------|-----------|---|
| 26-7 | DISK | 49999202-000 | 後碟刹刹車總成 | 1 |
| 26-7-1 | CALIPER ASS'Y | 45000-182-000 | 卡鉗總成 | 1 |
| 26-7-2 | BRAKE HOSE | 45450-182-000 | 煞車油管 | 1 |
| 26-7-3 | MASTER CYLINDER SUB ASS'Y | 43415-181-000 | 煞車泵總成 | 1 |
| 26-7-4 | BRAKE HOSE SET BOLT | 45456-111-000 | 油管固定螺栓 | 2 |
| 26-7-5 | PLATE WASHER | 94101-1014510-B | 平墊圈 | 4 |
| 26-8 | BRAKE DISK | 45010-182-000 | 煞車圓盤 | 1 |
| 26-9 | BRAKE DISK HEX SOCKET BOLT | 45016-182-000 | 煞車盤固定螺栓 | 3 |
| 26-10 | HEX WASHER FACE BOLT | 96000-08038-KL | 六角緣面螺栓 | 2 |
| 26-11 | REAR BRAKE CABLE | 43450-182-000 | 後煞車導線 | 1 |
| 26-12 | PENDAL BRAKE LEVER | 43456202-000 | 腳踩煞車搖桿 | 1 |
| 26-13 | HYDRAULIC CYLINDER | 43457201-000 | 油壓缸作動桿 | 1 |
| 26-14 | REAR BRAKE CABLE FIXED HOLDER | 50357201-000 | 後煞車導線固定座 | 1 |
| 26-15 | PARALLEL PIN | 94302-07018 | 帶頭銷 | 1 |
| 26-16 | COTTER PIN | 94203-12200 | 開尾銷 | 1 |
| 26-17 | SPRING | 43421201-000 | 彈簧 | 1 |
| 26-18 | HEX BOLT WITH SPRING WASHER | 92001-08014-KL | 六角螺栓附彈簧墊圈 | 4 |
| 26-19 | HEX NUT | 94001-06000-C | 六角螺帽 | 1 |
| 26-20 | HEX WASHER FACE BOLT | 96000-06016-K | 六角緣面螺栓 | 1 |
| 26-21 | PLAIN WASHER | 94101-1321020-K | 平墊圈 | 1 |
| 26-22 | COTTER PIN | 94201-24190 | 開口銷 | 1 |
| 26-23 | HEX WASHER FACE BOLT | 96000-06012-10K | 六角緣面螺栓 | 1 |
| 26-24 | HEX FLANGE BOLT | 96000-12032-C | 六角緣面螺栓 | 2 |
| 26-25 | HEX WASHER FACE BOLT | 96000-12028-C | 六角緣面螺栓 | 2 |

D-27 HANDLE STEERING COMP 轉向手柄

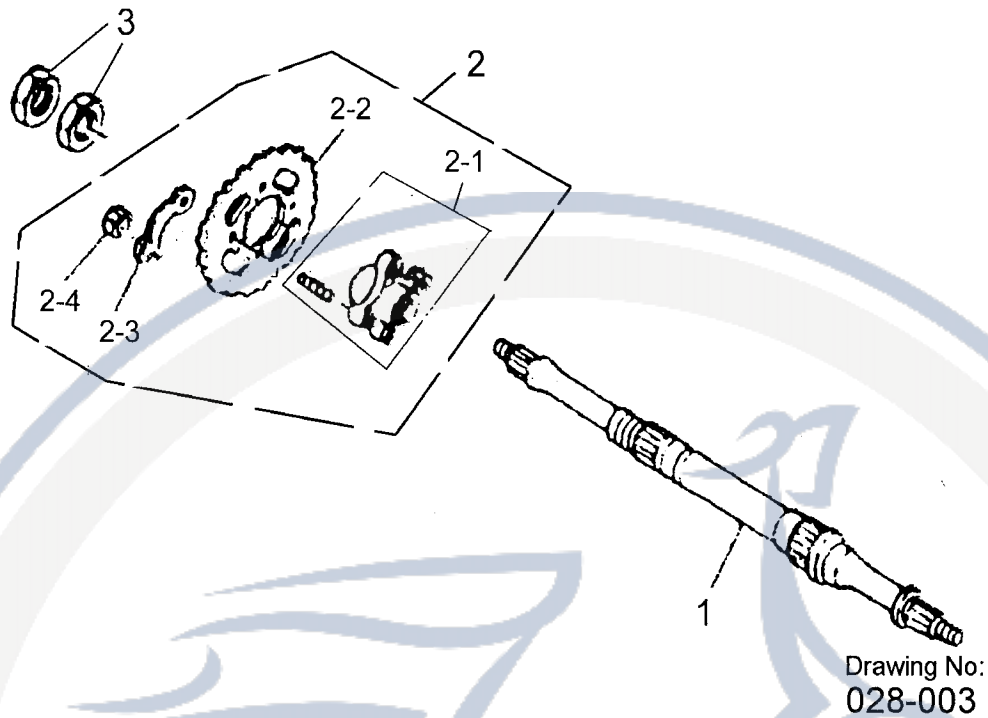


Drawing No:
027-015B

| SALES MARK | P/N | DESCRIPTION | PART NO. | CUSTOMER NO. | CHINESE | Q'TY |
|------------|--------|-------------------------------|---------------|--------------|------------|------|
| 販賣記號 | 件號 | 英文名稱 | 部品番號 | 客戶番號 | 中文名稱 | 用量 |
| | 27-1 | HANDLE BAR COMP | 53100-182-A00 | | 轉向手柄(鈦銀) | 1 |
| | 27-2 | HANDLE GRIP | 53166-170-000 | | 握把 | 2 |
| | 27-3 | HANDLE BAR CLAMP SADDLE | 53200-131-000 | | 轉向手柄固定座 | 2 |
| | 27-4 | HANDLE BAR CLAMP COVER (L) | 53210-131-000 | | 轉向手柄固定蓋(左) | 1 |
| | 27-5 | HANDLE BAR CLAMP COVER (R) | 53220-131-000 | | 轉向手柄固定蓋(右) | 1 |
| | 27-6 | HEX SOCKET BOLT | 91000-06025-K | | 六角承窩螺栓 | 4 |
| | 27-7 | LEFT LEVER ASS'Y | 53171-156-000 | | 左把手控制總成 | 1 |
| | 27-7-1 | L. SIDE LEVER | 53178-131-000 | | 左把手 | 1 |
| | 27-7-2 | HAND BRAKE PIECE | 53179-131-000 | | 手剎車塊 | 1 |
| | 27-7-3 | BRAKE SENSOR SWITCH CABLE (L) | 53173-131-000 | | 左剎車感應線 | 1 |
| | 27-7-4 | L.LEVER SET BOLT | 90116-131-000 | | 左把手固定螺栓 | 1 |

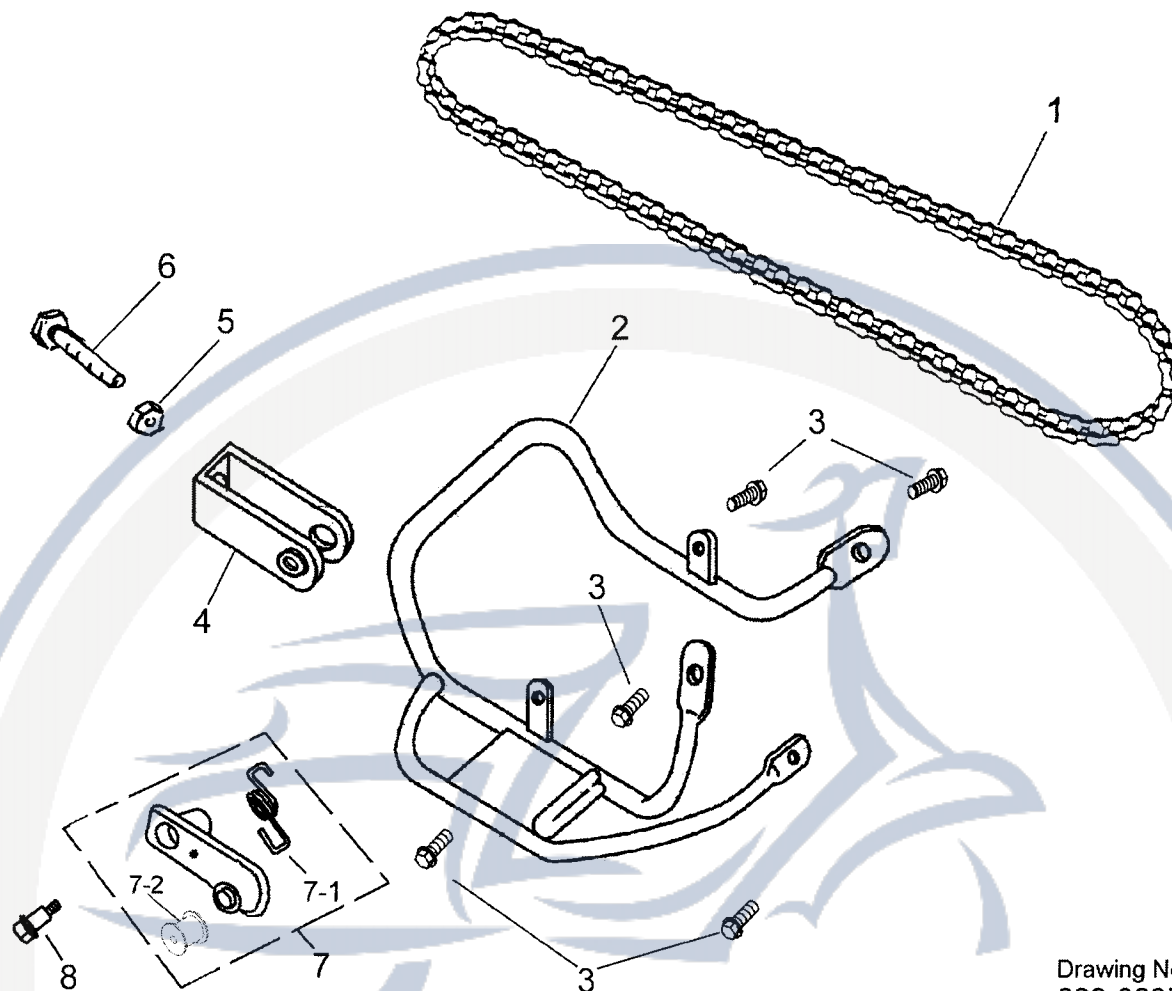
| | | | | | |
|---------|--------------------------------------|-----------------|--|----------|---|
| 27-7-5 | LEFT LEVEL FIXER | 53170-131-000 | | 左把手固定座 | 1 |
| 27-8 | L. SWITCH ASS'Y | 35151-181-000 | | 左開關總成 | 1 |
| 27-9 | RIGHT LEVER ASS'Y | 53172-131-00A1 | | 右把手控制總成 | 1 |
| 27-9-1 | R. SIDE LEVER SEAT | 53176-131-000 | | 右把手座 | 1 |
| 27-9-2 | R. SIDE LEVELR | 53175-131-000 | | 右把手 | 1 |
| 27-9-3 | RIGHT LEVER SET BOLT | 90115-131-000 | | 右把手固定螺栓 | 1 |
| 27-9-4 | NYLON INSERT LOCK NUT | 90350-06000-K | | 止鬆螺帽 | 2 |
| 27-9-5 | CABLE STABILIZER | 53177-131-000 | | 煞車導線固定座 | 1 |
| 27-9-6 | BRAKE SENSOR SWITCH CABLE (R) | 53174-131-000 | | 右煞車感應線 | 1 |
| 27-10 | HANDLE BAR UPPER POD | 64211-181-000 | | 手把上蓋 | 1 |
| 27-11 | PROTECT COVER FIX PLATE | 53310-181-00A | | 手把蓋固定片 | 1 |
| 27-12 | THROTTLE CABLE | 17910-182-000 | | 節流導線 | 1 |
| 27-13 | PLAIN WASHER | 94101-1022020-C | | 平墊圈 | 2 |
| 27-14 | NYLON INSERT LOCK NUT | 90350-10000-C | | 止鬆螺帽 | 2 |
| 27-15 | MANUAL CHOKE WIRE | 17920-182-000 | | 手動阻風門導線 | 1 |
| 27-16 | PAN PHILLIPS BOLT | 93100-05016-K | | 十字扁圓頭螺栓 | 3 |
| 27-17 | R.BACK VIEW MIRROR | 88110-159-001 | | 右後視鏡 | 1 |
| 27-18 | L.BACK VIEW MIRROR | 88120-159-001 | | 左後視鏡 | 1 |
| 27-19 | KIT FOR REARVIEW MIRROR | 88121-131-000 | | 後視鏡附件包 | 1 |
| 27-19-1 | DISTANCE RING | 88122-131-000 | | 定距套 | 2 |
| 27-19-2 | REARVIEW FIXED PIECE | 88130-131-00A | | 後視鏡固定束套 | 2 |
| 27-19-3 | PLAIN WASHER | 94101-131-000 | | 平墊圈 | 4 |
| 27-19-4 | NYLON INSERT LOCK NUT | 90350-08000-UK | | 六角止鬆螺帽 | 2 |
| 27-20 | SUNSHINY HOOD | 64212-182-000 | | 遮陽板 | 1 |
| 27-21 | HEX WASHER FACE BOLT | 96000-06012-10K | | 六角緣面螺栓 | 2 |
| 27-22 | U PLATE NUT | 90345-04000-2T | | U型板螺帽有勾角 | 2 |
| 27-23 | TAPPING SCREW TRUSS HEAD PHILLIPS | 93903-04012-K | | 自攻螺絲 | 2 |

D-28 REAR WHEEL AXLE 後輪軸



| SALES MARK | P/N | DESCRIPTION | PART NO. | CUSTOMER NO. | CHINESE | Q'TY |
|------------|--------|---------------------------------|---------------|--------------|---------|------|
| 販賣記號 | 件號 | 英文名稱 | 部品番號 | 客戶番號 | 中文名稱 | 用量 |
| | 28-1 | REAR AXLE | 97000-158-000 | | 後輪軸 | 1 |
| | 28-2 | FINAL DRIVE SPROCKET ASS'Y | 41220-156-000 | | 後鏈輪組合 | 1 |
| | 28-2-1 | FINAL DRIVE SPROCKET HOLDER SET | 41210-156-000 | | 後主鏈輪座組 | 1 |
| | 28-2-2 | FINAL DRIVE SPROCKET | 41201-156-000 | | 後鏈輪 | 1 |
| | 28-2-3 | FINAL DRIVE SPROCKET WASHER | 41202-156-000 | | 後鏈輪固定墊圈 | 2 |
| | 28-2-4 | HEX NUT | 94002-10000-C | | 六角螺帽 | 4 |
| | 28-3 | HEX NUT | 94001-33000-K | | 六角螺帽 | 2 |

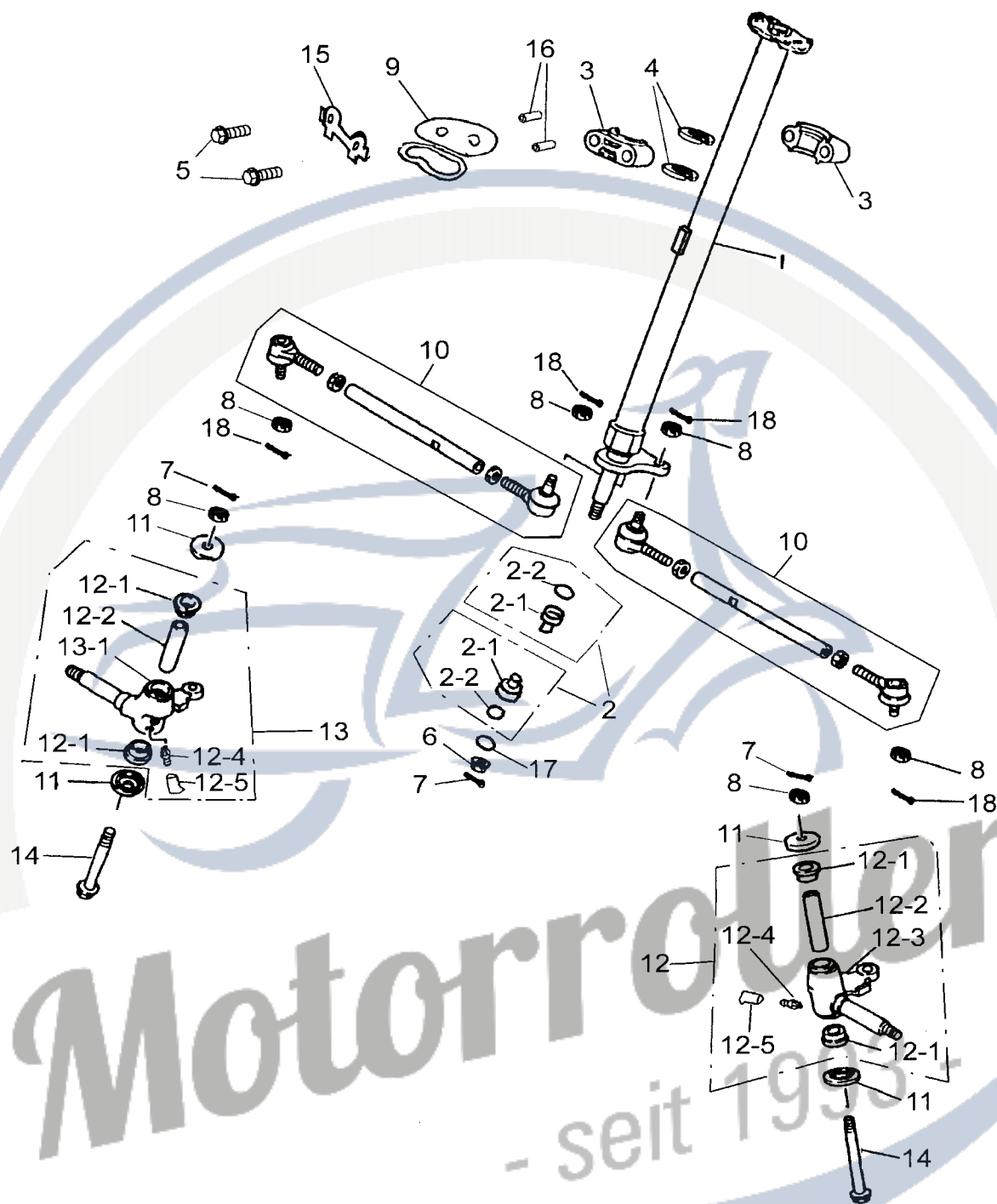
D-29 CHAIN 鏈



Drawing No:
029-002D

| SALES MARK | P/N | DESCRIPTION | PART NO. | CUSTOMER NO. | CHINESE | Q'TY |
|------------|--------|-------------------|---------------|--------------|-----------|------|
| 販賣記號 | 件號 | 英文名稱 | 部品番號 | 客戶番號 | 中文名稱 | 用量 |
| | 29-1 | PRIVE CHAIN ASS'Y | 40530-159-001 | | 驅動鏈條總成 | 1 |
| | 29-2 | PROTECT COVER | 40520-182-A00 | | 後鏈輪保護蓋 | 1 |
| | 29-3 | HEX FLANGE BOLT | 96000-08016-K | | 六角緣面螺栓 | 5 |
| | 29-4 | ADJUSTER , CHAIN | 40543-156-000 | | 鏈條調節器 | 1 |
| | 29-5 | HEX FLANGE NUT | 94050-08000-C | | 六角緣面螺帽 | 1 |
| | 29-6 | HEX BOLT | 92000-08060-B | | 六角螺栓 (全牙) | 1 |
| | 29-7 | CHAIN SUPPORTER | 40540-156-002 | | 鏈條支撐器 | 1 |
| | 29-7-1 | RETURN SPRING | 40541-156-000 | | 彈簧 | 1 |
| | 29-7-2 | PLASTIC ROLLER | 40545-156-000 | | 鏈條壓輪 | 1 |
| | 29-8 | HEX FLANGE BOLT | 90108-153-000 | | 六角緣面螺栓 | 1 |

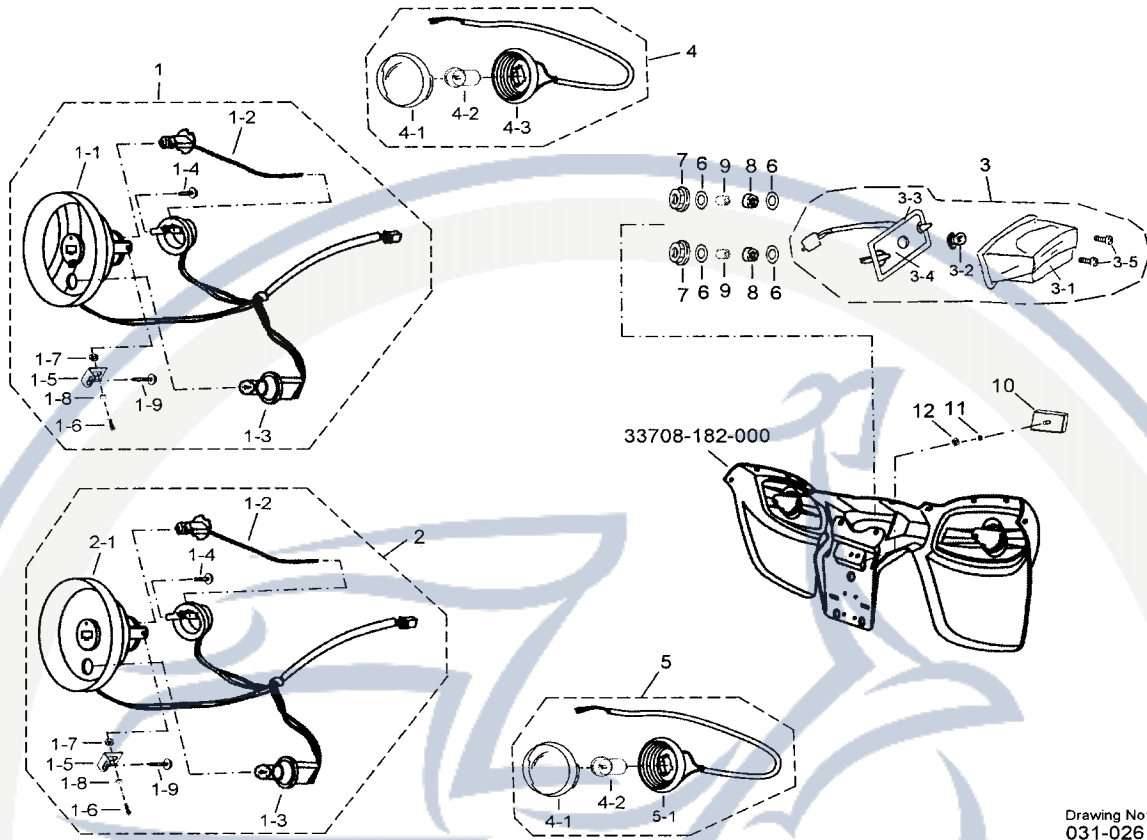
D-30 STEERING 轉向組



Drawing No:
030-006A

| SALES MARK | P/N | DESCRIPTION | PART NO. | CUSTOMER NO. | CHINESE | Q'TY |
|------------|---------|-------------------------------|-----------------|--------------|----------|------|
| 販賣記號 | 件號 | 英文名稱 | 部品番號 | 客戶番號 | 中文名稱 | 用量 |
| | 30-1 | STEERING SHAFT | 51107201-A00 | | 轉向軸 | 1 |
| | 30-2 | STEERING BEARING SEAT SET | 51115-156-000 | | 轉向軸承座組 | 2 |
| | 30-2-1 | STEERING BEARING SEAT | 51111-156-000 | | 轉向軸承座 | 2 |
| | 30-2-2 | O-RING | 91322-156-000 | | O型環 | 2 |
| | 30-3 | STEERING SHAFT HOLD | 53500-156-000 | | 轉向軸固定座 | 2 |
| | 30-4 | STEERING SHAFT OIL SEAL | 51220-156-000 | | 轉向軸油封 | 2 |
| | 30-5 | HEX BOLT | 92000-08060-B | | 六角螺栓 | 2 |
| | 30-6 | HEX FLANGE NUT WITH SERRATION | 90350-10000-UC | | 止鬆螺帽(彈片) | 1 |
| | 30-7 | COTTER PIN | 94201-24190 | | 開口銷 | 3 |
| | 30-8 | INSERT LOCK NUT | 90352-10000-C | | 開槽六角緣面螺帽 | 6 |
| | 30-9 | CABLE FIX SEAT | 51318-156-000 | | 導線固定座 | 1 |
| | 30-10 | STEERING TIE-ROD ASS'Y | 53410-156-000 | | 轉向接頭拉桿 | 2 |
| | 30-11 | DUST COVER | 52424-156-000 | | 防塵蓋 | 4 |
| | 30-12 | KNUCKLE SET (L) | 51325-156-001 | | 轉向關節組(左) | 1 |
| | 30-12-1 | KNUCKLE HOLD | 51315-156-000 | | 轉向關節固定座 | 4 |
| | 30-12-2 | SPACER RING | 51316-156-000 | | 間隔環 | 2 |
| | 30-12-3 | KNUCKLE (L) | 51310-156-001 | | 轉向關節(左) | 1 |
| | 30-12-4 | GREASE VALVE | 51300-131-000 | | 注油閥 | 2 |
| | 30-12-5 | GREASE VALVE RUBBER CAP | 51301-131-000 | | 注油閥橡皮蓋 | 2 |
| | 30-13 | KNUCKLE SET (R) | 51330-156-001 | | 轉向關節組(右) | 1 |
| | 30-13-1 | KNUCKLE (R) | 51320-156-001 | | 轉向關節(右) | 1 |
| | 30-14 | HEX FLANGE BOLT WITH HOLD | 96200-10105-K | | 六角緣面螺栓有孔 | 2 |
| | 30-15 | SPRING WASHER | 51319-156-000 | | 彈簧墊片 | 1 |
| | 30-16 | SPACE RING | 51317-156-000 | | 間隔環 | 2 |
| | 30-17 | COPPER WASHER | 94101-1022010-U | | 銅墊圈 | 1 |
| | 30-18 | COTTER PIN | 94201-16190 | | 開口銷 | 4 |

D-31 HEAD LIGHT , TAIL LIGHT 前燈、後燈

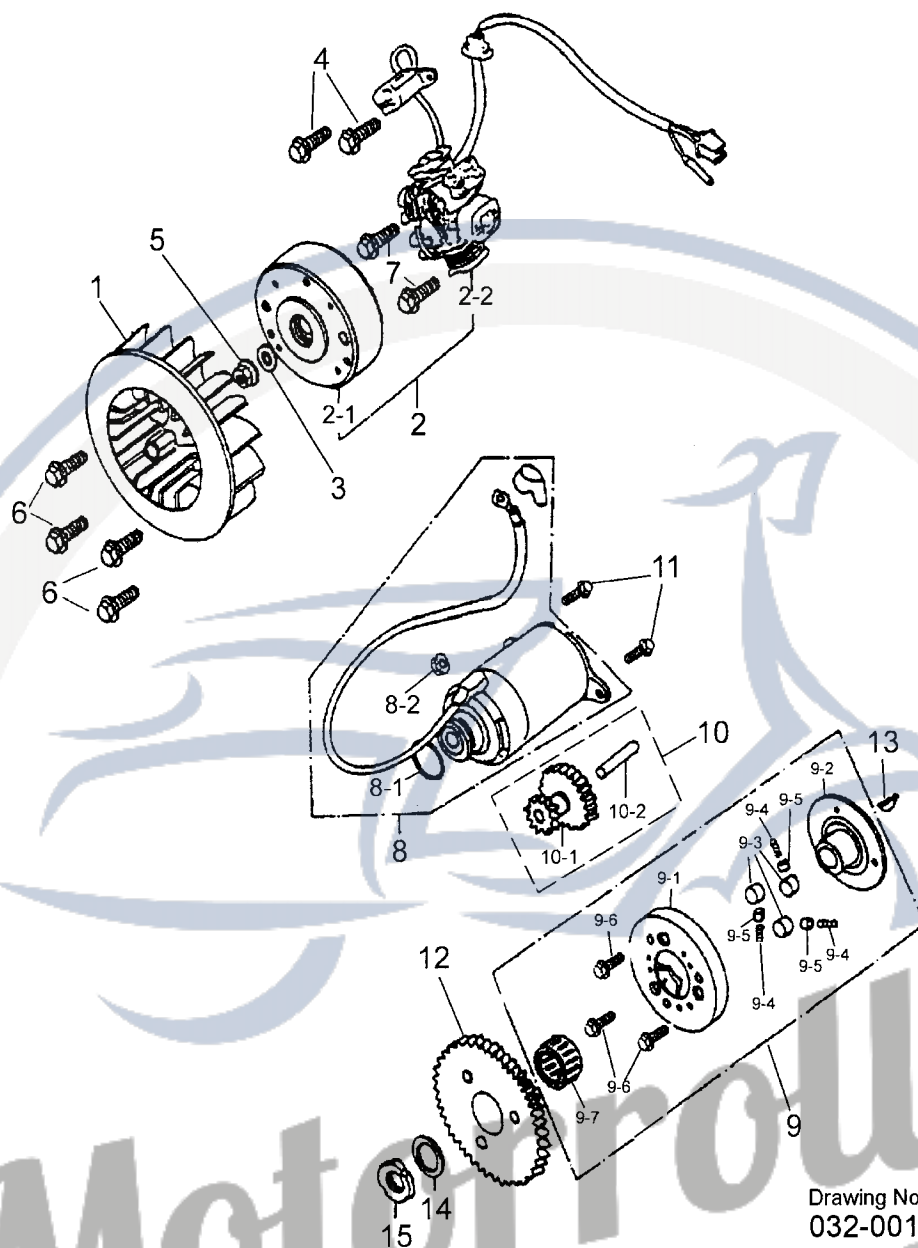


Drawing No:
031-026

| SALES MARK 販賣記號 | P/N 件號 | DESCRIPTION 英文名稱 | PART NO. 部品番號 | CUSTOMER NO. 客戶番號 | CHINESE 中文名稱 | Q'TY 用量 |
|--------------------|-----------|-----------------------|------------------|----------------------|-----------------|------------|
| | 31-1 | LOW BEAM ASS'Y | 33100203-000 | | 近燈總成 | 1 |
| | 31-1-1 | LOW BEAM SOCKET ASS'Y | 33110201-000 | | 近燈燈座組 | 1 |
| | 31-1-2 | BULB | 34901201-000 | | 燈泡 | 2 |
| | 31-1-3 | POSITION LIGHT BULB | 34909201-000 | | 位置燈泡 | 2 |
| | 31-1-4 | PAN PHILLIPS BOLT | 93100-03006-B | | 十字扁圓頭螺栓 | 2 |
| | 31-1-5 | FIX PLATE | 33122201-000 | | 遠近燈固定板 | 4 |
| | 31-1-6 | HEX BOLT | 92000-06012-K | | 六角螺栓 | 4 |

| | | | | |
|--------|------------------------|-----------------|---------|---|
| 31-1-7 | HEX NUT | 94001-06000-K | 六角螺帽 | 4 |
| 31-1-8 | SPRING WASHER | 94111-0610010 | 彈簧墊圈 | 4 |
| 31-1-9 | TAPPING SCREW | 93903-05012-K | 自攻螺絲 | 4 |
| 31-2 | HIGH BEAM ASS'Y | 33100204-000 | 遠燈總成 | 1 |
| 31-2-1 | HIGH BEAM SOCKET ASS'Y | 33736201-000 | 遠燈燈座組 | 1 |
| 31-3 | TAIL LIGHT ASS'Y | 33700-131-00A | 後燈組 | 1 |
| 31-3-1 | TAIL LIGHT LENS | 33702-131-00A | 後燈殼 | 1 |
| 31-3-2 | TAIL LIGHT BULB | 33906-116-00A | 燈泡 | 1 |
| 31-3-3 | WATERPROOF GASKET | 33716-131-000 | 防水泡綿 | 1 |
| 31-3-4 | REAR LIGHT SOCKET | 33711-131-00A | 後燈座 | 1 |
| 31-3-5 | PAN PHILLIPS BOLT | 95500-04033-SUS | 十字圓頭螺栓 | 2 |
| 31-4 | RIGHT SINGAL ASS'Y | 33400-182-000 | 右方向燈組 | 2 |
| 31-4-1 | SIGNAL COVER | 33402201-000 | 方向燈殼 | 4 |
| 31-4-2 | BULB | 33905201-000 | 方向燈泡 | 4 |
| 31-4-3 | RIGHT SINGAL REFLECTOR | 33401201-000 | 右方向燈反射鏡 | 2 |
| 31-5 | LEFT SINGAL ASS'Y | 33450-182-000 | 左方向燈組 | 2 |
| 31-5-1 | LEFT SINGAL REFLECTOR | 33451201-000 | 左方向燈反射鏡 | 2 |
| 31-6 | PLAIN WASHER | 94101-0619010-C | 平墊圈 | 4 |
| 31-7 | HEX FLANGE NUT | 94050-06000-C | 六角緣面螺帽 | 2 |
| 31-8 | RUBBER BUSHING | 96400-101808 | 橡膠襯套 | 2 |
| 31-9 | DISTANCE RING | 51311-159-000 | 定距套 | 2 |
| 31-10 | REFLECCTOR | 33741-131-000 | 後反射片 | 1 |
| 31-11 | PLAIN WASHER | 94101-0519010-K | 平墊圈 | 1 |
| 31-12 | HEX FLANGE NUT | 94050-05000-C | 六角緣面螺帽 | 1 |

D-32 GENERATOR, START MOTOR 發電機總成、起動馬達

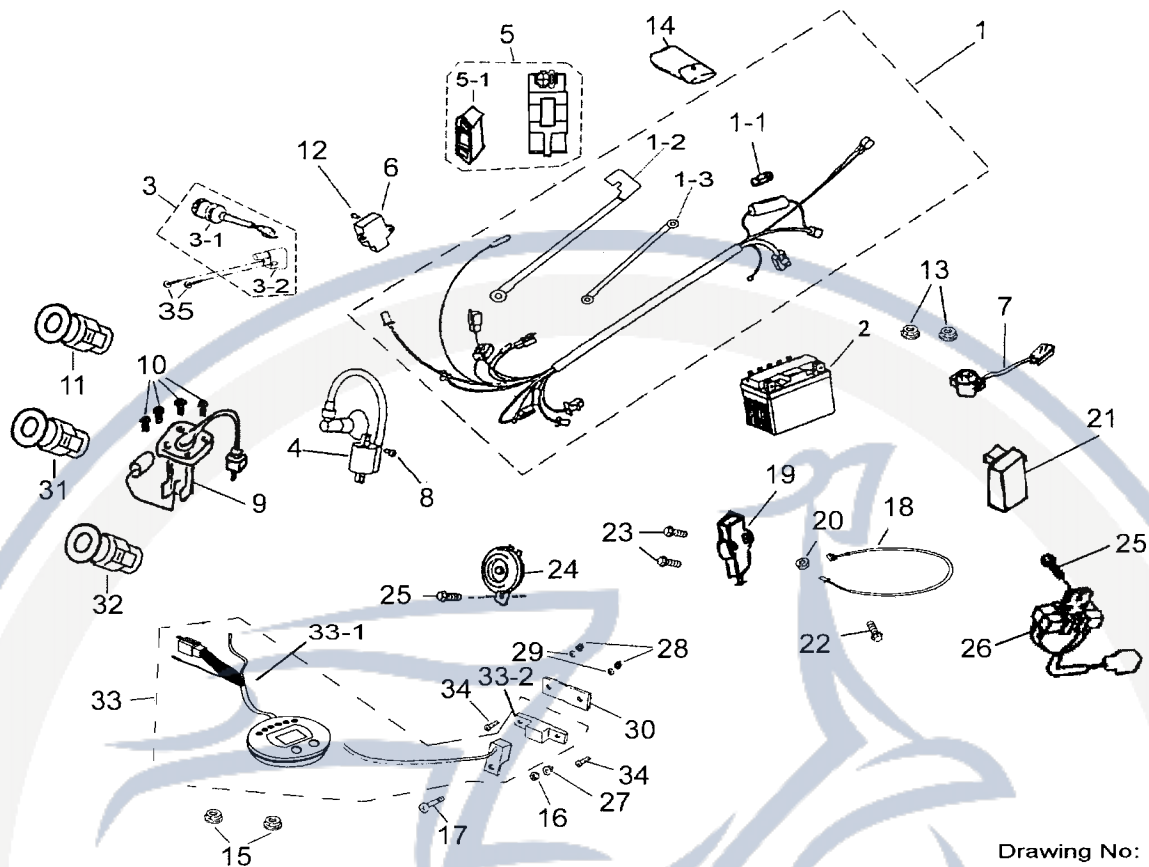


Drawing No:
032-001

| SALES MARK | P/N | DESCRIPTION | PART NO. | CUSTOMER NO. | CHINESE | Q'TY |
|------------|--------|--------------------------|---------------|--------------|---------|------|
| 販賣記號 | 件號 | 英文名稱 | 部品番號 | 客戶番號 | 中文名稱 | 用量 |
| | 32-1 | FAN | 19510-119-000 | | 風扇 | 1 |
| | 32-2 | GENERATOR ASS'Y | 31100-119-000 | | 發電機總成 | 1 |
| | 32-2-1 | GENERATOR FACE FLY WHEEL | 31110-119-000 | | 飛輪 | 1 |
| | 32-2-2 | STATOR COMP | 31120-119-000 | | 轉子線圈 | 1 |

| | | | | | |
|---------|------------------------------|----------------|--|-----------|---|
| 32-3 | PLAIN WASHER | 94101-1225023 | | 平墊圈 | 1 |
| 32-4 | HEX BOLT | 92000-05012-C | | 六角螺栓 | 2 |
| 32-5 | HEX FLANGE NUT | 94050-12000-C | | 六角緣面螺帽 | 1 |
| 32-6 | HEX FLANGE BOLT | 96000-06018-8C | | 六角緣面螺栓 | 4 |
| 32-7 | HEX FLANGE BOLT | 96000-06020-8C | | 六角緣面螺栓 | 2 |
| 32-8 | STARTING MOTOR ASS'Y | 31200-119-000 | | 起動馬達總成 | 1 |
| 32-8-1 | OIL RING | 91324-119-000 | | 油環 | 1 |
| 32-8-2 | HEX FLANGE NUT | 94050-06000-C | | 六角緣面螺帽 | 1 |
| 32-9 | STARTING CLUTCH ASS'Y | 28410-119-000 | | 起動離合器總成 | 1 |
| 32-9-1 | CLUTCH COVER COMP | 28120-119-000 | | 起動離合器外套 | 1 |
| 32-9-2 | FLANGE STARTING CLUTCH | 28125-119-000 | | 起動離合器凸緣 | 1 |
| 32-9-3 | CLUTCH ROLLER | 28411-119-000 | | 離合器滾珠 | 3 |
| 32-9-4 | CLUTCH SPRING | 28413-119-000 | | 離合器彈簧 | 3 |
| 32-9-5 | CLUTCH GUIDER | 28412-119-000 | | 離合器導筒 | 3 |
| 32-9-6 | HEX SOCKET BOLT | 91000-06012-C | | 六角承窩螺栓 | 3 |
| 32-9-7 | NEEDLE BEARING | 96200-283217 | | 滾珠軸承 | 1 |
| 32-10 | GEAR STARTER REDUCTION ASS'Y | 28422-119-000 | | 起動減速齒輪組 | 1 |
| 32-10-1 | GEAR STARTER REDUCTION | 28423-119-000 | | 起動減速齒輪 | 1 |
| 32-10-2 | SHAFT STARTER REDUCTION GEAR | 96300-119-000 | | 起動減速齒輪軸 | 1 |
| 32-11 | HEX FLANGE BOLT | 96000-06018-8C | | 六角緣面螺栓 | 2 |
| 32-12 | GEAR COMP STARTING CLUTCH | 28220-119-000 | | 電動起動離合器齒輪 | 1 |
| 32-13 | SEMICYCLE KEY | 90471-119-000 | | 半圓鍵 | 1 |
| 32-14 | PLAIN WASHER | 94101-2231025 | | 平墊圈 | 1 |
| 32-15 | NUT | 94071-22000-C | | 環型螺帽(左牙) | 1 |

D-33 ELECTRICAL PARTS 電裝品

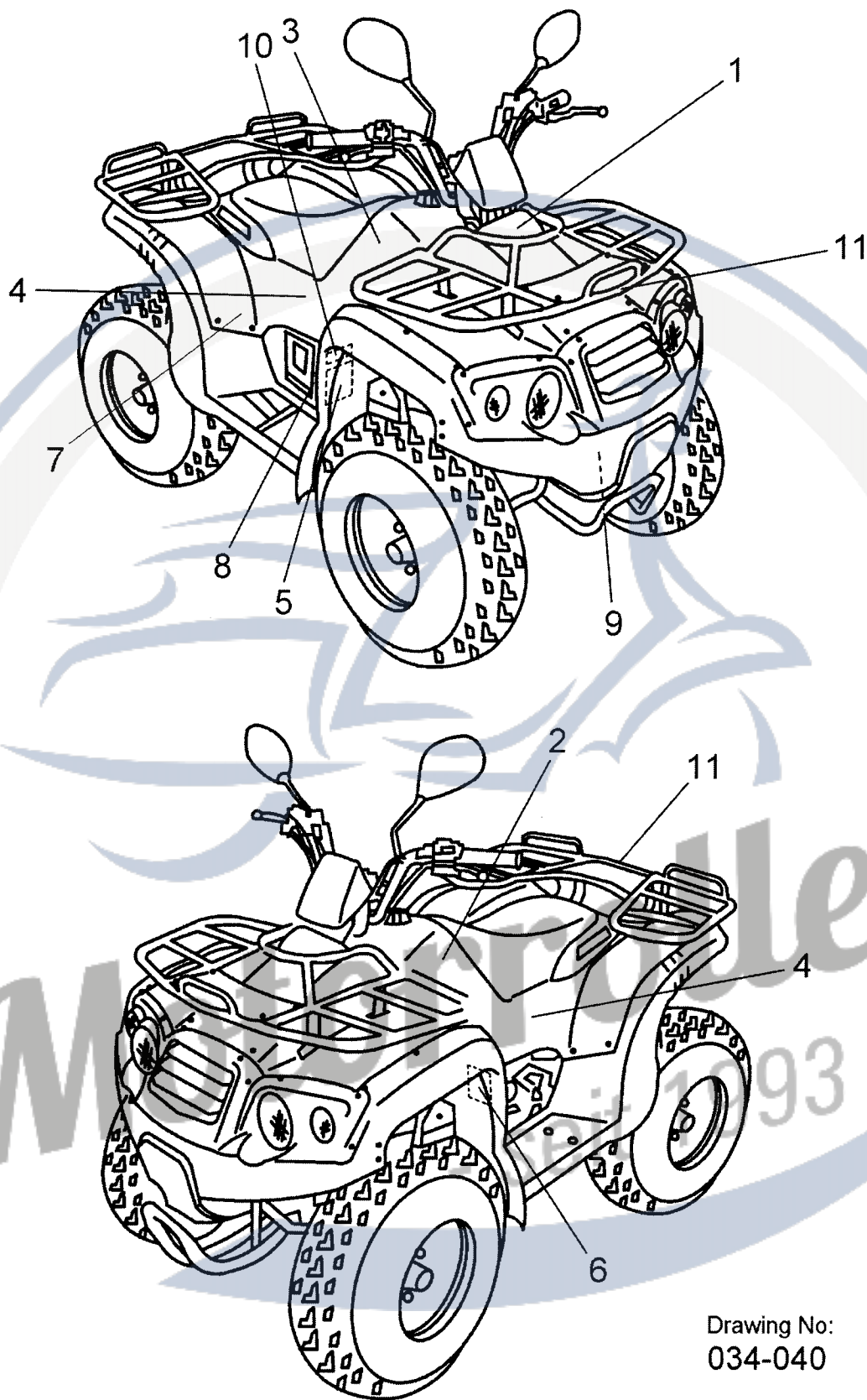


Drawing No:
033-009B

| SALES MARK | P/N | DESCRIPTION | PART NO. | CUSTOMER NO. | CHINESE | Q'TY |
|------------|--------|---------------------|-----------------|--------------|---------------|------|
| 販賣記號 | 件號 | 英文名稱 | 部品番號 | 客戶番號 | 中文名稱 | 用量 |
| | 33-1 | MAIN WIRE ASS'Y | 32100-182-000 | | 主配線 | 1 |
| | 33-1-1 | FUSE | 98200-156-000 | | 保險絲 | 1 |
| | 33-1-2 | BATTERY WIRE | 32101-159-000 | | 電瓶導線 | 1 |
| | 33-1-3 | GROUND WIRE | 32102-159-000 | | 接地線 | 1 |
| | 33-2 | BATTERY | 31500-156-001 | | 電瓶 | 1 |
| | 33-3 | MAIN SWITCH ASS'Y | 35100202-000 | | 主電源開關總成(含龍頭鎖) | 1 |
| | 33-3-1 | MAIN SWITCH | 35100-131-00F10 | | 主電源開關 | 1 |
| | 33-3-2 | STEERING LOCK | 35106201-000 | | 龍頭鎖 | 1 |
| | 33-4 | IGNITION COIL ASS'Y | 30510-119-000 | | 高壓線圈 | 1 |
| | 33-5 | C.D.I. UNIT ASS'Y | 30410-159-000 | | C.D.I.電子元件 | 1 |
| | 33-5-1 | FIX RUBBER | 30411-156-000 | | 固定膠套(C.D.I) | 1 |
| | 33-6 | RECTIFIER®ULATOR | 31600-119-000 | | 整流穩壓器 | 1 |

| | | | | | |
|---------|-------------------------------|-----------------|--|-----------|---|
| 33-7 | STARTER RELAY ASS'Y | 38501-119-000 | | 起動電譯 | 1 |
| 33-8 | HEX FLANGE BOLT | 96000-05020-C | | 六角緣面螺栓 | 1 |
| 33-9 | PETROL GAUGE ASS'Y | 37800-182-000 | | 汽油計量器 | 1 |
| 33-10 | PLAIN PHILLIPS BOLT | 93100-05016-K | | 十字扁圓頭螺栓 | 4 |
| 33-11 | SIGNAL BUZZER | 38303201-000 | | 方向燈警報器 | 1 |
| 33-12 | HEX FLANGE BOLT | 96000-06012-10K | | 六角緣面螺栓 | 1 |
| 33-13 | HEX FLANGE NUT | 94050-06000-K | | 六角緣面螺帽 | 2 |
| 33-14 | TOOL BAG | 50120-119-000 | | 工具包 | 1 |
| 33-15 | HEX FLANGE NUT | 94050-06000-C | | 六角緣面螺帽 | 2 |
| 33-16 | PLAIN WASHER | 94101-0514010-K | | 平墊圈 | 1 |
| 33-17 | PAN PHILLIPS BOLT | 93100-05012-K | | 十字扁圓頭螺栓 | 1 |
| 33-18 | TOUCH SWITCH | 34912-156-004 | | 觸動開關 | 1 |
| 33-19 | REVERSE INDICATOR SWITCH | 34913-156-000 | | 倒檔燈開關 | 1 |
| 33-20 | HEX NUT | 94001-03000-K | | 六角螺帽 | 1 |
| 33-21 | INDICATOR CONTROL | 34914201-000 | | 燈號控制器 | 1 |
| 33-22 | PAN PHILLIPS BOLT WITH WASHER | 93501-03010-K | | 十字圓頭螺栓附墊圈 | 1 |
| 33-23 | HEX SOCKET BOLT | 91000-05016-K | | 六角承窩螺栓 | 2 |
| 33-24 | HORN (E-MARK) | 38110-119-000 | | 喇叭 | 1 |
| 33-25 | HEX WASHER FACE BOLT | 96000-06012-10K | | 六角緣面螺栓 | 2 |
| 33-26 | RESISTOR | 38601-111-000 | | 電阻器 | 1 |
| 33-27 | NYLON INSERT LOCK NUT | 90350-05000-K | | 止鬆螺帽 | 1 |
| 33-28 | NYLON INSERT LOCK NUT | 90350-04000-K | | 止鬆螺帽 | 2 |
| 33-29 | PLAIN WASHER | 94101-0412010-K | | 平墊圈 | 2 |
| 33-30 | SPEEDOMETER FIXED PLATE | 37201-159-000 | | 速度錶小鐵片 | 1 |
| 33-31 | SIGNAL BUZZER | 38301-111-001 | | 方向燈斷續器 | 1 |
| 33-32 | SIGNAL WARNER | 38302-133-001 | | 方向燈警告器 | 1 |
| 33-33 | SPEEDOMETER ASS'Y | 37200-182-000 | | 速度錶總成 | 1 |
| 33-33-1 | HOLDER OF SPEEDOMETER | 37202-182-000 | | 速度錶座 | 1 |
| 33-33-2 | MAGNET | 37203-159-000 | | 感應磁石 | 1 |
| 33-34 | PAN PHILLIPS BOLT | 93100-04016-K | | 十字扁圓頭螺栓 | 2 |
| 33-35 | PAN PHILLIPS BOLT | 93100-05012-K | | 十字扁圓頭螺栓 | 2 |

D-34 DECALS 貼紙

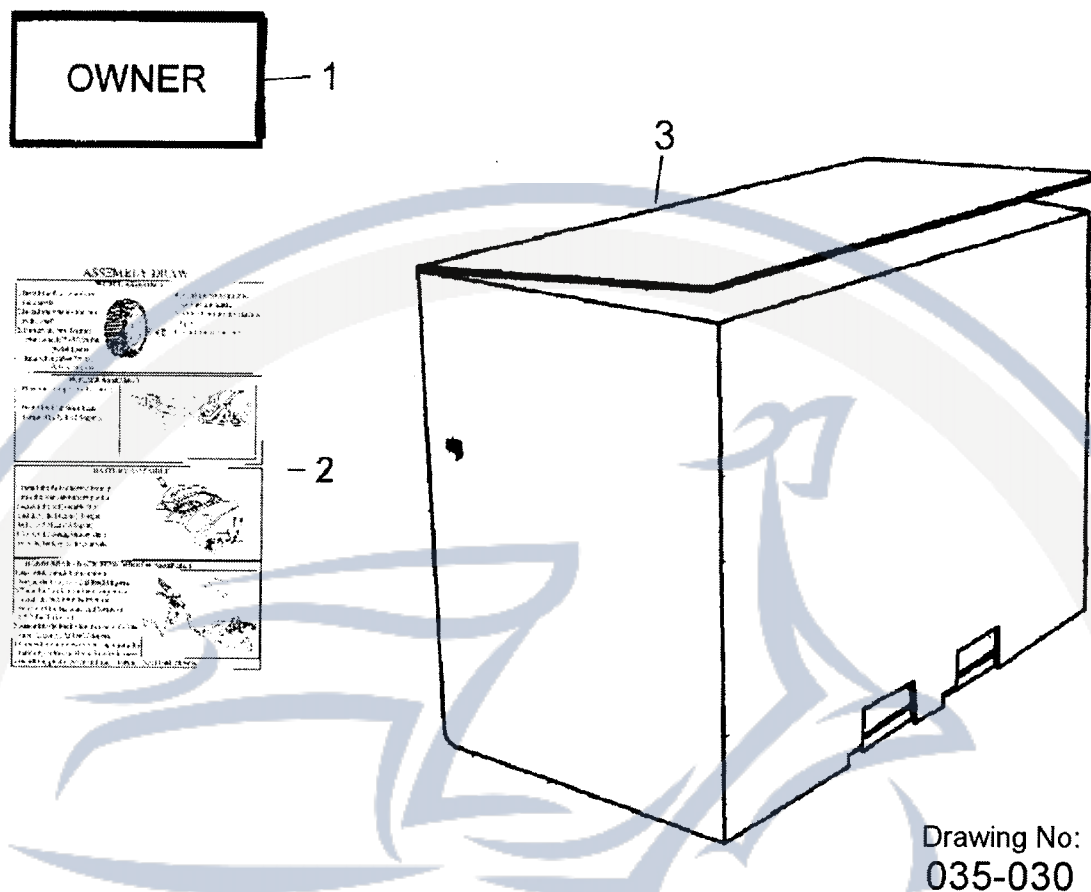


Drawing No:
034-040

| SALES MARK | P/N | DESCRIPTION | PART NO. | CUSTOMER NO. | CHINESE | Q'TY |
|------------|-------|----------------------------|---------------|--------------|----------------|------|
| 販賣記號 | 件號 | 英文名稱 | 部品番號 | 客戶番號 | 中文名稱 | 用量 |
| | 34-1 | DECAL -(AEON) | 87711-162-000 | | 嘜頭貼紙(AEON) | 1 |
| | 34-2 | DECAL - FUEL TANK (L) | 87721191-00A | | 油箱左側貼紙 | 1 |
| | 34-2 | DECAL - FUEL TANK (L) | 87721191-000 | | 油箱左側貼紙 | 1 |
| | 34-3 | DECAL-FUEL TANK (R) | 87720191-00A | | 油箱右側貼紙 | 1 |
| | 34-3 | DECAL-FUEL TANK (R) | 87720191-000 | | 油箱右側貼紙 | 1 |
| | 34-4 | DECAL - OVERLAND 180 | 87716191-000 | | OVERLAND-180貼紙 | 2 |
| | 34-5 | DECAL - WARNING (Y-16) | 87751-159-000 | | 禁止標示貼紙 | 1 |
| | 34-6 | DECAL - WARNING | 87752-159-000 | | 警告說明貼紙 | 1 |
| | 34-7 | DECAL - WARNING CHAIN | 87758-156-001 | | 鏈條警告貼紙 | 1 |
| | 34-8 | DECAL-TRANSMISSION | 87759-156-000 | | 排檔桿貼紙 | 1 |
| | 34-9 | DECAL-VIN CODE | 87771-074029 | | 車架號碼貼紙 | 1 |
| | 34-10 | DECAL-REVERSE WARNING | 87754-156-000 | | 倒退警告貼紙 | 1 |
| | 34-11 | REAR CARRIER WARNING DECAL | 87769-131-000 | | 貨架警告貼紙 | 2 |

Motorroller.de
- seit 1993 -

D-35 STANDARD ACCESSORY 隨車附件



| SALES MARK 販賣記號 | P/N 件號 | DESCRIPTION 英文名稱 | PART NO. 部品番號 | CUSTOMER NO. 客戶番號 | CHINESE 中文名稱 | Q'TY 用量 |
|--------------------|-----------|---------------------|------------------|----------------------|-----------------|------------|
| | 35-1 | OWNERS MANUAL | OWNER-159-3 | | 使用手冊 | 1 |
| | 35-2 | ASSEMBLY DRAW | ASS-204 | | 組裝說明書 | 1 |
| | 35-3 | PACKING | 89005203-000 | | 紙箱 | 1 |