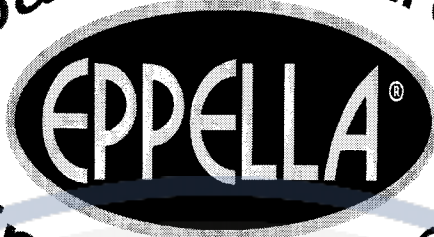


Spaß und Sparen



Eppella fahren

Teilebuch

Quad 170 Utility

Motorroller.de
- seit 1993 -

Friedrich Epple GmbH
Im Erlengrund 1
64678 Lindenfels, OT Eulsbach
Tel.: 06255 30030
E-Mail: info@motorroller.de
Web: www.motorroller.de



Motorroller.de
- seit 1993 -

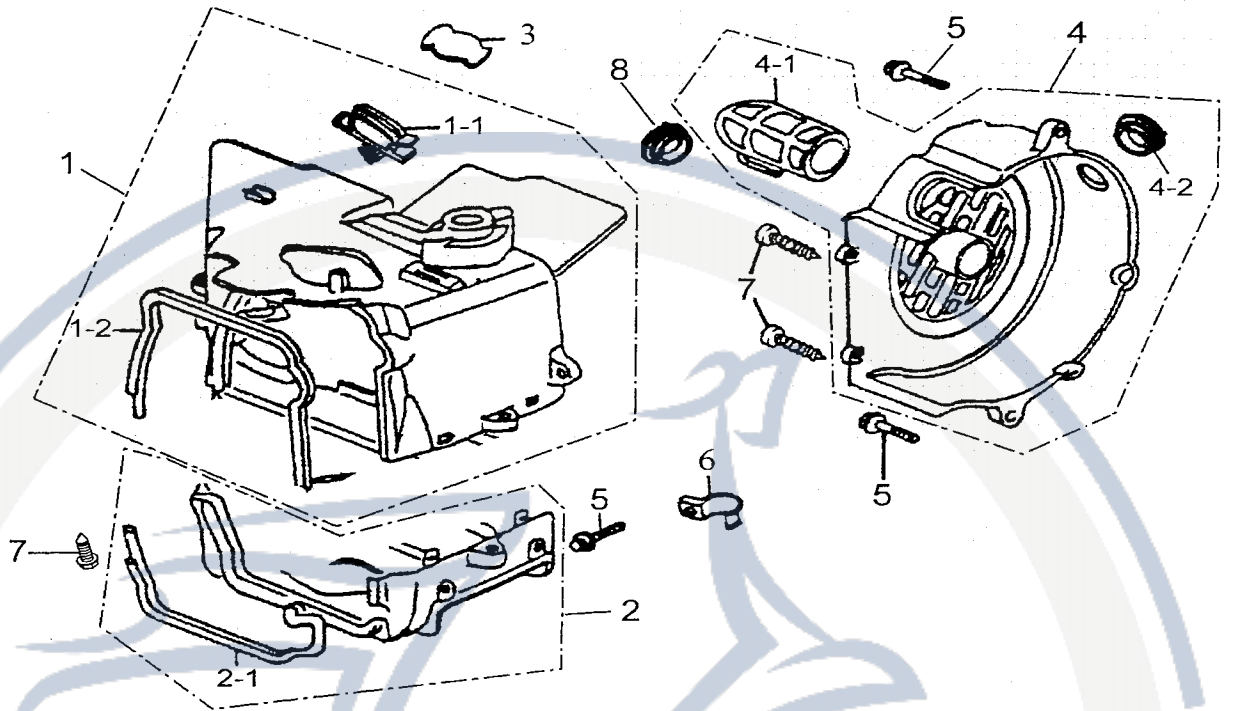
CONTENTS 目錄

FAN COVER、SHROUD	風扇蓋、引擎罩蓋	1
CYLINDER HEAD COVER	汽缸頭蓋	2
CAMSHAFT、VALVE、CYLINDER HEAD	凸輪軸、閥門 汽缸頭	3
CAM CHAIN、TENSIONER	內鏈條、拉力桿	5
CYLINDER	汽缸	6
RIGHT CRANKCASE COVER	右曲軸箱蓋	7
OIL PUMP	機油泵	9
LEFT CRANKCASE COVER	左曲軸箱蓋	1
DRIVE FACE	驅動盤	1
DRIVEN FACE	傳動盤	1
TRANSMISSION	傳動系	1
CRANKCASE	曲軸箱	1
CRANK SHAFT、PISTON	曲軸、活塞	2
AIR CLEANER	空氣濾清器	2
EXHANST MUFFLER、CARBURETOR	排氣管、化油器	2
FRAME BODY	車架	2
BUMPER、FRONT AND REAR RACK	前、後保險桿，前、後貨架	2
SWING ARM，FOOTREST	前避震臂、腳踏板	2
FENDER	擋泥板	3
SEAT	座墊	3
FUEL TANK	汽油箱	3
SUSPENSION	避震器	3
FRONT WHEEL	前輪組	3
REAR WHEEL	後輪組	3
FRONT BRAKE SYSTEM	前煞車組	3
REAR BRAKE SYSTEM	後煞車組	3
HANDLE STEERING COMP	轉向手柄	4
REAR WHEEL AXLE	後輪軸	4
CHAIN	鏈	4
STEERING	轉向組	4
HEAD LIGHT, TAIL LIGHT	前燈、後燈	4
GENERATOR, START MOTOR	發電機總成、起動馬達	4
ELECTRICAL PARTS	電裝品	4

DECALS	貼紙5
OPTION PARTS	選配零件5
STANDARD ACCESSORY	隨車附件5
PAPERS	文件5
	委外加工5

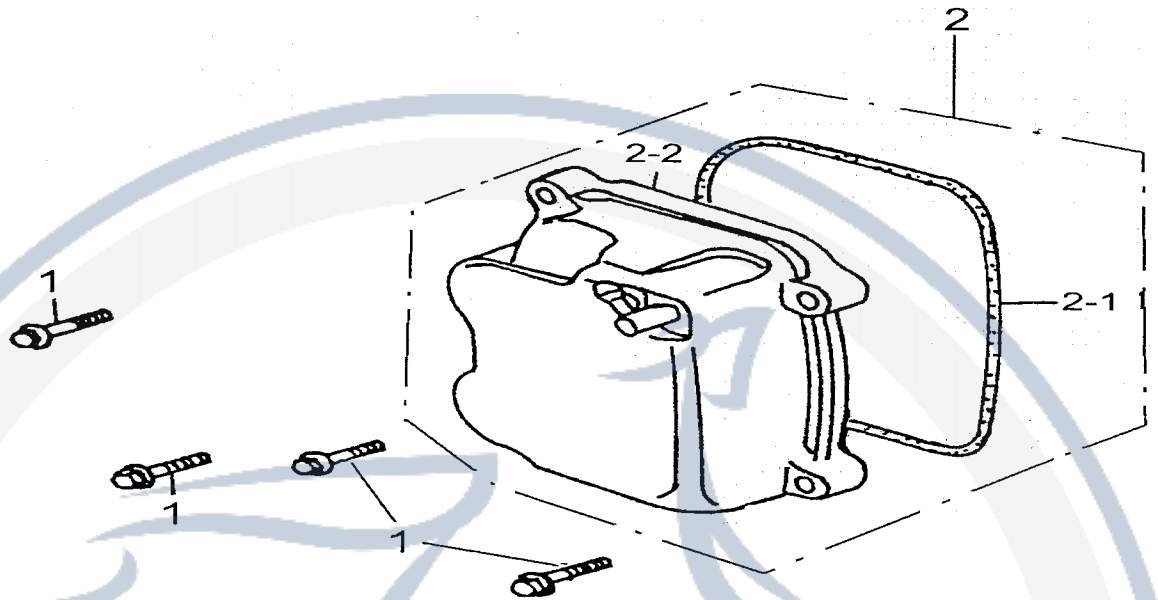


D-1 FAN COVER,SHROUD 風扇蓋,引擎罩蓋



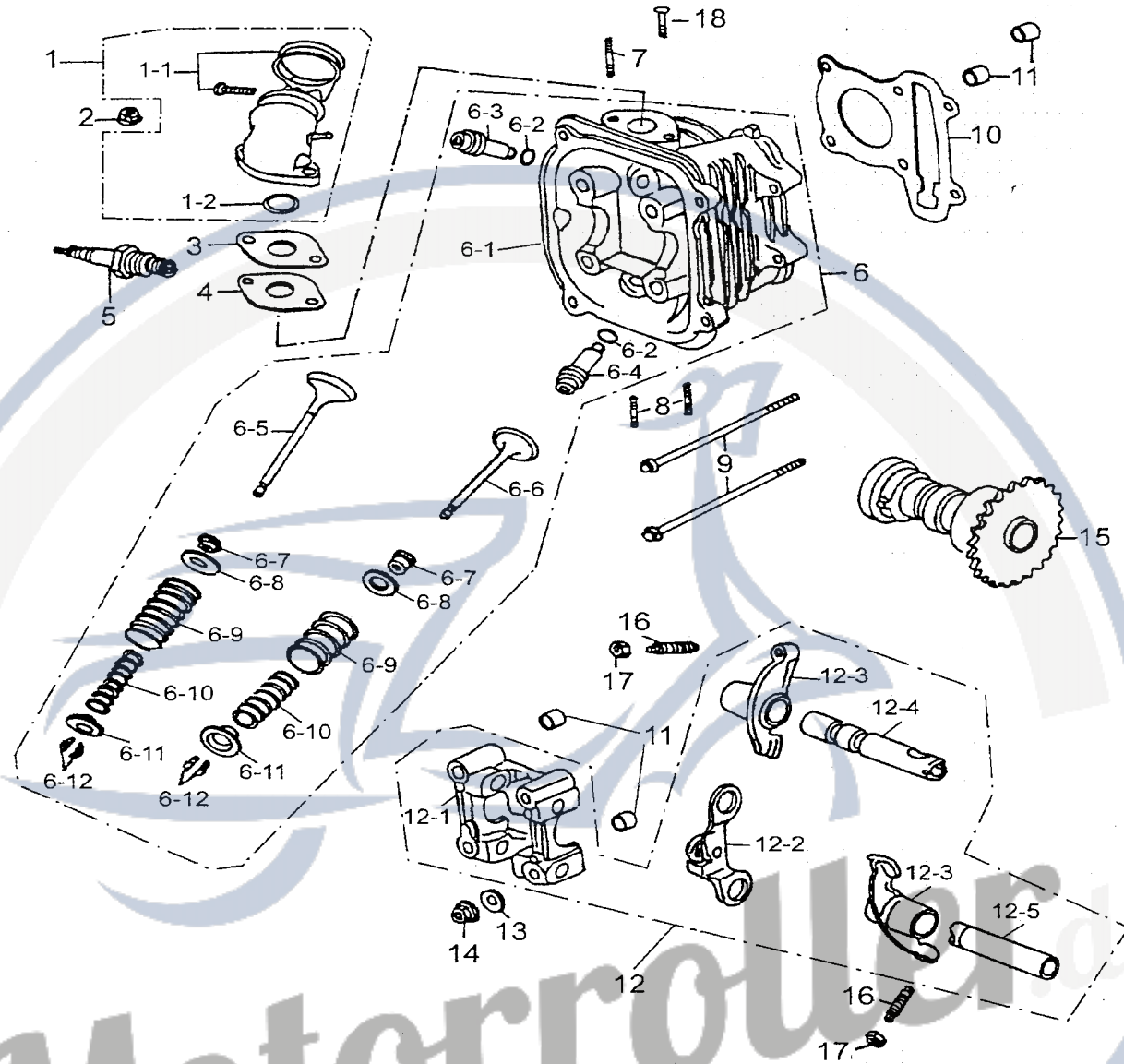
SALES MARK	P/N	DESCRIPTION	PART NO.		Q'TY	REMAR
販賣記號	件號	英文名稱	部品番號	客戶番號	用量	備註
	1-1	SHROUD - UPPER	19623-119-000		1	
	1-1-1	BREATHER TUBE CLAMPER	11384-119-000		1	
	1-1-2	SHROUD SEAL UPPER	19635-119-000		1	
	1-2	SHROUD -LOWER	19621-119-000		1	
	1-2-1	SHROUD SEAL-LOWER	19625-119-000		1	
	1-3	RUBBER BUNG B	19633-119-000		1	
	1-4	FAN COVER ASS'Y	19610-119-000		1	
	1-4-1	CARBURETOR COOLING DUCT	19615-119-000		1	
	1-4-2	RUBBER BUNG	17529-119-000		1	
	1-5	HEX FLANGE	96000-06025-8C		3	M6x25
	1-6	CLAMPER CARB DRAIN TUBE	11353-119-000		1	
	1-7	CROSS TAPPING SCREW	93904-05016-K		4	5x16
	1-8	RUBBER CAP	19611-156-000		1	

D-2 CYLINDER HEAD COVER 汽缸頭蓋



ALLES MARK	P/N	DESCRIPTION	PART NO.	Q'TY	REMAI
圖號	件號	英文名稱	部品番號	用量	備註
	2-1	HEX FLANGE BOLT	96000-06025-8C	4	M6x25
	2-2	CYLINDER HEAD COVER ASS'Y	12310-158-000	1	
	2-2-1	CYLINDER HEAD COVER GASKET	12391-119-000	1	
	2-2-2	CYLINDER HEAD COVER	12309-158-000	1	

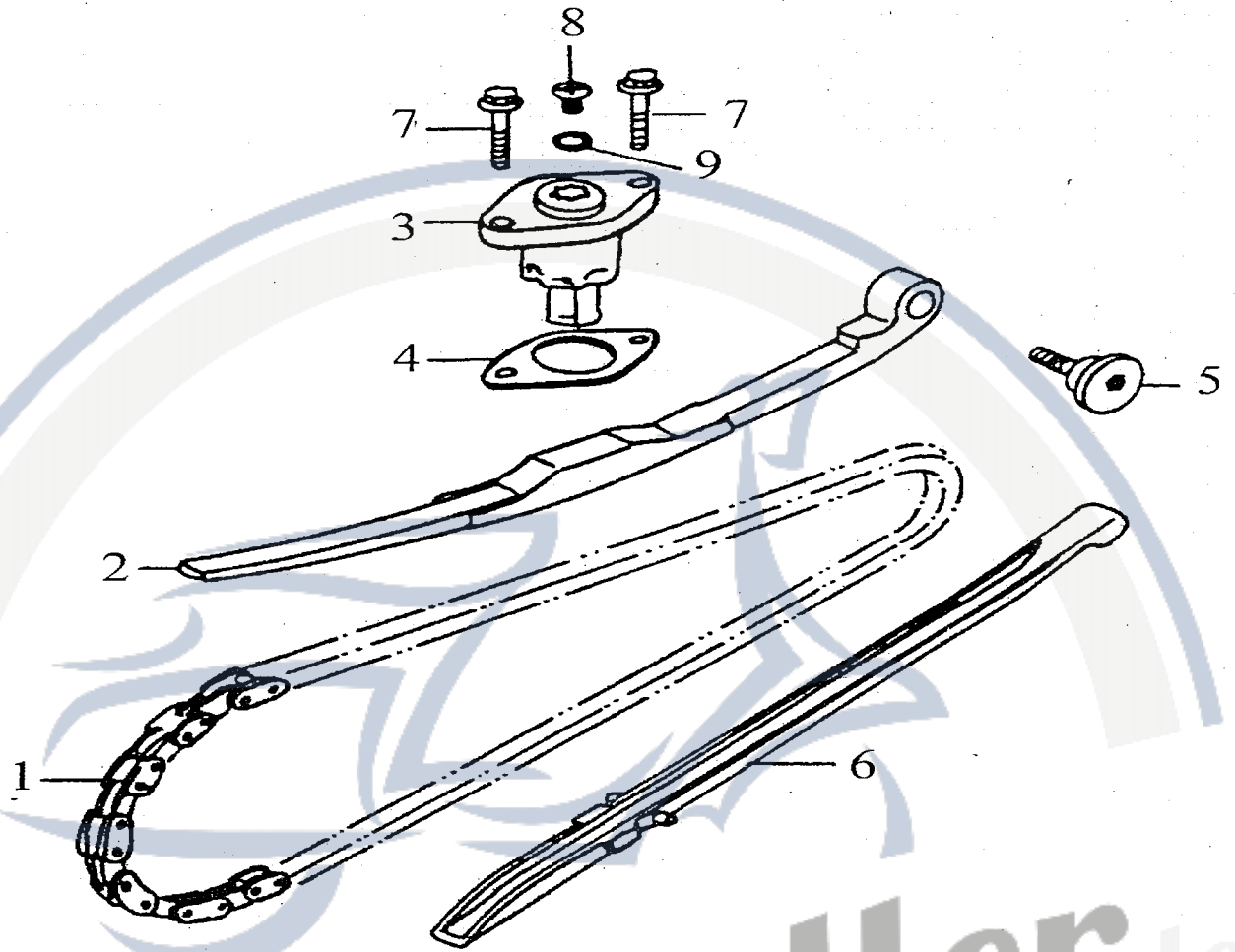
D-3 CAMSHAFT, VALVE, CYLINDER HEAD 凸輪軸, 閥門 汽缸頭



SALES MARK	P/N	DESCRIPTION	PART NO.	Q'TY	REMARK
販賣記號	件號	英文名稱	部品番號	用量	備註
	3-1	INAKE MAINFOLD	17100-119-000	1	
	3-1-1	BAND INSULATOR	14111-119-000	1	
	3-1-2	OIL-RING	91327-119-000	1	9.5×1.6
	3-2	HEX FLANGE NUT	94050-06000-C	2	M6
	3-3	CARBURETOR INSULATOR	16213-119-000	1	
	3-4	CARBURETOR INSULATOR GASKET	16229-119-000	1	
	3-5	SPARK PLUG	98076-119-00A	1	CR7HSA
	3-6	CYLINDER HEAD ASS'Y	12200-158-000	1	
	3-6-1	CYLINDER HEAD	12201-158-000	1	
	3-6-2	OIL-RING	91309-119-000	2	27×2

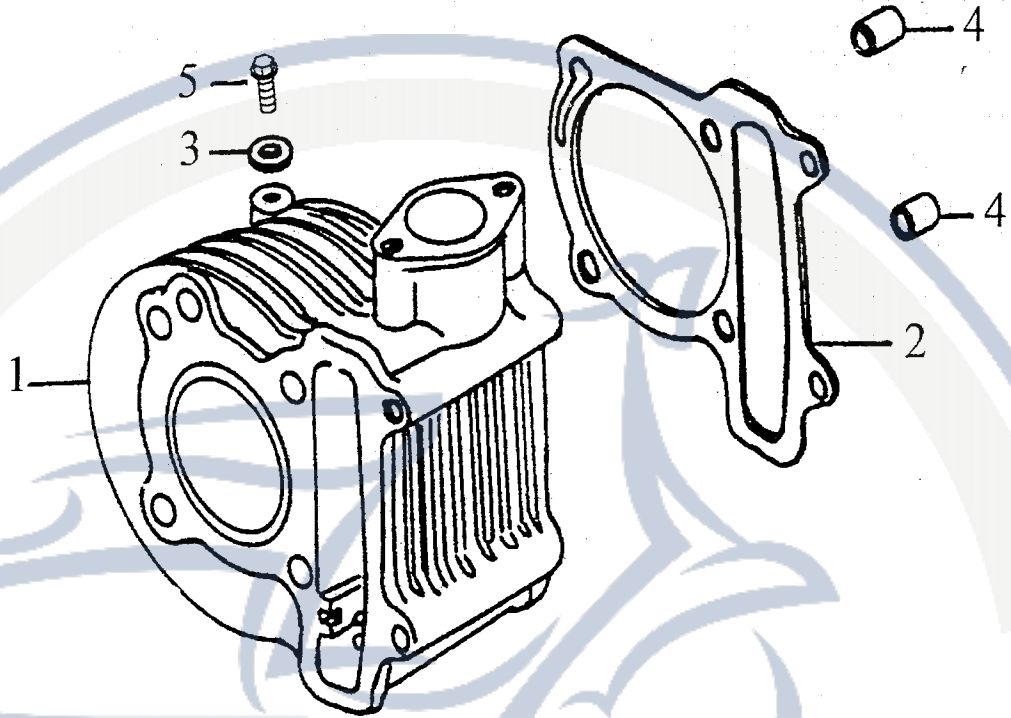
3-6-3	IN.GUIDE VALVE	12204-122-000	1	
3-6-4	EX.GUIDE VALVE	12206-122-000	1	
3-6-5	EX. VALVE	14721-122-000	1	
3-6-6	IN. VALVE	14711-122-000	1	
3-6-7	VALVE STEM SEAL	12209-119-000	2	
3-6-8	SEAT VALVE SPRING OUTER	14775-119-000	2	
3-6-9	VALVE OUTER SPRING	14751-119-000	2	
3-6-10	VALVE INNER SPRING	14761-119-000	2	
3-6-11	VALVE SPRING RETAINER	14771-119-000	2	
3-6-12	COTTER VALVE	14781-119-000	4	
3-7	STUD BOLT	91001-06062-C	2	M6x62
3-8	STUD BOLT	91001-08032-C	2	M8x32
3-9	HEX FLANGE BOLT	96000-06100-8C	2	M6x100
3-10	CYLINDER HEAD GASKET	12251-158-000	1	
3-11	DOWEL PIN	94301-10140	4	10x14
3-12	CAM SHAFT HOLDER ASS'Y	12210-158-000	1	
3-12-1	CAMSHAFT HOLDER	12211-158-000	1	
3-12-2	PLATE COMP STOPPER	14456-119-000	1	
3-12-3	ARM VALVE ROCKER	14431-119-000	2	
3-12-4	SHAFT COMP IN ROCKER ARM	14452-158-000	1	
3-12-5	SHAFT EX ROCKER ARM	14453-158-000	1	
3-13	COPPER PLAIN WASHER	94101-0818023-U	4	8x18x2.3
3-14	HEX FLANGE NUT	94050-08000-C	4	M8
3-15	CAMSHAFT COMP	14400-122-000	1	
3-16	SCREW TAPPEL ADJUSTING	90012-119-000	2	
3-17	TAPPET ADJUSTING	90206-119-000	2	

D-4 CAM CHAIN,TENSIONER 內鏈條,拉力桿



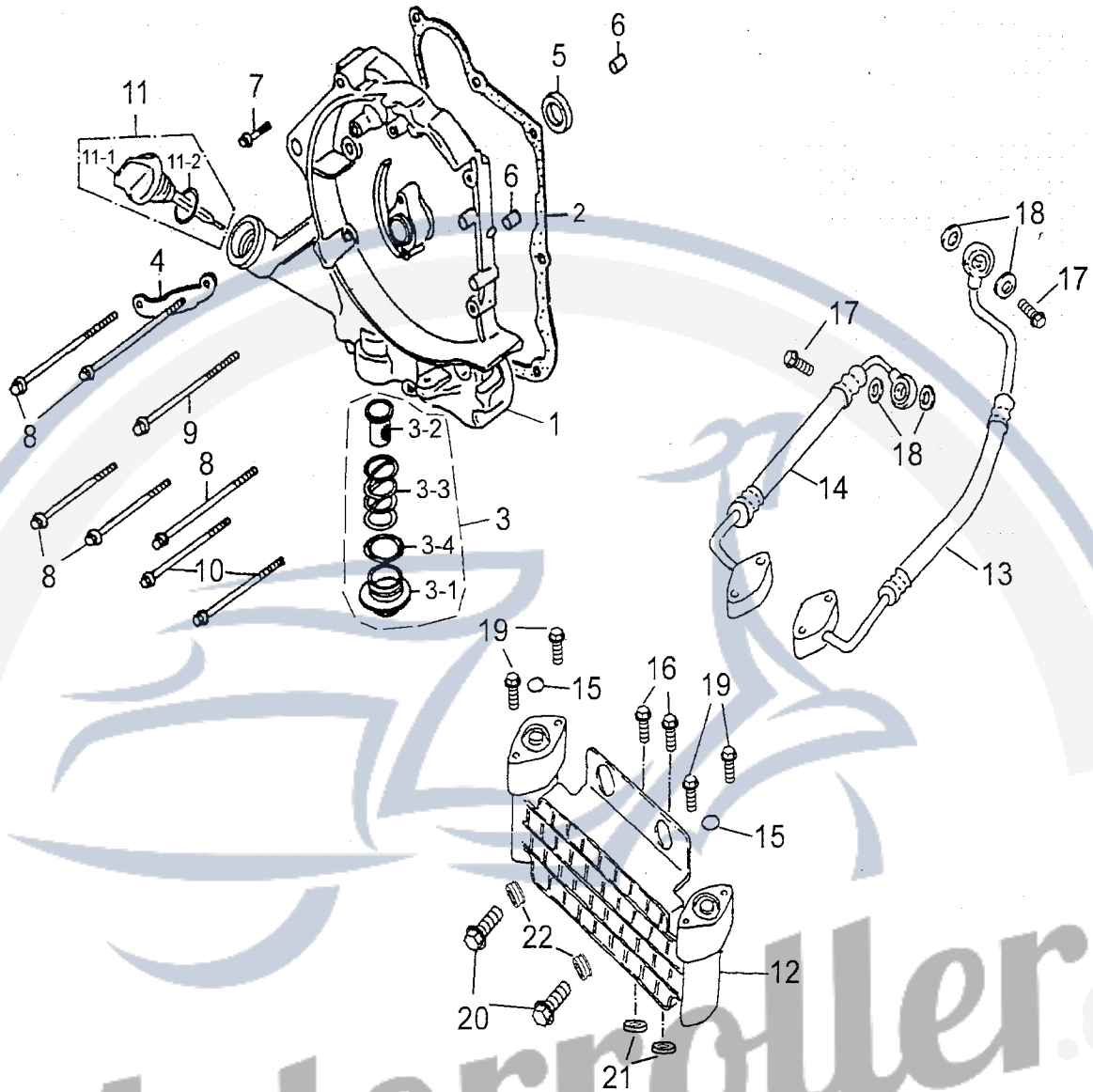
SALES MARK	P/N	DESCRIPTION	PART NO.	Q'TY	REMARK
販賣記號	件號	英文名稱	部品番號	用量	備註
	4-1	CHAIN CAM	14401-119-000	1	
	4-2	TENSIONER CAM CHAIN	14550-119-000	1	
	4-3	LIFTER TENSIONER LIFTER	14521-119-000	1	
	4-4	GASKET TENSIONER LIFTER	14523-119-000	1	
	4-5	PIVOT CAM CHAIN TENSIONER	14535-119-000	1	M6×22
	4-6	GUIDE COMP CAM CHAIN	14500-119-000	1	
	4-7	HEX FLANGE BOLT	96000-06022-814C	2	M6×22
	4-8	SCREW,PAN	93000-06006-K	1	M6×6
	4-9	OIL-RING	91309-119-000	1	9.5×1.5

D-5 CYLINDER 汽缸



SALES MARK	P/N	DESCRIPTION	PART NO.	Q'TY	REMARK
販賣記號	件號	英文名稱	部品番號	用量	備註
	5-1	CYLINDER	12101-158-001	1	
	5-2	CYLINDER GASKET	12191-158-000	1	
	5-3	COPPER PLAIN WASHER	94101-0612010-U	1	6.5×12×1
	5-4	DOWEL PIN	94301-10140	2	10×14
	5-5	HEX FLANGE BOLT	96000-06012-10C	1	M6×12

D-6 RIGHT CRANKCASE COVER 右曲軸箱蓋

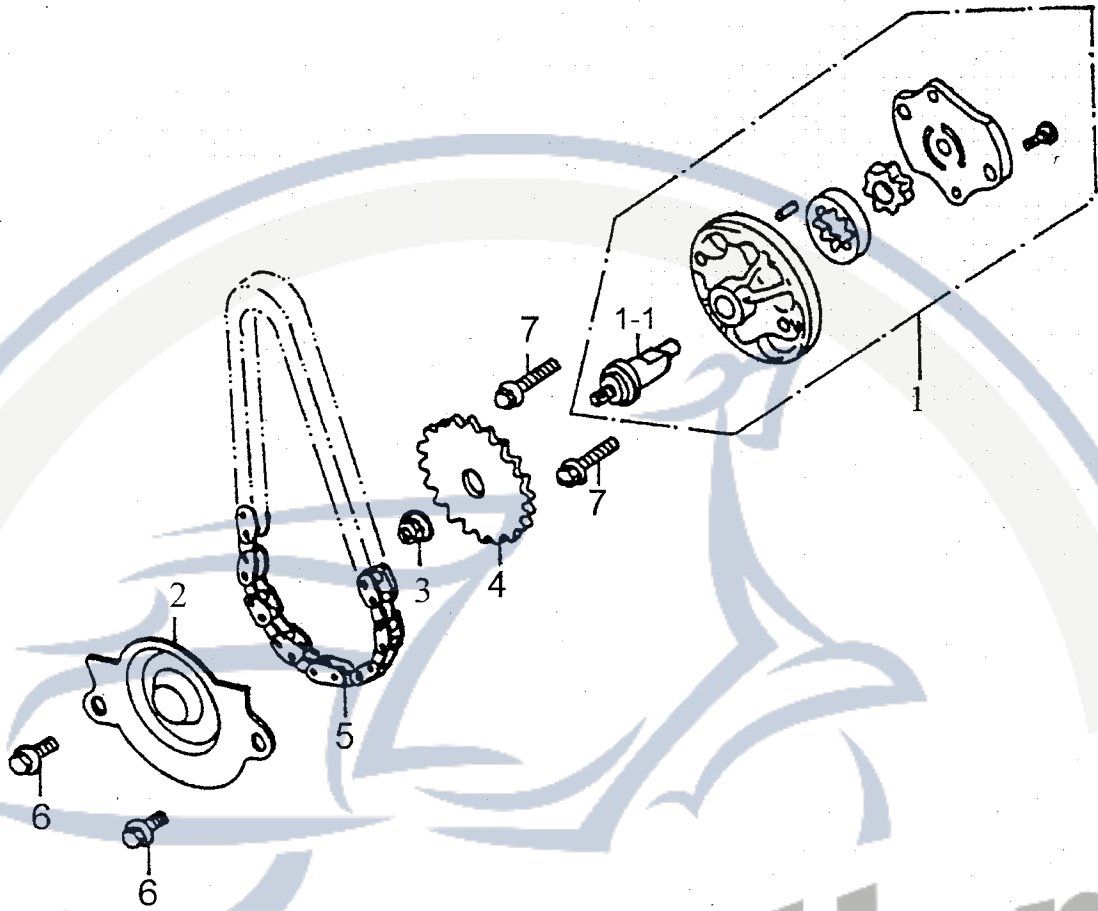


SALES MARK	P/N	DESCRIPTION	PART NO.		Q'TY	REMARK
買賣記號	件號	英文名稱	部品番號	客戶番號	用量	備註
	6-1	RIGHT CRANKCASE OVER	11330-156-000		1	
	6-2	GASKET R. CRANKCASE COVER	11393-156-000		1	
	6-3	CAP TAPPET ADJUSTING HOLE ASS'Y	12361-119-000		1	
	6-3-1	CAP TAPPET	12360-119-00		1	
	6-3-2	SCREEN OIL FILTER	15421-119-000		1	
	6-3-3	SPRING OIL FILTER SPRING	15426-119-000		1	
	6-3-4	OIL RING	91330-119-000		1	30.8mm
	6-4	CLAMPER A.C.GENERATOR CORD	32961-119-000		1	
	6-5	OIL SEAL	96500-19305		1	19.8×30×5
	6-6	DOWEL PIN	94301-08140		2	8×14
	6-7	HEX FLANGE BOLT	96000-06028-8C		1	M6×28

6-8	HEX FLANGE BOLT	96000-06095-8C	5	M6x95
6-9	HEX FLANGE BOLT	96000-06100-8C	1	M6x100
6-10	HEX FLANGE BOLT	96000-06110-8C	2	M6x110
6-11	GAUGE ASS'Y OIL LEVEL	1565A-119-000	1	
6-11-1	GAUGE OIL LEVEL	15650-119-000	1	
6-11-2	OIL RING	91318-119-000	1	18x3
6-12	RADIATOR	15210-158-000	1	
6-13	LIFE HOSE OUTLET	15230-158-000	1	
6-14	RIGHT HOSE INLET	15220-158-000	1	
6-15	O-RING	91312-111-000	2	13.8x2.5
6-16	HEX FLANGE BOLT	96000-06012-10K	2	M6x12
6-17	OIL TUBE FIXED BOLT	45456-156-000-G	2	M12x1.25
6-18	PLAIN WASHER	94101-1221320-L	4	12x21.3x2
6-19	HEX FLANGE BOLT	96000-06025-K	4	M6x25
6-20	HEX FLANGE BOLT	96000-08012-K	2	M8*12
6-21	SHAKE-PROOF RUBBER WASHER	64320-156-000	2	
6-22	SHAKE-PROOF RUBBER RING	64321-156-000	2	

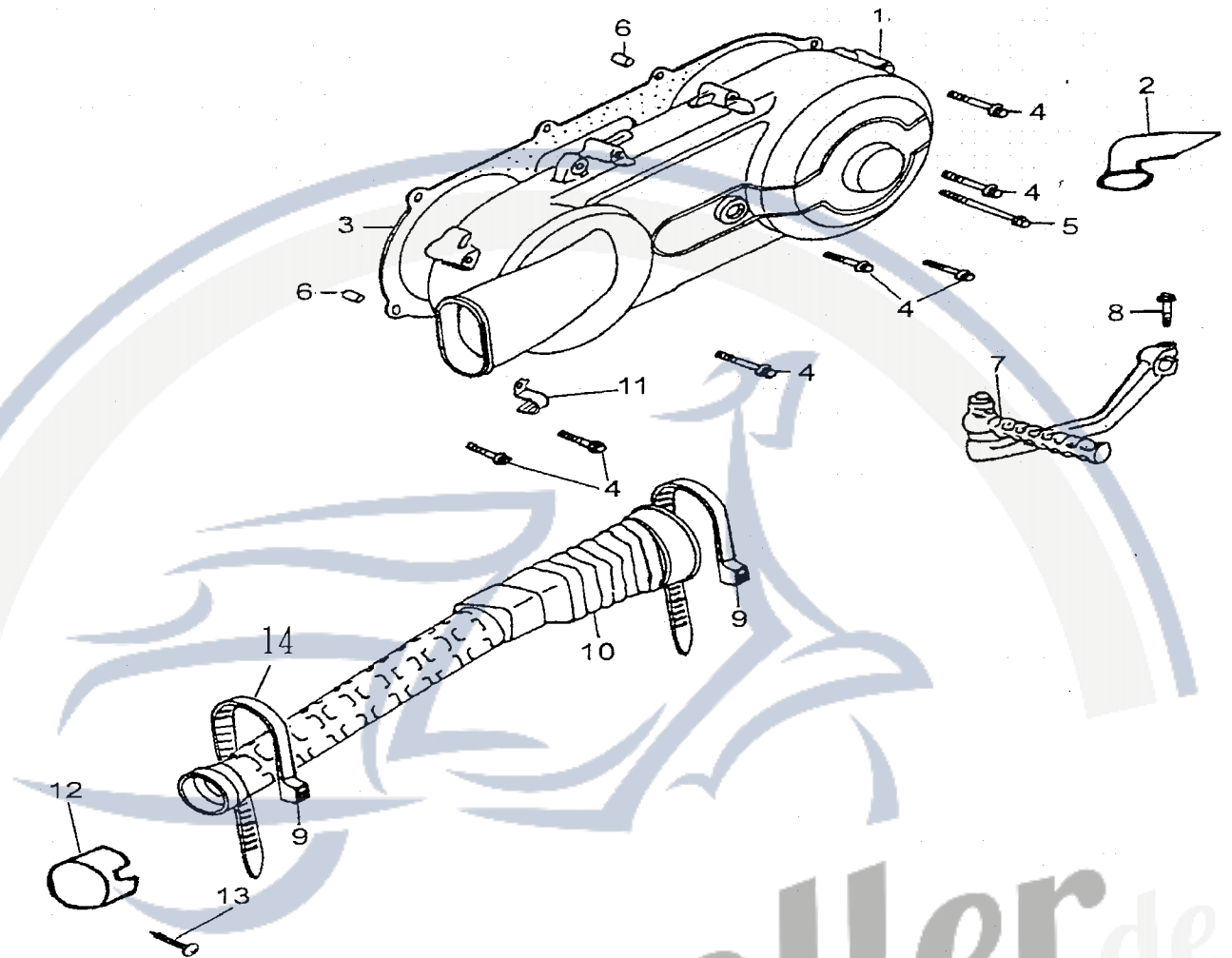
Motorroller.de
- seit 1993 -

D-7 OIL PUMP 機油泵



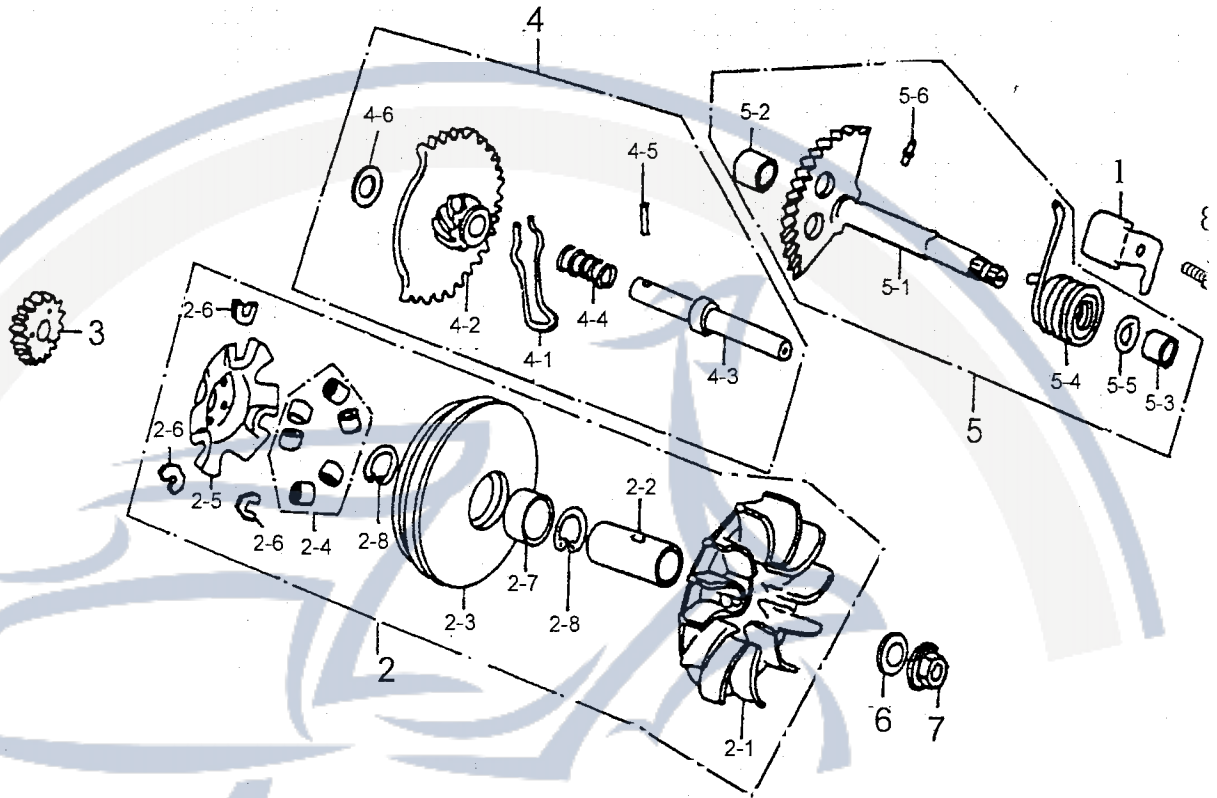
ALLES MARK	P/N	DESCRIPTION	PART NO.		Q'TY	REMAI
實記號	件號	英文名稱	部品番號	客戶番號	用量	備註
	7-1	OIL PUMP	15100-158-000		1	
	7-1-1	OIL PUMP PROIMARY AXLE	15131-158-000		1	
	7-2	SEPARATOR A OIL	15711-119-000		1	
	7-3	HEX FLANGE NUT	94050-06000-C		1	M6
	7-4	OIL PUMP DRIVE GEAR	15150-119-000		1	
	7-5	CHAIN OIL PUMP	15141-119-000		1	
	7-6	HEX FLANGE BOLT	96000-06012-8C		2	M6×12
	7-7	PAN SOCKET BOLT	93902-06025-B		2	M6×25

D-8 LEFT CRANKCASE COVER 左曲軸箱蓋



ALLES MARK	P/N	DESCRIPTION	PART NO.	Q'TY	REMA
零件號	件號	英文名稱	部品番號	用量	備註
	8-1	COVER L	11341-156-000	1	
	8-2	CLAMPER THROTTLE CABLE	11211-112-000	1	
	8-3	GASKET L COVER	11359-119-000	1	
	8-4	HEX FLANGE BOLT	96000-06040-8C	7	M6x40
	8-5	HEX FLANGE BOLT	96000-06100-8C	1	M6x100
	8-6	DOWEL PIN	94301-08140	2	8x14
	8-7	ARM ASS'Y KICK STARTER	28300-156-000	1	
	8-8	HEX FLANGE BOLT	96000-06025-K	1	M6x25
	8-9	STRAP	90669-119-001	1	D61
	8-10	DUCT L. CRANKCASE COVER	11345-119-000	1	
	8-11	BREATHER HOSE CLIP	11351-119-000	1	
	8-12	DUST PROOF RUBBER	11349-156-000	1	
	8-13	TAPPING SCREW	93903-04016-K	1	M4x16

D-9 DRIVE FACE 驅動盤

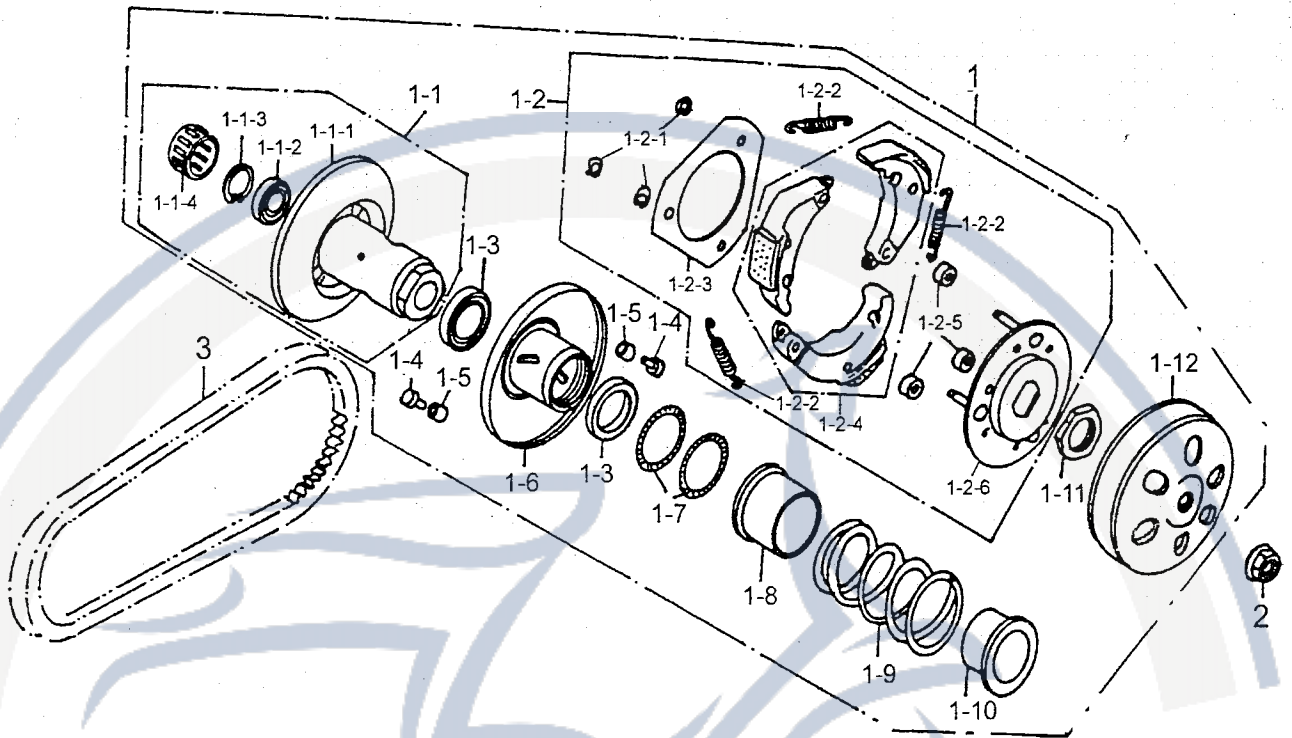


圖號	P/N	DESCRIPTION	PART NO.	客戶番號	Q'TY	REMARK
圖號	件號	英文名稱	部品番號	客戶番號	用量	備註
	9-1	PLATE KICK RETURN STOPPER	11207-119-000		1	
	9-2	FACE ASS'Y MOVABLE DRIVE	22103-160-000		1	
	9-2-1	FACE DRIVE	22102-156-000		1	
	9-2-2	BOSS DRIVE FACE	96401-172451		1	17×24×51.5
	9-2-3	PRIMARY SLIDING SLOT WHEEL	22110-156-000		1	
	9-2-4	ROLLER COMP WEIGHT	22121-158-000		6	17 g
	9-2-5	PLATE RAMP	22131-158-000		1	φ17孔
	9-2-6	SIDE PIECE	22132-156-000		3	
	9-2-7	BUSH	96401-242830		1	24×28×30
	9-2-8	INTERNAL CIR CLIP	94512-2800R		2	RTW-28
	9-3	GEAR KICK DRIVE	28211-119-000		1	20T
	9-4	STARTER IDLE GEAR ASS'Y	28231-119-000		1	
	9-4-1	SPRING STARTER GEAR FRICTION	28223-119-000		1	

9-4-2	GEAR COMP STARTER IDLE	28230-119-000	1	13T/49T
9-4-3	SHAFT STARTER IDLE	28241-119-000	1	
9-4-4	SPRING STARTER IDLE	28242-119-000	1	
9-4-5	SPECIAL PIN	28282-119-000	1	4.5mm
9-4-6	PLAIN WASHER	94101-1225023	1	12x25x2.3
9-5	STARTER SPINDLE ASS'Y	28251-119-000	1	
9-5-1	STARTER SPINDLE COMP	28250-119-000	1	
9-5-2	BUSH	96401-121612	1	12x16x12
9-5-3	STARTER SPINDLE BUSH	96401-141816	1	14x18x16
9-5-4	STARTER SPRING	28281-119-000	1	
9-5-5	PLAIN WASHER	94101-1422012-C	1	14x22x1.2
9-5-6	ROLLER	96220-30085	1	3x8.5
9-6	PLAIN WASHER	94101-1225023	1	12x25x2.3
9-7	HEX FLANGE NUT	94050-12000-C	1	M12
9-8	HEX FLANGE BOLT	96000-06012-8C	1	M6x12

Motorroller.de
- seit 1993 -

D-10 DRIVEN FACE 傳動盤

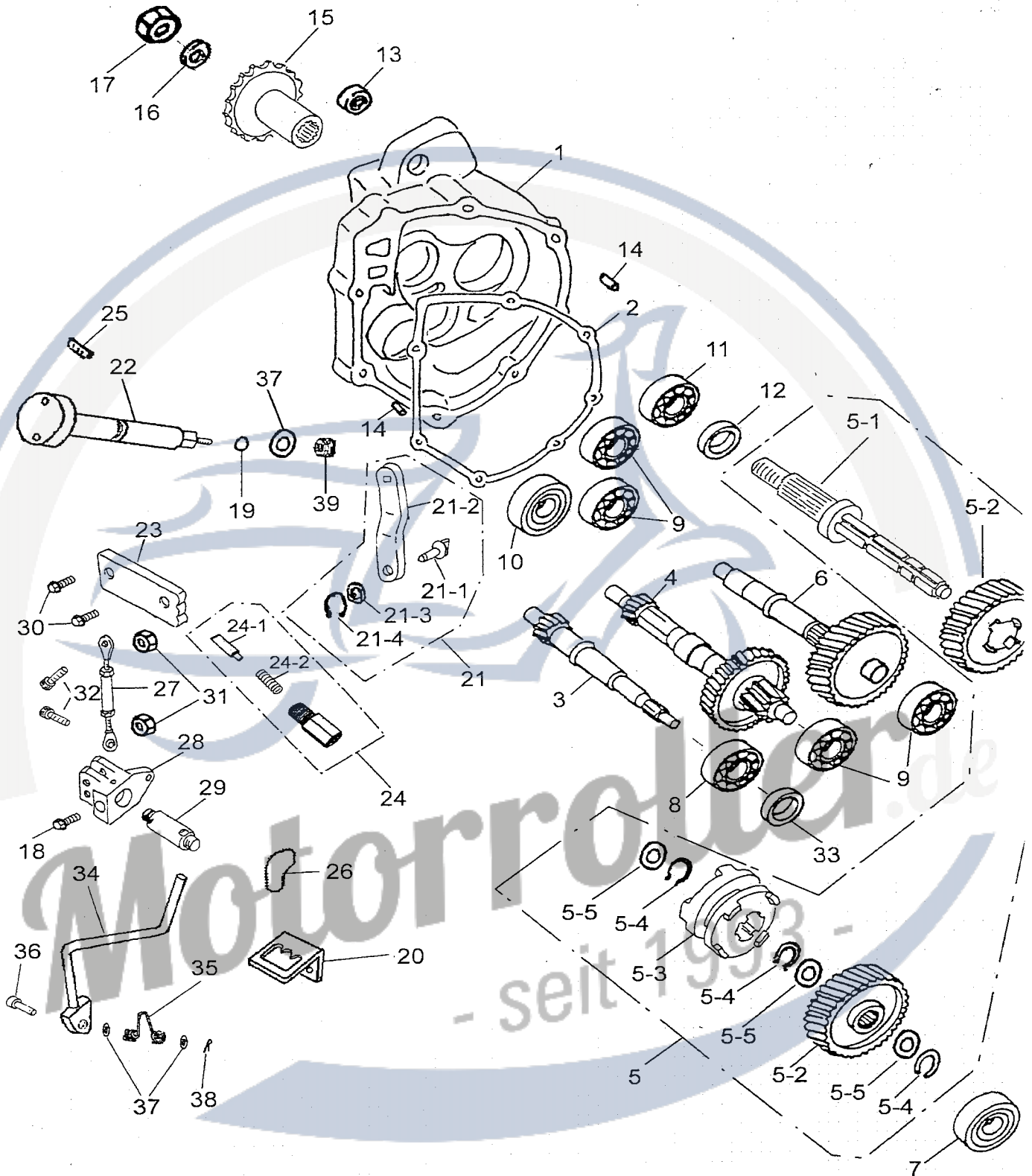


MARK	P/N	DESCRIPTION	PART NO.	Q'TY	REMAR
買記號	件號	英文名稱	部品番號	客戶番號	備註
	10-1	DRIVE FACE ASS'Y(B)	22000-158-000	1	
	10-1-1	SECONDARY FIX SLOT WHEEL	23200-119-000	1	
	10-1-1-1	FACE ASS'Y DRIVEN	23210-119-000	1	
	10-1-1-2	RADIAL BALL BEARING	96100-6902U	1	6902U
	10-1-1-3	INTERNAL CIR CLIP	94512-280IR	1	IRTW-28
	10-1-1-4	NEEDLE BEARING	96200-202918	1	20×29×18
	10-1-2	PLATE ASS'Y DRIVE	22001-156-000	1	
	10-1-2-1	EXTERNAL CIR CLIP	94511-0700E	3	ETW-7
	10-1-2-2	SPRING CLUTCH	22401-119-000	3	
	10-1-2-3	PLATE CLUTCH SIDE	22351-119-000	1	
	10-1-2-4	CLUTCH WEIGHT SET	22535-156-000	3	
	10-1-2-5	RUBBER CLUTCH DAMPER	22804-119-000	3	
	10-1-2-6	PLATE COMP DRIVE	22350-119-000	1	
	10-1-3	OIL SEAL	96500-34414	2	34×41×4

10-1-4	GUIDE PIN	23225-119-000		3	
10-1-5	GUIDE	23226-119-000		3	
10-1-6	SECONDARY SLIDING SLOT WHEEL	23220-119-000		1	
10-1-7	OIL RING	91336-119-000		2	36x2
10-1-8	SECONDARY SPRING SEAT	23237-119-000		1	
10-1-9	COMPRESSION SPRING	23233-158-000		1	
10-1-10	COLLER SPRING	23238-119-000		1	
10-1-11	NUT , SPECIAL	90202-119-000		1	M28
10-1-12	CLUTCH COVER COMP	22100-119-000		1	
10-2	HEX FLANGE NUT	94050-12000-C		1	M12
10-3	BELT DRIVE	23100-122-000		1	743x20x30
10-4	TEFLON RING	21326-156-000		1	

Motorroller.de
- seit 1993 -

D-11 TRANSMISSION 傳動系



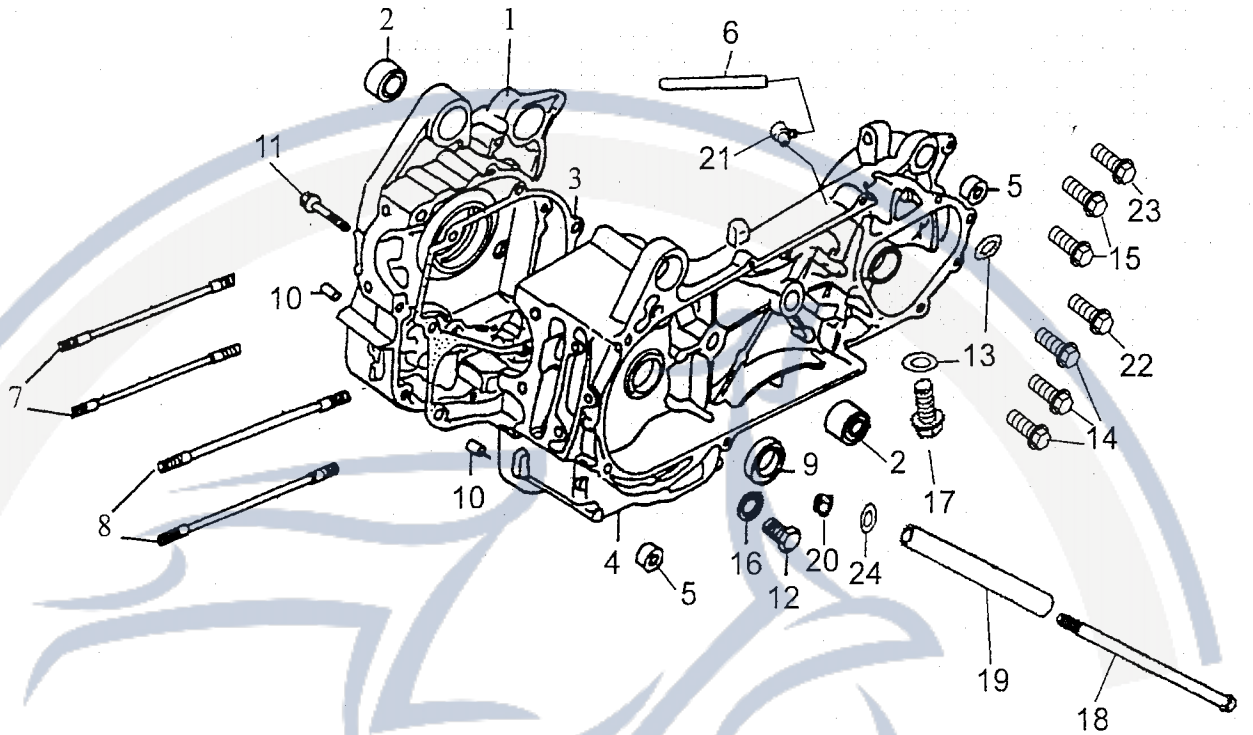
ALLES MARK	P/N	DESCRIPTION	PART NO.		Q'TY	REMAR
買記號	件號	英文名稱	部品番號	客戶番號	用量	備註
	11-1	MISSION COVER	21301-158-000		1	
	11-2	MISSION COVER GASKET	21395-156-000		1	

11-3	SHAFT , DRIVE	23411-119-000	1	
11-4	MAIN AXLE COMP	23420-156-000	1	
11-5	SHAFT , FINAL ASS,Y	23440-156-000	1	
11-5-1	SHAFT , FINAL	23431-156-000	1	
11-5-2	GEAR , TRANSMISSION	23434-156-000	2	
11-5-3	CLUTCH	28430-156-000	1	
11-5-4	C - CIRCLIP	23436-156-000	3	
11-5-5	SPECIAL WASHER	23435-156-000	3	
11-6	COUNTER SHAFT ASS'Y	23433-156-000	1	
11-7	BEARING	96100-62030	1	CS05 6203
11-8	BEARING	96100-62040	1	C3 6204
11-9	BEARING	96100-62020	4	CS05 6202
11-10	BEARING	96100-TMB301	1	TMB301
11-11	BEARING	96100-6004U	1	6004LU
11-12	OIL SEAL	96500-27427	1	
11-13	RUBBER BUSH	96400-082223	1	8x22x23
11-14	DOWEL PIN	94301-08140	2	8x14
11-15	DRIVE SPROCKET	23801-159 -000	1	17T
11-16	PLAIN WASHER	94101-1629030-C	1	16x29x3
11-17	NYLON INSERT LOCK NUT	90350-16000-C	1	M16
11-18	HEX FLANGE BOLT	96000-06025-K	1	M6x25
11-19	O-RING	91312-111-000	1	
11-20	FIX CATCH SUPPORT	21323-156-000	1	
11-21	TRANSMISSION FORK ASS,Y	21310-156-000	1	
11-21-1	TRANSMISSION FORK	21311-156-000	1	
11-21-2	TRANSMISSION SHAFT	21312-156-000	1	
11-21-3	SPECLAL WASHER	23437-156-000	1	
11-21-4	C - CINCLIP	23438-156-000	1	
11-22	TRANSMISSION LINK	21313-156-000	1	
11-23	TRANSMISSION POSITION FIX PLATE	21314-156-000	1	
11-24	TRANSMISSION POSITION FIX BUTTON	21315-156-000	1	
11-24-1	TRANSMISSION FIX PIN	21324-156-000	1	
11-24-2	TRANSMISSION FIX SPRING	21325-156-000	1	
11-25	HEX SOCKET FIX BOLT	91000-05008-K	1	M5x8
11-26	TRANSMISSION LEVER ROD	21322-156-000	1	
11-27	TRANSMISSION FORK LINK	21316-156-000	1	
11-28	TRANSMISSION SET	21317-156-000	1	

11-29	TRANSMISSION SET FIX LINK ASS,Y	21318-156-001		1	
11-30	HEX FLANGE BOLT	96000-06012-10C		2	耐落 M6x12
11-31	NYLON INSERT LOCK NUT	90350-06000-K		2	M6
11-32	HEX SOCKET BOLT	91000-06025-K		2	M6x25
11-33	OIL SEAL	96500-20326		1	20x32x6
11-34	TRANSMISSION LEVER	21319-156-000		1	
11-35	TRANSMISSION LEVER SPRING	21320-156-000		1	
11-36	TRANSMISSION LEVER FIX PIN	21321-156-000		1	
11-37	PLAIN WASHER	94101-0816015-C		3	8x16x1.5
11-38	COTTER PIN	94201-24190		1	
11-39	HEX NUT WITH SERRATION	90350-08000-UK		1	

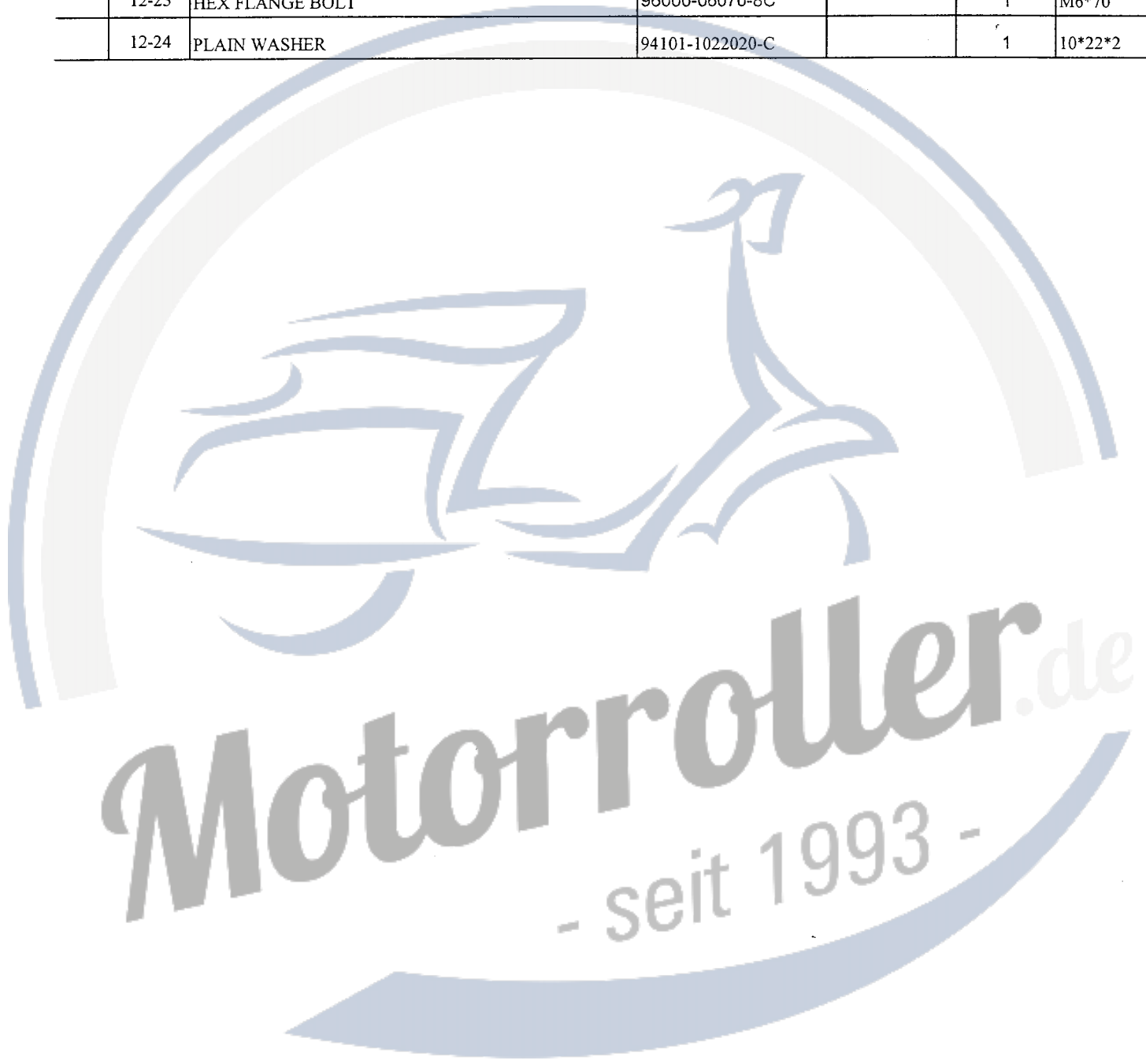
Motorroller.de
- seit 1993 -

D-12 CRANKCASE 曲軸箱

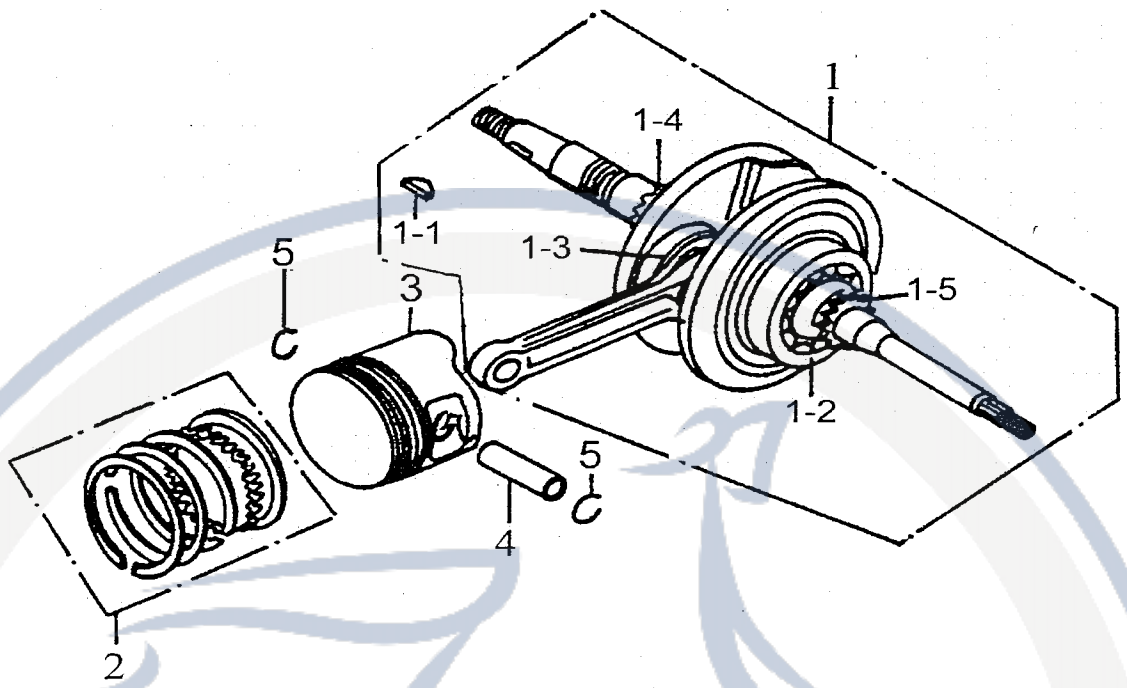


ALLES ARK	P/N	DESCRIPTION	PART NO.		Q'TY	REMARK
零件號	件號	英文名稱	部品番號	客戶番號	用量	備註
	12-1	RIGHT CRANKCASE	11101-158-000		1	
	12-2	BUSH ENGINE HANGER RUBBER	96400-102820		2	10×28×20
	12-3	GASKET CRANKCASE	11191-122-000		1	
	12-4	LEFT CRANKCASE	11201-158-000		1	
	12-5	RUBBER BUSHING	96400-082223		2	8×22×23
	12-6	TUBE BREATHER	16615-113-000		1	
	12-7	STUD BOLT	91001-08181-C		2	M8×181
	12-8	STUD BOLT	91001-08187-C		2	M8×187
	12-9	OIL SEAL	96500-19305		1	19.8×30X5
	12-10	DOWEL PIN	94301-08140		2	8×14
	12-11	HEX FLANGE BOLT	96000-06050-C		1	M6×50
	12-12	HEX FLANGE BOLT	96000-12015-14C		1	M12×15
	12-13	PLAIN WASHER (ALUMINUM)	94101-0816020-L		2	8×16×2
	12-14	HEX FLANGE BOLT	96000-06060-8C		3	M6×60
	12-15	HEX FLANGE BOLT	96000-06065-8C		3	M6×65
	12-16	PLAIN WASHER	94101-1221320-L		1	12×21.3×2
	12-17	HEX FLANGE BOLT	96000-08012-10C		2	M8×12

12-18	HEX FLANGE BOLT	96000-10197-14C		1	M10x197
12-19	ENGING SPACER COLLAR	11150-156-000		1	10*17*125
12-20	NYLON INSERT LOCK NUT	90350-10000-C		1	M10
12-21	BREATHER JOINT	16610-113-000		1	
12-22	HEX FLANGE BOLT	96000-06045-08-C		1	M6x45
12-23	HEX FLANGE BOLT	96000-06070-8C		1	M6*70
12-24	PLAIN WASHER	94101-1022020-C		1	10*22*2

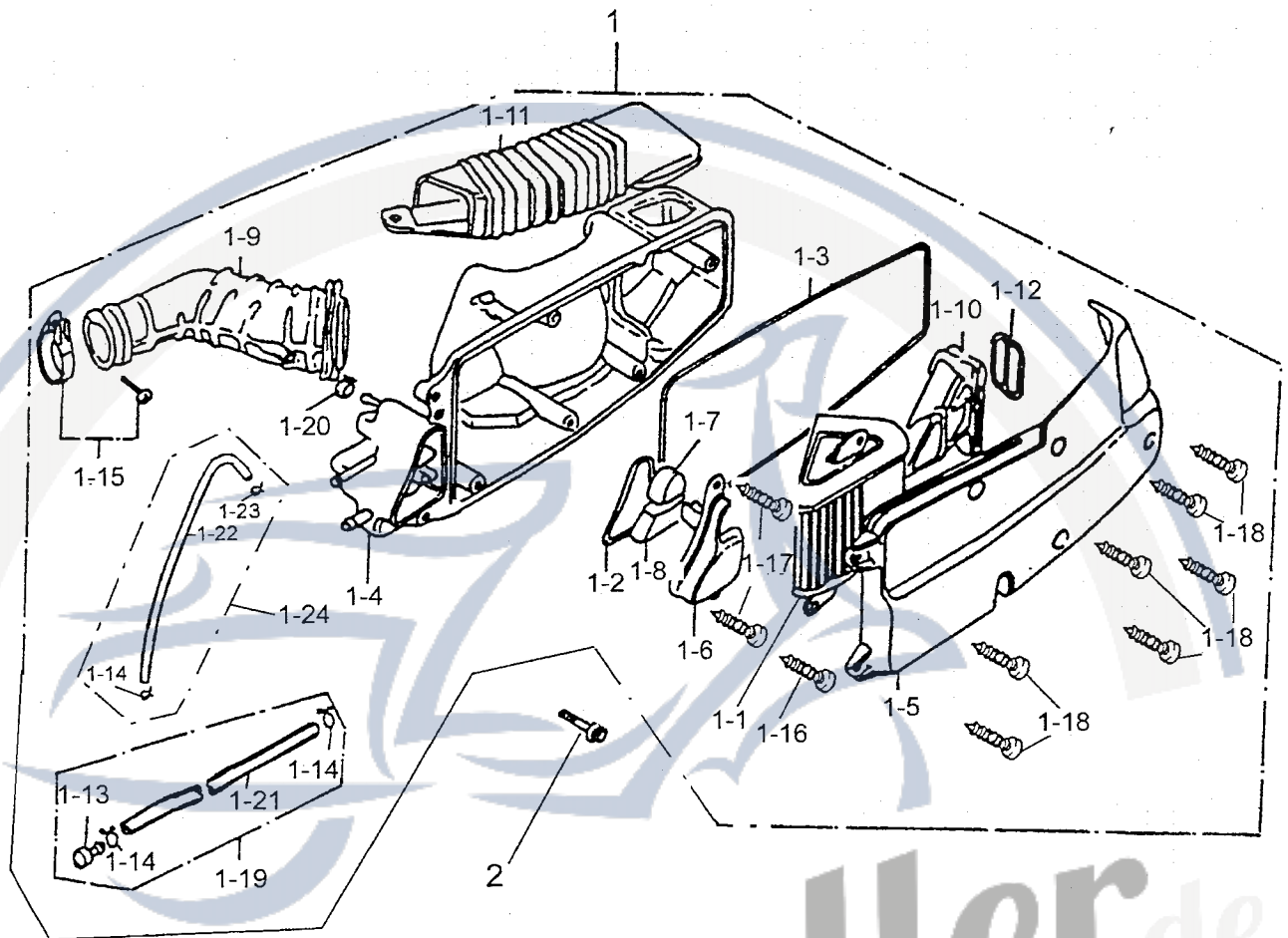


D-13 CRANK SHAFT,PISTON 曲軸、活塞



SALES MARK	P/N	DESCRIPTION	PART NO.		Q'TY	REMARK
販賣記號	件號	英文名稱	部品番號	客戶番號	用量	備註
	13-1	CRANKSHAFT ASS'Y	13000-156-000		1	
	13-1-1	SEMICYCLE KEY	90471-119-000		1	25×4×14
	13-1-2	BEARING	CSSC04A86CS12		1	56×22×15
	13-1-3	NEEDLE BEARING	96200-283313		1	
	13-1-4	TIMING GEAR	14311-119-000		1	17T
	13-1-5	CAM TRANSMISSION GEAR	14322-158-000		1	
	13-1-6	BEARING	TMB305V32		1	62×25×17
	13-2	PISTON RING SET	13011-158-000		1	
	13-3	PISTON	13100-158-000		1	
	13-4	PISTON PIN	13111-158-000		1	10×15×42
	13-5	CLIP PISTON PIN	13115-119-000		2	

D-14 AIR CLEANER 空氣濾清器

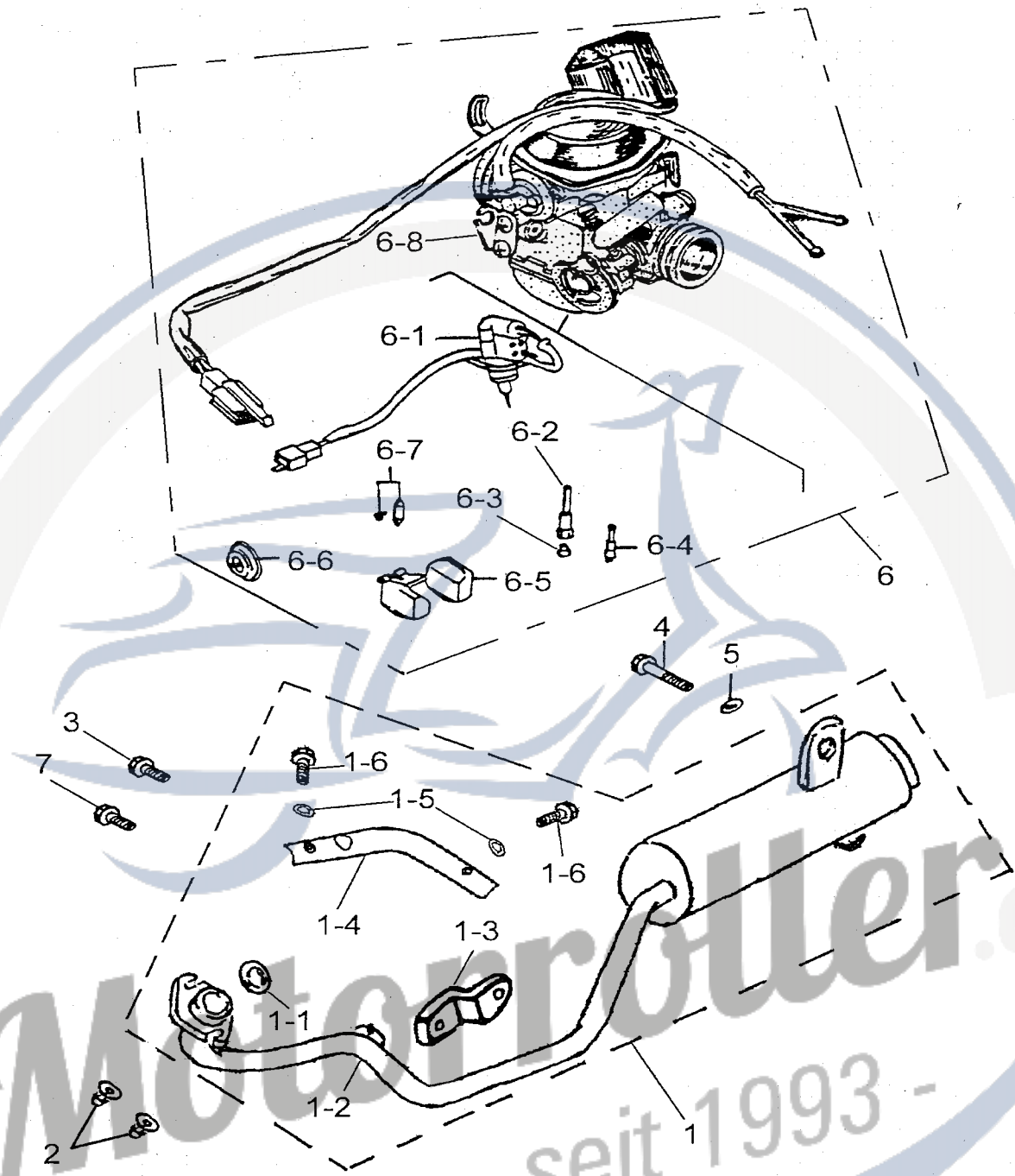


SALES MARK	P/N	DESCRIPTION	PART NO.	Q'TY	REMAI
販賣記號	件號	英文名稱	部品番號	用量	備註
	14-1	AIR CLEANER ASS'Y	17200-156-000	1	
	14-1-1	AIR CLEANER ELEMENT	17205-119-000	1	
	14-1-2	SEAL OIL CATCH	17212-119-000	1	
	14-1-3	SEAL OIL CLEANER COVER	17213-119-000	1	
	14-1-4	AIR CLEANER CASE	17206-119-000	1	
	14-1-5	CLEANER CASE CAP	17207-119-000	1	
	14-1-6	COVER OIL CATCH	17232-119-000	1	
	14-1-7	FILTER BREATHER	17234-119-000	1	
	14-1-8	FILTER OIL CATCH	17235-119-000	1	
	14-1-9	AIR CLEANER JOINT	17253-119-000	1	
	14-1-10	DUCT AIR CLEANER IN	17255-119-000	1	
	14-1-11	DUCT AIR CLEANER CASE	17257-119-000	1	

	14-1-12	SPRING IN DUCT	17258-119-000		1	
	14-1-13	PLUG BREATHER TUBE	17370-119-000		1	
	14-1-14	CLIP	94510-12000		3	12mm
	14-1-15	INTAKE MANIFOLD HOSE CLAMP	14110-119-000		1	
	14-1-16	PAN PHILLIPS BOLT	93500-05010-K		2	M5x10
	14-1-17	TAPPING SCREW TRUSS HEAD PHILLIPS	93903-04012-K		2	4x12
	14-1-18	TAPPING SCREW TRUSS HEAD PHILLIPS	93903-05020-K		7	5x20
	14-1-19	TUBE ASS'Y DRAIN	17360-119-000		1	
	14-1-20	CLAMP TUBE	94509-09000		1	
	14-1-21	TUBE VINYL	94400-08012		1	8x12x240
	14-1-22	BREATHER TUBE	11211-119-000		1	6x8.5
	14-1-23	CLIP	94510-08000		1	8x0.8
	14-1-24	BREATHER TUBE ASS'Y	11210-119-000		1	
	14-2	HEX FLANGE BOLT	96000-06032-814C		2	M6x32

Motorroller.de
- seit 1993 -

D-15 EXHANST MUFFLER,CARBURETOR 排氣管,化油器

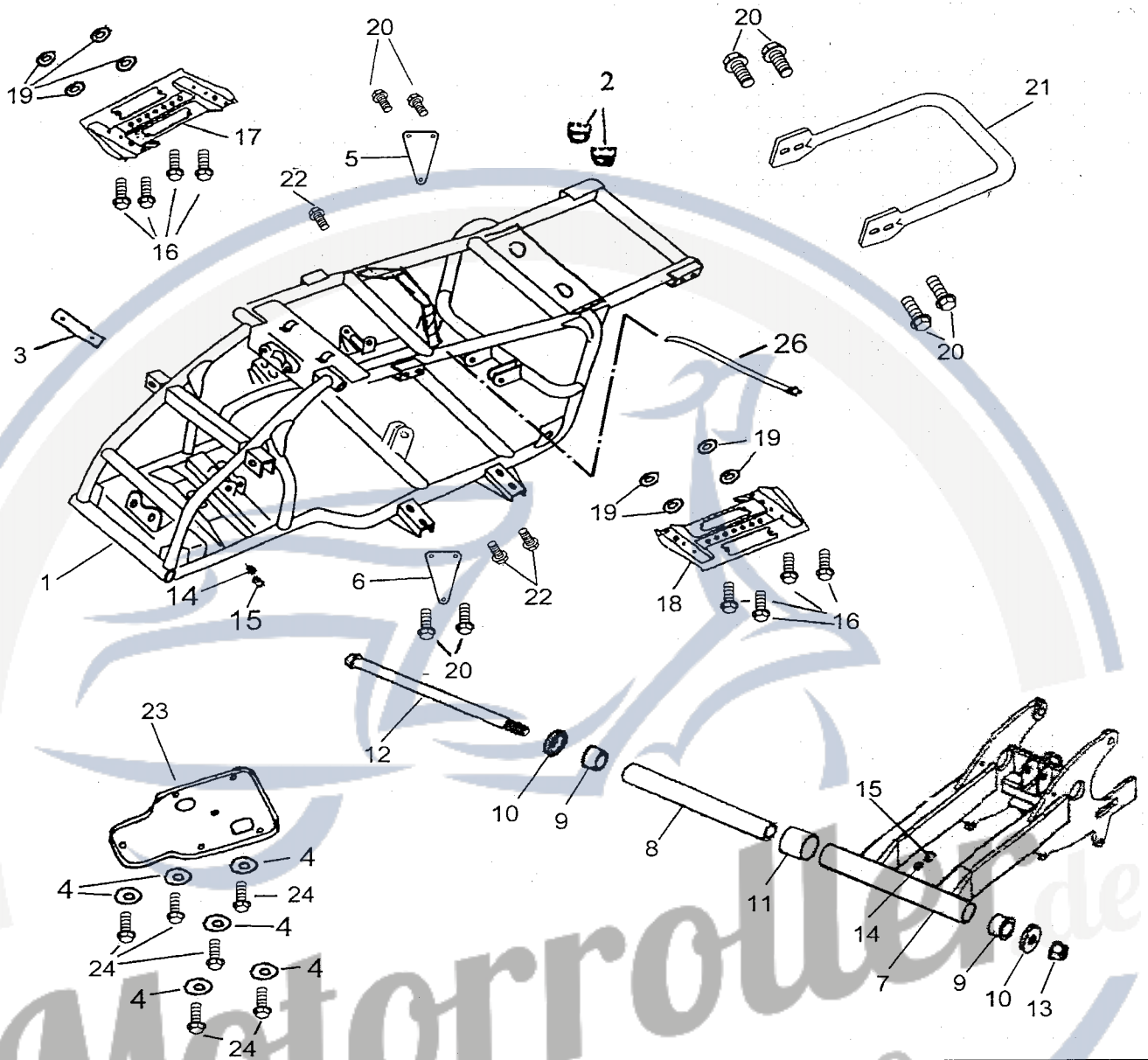


SALES MARK	P/N	DESCRIPTION	PART NO.	POLARIS NO.	Q'TY	REMAR
販賣記號	件號	英文名稱	部品番號	客戶番號	用量	備註
	15-1	EXHAUST PIPE ASS'Y	18300-156-001		1	
	15-1-1	EXHAUST PIPE GASKET	18291-119-000		1	25.4*34*4
	15-1-2	EXHAUST PIPE	18301-156-001		1	
	15-1-3	EXHAUST PIPE FIX PLATE	18317-156-000		1	
	15-1-4	EXHAUST PIPE PROTECTOR	18315-156-001		1	
	15-1-5	GASKET	94102-0613010		2	6*13*1

15-1-6	HEX FLANGE BOLT	93500-060010		2	M6*10
15-2	NUT CAP	90301-08000-C		2	M6
15-3	HEX FLANGE BOLT	96000-08016-K		1	M8x16
15-4	HEX FLANGE BOLT	96000-08030-K		1	M8x30
15-5	PLAIN WASHER	94101-1022020-C		1	10*22*2
15-6	CARBURETOR ASS'Y	16100-119-000		1	
15-6-1	PLUNGER STARTER	17215-119-000		1	
15-6-2	NEEDLE NOZZLE	16105-119-000		1	
15-6-3	MAIN NOZZLE	16108-119-000		1	#112
15-6-4	PILOT JET	16110-119-000		1	#35
15-6-5	FLOAT	16118-119-000		1	
15-6-6	PLUNGER FILM	16048-119-000		1	
15-6-7	PLUNGER FILM	16117-119-000		1	
15-6-8	THROTTLE CABLE FIX SEAT	16120-119-000		1	
15-7	HEX FLANGE BOLT	96000-08025-K		1	M8x25

Motorroller.de
- seit 1993 -

D-16 FRAME BODY 車架

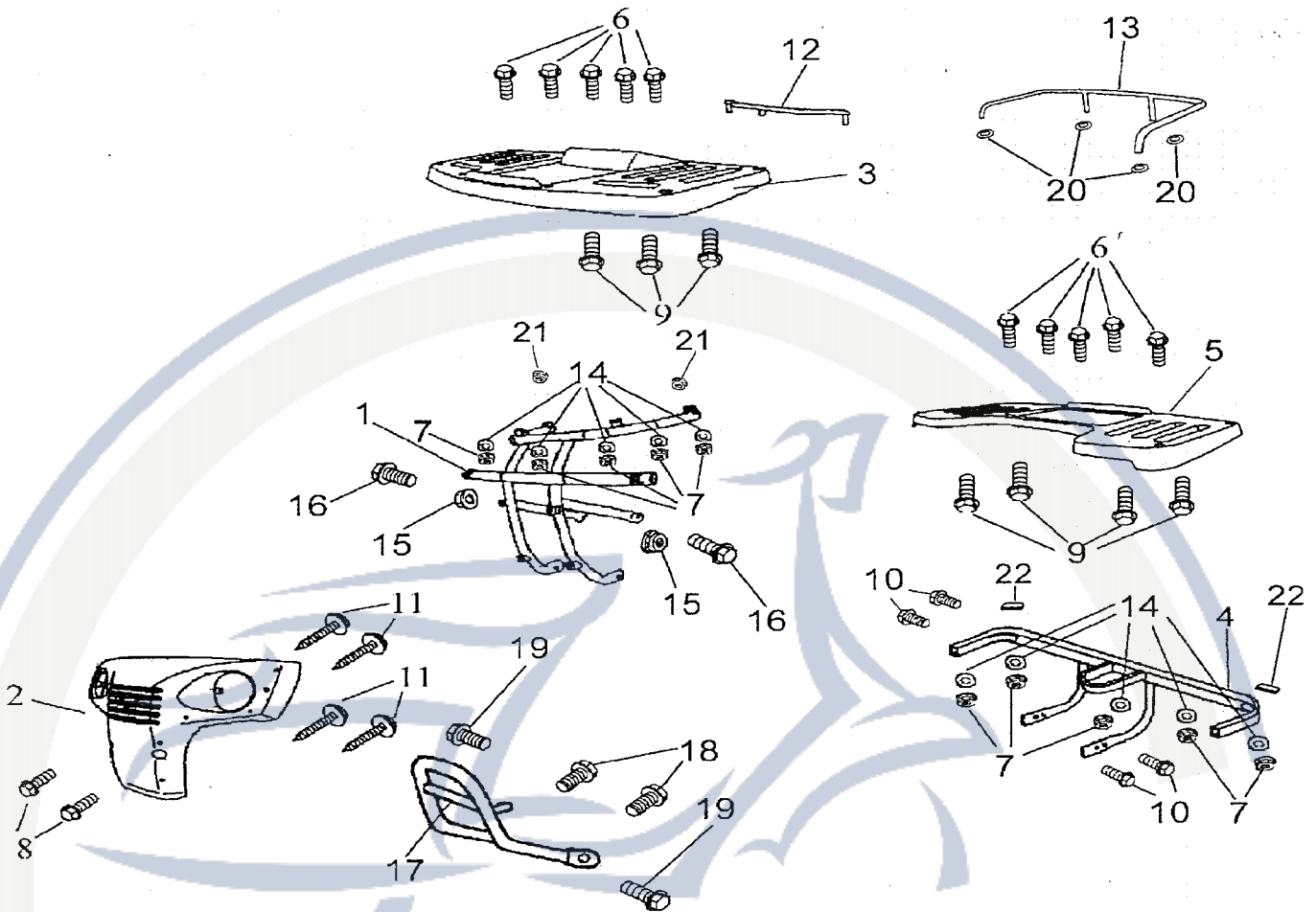


SALES MARK	P/N	DESCRIPTION	PART NO.	Q'TY	REMAR
販賣記號	件號	英文名稱	部品番號	用量	備註
	16-1	FRAME COMP	50100-159-001	1	
	16-2	SEAT RUBBER	77220-131-000	2	Ø37.5 Ø13.5x23
	16-3	FLANGE NUMBER PLATE	50130-131-000	1	
	16-4	SPRING WASHER	94111-07500-K	6	
	16-5	RIGHT ENGING BRACKET PLATE	50351-158-000	1	
	16-6	LEFT ENGING BRACKET PLATE	50355-158-000	1	
	16-7	SWING ARM SUB ASS'Y	52410-156-001	1	
	16-8	SWING ARM SPACER TUBE	52420-131-000	1	
	16-9	GREASE CONTAIN SEAT	52421-131-000	2	
	16-10	SWING ARM SEAT COVER	52422-131-000	2	

16-11	RUBBER SLEEVE	52423-156-000		1	
16-12	HEX FLANGE BOLT	96000-14290-C		1	M14x290
16-13	INSERT LOCK NUT	90350-14000-UC		1	M14
16-14	GREASE VALVE	51300-131-000		2	
16-15	GREASE VALVE RUBBER CAP	51301-131-000		2	
16-16	HEX FLANGE BOLT	96000-08012-K		8	M8x12
16-17	RIGHT FOOTWELL BOTTOM BOARD	51105-156-000		1	
16-18	LEFT FOOTWELL BOTTOM BOARD	51120-156-000		1	
16-19	FOOT REST GROMMER	64320-151-000		8	
16-20	HEX FLANGE BOLT	96000-08014-K		4	M8x14
16-21	REAR HANDLE	50105-159-000		1	
16-22	HEX FLANGE BOLT	96000-08040-K		3	M8x40
16-23	HEX FLANGE BOLT	96000-08035-K		4	M8x35
16-24	PROTECTION FRAME BOTTOM BOARD	50106-156-000		1	
16-25	HEX WASHER FACE BOLT	96000-06008-K		6	M6x8
16-26	STRAP	90569-131-000		1	

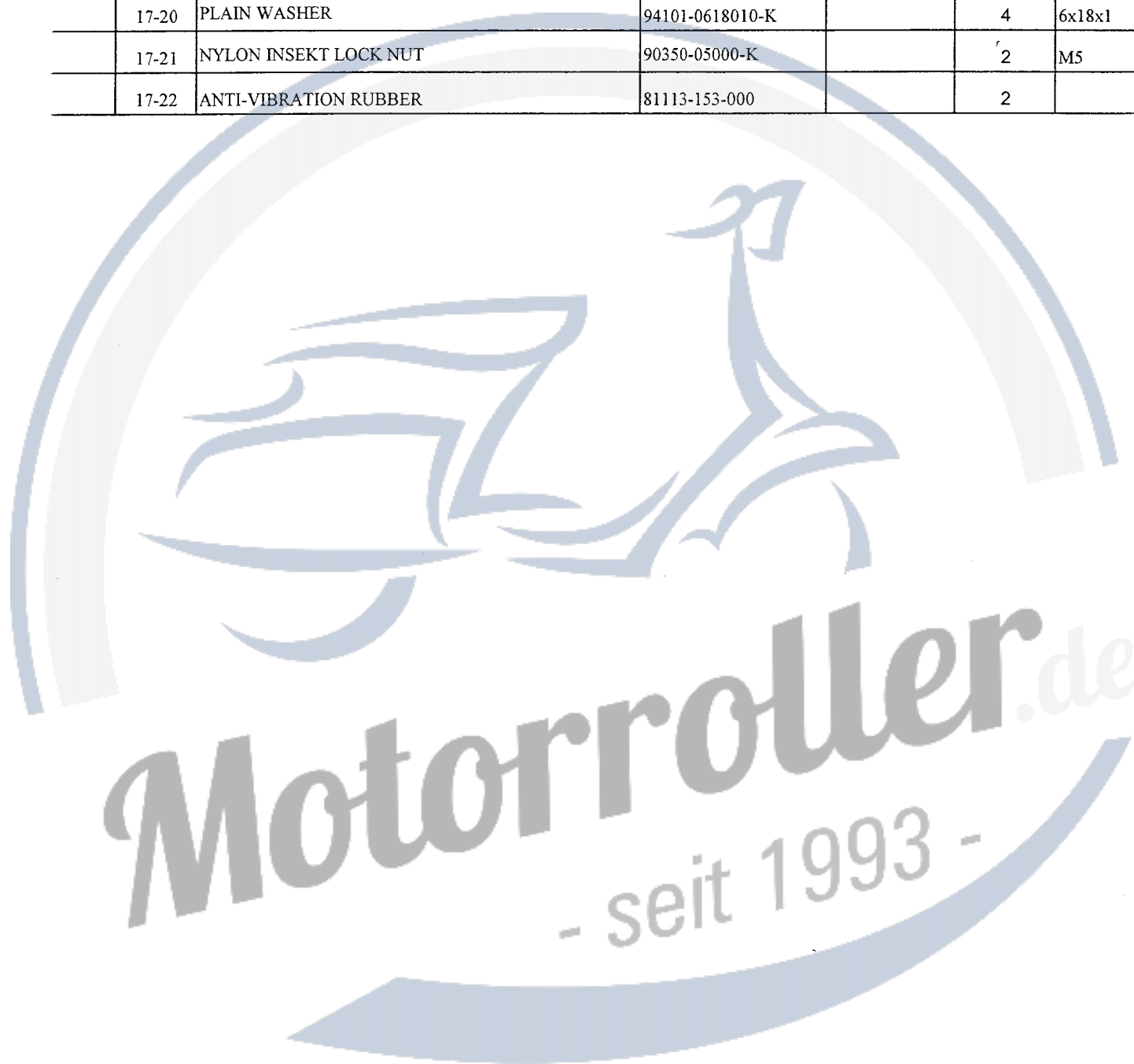
Motorroller.de
- seit 1993 -

D-17 BUMPER、FRONT AND REAR RACK前、後保險桿，前、後貨架

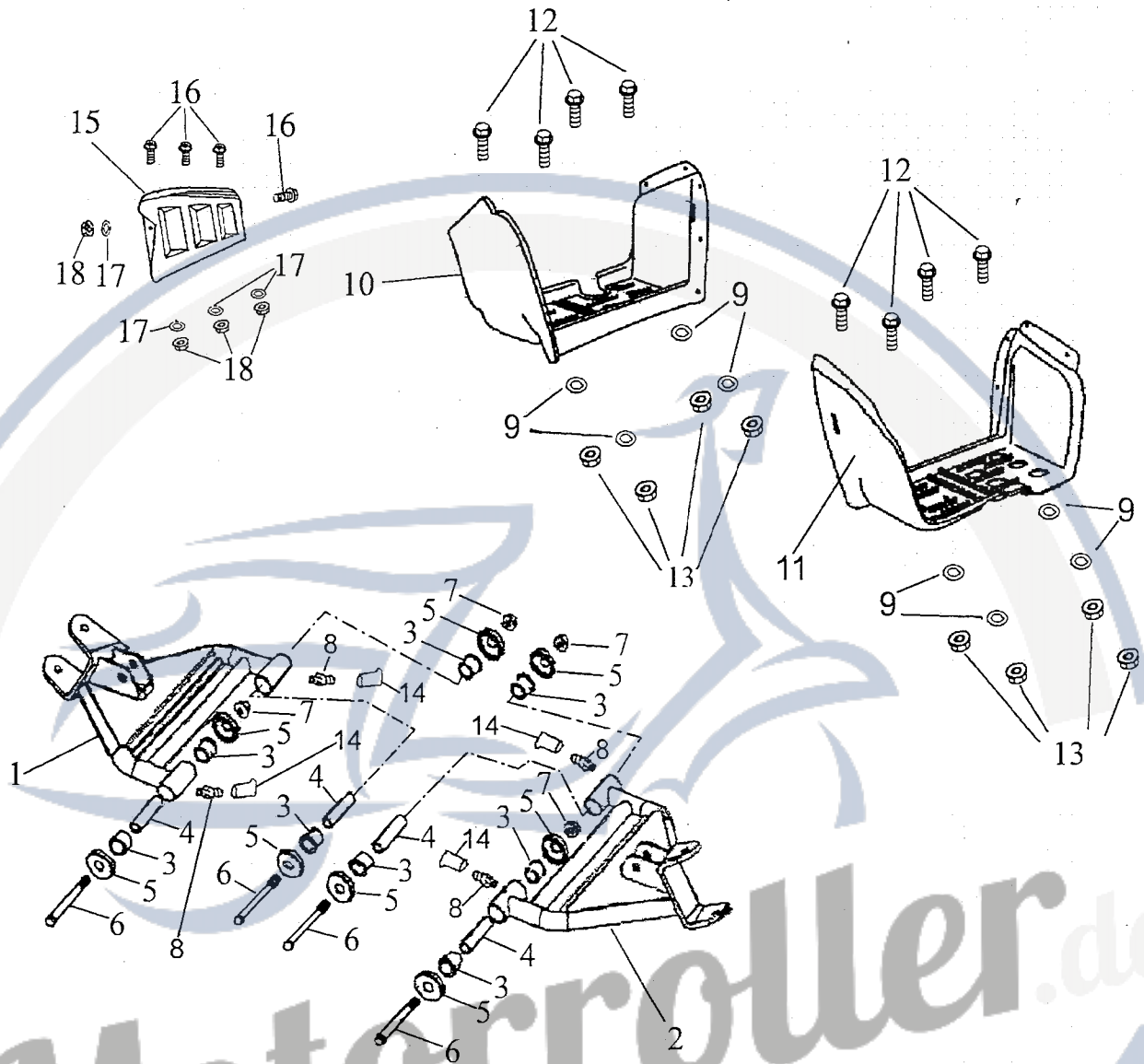


SALES MARK	P/N	DESCRIPTION	PART NO.	POLARIS NO.	Q'TY	REMARK
販賣記號	件號	英文名稱	部品番號	客戶番號	用量	備註
	17-1	BUMPER	50450-156-001		1	
	17-2	BUMPER COVER	50461-159-000		1	
	17-3	FRONT RACK	81100-156-000		1	
	17-4	REAR IRON RACE	81111-159-000		1	
	17-5	REAR RACK	81110-156-000		1	
	17-6	PLAIN PHILLIPS BOLT WITH WASHER	96318-06032-K		10	M6x32
	17-7	NYLON INSEKT LOCK NUT	90350-06000-K		10	M6
	17-8	PLAIN PHILLIPS BOLT	93100-05016-K		2	M5x16
	17-9	HEX FLANGE BOLT	96000-06016-K		7	M6x16
	17-10	HEX FLANGE BOLT	96000-08012-K		4	M8x12
	17-11	TAPPING SCREW	93903-05016-K		4	M5x16
	17-12	FRONT RAILING	81101-156-000		1	
	17-13	REAR RAILING	81112-156-000		1	
	17-14	PLAIN WASHER	94101-0613010-K		10	6x13x1

17-15	HEX FLANGE NUT	94050-06000-K		2	
17-16	HEX FLANGE BOLT	96000-06016-K		2	
17-17	BUMPER	50455-156-001		1	
17-18	HEX FLANGE BOLT	96000-06040-K		2	M6x40
17-19	HEX FLANGE BOLT	96000-08014-K		2	M8x14
17-20	PLAIN WASHER	94101-0618010-K		4	6x18x1
17-21	NYLON INSEKT LOCK NUT	90350-05000-K		2	M5
17-22	ANTI-VIBRATION RUBBER	81113-153-000		2	



D-18 SWING ARM, FOOTREST 前避震臂, 脚踏板

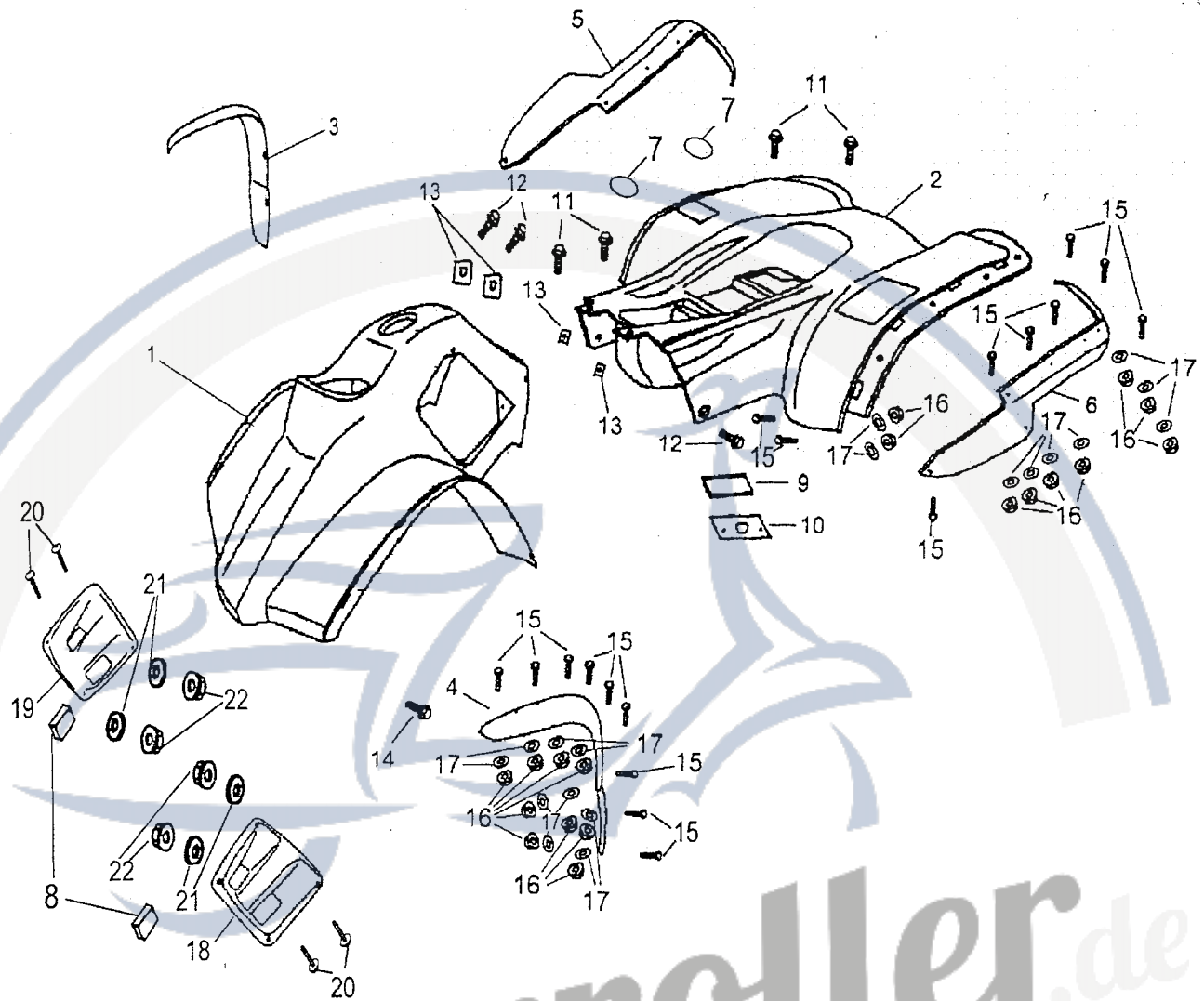


ALLES IARK	P/N	DESCRIPTION	PART NO.	POLARIS NO.	Q'TY	REMAR
買賣記號	件號	英文名稱	部品番號	客戶番號	用量	備註
	18-1	RIGHT SUSPENSION ARM	53030-156-001		1	
	18-2	SUSPENSION ARM	53130-156-001		1	
	18-3	SUSPENSION ARM BUSH	53135-156-000		8	15.5*21*18
	18-4	SPACER TUBE	53140-156-000		4	10*15*55
	18-5	DUST PROOF RUBBER	52426-156-000		8	
	18-6	HEX FLANGE BOLT	96000-10075-KL		4	M10x75
	18-7	HEX FLANGE NUT	94050-10000-C		4	M10
	18-8	GREASE VALVE	51300-131-000		4	

18-9	PLAIN WASHER	94101-0613010-K		8	6x13x1
18-10	RIGHT FOOTREST	64300-156-002		1	
18-11	LEFT FOOTREST	64310-156-001		1	
18-12	HEX BOLT WITH WASHER	92000-06016-K		8	M6x16
18-13	NYLON INSERT LOCK NUT	90350-06000-K		8	M6
18-14	GREASE VALVE RUBBER CAP	51301-131-000		4	
18-15	HEAT SHIELD	50480-156-000		1	
18-16	PAN PHILLIPS BOLT	93100-05016-K		4	M5*16
18-17	PLAIN WASHER	94101-0514010-K		4	5*14*1
18-18	NYLON INSERT LOCK NUT	90350-05000-K		4	M5

Motorroller.de
- seit 1993 -

D-19 FENDER 擋泥板

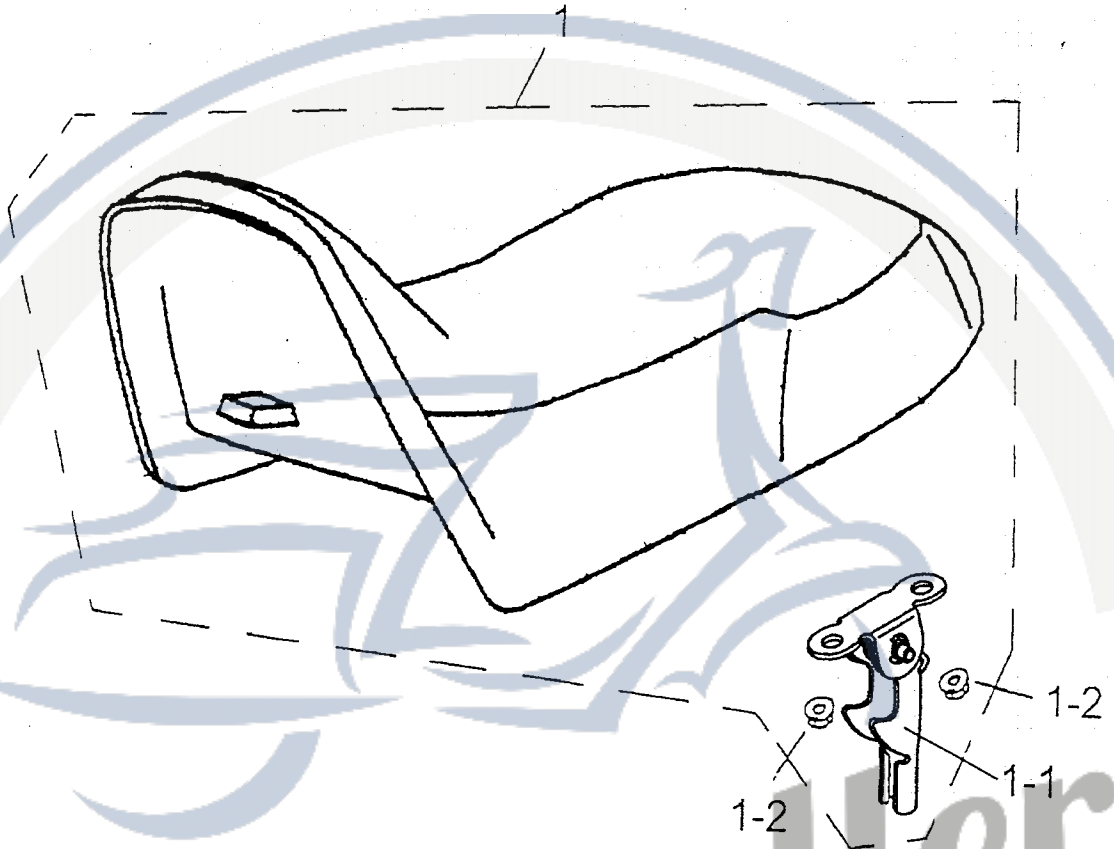


SALES MARK	P/N	DESCRIPTION	PART NO.	Q'TY	REMAI
販賣記號	件號	英文名稱	部品番號	用量	備註
	19-1	FRONT FENDER (BLUE)	61100-156-B385	1	藍色
	19-2	REAR FENDER (BLUE)	61000-156-B385	1	藍色
	19-3	FRONT RH. MUDFLAP	61105-156-000	1	
	19-4	FRONT LH. MUDFLAP	61110-156-000	1	
	19-5	REAR RH. MUDFLAP	61006-159-000	1	
	19-6	REAR LH. MUDFLAP	61011-159-000	1	
	19-7	O-RING	91313-131-000	2	φ60.5×φ2.4
	19-8	ANTI-VIBRATION RUBBER	81113-153-000	2	
	19-9	BATTERY RUBBER	31510-131-000	1	
	19-10	PROTECTOR PAD	80140-131-000	1	
	19-11	HEX BOLT WITH PLAIN WASHER	92000-06016-K	4	M6×16
	19-12	PAN PHILLIPS BOLT WITH PLAIN WASHER	96318-06016-K	4	M6×16

19-13	U PLATE NUT	90344-06000-C		4	M6
19-14	HEX BOLT WITH FIX WASHER	92003-06016-K		2	
19-15	PAN PHILLIPS BOLT	93100-05012-K		46	M5 ×12
19-16	NYLON INSERT LOCK NUT	90350-05000-K		46	M5
19-17	PLAIN WASHER	94101-0514010-K		46	φ5×φ14×1mm
19-18	LEFT DECORATE COVER	17660-156-000		1	
19-19	RIGHT DECORATE COVER	17650-156-000		1	
19-20	PAN PHILLIPS BOLT	93100-04016-K		4	M4x16
19-21	PLAIN WASHER	94101-0412010-K		4	4*12*1
19-22	NYLON INSERT LOCK NUT	90350-04000-K		4	M4

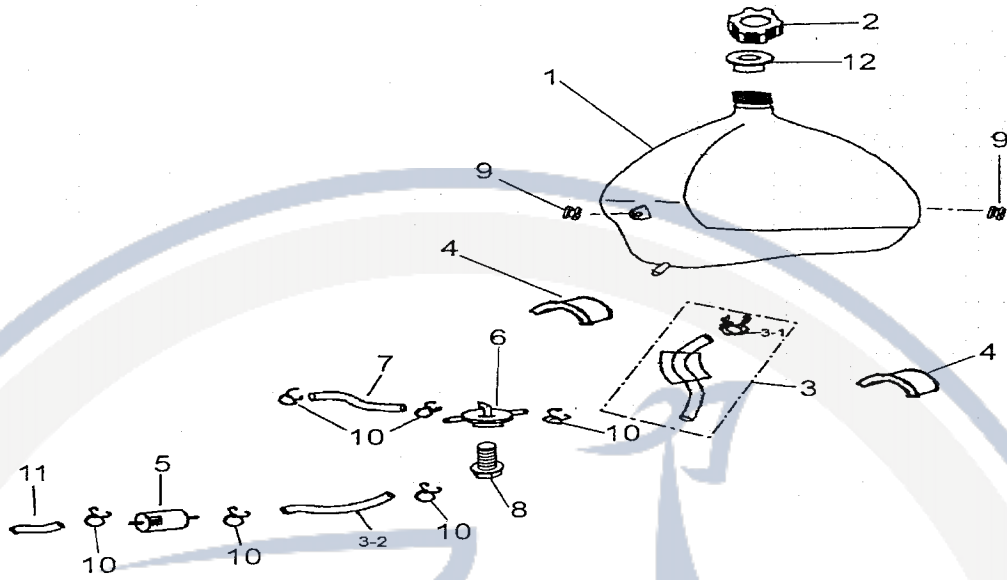
Motorroller.de
- seit 1993 -

D-20 SEAT 座墊



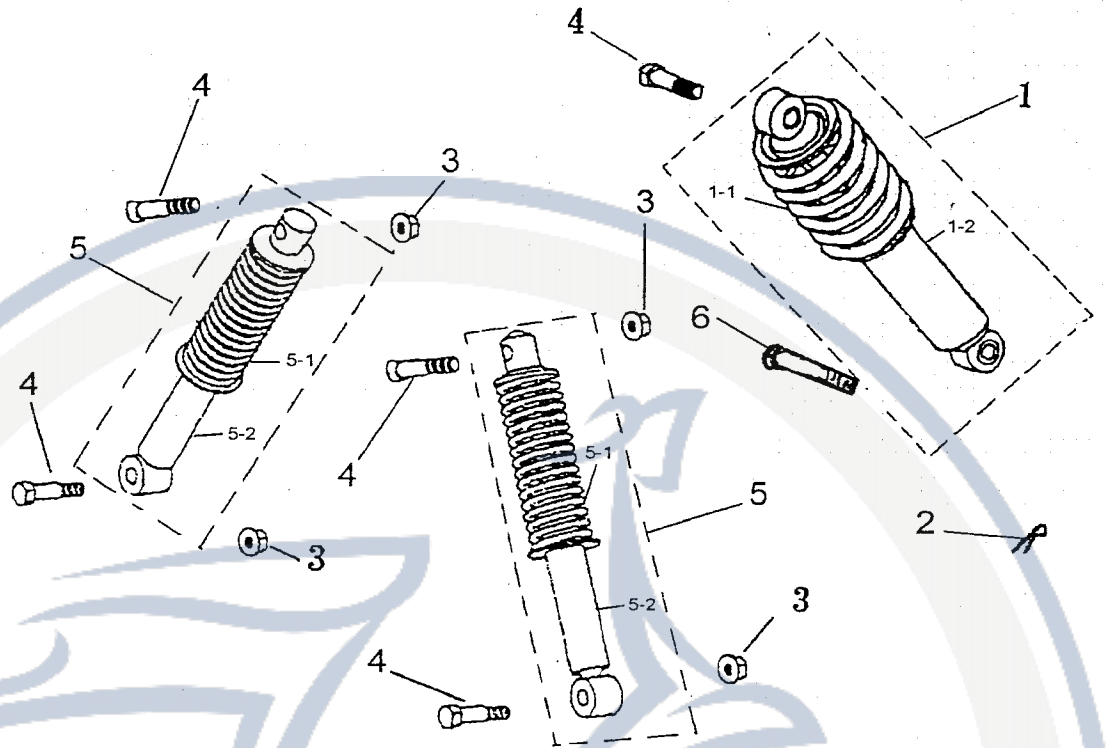
ARK	P/N	DESCRIPTION	PART NO.	Q'TY	REMARK
零件號	件號	英文名稱	部品番號	客戶番號	備註
	20-1	SEAT ASSY.	77200-159-00A	1	
	20-1-1	SEAT FIX HOOK	77210-131-000	1	
	20-1-2	HEX FLANGE NUT	94050-06000-C	2	M6

D-21 FUEL TANK 汽油箱



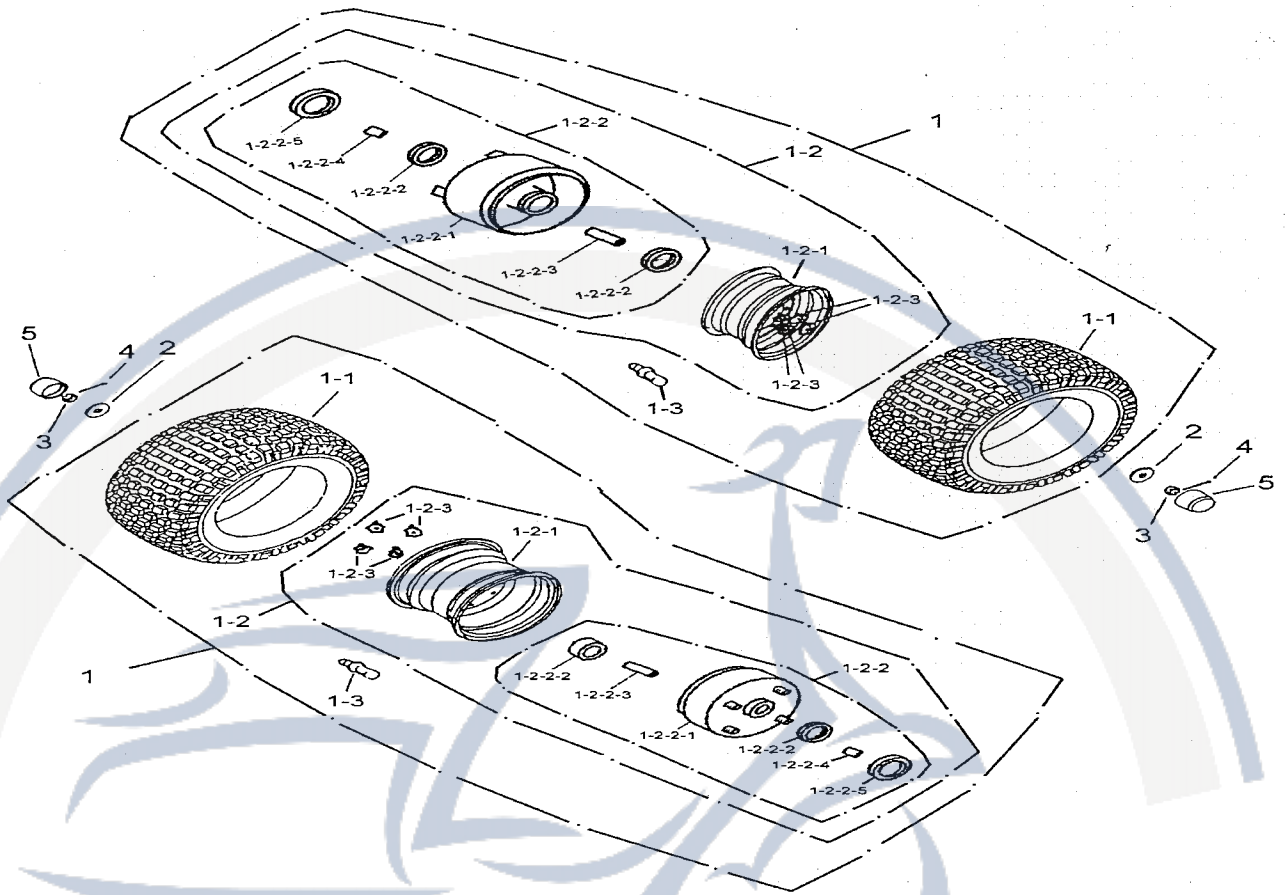
圖號 ARK	P/N	DESCRIPTION	PART NO.	客戶番號	Q'TY	REMARK
圖號	件號	英文名稱	部品番號	客戶番號	用量	備註
	21-1	FUEL TANK COMP	17500-156-000		1	
	21-2	FUEL TANK CAP	17620-156-000		1	
	21-2-1	BREATHER SHEET	17621-156-000		1	
	21-3	FUEL TUBE A	94401-05009-1		1	210mmxØ5擴孔
	21-3-1	CLIP	94510-12000		1	
	21-3-2	FUEL TUBE B	94400-05009-100		1	5*9(L=100);\
	21-4	FUEL TANK RUBBER MAT	64319-131-000		2	
	21-5	FUEL FILTER ASSY	16952-111-000		1	
	21-6	COCK ASS'Y,FUEL AUTO	16950-111-000		1	
	21-7	COCK ASS'Y,FUEL AUTO	94400-04008-165		1	4*8(L=165);W
	21-8	HEX FLANGE BOLT	96000-06016-K		1	M6x16
	21-9	GROMMER	83574-131-000		2	
	21-10	CLIP	94510-08000		6	
	21-11	FUEL TUBE C	94401-04008		1	80mmØ4擴孔
	21-12	BREATHER FILM	17625-131-001		1	

D-22 SUSPENSION 避震器



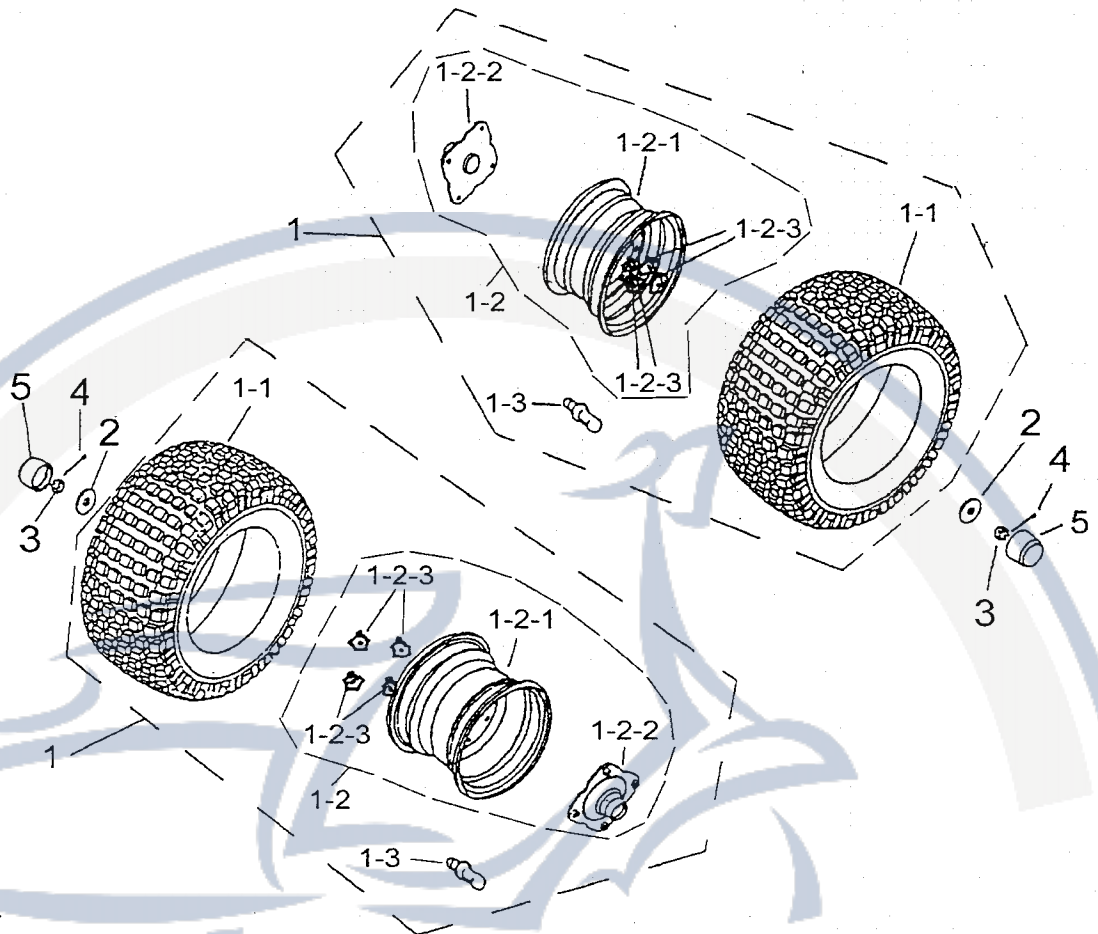
ALES MARK	P/N	DESCRIPTION	PART NO.		Q'TY	REMAR
買賣記號	件號	英文名稱	部品番號	客戶番號	用量	備註
	22-1	REAR SUSPENSION	52400-156-001		1	黑色
	22-1-1	REAR SUSPENSION SPRING	52401-156-001		1	黑色
	22-1-2	REAR SUSPENSION INNER TUBE COMP	52402-156-000		1	
	22-2	COTTER PIN	94201-24190		1	
	22-3	HEX FLANGE NUT	94050-10000-C		4	M10
	22-4	HEX FLANGE NUT	96000-10040-KL		5	M10×40(黑)
	22-5	FRONT SUSPENSION	51100-156-001		2	黑色
	22-5-1	FRONT SUSPENSION SPRING	51101-156-000		2	黑色
	22-5-2	FRONT SUSPENSION INNER TUBE COMP	51102-156-000		2	
	22-6	REAR SUSPENSION FIX AXLE	52415-156-000		1	Ø12x70

D-23 FRONT WHEEL 前輪組



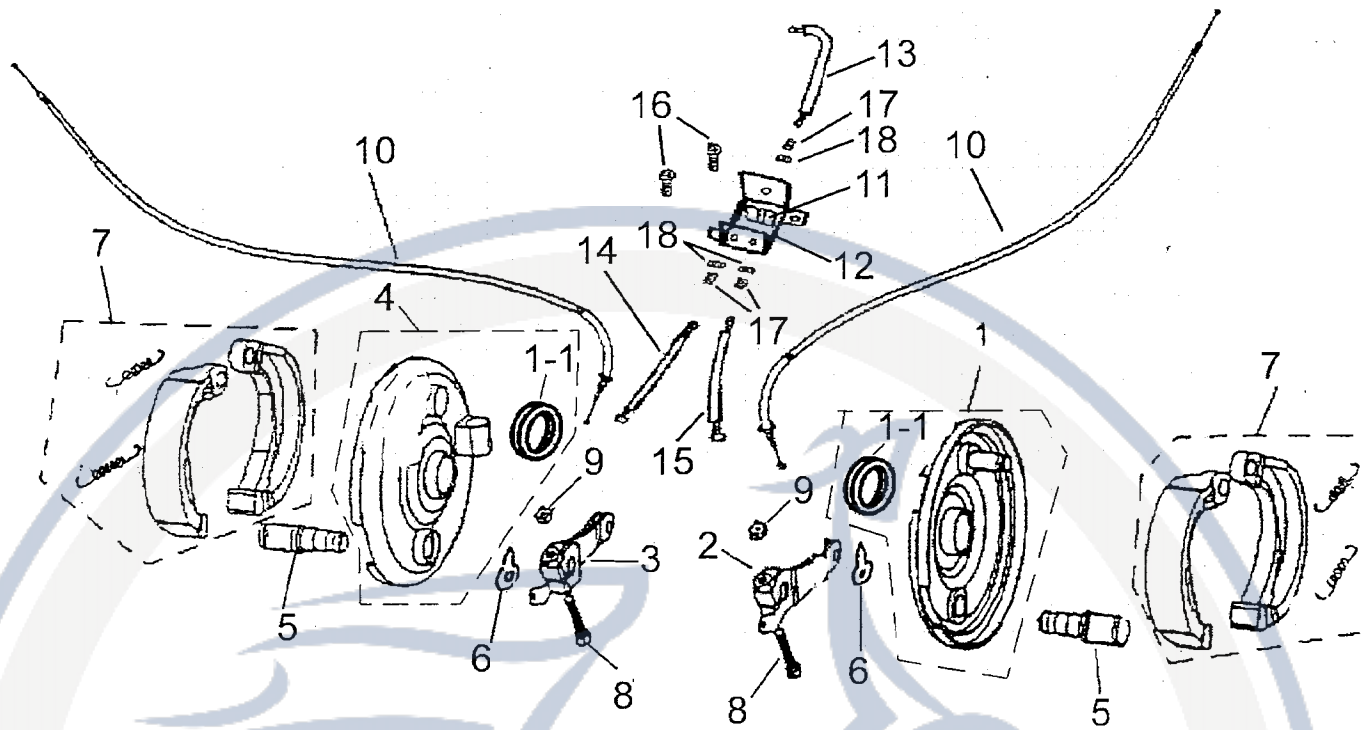
SALES MARK	P/N	DESCRIPTION	PART NO.	客戶番號	Q'TY	REMARK
販賣記號	件號	英文名稱	部品番號		用量	備註
	23-1	FRONT WHEEL ASS'Y	42700-156-00R1		2	21x7-10
	23-1-1	TIRE	42711-156-001		2	21x7-10 DI2
	23-1-2	FRONT RIM ASS'Y	42705-156-000		2	
	23-1-2-1	WHEEL	42701-156-000		2	10"x5.5
	23-1-2-2	FRONT BRAKE DRUM ASS'Y	45005-156-000		2	
	23-1-2-2-1	FRONT BRAKE DRUM	45008-156-000		2	
	23-1-2-2-2	BEARING	96100-6003LU		4	6003LU
	23-1-2-2-3	INSIDE SPACER COLLAR	44311-156-000		2	
	23-1-2-2-4	OUTSIDE SPACER COLLAR	44312-156-000		2	
	23-1-2-2-5	OIL SEAL	96500-2335060		2	23x35x6
	23-1-2-3	NYLON INSERT LOCK NUT	90350-10000-UC		8	M10
	23-1-3	RIM VALVE	42616-131-000		2	
	23-2	PLAIN WASHER	94102-1440045-C		2	14x40x4.5
	23-3	INSERT LOCK NUT	90352-14000-C		2	M14
	23-4	COTTER PIN	94201-32320		2	3.2x32
	23-5	RUBBER CAP	42730-151-000		2	

D-24 REAR WHEEL 後輪組



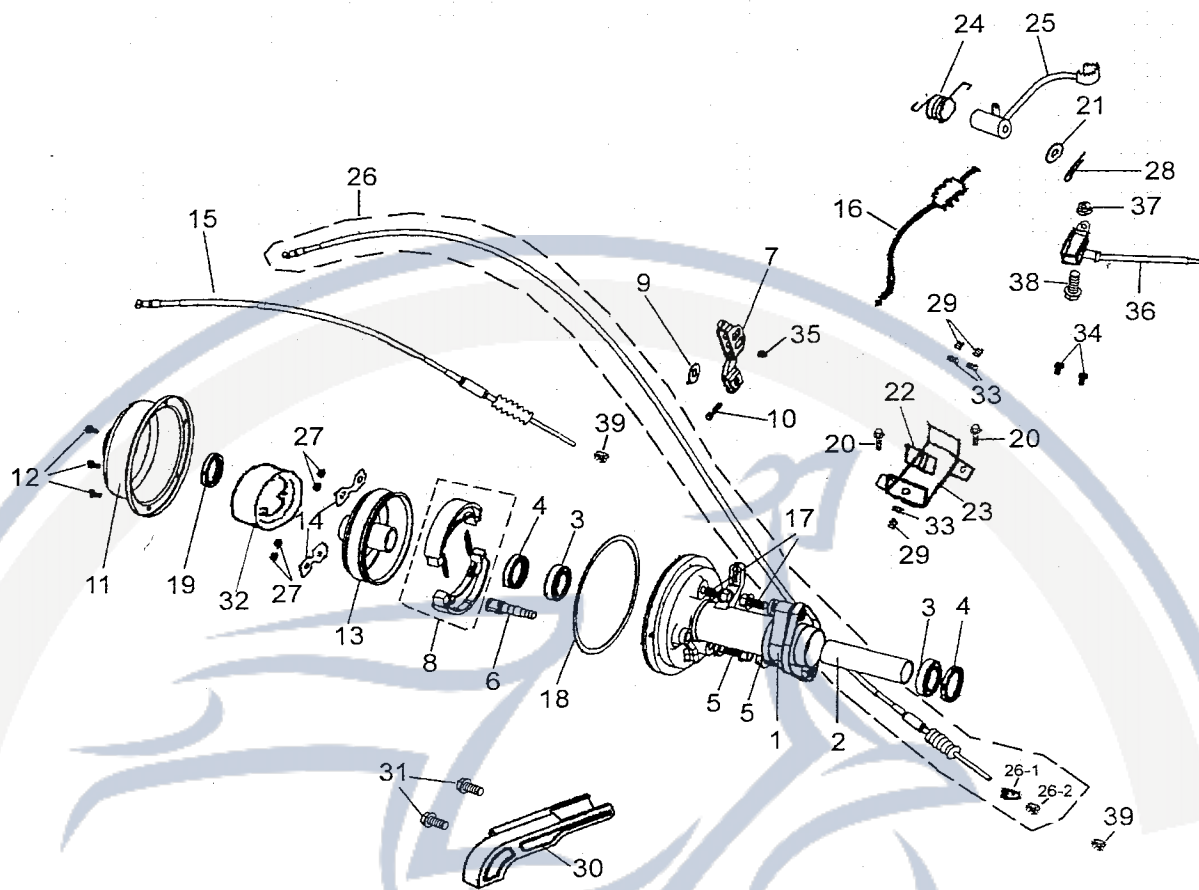
SALES MARK	P/N	DESCRIPTION	PART NO.		Q'TY	REMAI
販賣記號	件號	英文名稱	部品番號	客戶番號	用量	備註
	24-1	REAR WHEEL ASS'Y	42800-156-00S1		2	21x10-8
	24-1-1	TIRE	42811-156-001		2	21x10-8 DI2
	24-1-2	REAR RIM ASS'Y (R)	42706-156-000		2	
	24-1-2-1	WHEEL	42801-156-000		2	8"x8"
	24-1-2-2	SHAFT CONNECTER	97010-156-001		2	
	24-1-2-3	NYLON INSERT LOCK NUT	90350-10000-UC		8	M10
	24-1-3	RIM VALVE	42616-131-000		2	
	24-2	PLAIN WASHER	94101-1440045-C		2	14x40x4.5
	24-3	INSERT LOCK NUT	90352-14000-C		2	M14
	24-4	COTTER PIN	94201-32320		2	3.2x320
	24-5	RUBBER CAP	42730-151-000		2	

D-25 FRONT BRAKE DISK SYSTEM 前剎車組



SALES MARK	P/N	DESCRIPTION	PART NO.		Q'TY	REMARK
販賣記號	件號	英文名稱	部品番號	客戶番號	用量	備註
	25-1	FRONT BRAKE PLATE (L)	45010-156-001		1	雙煞車線孔
	25-1-1	OIL SEAL	96500-4052060		2	
	25-2	FRONT BRAKE ARM (L)	45410-159-000		1	雙煞車線孔
	25-3	FRONT BRAKE ARM (R)	45409-159-000		1	雙煞車線孔
	25-4	FRONT BRAKE PLATE (R)	45020-156-001		1	雙煞車線孔
	25-5	FRONT BRAKE CAM SHAFT	45141-156-000		2	
	25-6	BRAKE GUIDE	45142-156-000		2	
	25-7	BRAKE SHOE COMP	43120-111-00C		2	非石棉
	25-8	HEX BOLT	96000-06032-C		2	M6x32
	25-9	HEX NUT	94001-06000-C		2	M6
	25-10	FRONT BRAKE CABLE	45450-156-001		2	
	25-11	CONNECTER WIRE LEVELR	45452-133-000		1	
	25-12	CONNECTER WIRE SEAT	45453-133-000		1	
	25-13	FRONT PEDAL BRAKE CONNECTED CABLE	45454-159-000		1	
	25-14	R.FRONT PEDAL BRAKE CABLE	45455-159-000		1	
	25-15	L.FRONT PEDAL BRAKE CABLE	45457-159-000		1	
	25-16	FLAT HEAD PHILLIPS BOLT	93902-06008-B		2	M6*8
	25-17	INSERT BOLT	45421-133-000		3	
	25-18	INSERT NUT	45422-133-000		3	

D-26 REAR BRAKE DISK SYSTEM 後剎車組



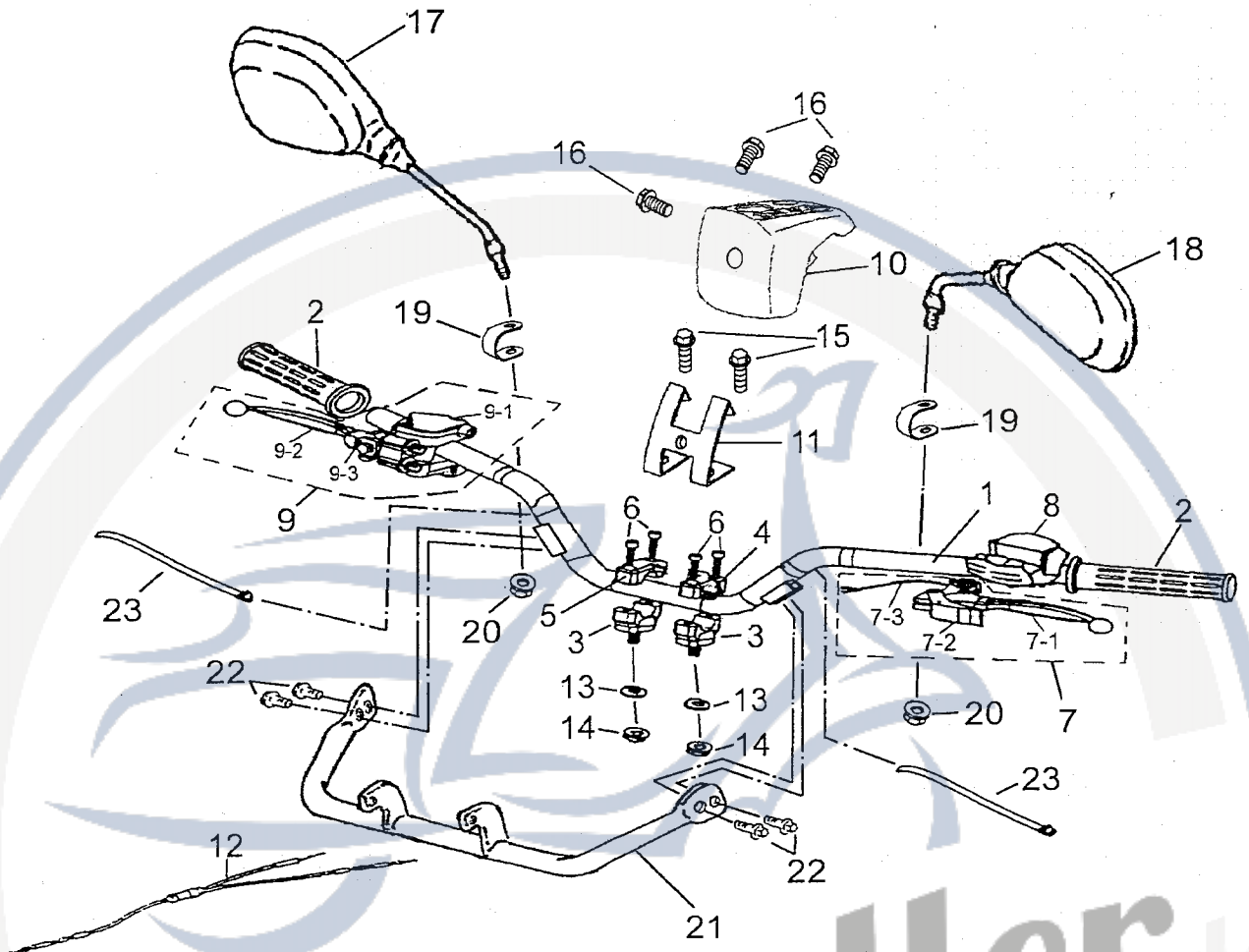
SALES MARK	P/N	DESCRIPTION	PART NO.	客戶番號	Q'TY	REMAR
販賣記號	件號	英文名稱	部品番號		用量	備註
	26-1	REAR WHEEL AXLE FIX SEAT	42805-159-000		1	雙煞車線孔
	26-2	SPACER COLLAR	42810-156-000		1	42*35.5*143.2
	26-3	BEARING	96100-6007ZZ		2	6007ZZ NTN
	26-4	OIL SEAL	96500-426208		2	42*62-8
	26-5	HEX FLANGE BOLT	96000-12038-C		2	M12*1.25*38
	26-6	REAR BRAKE CAM SHAFT	43141-156-000		1	
	26-7	REAR BRAKE ARM	43410-159-001		1	雙煞車線孔
	26-8	REAR BRAKE SHOE COMP	43120-156-001		1	
	26-9	BRAKE GUIDE	45144-156-000		1	
	26-10	HEX FLANGE BOLT	96000-06032-10C		1	M6x32
	26-11	REAR BRAKE DRUM COVER	43519-156-000		1	
	26-12	PAN PHILLIPS BOLT	93501-06010-K		3	M6X10
	26-13	REAR BRAKE DRUM	43520-156-000		1	
	26-14	BRAKE DRUM FIX WASHER	43522-156-000		2	
	26-15	REAR BRAKE CABLE-HAND	43449-159-000		1	

26-16	REAR BRAKE CABLE-FOOT	43451-159-000		1	
26-17	HEX FLANGE BOLT	96000-12032-C		2	M12*32
26-18	O-RING	91321-156-000		1	
26-19	OIL SEAL	96500-355007		1	
26-20	FLAT HEAD PHILLIPS BOLT	93902-06008-B		2	M6*8
26-21	PLAIN WASHER	94101-1225020-C		1	12.5*25*2
26-22	CONNECTER WIRE LEVELR	45452-133-000		1	
26-23	CONNECTER WIRE SEAT	45453-133-000		1	
26-24	SPRING	43421-156-000		1	
26-25	PENDAL BRAKE LEVER	43454-133-000		1	
26-26	REAR BRAKE CABLE	43450-159-000		1	
26-26-1	REAR BRAKE FIXTUBE	95015-31001		2	
26-26-2	BRAKE ADJUST NUT	95015-41000		2	
26-27	HEX NUT	94001-08000-K		4	M8*1.25
26-28	COTTER PIN	94201-24190		1	
26-29	INSERT BOLT	45421-133-000		3	
26-30	REAR COVER	40550-156-002		1	
26-31	HEX FLANGE BOLT	96000-08012-K		2	M8X12
26-32	NOISE ELIMINATION RING	43524-156-000		1	
26-33	INSERT NUT	45422-133-000		3	
26-34	HEX BOLT WITH FIX WASHER	92000-06016-K		2	M6X12
26-35	HEX NUT	94001-06000-C		1	M6
26-36	TOUCH SWITCH	34912-156-00A		1	
26-37	HEX NUT	94001-03000-K		1	M3
26-38	PAN PHILLIPS BOLT WITH WASHER	93501-03010-K		1	M3*10
26-39	HEX NUT	94001-06000-C		2	

27-9-1	R. SIDE LEVER SEAT	53176-131-000		1	
27-9-2	R. SIDE LEVELR	53175-131-000		1	
27-9-3	CABLE STABILIZER	53177-131-000		1	
27-10	HANDLE BAR UPPER POD	64213-159-000		1	
27-11	PROTECT COVER FIX PLATE	53310-156-000		1	
27-12	THROTTLE CABLE	17910-156-000		1	
27-13	PLAIN WASHER	94101-1022020-C		2	10x22x2
27-14	NYLON INSERT LOCK NUT	90350-10000-C		2	M10
27-15	HEX FLANGE BOLT	96000-06012-10K		2	M6x12
27-16	PAN PHILLIPS BOLT	93100-05012-K		3	M5x12
27-17	R.BACK VIEW MIRROR	88110-131-000		1	
27-18	L.BACK VIEW MIRROR	88120-131-000		1	
27-19	REARVIEW FIXED PIECE	88130-131-000		2	
27-20	NYLON INSERT LOCK NUT	90350-08000-C		2	
27-21	HEAD- LIGHT SUPPORT ROD	53112-159-000		1	
27-22	HEX FLANGE BOLT	96000-06012-10K		4	M6x12
27-23	STRAP	90768-151-000		2	

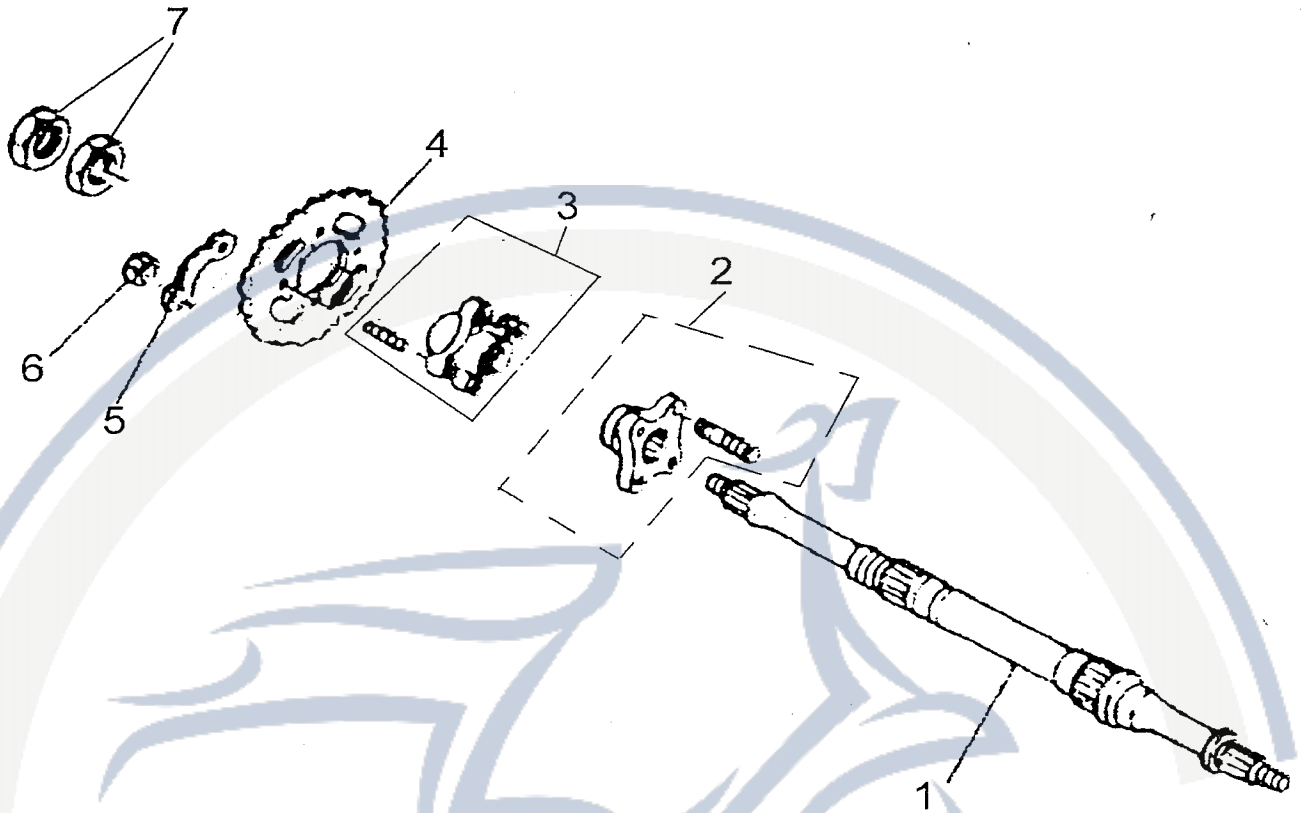
Motorroller.de
- seit 1993 -

D-27 HANDLE STEERING COMP 轉向手柄



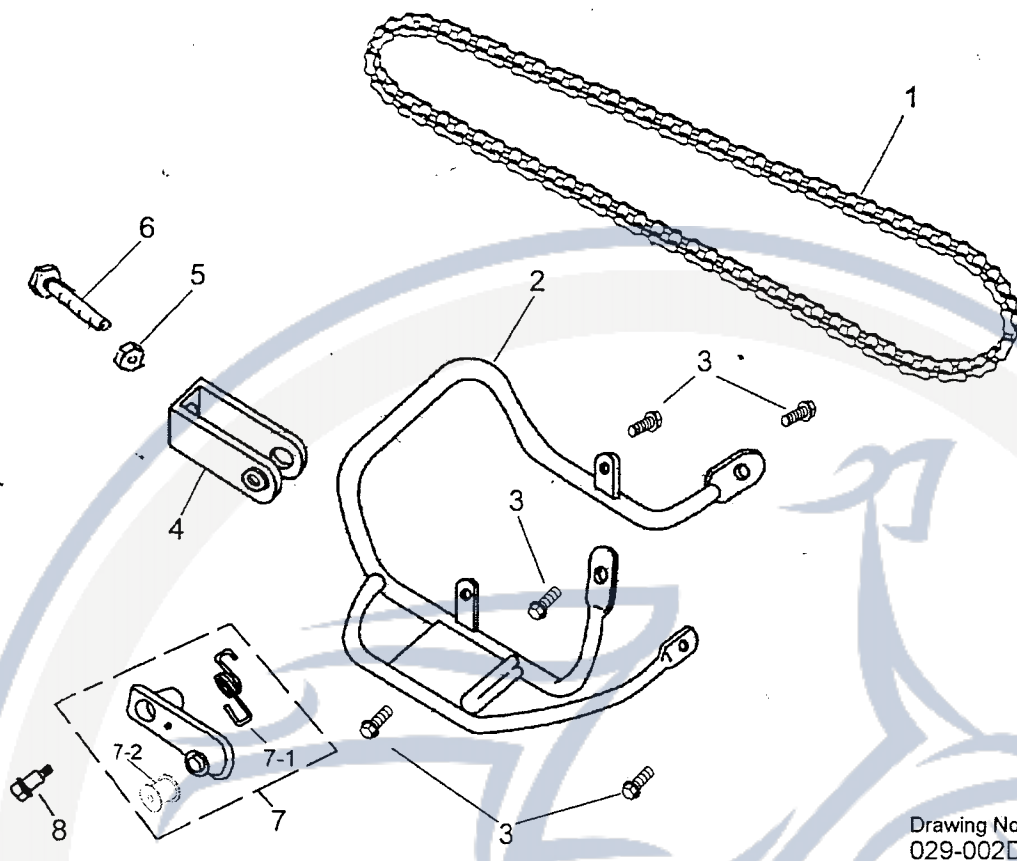
SALES MARK	P/N	DESCRIPTION	PART NO.	客戶番號	Q'TY	REMAI
販賣記號	件號	英文名稱	部品番號		用量	備註
	27-1	HANDLE BAR COMP	53100-159-000		1	
	27-2	HANDLE GRIP	53165-131-000		2	
	27-3	HANDLE BAR CLAMP SADDLE	53200-131-000		2	
	27-4	HANDLE BAR CLAMP COVER (L)	53210-131-000		1	
	27-5	HANDLE BAR CLAMP COVER (R)	53220-131-000		1	
	27-6	HEX SOCKET BOLT	91000-06025-K		4	M6x25
	27-7	LEFT LEVER ASS'Y	53171-156-001		1	
	27-7-1	L. SIDE LEVER	53178-131-000		1	
	27-7-2	HAND BRAKE PIECE	53179-131-000		1	
	27-7-3	BRAKE SENSOR SWITCH CABLE	53173-131-000		1	
	27-8	L. SWITCH ASS'Y	35151-133-000		1	
	27-9	RIGHT LEVER ASS'Y	53172-131-00A		1	有煞車感應線

D-28 REAR WHEEL AXLE 後輪軸



ALES MARK	P/N	DESCRIPTION	PART NO.		Q'TY	REMAR
圖號記號	件號	英文名稱	部品番號	客戶番號	用量	備註
	28-1	REAR AXLE	97000-156-001		1	
	28-2	CONNECTING BRAKE DRUM SEAT	97050-156-000		1	
	28-3	FINAL DRIVE SPROCKET HOLDER SET	41210-156-000		1	
	28-4	FINAL DRIVE SPROCKET	41201-156-000		1	32T 520
	28-5	FINAL DRIVE SPROCKET WASHER	41202-156-000		2	
	28-6	HEX NUT	94002-10000-C		4	M10X1.25-17
	28-7	HEX NUT	94001-33000-K		2	M33X1.5

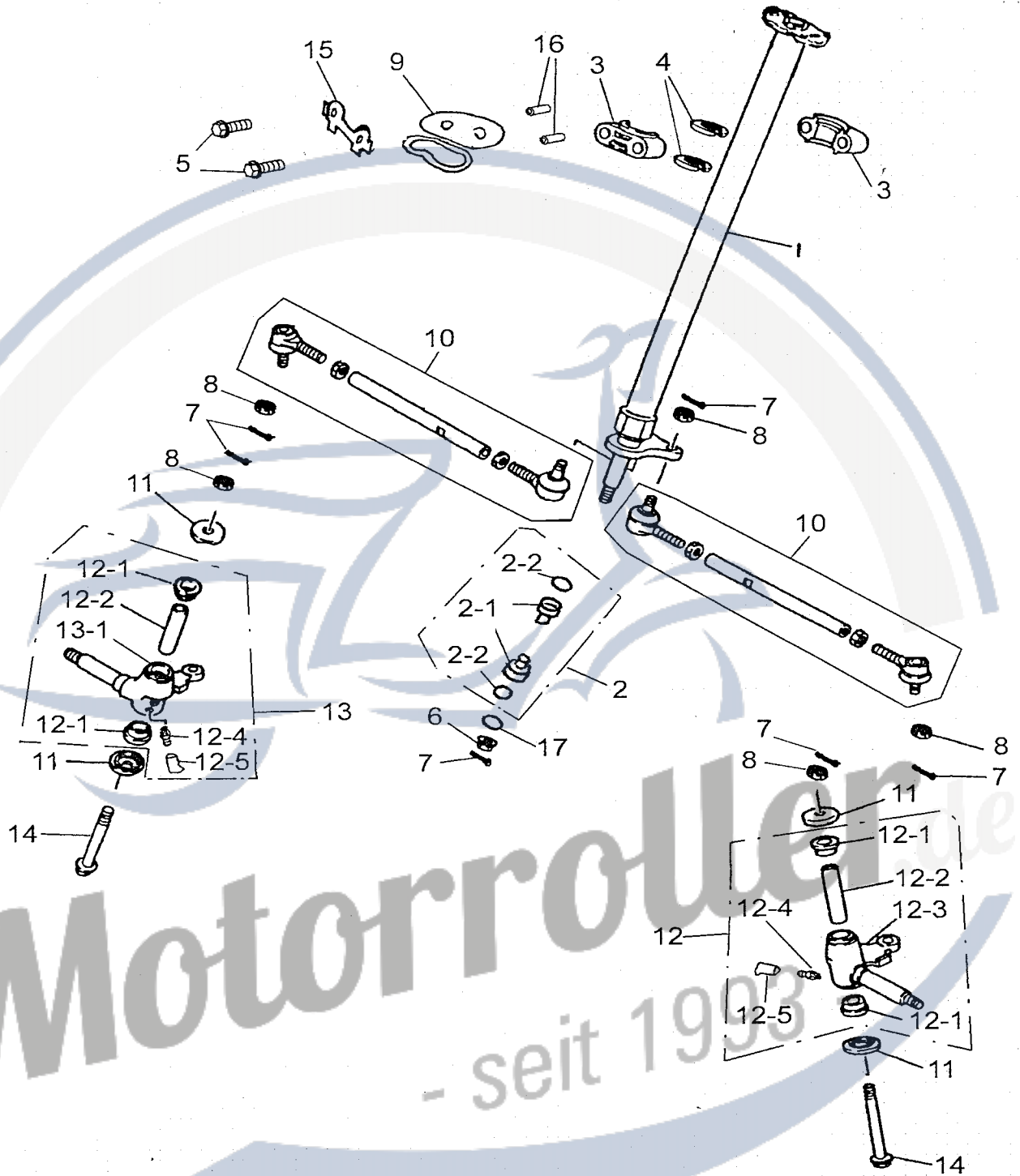
3-29 chain



Drawing No:
029-002D

SALES MARK	P/N	DESCRIPTION	PART NO.	POLARIS NO.	CHINESE	Q'TY	REMARK
販賣記號	件號	英文名稱	部品番號	客戶番號	中文名稱	用量	備註
	29-1	DRIVE CHAIN ASS'Y	40530-159-001		驅動鏈條總成	1	520;72
	29-2	PROTECT COVER	40520-156-000		後鏈輪保護蓋	1	
	29-3	HEX FLANGE BOLT	96000-08016-K		六角緣面螺栓	5	M8X16
	29-4	ADJUSTER, CHAIN	40543-156-000		鏈條調節器	1	
	29-5	HEX FLANGE NUT	94050-08000-C		六角緣面螺帽	1	M8x1.25
	29-6	HEX BOLT	B		六角螺栓 (全牙)	1	M8x60
	29-7	CHAIN SUPPORTER	40540-156-002		鏈條支撐器	1	10T
	29-7-1	RETURN SPRING	40541-156-000		彈簧	1	
	29-7-2	PLASTIC ROLLER	40545-156-000		鏈條壓輪	1	
	29-8	HEX FLANGE BOLT	90108-153-000		六角緣面螺栓	1	

D-30 STEERING 轉向組

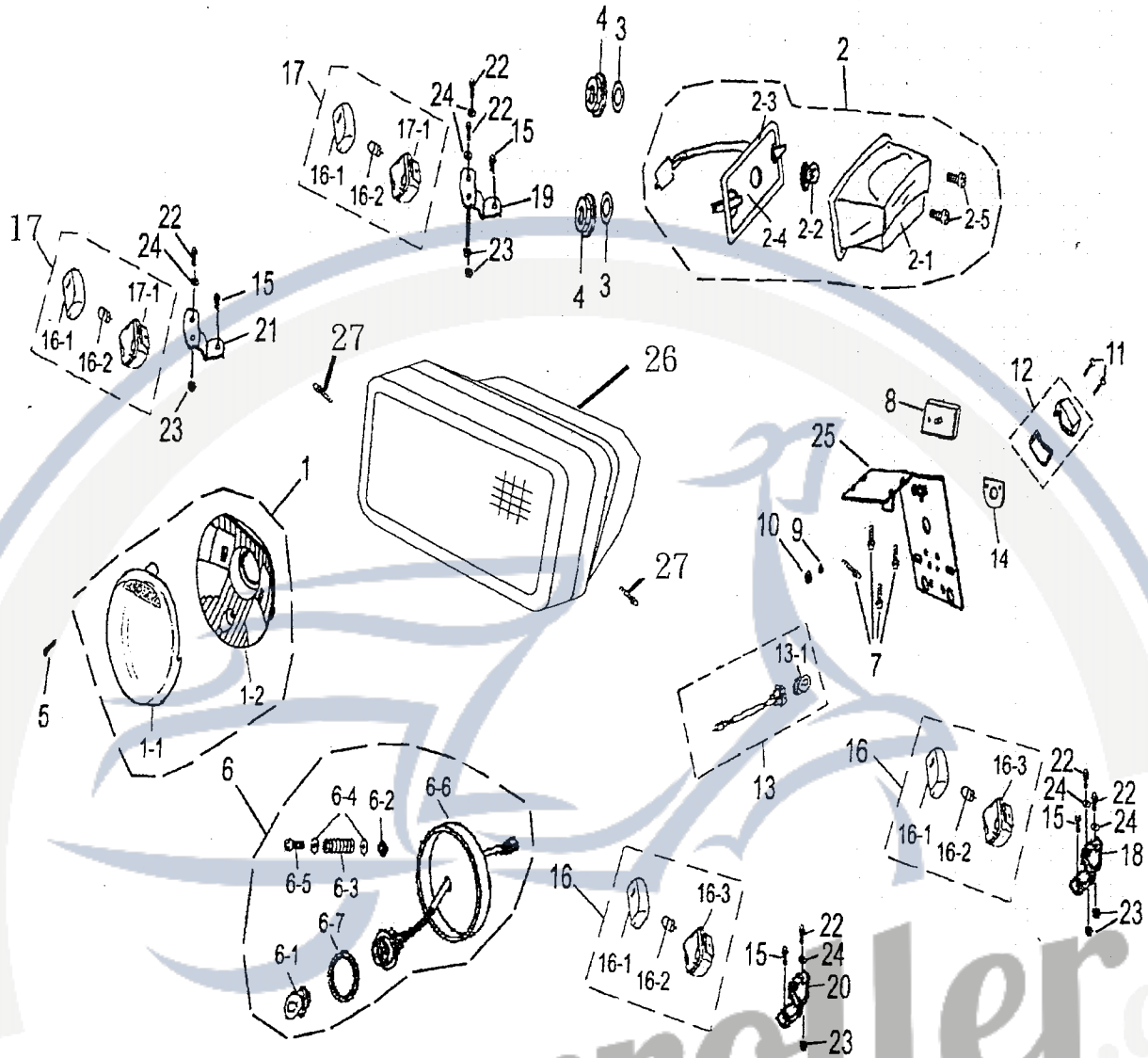


SALES MARK	P/N	DESCRIPTION	PART NO.	客戶番號	Q'TY	REMARK
販賣記號	件號	英文名稱	部品番號		用量	備註
	30-1	STEERING SHAFT	51107-158-001		1	
	30-2	STEERING BEARING SEAT SET	51115-156-000		2	
	30-2-1	STEERING BEARING SEAT	51111-156-000		2	
	30-2-2	O-RING	91322-156-000		2	15X2.5

30-3	STEERING SHAFT HOLD	53500-156-000		2	
30-4	STEERING SHAFT OIL SEAL	51220-156-000		2	31.8*37.8*4 3878#
30-5	HEX BOLT	92000-08060-B		2	M8*60
30-6	HEX FLANGE NUT WITH SERRATION	90350-14000-UC		1	M14*1.5
30-7	COTTER PIN	94201-24190		3	3/32*3/4
30-8	INSERT LOCK NUT	90352-10000-C		6	M10
30-9	CABLE FIX SEAT	51318-156-000		1	
30-10	STEERING TIE-ROD ASS'Y	53410-156-000		2	
30-11	DUST COVER	52424-156-000		4	
30-12	KNUCKLE SET (L)	51325-156-001		1	
30-12-1	KNUCKLE HOLD	51315-156-000		4	
30-12-2	SPACER RING	51316-156-000		2	10.5*17*73.5
30-12-3	KNUCKLE (L)	51310-156-001		1	
30-12-4	GREASE VALVE	51300-131-000		2	
30-12-5	GREASE VALVE RUBBER CAP	51301-131-000		2	
30-13	KNUCKLE SET (R)	51330-156-001		1	
30-13-1	KNUCKLE (R)	51320-156-001		1	
30-14	HEX FLANGE BOLT WITH HOLD	96200-10105-K		2	10*105
30-15	SPRING WASHER	51319-156-000		1	
30-16	SPACE RING	51317-156-000		2	9x14x42
30-17	PLAIN WASHER	94101-1022020-C		1	10*22*2
30-18	COTTER PIN	94201-24190		4	新增

Motorroller
- seit 1993 -

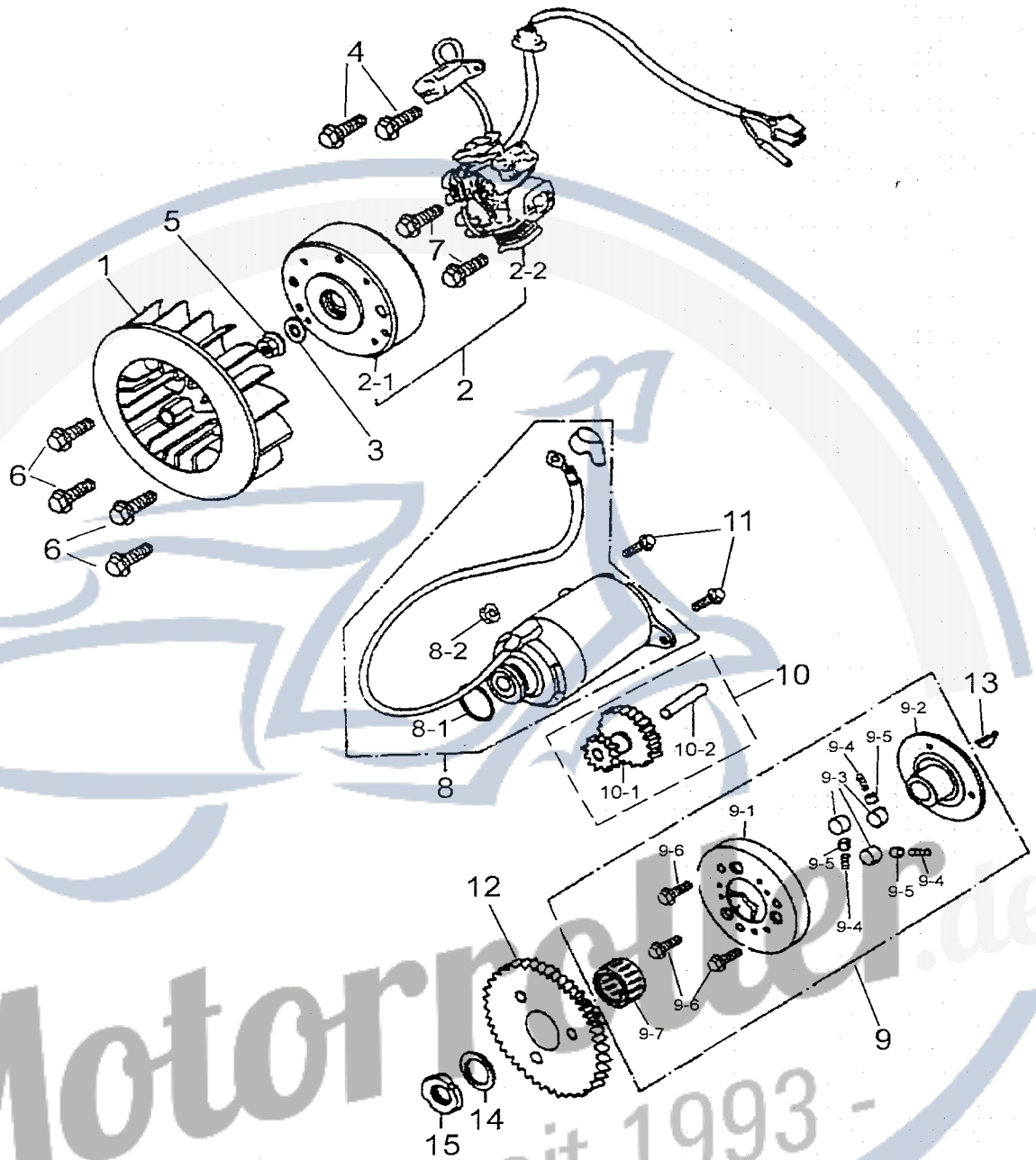
D-31 HEAD LIGHT , TAIL LIGHT 前燈、後燈



ALLES MARK	P/N	DESCRIPTION	PART NO.	POLARIS NO.	Q'TY	REMAR
買賣記號	件號	英文名稱	部品番號	客戶番號	用量	備註
	31-1	HEAD LIGHT ASS'Y	33112-156-000		2	
	31-1-1	HEAD LIGHT LENS	33103-156-000		2	
	31-1-2	HEAD LIGHT REFLECTOR	33104-156-000		2	
	31-2	TAIL LIGHT ASS'Y	33700-131-00A		1	有認證
	31-2-1	TAIL LIGHT LENS	33702-131-00A		1	有認證
	31-2-2	HEAD LIGHT BULB	33906-116-00A		1	有E-MARK 21V
	31-2-3	WATERPROOF GASKET	33716-131-000		1	
	31-2-4	REAR LIGHT SOCKET	33711-131-00A		1	有E-MARK
	31-2-5	PAN PHILLIPS BOLT	93500-04035-SUS		2	M4*35
	31-3	PLAIN WASHER	94101-0619010-C		2	φ6×φ19×1
	31-4	HEX FLANGE NUT	94050-06000-C		2	M6

31-5	TAPPING SCREW	93901-04016-B		2	M4x16
31-6	BULB ACCESSORIES ASS'Y	33106-156-000		1	
31-6-1	BULB	33107-156-000		2	
31-6-2	NUT	33108-156-000		2	
31-6-3	SPRING	33109-156-000		2	
31-6-4	PLAIN WASHER	94101-0613010-C		4	6x13x1
31-6-5	PAN PHILLIPS BOLT	93500-04028-B		2	M4x28
31-6-6	LIGHT BULB SEAT SET	33111-156-000		2	
31-6-7	RUBBER WASHER	33113-156-000		2	
31-7	HEX FLANGE BOLT	96000-06012-10K		4	M6x12
31-8	REFLECCTOR	33741-131-000		1	
31-9	PLAIN WASHER	94101-0519010-C		1	
31-10	HEX FLANGE NUT	94050-05000-C		1	
31-11	PAN PHILLIPS BOLT	93500-04040-K		2	
31-12	LICENSE LIGHT COVER	33710-131-000		1	
31-13	LICENSE LIGHT SEAT	33713-131-000		1	
31-13-1	LICENSE BULB	33709-131-000		1	12v5w
31-14	ANTI-WATER RUBBER	33707-131-000		1	
31-15	HEX FLANGE BOLT	96000-05016-K		4	M5x16
31-16	L. FRONT SIGNAT ASS'Y	33450-116-00A		2	有認證
31-16-1	FRONT SIGNAL COVER	33402-116-000		4	
31-16-2	BULB	33905-116-000		4	12V/10W
31-16-3	LEFT FRONT SINGAL SEAT	33451-116-000		2	
31-17	RIGHT FRONT SINGAL ASS'Y	33400-116-00A		2	有認證
31-17-1	RIGHT FRONT SINGAL ASS'Y	33401-116-000		2	
31-18	L. SIGNAL FIXED PLATE	33405-119-000		1	
31-19	R. SIGNAL FIXED PLATE	33404-119-000		1	有認證
31-20	L. FRONT SIGNAL FIXED PLATE	33410-159-000		1	
31-21	R. FRONT SIGNAL FIXED PLATE	33409-159-000		1	
31-22	PAN PHILLIPS BOLT	93100-05012-K		6	M5 x12
31-23	NYLON INSERT LOCK NUT	90350-05000-K		6	M5
31-24	PLAIN WASHER	94101-0514010-K		6	φ5×φ14×1mm
31-25	LICENSE BRACKET	80116-131-000		1	
31-26	HEADLIGHT ANTI-DUST COVER	33105-159-000		1	

D-32 GENERATOR, START MOTOR 發電機總成、起動馬達

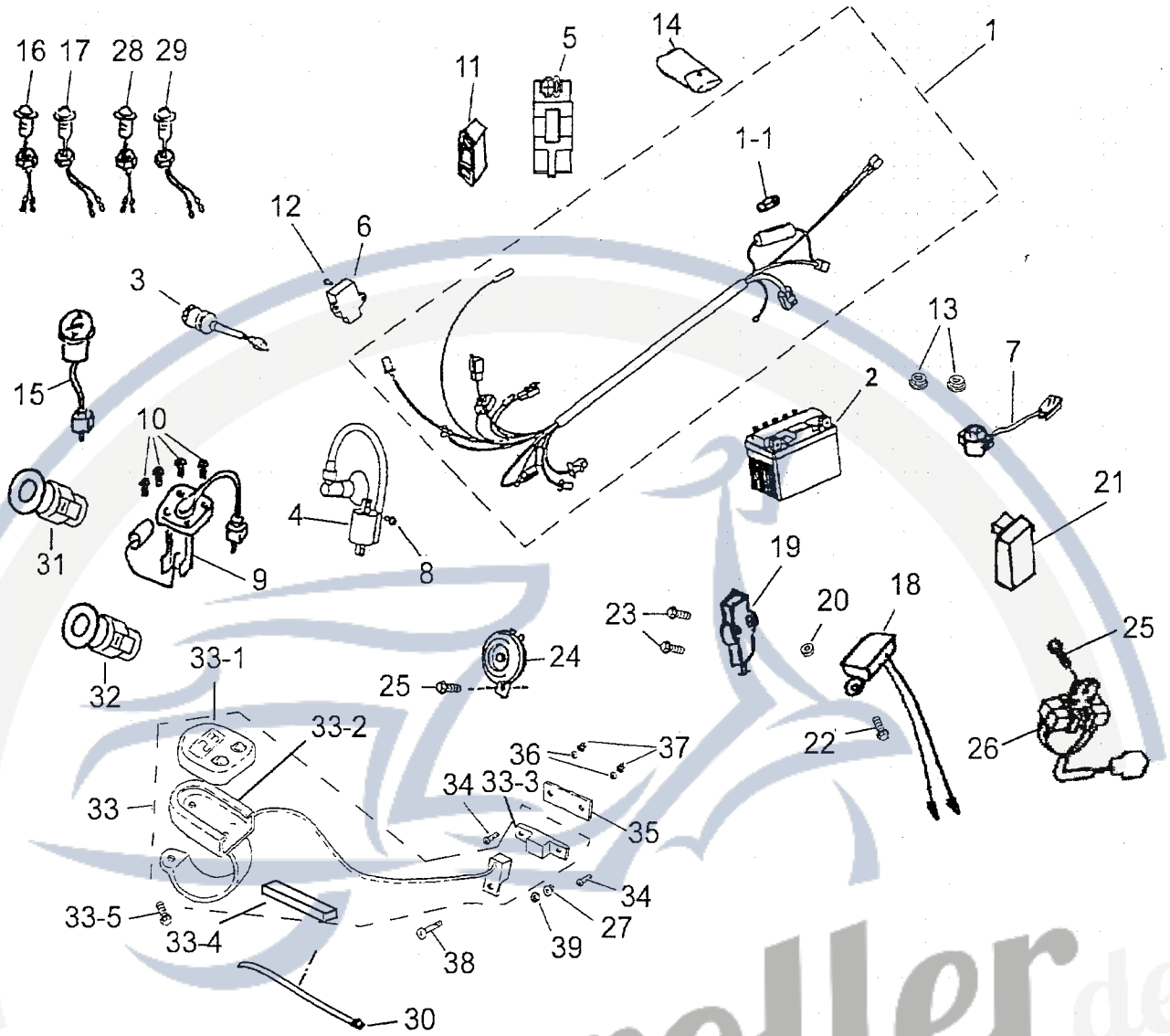


SALES MARK	P/N	DESCRIPTION	PART NO.	POLARIS NO.	Q'TY	REMAI
販賣記號	件號	英文名稱	部品番號	客戶番號	用量	備註
	32-1	FAN	19510-119-000		1	
	32-2	GENERATOR ASS'Y	31100-119-000		1	
	32-2-1	GENERATOR FACE FLY WHEEL	31110-119-000		1	
	32-2-2	STATOR COMP	31120-119-000		1	
	32-3	PLAIN WASHER	94101-1225023		1	12X25X2.3
	32-4	HEX BOLT	92000-05012-C		2	M5X12
	32-5	HEX FLANGE NUT	94050-12000-C		1	M12

32-6	HEX FLANGE BOLT	96000-06018-8C		4	M6X18
32-7	HEX FLANGE BOLT	96000-06020-8C		2	M6X20
32-8	STARTING MOTOR ASS'Y	31200-119-000		1	
32-8-1	OIL RING	31200-119-000 ⁻¹		1	
32-8-2	HEX FLANGE NUT	31200-119-000 ⁻²		1	
32-9	STARTING CLUTCH ASS'Y	28410-119-000		1	
32-9-1	CLUTCH COVER COMP	28120-119-000		1	
32-9-2	FLANGE STARTING CLUTCH	28125-119-000		1	
32-9-3	CLUTCH ROLLER	28411-119-000		3	
32-9-4	CLUTCH SPRING	28413-119-000		3	
32-9-5	CLUTCH GUIDER	28412-119-000		3	
32-9-6	HEX SOCKET BOLT	91000-06012-C		3	M6X12
32-9-7	NEEDLE BEARING	96200-283217		1	
32-10	GEAR STARTER REDUCTION ASS'Y	28422-119-000		1	
32-10-1	GEAR STARTER REDUCTION	28423-119-000		1	
32-10-2	SHAFT STARTER REDUCTION GEAR	96300-119-000		1	
32-11	HEX FLANGE BOLT	96000-06018-8C		2	M6x18
32-12	GEAR COMP STARTING CLUTCH	28220-119-000		1	
32-13	SEMICYCLE KEY	90471-119-000		1	
32-14	PLAIN WASHER	94101-2231025		1	22X31X2.5
32-15	NUT	94071-22000-C		1	M22

Motorroller.de
- seit 1993 -

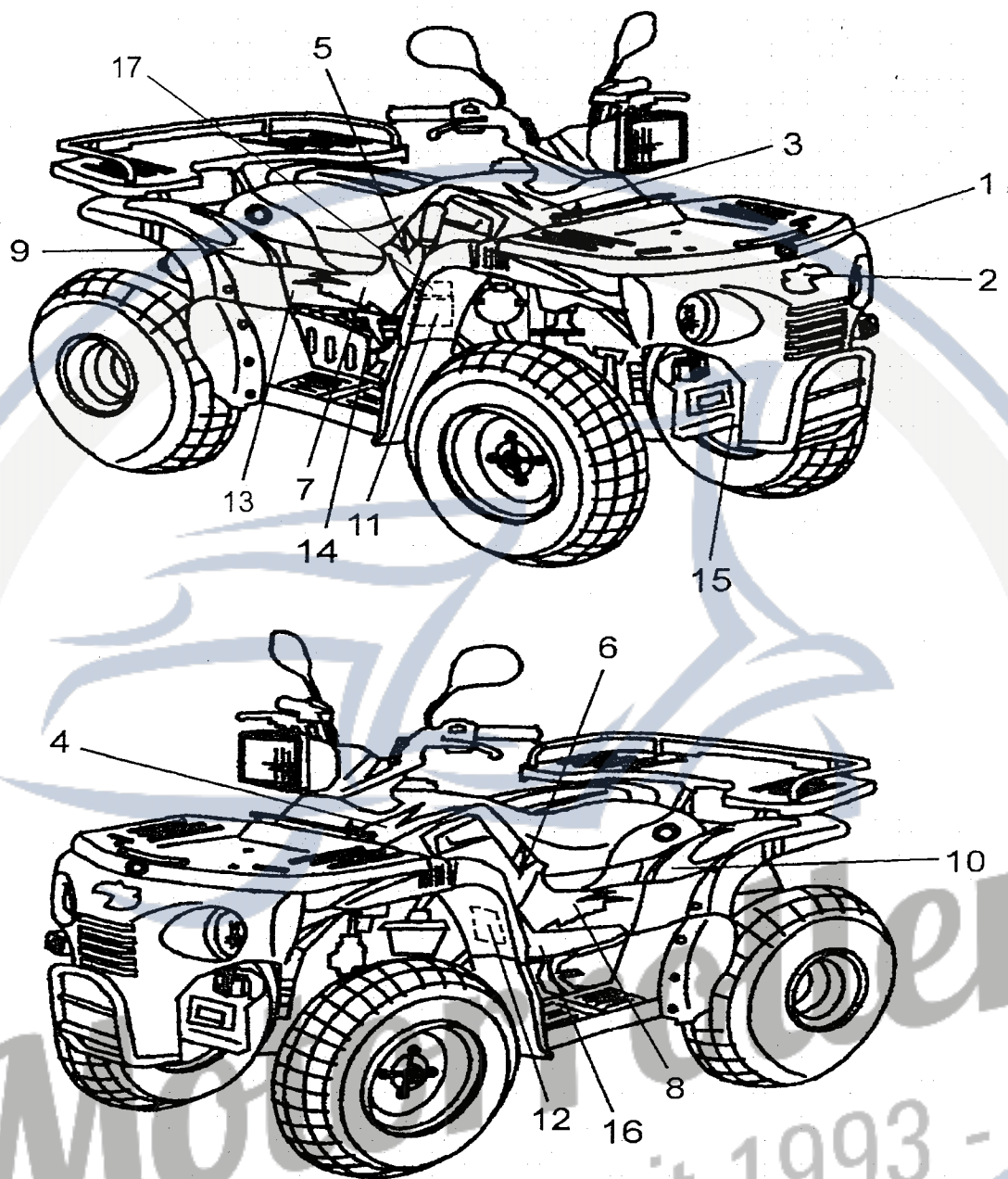
D-33 ELECTRICAL PARTS 電裝品



SALES MARK	P/N	DESCRIPTION	PART NO.	Q'TY	REMARK
販賣記號	件號	英文名稱	部品番號	用量	備註
	33-1	MAIN WIRE ASS'Y	32100-159-001	1	
	33-1-1	FUSE	98200-156-000	1	15A
	33-2	BATTERY	31500-156-000	1	9A, 乾式
	33-3	MAIN SWITCH ASS'Y	35100-131-00F	1	
	33-4	IGNITION COIL ASS'Y	30510-119-000	1	
	33-5	C.D.I. UNIT ASS'Y	30410-159-000	1	
	33-6	RECTIFIER®ULATOR	31600-119-000	1	
	33-7	STARTER RELAY ASSY.	38501-119-000	1	
	33-8	HEX FLANGE BOLT	96000-05020-C	1	M5x20
	33-9	PETROL GAUGE ASS'Y	37800-156-000	1	
	33-10	HEX FLANGE BOLT	96000-05016-K	4	M5x16
	33-11	FIX RUBBER	30411-156-000	1	

33-12	HEX FLANGE BOLT	96000-06012-10K	1	M6×12
33-13	HEX FLANGE NUT	94050-06000-K	2	M6
33-14	TOOL BAG	50120-119-000	1	
33-15	PETROL GUIDE ASS'Y	37802-156-000	1	
33-16	NEUTRAL INDICATOR	34910-158-000	1	緑
33-17	TROUBLE INDICATOR	34915-159-000	1	
33-18	TOUCH SWITCH	34912-156-001	1	
33-19	REVERSE INDICATOR SWITCH	34913-156-000	1	
33-20	HEX NUT	94001-03000-K	1	M3
33-21	INDICATOR CONTROL	34914-156-000	1	
33-22	PAN PHILLIPS BOLT WITH WASHER	93501-03010-K	1	M3×10
33-23	HEX SOCKET BOLT	91000-05016-K	2	M5×16
33-24	HORN (E-MARK)	38110-119-000	1	
33-25	HEX WASHER FACE BOLT	96000-06012-10K	2	M6×12
33-26	RESISTOR	38601-111-000	1	
33-27	NYLON INSERT LOCK NUT	90350-05000-K	1	M5
33-28	LOW BEAM INDICATOR	34907-159-000	1	
33-29	HIGH BEAM INDICATOR	34910-159-000	1	
33-30	STRAP	90768-151-000	1	
33-31	SIGNAL BUZZER	38301-111-000	1	
33-32	SIGNAL WARNER	38302-133-000	1	
33-33	SPEEDOMETER ASS'Y	37200-159-000	1	
33-33-1	PAN PHILLIPS BOLT	93500-04012-B	1	M4*12
33-33-2	HOLDER OF SPEEDOMETER	37202-159-000	1	
33-33-3	MAGNET	37203-159-000	1	
33-33-4	RUBER PAD	37204-159-000	2	
33-34	PAN PHILLIPS BOLT	93100-04016-K	2	M4×16
33-35	SPEEDOMETER FIXED PLATE	37201-159-000	1	
33-36	PLAIN WASHER	94101-0412010-K	2	4×12×1
33-37	NYLON INSERT LOCK NUT	90350-04000-K	2	M4
33-38	PAN PHILLIPS BOLT	93100-05012-K	1	M5×12
33-39	PLAIN WASHER	94101-0514010-K	1	5×14×1

D-34 DECALS 貼紙

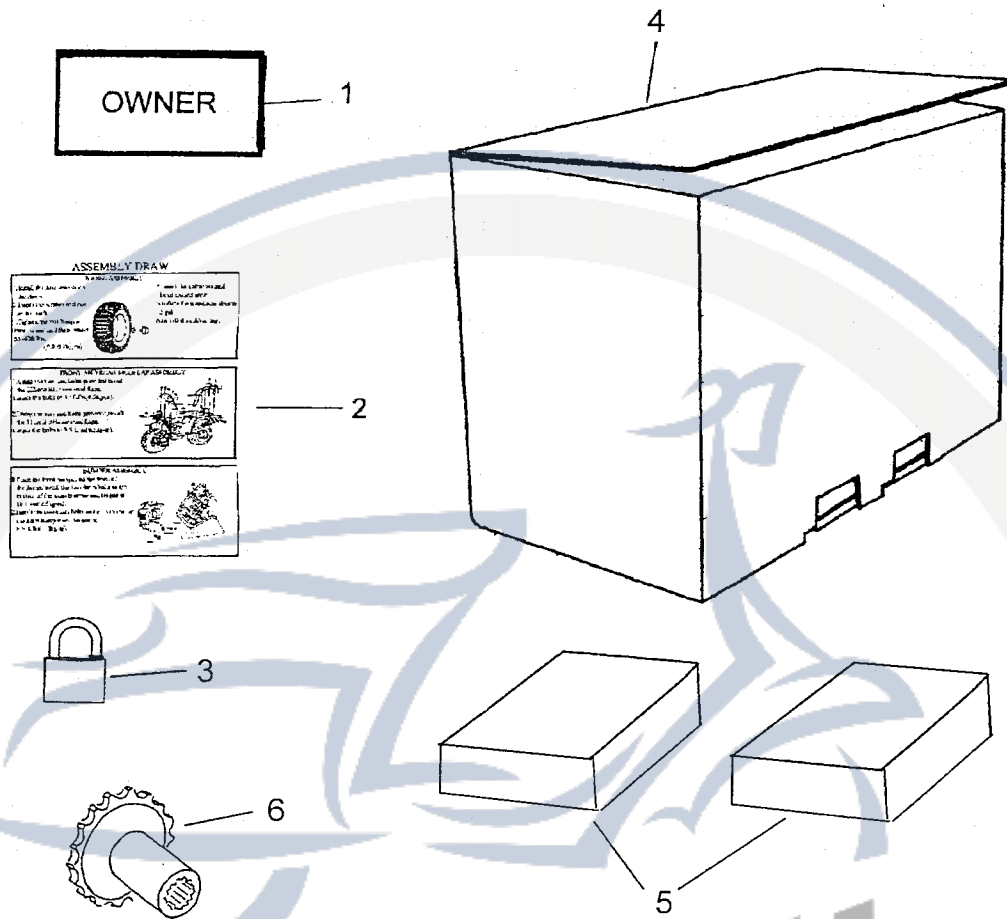


SALES MARK	P/N	DESCRIPTION	PART NO.		Q'TY	REMARK
販賣記號	件號	英文名稱	部品番號	客戶番號	用量	備註
	34-1	DECAL - KL	87711-111-00A1		1	
	34-2	DECAL - Cobra 180	87712-160-000		1	
	34-3	DECAL-FUEL TANK (R)	87720-159-000		1	
	34-4	DECAL - FUEL TANK (L)	87721-159-000		1	
	34-5	DECAL-FRONT FENDER (R)	87722-159-000		1	
	34-6	DECAL-FRONT FENDER (L)	87723-159-000		1	
	34-7	DECAL-REAR FENDER (R)	87730-159-000		1	
	34-8	DECAL-REAR FENDER (L)	87731-159-000		1	

34-9	DECAL- RIGHT REAR FENDER	87747-159-000		1	
34-10	DECAL- LEFT REAR FENDER	87748-159-000		1	
34-11	DECAL - WARING (Y-16)	87751-159-000		1	(Y-16)
34-12	DECAL - WARING	87752-159-000		1	
34-13	DECAL - WARING CHAIN	87758-156-000		1	
34-14	DECAL-TRANSMISSION	87759-156-000		1	
34-15	DECAL-VIN CODE	87771-074029		1	
34-16	DECAL-OIL	87763-159-000		1	
34-17	DECAL-REVERSE WARING	87754-156-000		1	



D-35 STANDARD ACCESSORY 隨車附件



ALLES MARK	P/N	DESCRIPTION	PART NO.	Q'TY	REMAR
原廠記號	件號	英文名稱	部品番號	用量	備註
	35-1	OWNERS MANUAL	OWNER-159	1	
	35-2	ASSEMBLY DRAW	ASS-159	1	
	35-3	LOCK	35120-159-000	1	φ10
	35-4	PACKING	89005-156-00A1	1	
	35-5	POLYSTYRENE	89010-380280165	2	
	35-6	DRIVE SPROCKET	23801-156-000	1	15T
	35-7	MAIN UNIT OF SPEEDOMETER	37205-159-000	1	

D-38 委外加工之總成

NO.1

項次	加工之零件 名稱	加工之零件 料號	數 量	加工完成之 總成料號	數量	備註
16-7	52410-156-000	後避震器搖臂	1	52405-159-001	1	
16-9	52421-131-000	潤滑油保持座	2			
16-11	52423-156-000	橡膠套	1			
26-1	42805-159-000	後輪軸固定座	1			
26-2	42810-156-000	間隔管	1			
26-3	96100-6007ZZ	軸承	2			
26-4	96500-426208	油封-OS8495	2			
26-5	96000-12038-C	六角緣面螺栓	2			
26-6	43141-156-000	後剎車凸輪軸	1			
26-7	43410-159-001	後剎車臂	1			
26-8	43120-156-001	後剎車塊組	1			
26-9	45144-156-000	剎車指示器	1			
26-10	96000-06032-10-C	六角緣面螺栓	1			
26-17	96000-12032-C	六角緣面螺栓	2			
26-18	91321-156-000	O型環168*2.4///163*2.4	1			
26-37	94001-06000-C	六角螺帽	1			
22-1	52400-156-001	後避震器	1			
22-6	52415-156-000	後避震器固定銷	1			
22-7	94201-24190	開口銷	1			
29-2	40520-156-000	後鏈輪保護蓋	1			
29-3	96000-08016-K	六角緣面螺栓	5			
29-4	40543-156-000	鏈條調節器	1			
29-5	94050-08000-C	六角緣面螺帽	2			
29-6	92000-08060-B	六角螺栓 (全牙)	2			

D-38 委外加工之總成

NO.2

項次	加工之零件 名稱	加工之零件 料號	數 量	加工完成之 總成料號	數量	備註
18-1	53030-156-001	右避震臂	1	53025-156-001	1	
18-3	53135-156-000	避震臂襯套	4			
18-8	51300-131-000	注油閥	2			
30-8	90352-10000-C	開槽六角緣面螺帽	1			
30-7	94201-24190	開口銷	1			
30-11	52424-156-000	防塵蓋	2			
30-13	51330-156-001	轉向關節組(右)	1			
30-14	96200-10105-K	六角緣面螺栓有孔	1			
18-2	53130-156-001	左避震臂	1	53125-156-001	1	
18-3	53135-156-000	避震臂襯套	4			
18-8	51300-131-000	注油閥	2			
30-8	90352-10000-C	開槽六角緣面螺帽	1			
30-7	94201-24190	開口銷	1			
30-11	52424-156-000	防塵蓋	2			
30-12	51325-156-001	轉向關節組(左)	1			
30-14	96200-10105-K	六角緣面螺栓有孔	1			
25-4	45020-156-001	前剎車盤(右)	1	45019-159-000	1	
25-1-1	96500-4052060	油封	1			
25-3	45409-159-000	前剎車搖臂(右)	1			
25-5	45141-156-000	前剎車凸輪軸	1			
25-6	45142-156-000	剎車指示器	1			
25-7	43120-111-00C	煞車塊組合	1			
25-8	96000-06032-C	六角螺栓	1			
25-9	94001-06000-C	六角螺帽	1			

D-38 委外加工之總成

NO.3

項次	加工之零件 名稱	加工之零件 料號	數 量	加工完成之 總成料號	數量	備註
25-1	45010-156-001	前剎車盤(左)	1	45009-159-000	1	
25-1-1	96500-4052060	油封	1			
25-2	45410-159-000	前剎車搖臂(左)	1			
25-5	45141-156-000	前煞車凸輪軸	1			
25-6	45142-156-000	煞車指示器	1			
25-7	43120-111-00C	剎車塊組合	1			
25-8	96000-06032-C	六角螺栓	1			
25-9	94001-06000-C	六角螺帽	1			
28-3	41210-156-000	後主鏈輪座組	1			
28-4	41201-156-000	後鏈輪	1			
28-5	41202-156-000	後鏈輪固定墊圈	2			
28-6	94002-10000-C	六角螺帽	4			
28-2	97050-156-000	剎車鞍連接座組	1	43515-156-000	1	
26-13	43520-156-000	後剎車鞍	1			
26-14	43522-156-000	剎車鞍固定墊圈	2			
26-27	94001-08000-K	六角螺帽	4			
26-32	43524-156-000	消音環	1			
26-38	93501-05008-K	十字圓頭螺絲附墊圈	4			