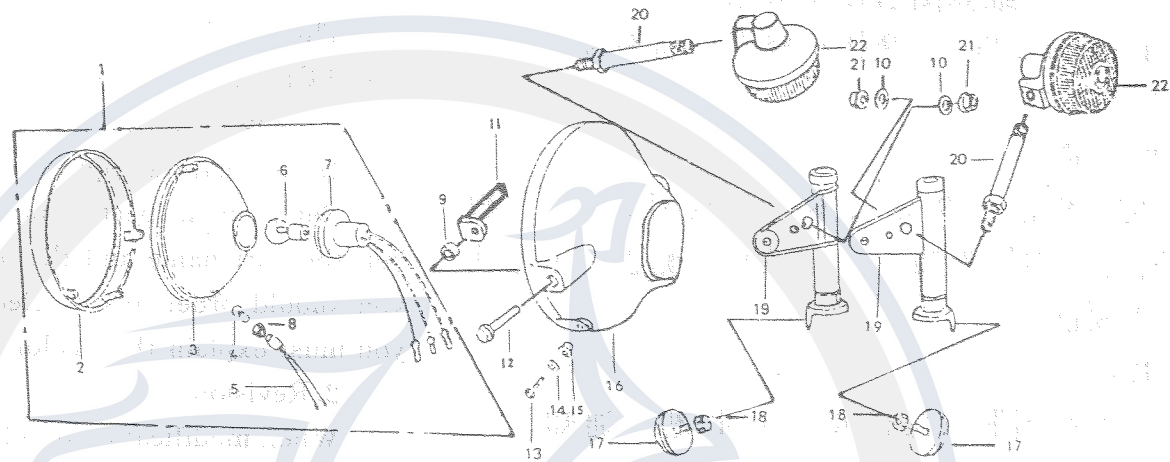


CL125—3

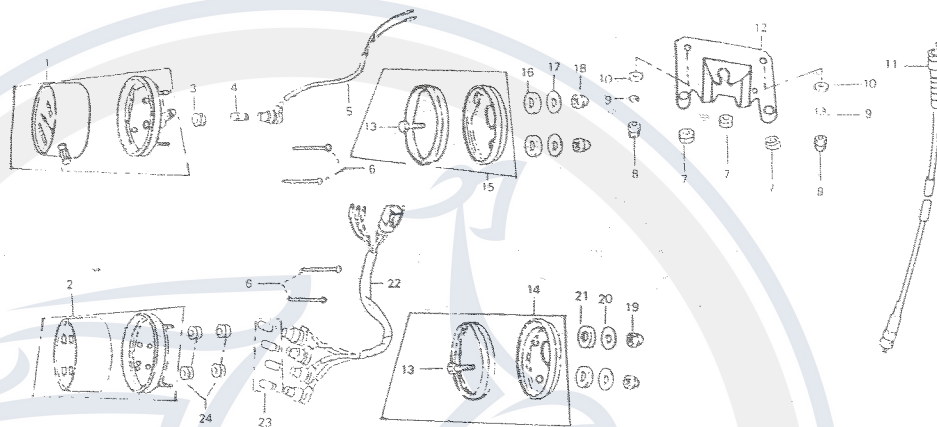
*Die Preisangaben in dieser Liste sind veraltet.
Aktuelle Preise erfahren sie auf www.motorroller.de*

图1
Fig. 1
前照灯
Headlight



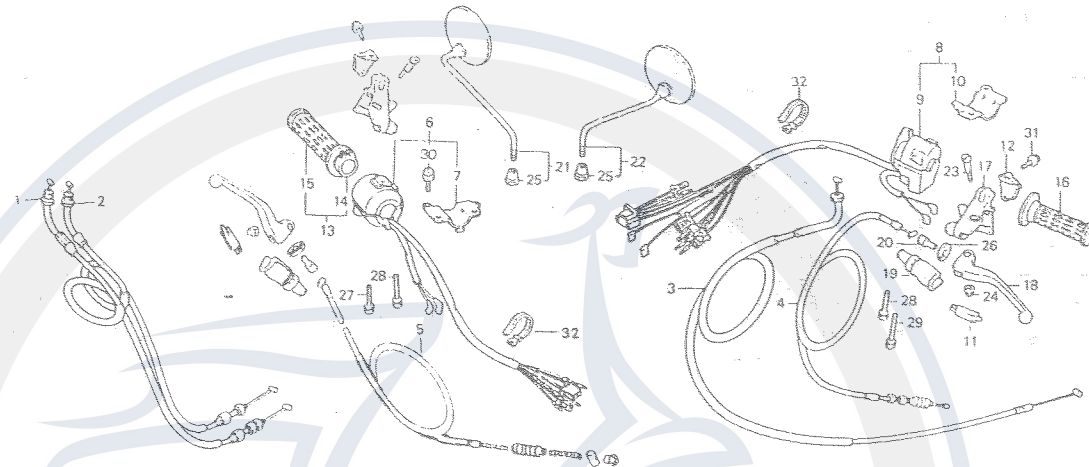
序号 No.	代号 Part No.	名称 Name	数量 Quantity
1	CL125 I · 05 · 03	前照灯总成 HEADLIGHT ASSY., (12V 35/35W)	1
2	CL125 I · 05 · 03 - 02	前框架 RIM, HEADLIGHT	1
3	CL125 I · 05 · 03 - 01	前照灯灯罩 HEADLIGHT UNIT	1
4	QB888 - 83	位置灯泡 (12V 3W) BULB, POSITON (12V 3W)	1
5	CL125 · 17 · 03 · 03	位置灯头组件 SOCKET ASSY., POSITION LIGHT	1
6	QB888 - 83	前照灯灯泡 (12V 35/35W) BULB, HEADLIGHT (12V 35/35W)	1
7	CL125 · 17 · 03 · 02	前照灯头组件 SOCKET COMP., HEADLIGHT	1
8	CL125 · 17 · 03 - 03	橡胶圈 RUBBER, JOINT	1
9	CL125 I · 05 · 03 · 02 - 02	前照灯后壳隔套 COLLAR, HEADLIGHT CASE	2
10	GB95	垫圈 10 WASHER, PLAIN, 10	2
11	CL125 I · 05 · 03 · 03	前照灯线夹 CLAMP, TACHOMETER CABLE	1
12	CL125 I · 05 · 03 - 01	螺栓 BOLT, SPECIAL FLANGE	2
13	GB818 - 85	螺钉 M5×16 BOLT, SPECIAL FLANGE, 5×16	2
14	GB93 - 87	垫圈 5 WASHER, SPRING, 5	2
15	CL125 I · 05 · 03 · 02 - 01	前照灯后壳衬套 COLLAR, SETTING	2
16	CL125 I · 05 · 03 · 02	前照灯后壳 CASE, HEADLIGHT	1
17	CL125 · 18 · 05	侧反射器组件 REFLECTOR SET, SIDE	2
18	GB6177	螺母 M8 NUT, 8	2
19	CL125 I · 05 · 03 - 01	前照灯支架 STAY, HEADLIGHT	1
20	CL125 I · 05 · 01 - 01	连接杆 POLE, CONNECTIVE	2
21	GB6177	螺母 M10 NUT, 10	2
22	CL125 I · 05 · 01	前转向灯 WINKER SET, FR.	2

图 2
Fig. 2
仪表
Meter



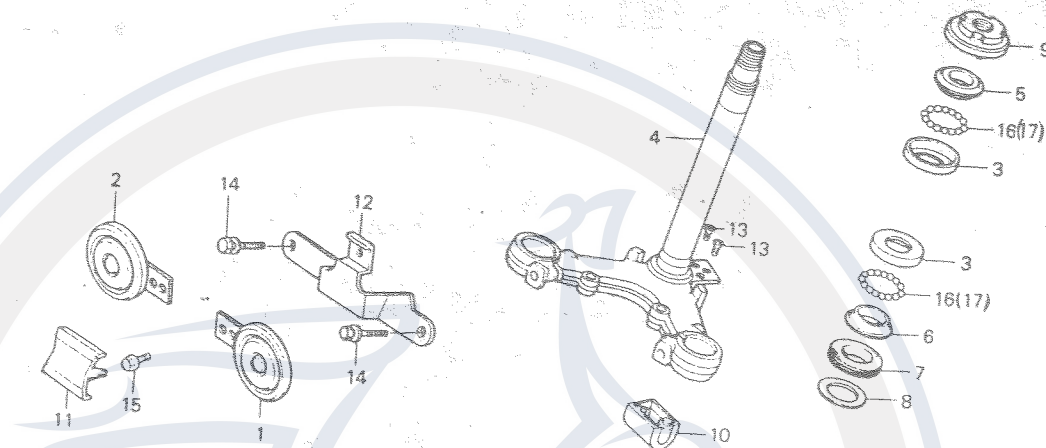
序号 No.	代号 Part No.	名称 Name	数量 Quantity
1	CL125 I · 05 · 04 - 01	里程表 SPEEDOMETER ASSY.	1
2	CL125 I · 05 · 04 - 02	指示灯表 LIGHTMETER ASSY.	1
3	CL125 I · 05 · 04 - 03	减震圈 RUBBER, HEADLIGHT MOUNTING	1
4	QB888-83	指示灯泡(12V 3W) BULB, WEDGE BASE (12V 3W)	1
5	CL125 I · 05 · 04 - 04	里程表线束 SOCKET ASSY. , POSITION LIGHT	1
6	GB845-85	螺钉 M5 SCREW, BEAM ADJUST, 5	4
7	CL125 I 05 · 04 - 05	减震圈 RUBBER, HEADLIGHT MOUNTING	3
8	CL125 I · 05 · 04 - 06	球头螺母 NUT, CAP	2
9	GB93-87	垫圈 WASHER, SPRING	2
10	CL125 I · 05 · 04 - 07	橡胶垫圈 WASHER, RUBBER	2
11	CL125 I · 05 · 04 - 08	里程计软轴组件 CABLE ASSY. , SPEEDOMETER	1
12	CL125 I · 05 · 04 - 09	支架 STAY, METER ASSY. , COMBINATION	1
13	GB5782-86	螺栓 BOLT	2
14	CL125 I · 05 · 04 - 10	指示灯下半盒总成 CASE ASSY. , METER LOWER	1
15	CL125 I · 05 · 04 - 11	里程表下半盒总成 CASE ASSY. , METER LOWER	1
16	CL125 I · 05 · 04 - 12	橡胶垫圈 WASHER, RUBBER	2
17	GB95	垫圈 WASHER, PLAIN	2
18	CL125 I · 05 · 04 - 13	球头螺母 NUT, CAP	2
19	CL125 I · 05 · 04 - 13	球头螺母 NUT, CAP	2
20	GB95	垫圈 WASHER, PLAIN	2
21	CL125 I · 05 · 04 - 12	橡胶垫圈 WASHER, RUBBER	2
22	CL125 I · 05 · 04 - 14	指示灯表线束 SOCKET COMP. , LIGHTMETER	1

图 3
Fig. 3
把手开关
Handle levre • Switch



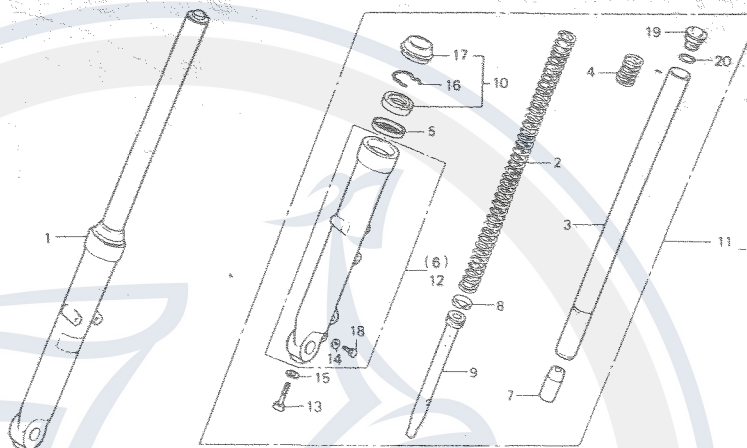
序号 No.	代号 Part No.	名称 Name	数量 Quantity
1	CL125 • 19 • 04	上油门线索 CABLE COMP. A, THROTTLE	1
2	CL125 • 19 • 05	下油门线索 CABLE COMP. B, THROTTLE	1
3	CL125 • 19 • 06	风门线索 CABLE COMP. , CHOKE	1
4	CL125 • 19 • 03	离合器线索 CABLE COMP. , CLUTCH	1
5	CL125 I • 06 • 07	前制动线索 CABLE COMP. , RFONT WHEEL	1
6	CL125 • 17 • 06 • 01	右握把开关 SWITCH ASSY. , STARTER LIGHTING KILL	1
7	CL125 • 17 • 06 - 01	衬瓦 PLATE, KILL SWITCH SETTING	1
8	CL125 • 17 • 10	左握把开关组件 SWITCH ASSY. , WINKER	1
9	CL125 • 17 • 10 • 01	左握把开关 SWITCH ASSY. , WINKER	1
10	CL125 • 17 • 10 - 01	衬瓦 PLATE, WINKER SWITCH SETTING	1
11	CL125 • 17 • 09	离合器开关 SWITCH COMP. , FR. LEVER	1
12	CL125 • 19 • 02 - 06	离合器座盖 HOLDER, MASTER CYLINDER	1
13	CL125 • 17 • 07	右把手组件 GRIP COMP. , THROTTLE	1
14	CL125 • 07 - 01	衬套 PIPE, THROTTLE GRIP	1
15	CL125 • 17 • 07 - 02	右把手胶套 GRIP, R. HANDLE	1
16	CL125 • 17 - 01	左把手胶套 GRIP, L. HANDLE	1
17	CL125 • 19 • 02 - 05	离合器座 BRACKET, HANDLE LEVER	1
18	CL125 • 19 • 02 - 04	离合器手柄 LEVER COMP. , L. HANDLE	1
19	CL125 • 19 - 02	护套 BOOT, HANDLE LEVER	1
20	CL125 • 19 • 02 - 08	线索螺钉 BOLT, WIRE ADJUSTING	1
21	CL125 I • 06 • 06	右后视镜 MIRROR ASSY. , R. BACK	1
22	CL125 I • 06 • 01	左后视镜 MIRROR ASSY. , L. BACK	1

图 5
Fig. 5
下联板
Steering stem



序号 No.	代号 Part No.	名称 Name	数量 Quantity
1	CL125 I · 05 · 02 · 02	喇叭 DL6260HM-D HORN ASSY, (HIGH)	1
2	CL125 I · 05 · 02 · 02	喇叭 DL6260HM-G HORN ASSY, (LOW)	1
3	CL125 · 18 · 03 - 01	外圈 RACE, STEERING TOP BALL	1
4	CL125 I · 04 · 03 · 01	下联板组焊件 STEM COMP., STEERING	2
5	CL125 · 18 · 03 - 02	上内圈 RACE, STEERING TOP CONE	1
6	CL125 · 18 · 04 - 01	下内圈 RACE, STEERING BOTTOM CONE	1
7	CL125 · 18 · 01 - 02	防尘圈 DUST SEAL, STEERING HEAD	1
8	CL125 · 16 - 05	垫圈 WASHER, STEERING HEAD DUST SEAL	1
9	CL125 · 18 · 01	轴承调节螺母 THREAD COMP., STEERING HEAD TOP	1
10	CL125 · 17 · 08 · 03	定向锁 LOCK, STEERING HANDLE	1
11	CL125 I · 05 · 02 - 01	喇叭盖 COVER, FR.	1
12	CL125 I · 05 · 02 · 01	喇叭支架 STAY, HORN	1
13	GB819-86	螺钉 M6×12 SCREW, U-LOCK FLAT, 6×12	1
14	CL125 I · 05 · 03 - 01	螺栓 BOLT, FLANGE	2
15	GB5787-86	螺栓 M6×12 BOLT, FLANGE, 6×12	2
16	CL125 · 18 · 03 - 03	保持架 STAY	1
17	GB308-64	钢滚珠 Ø4.7625 BALL, STEEL, Ø4.7625	2
			28

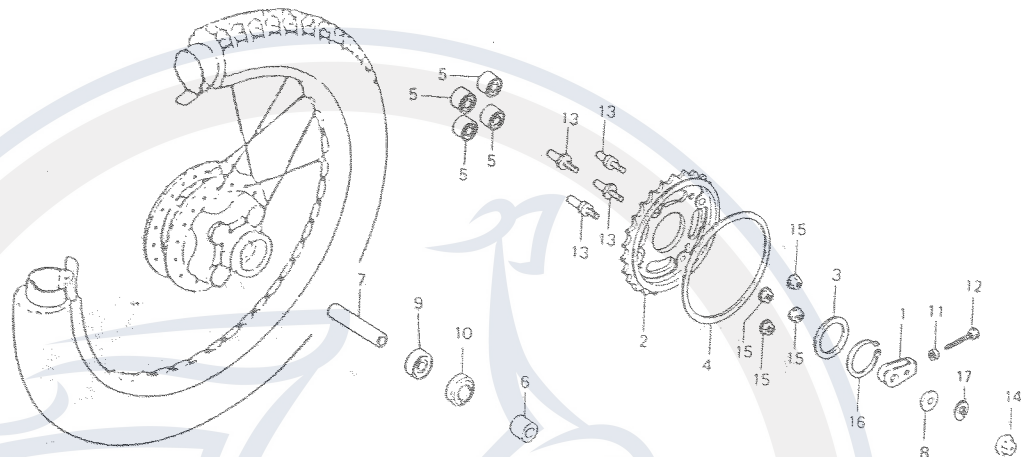
图 7
Fig. 7
前减震器
Front fork



序号 No.	代号 Part No.	名称 Name	数量 Quantity
1	CL125·16·02	右前减震器 FORK ASSY., R. FR	1
2	CL125·16·01-02	前减震器弹簧 SPRING, FR. CUSHION	2
3	CL125·16·01-03	前减震器滑柱 PIPE COMP., FR. FORK	2
4	CL125·16·01-04	回弹弹簧 SPRING, FR. CUSHION REBOUND	2
5	CL125·16·01-05	堵塞环 RING, BACK UP	2
6	CL125·16·02-01	右前减震器滑套 CASE COMP., R. BOTTOM	1
7	CL125·16·01-06	油封塞 PIECE, OIL LOCKING	2
8	CL125·16·01-07	活塞环 RING, PISTON	2
9	CL125·16·01-08	活塞 PIPE, SEAT	2
10	CL125·16·01·01	密封组件 SEAL SET, FR. FORK	2
11	CL125·16·02	左前减震器 FORK ASSY., L. FR	1
12	CL125·16·01-01	左前减震器滑套 CASE COMP., L. BOTTOM	1
13	GB70-85	内六角螺栓 M8×30 BOLT, SOCKET, 8×30	2
14	CL125·16·01-12	垫圈 PACKING, FR. FORK DRAIN COCK	2
15	CL125·16·01-11	垫圈 8 WASHER, SPECIAL, 8	2
16	CL125·16·01·01-01	卡环 RING, OIL SEAL STOP	2
17	CL125·16·01·01-02	防尘密封圈 DUST SEAL	2
18	GB5783-86	螺钉 M6×8 BOLT, HEX., 6×8	2
19	CL125·16·01-09	前减震器盖 BOLT, FR. FORK	2
20	CL125·16·01-10	O型环 23×2.8 O-RING, 23×2.8	2

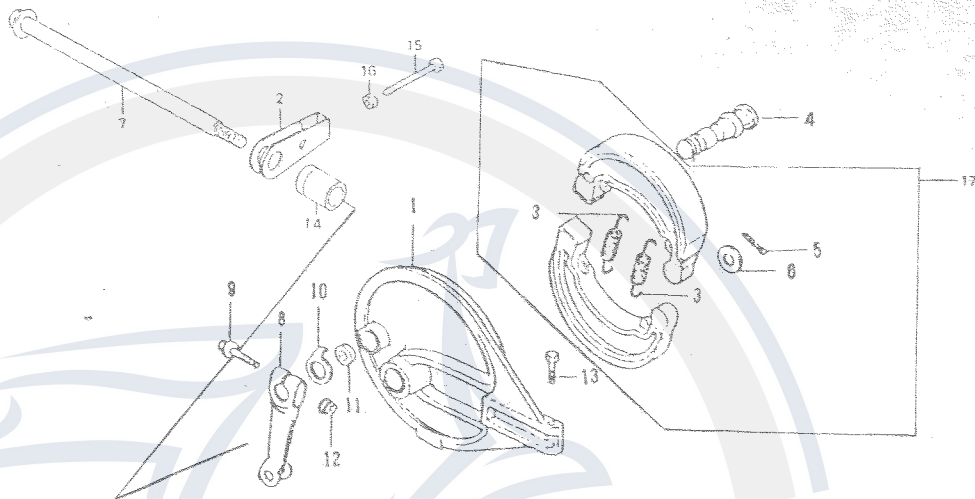
Die Preisangaben in dieser Liste sind veraltet.
Aktuelle Preise erfahren sie auf www.motorroller.de

图 10
Fig. 10
后轮
Rear wheel



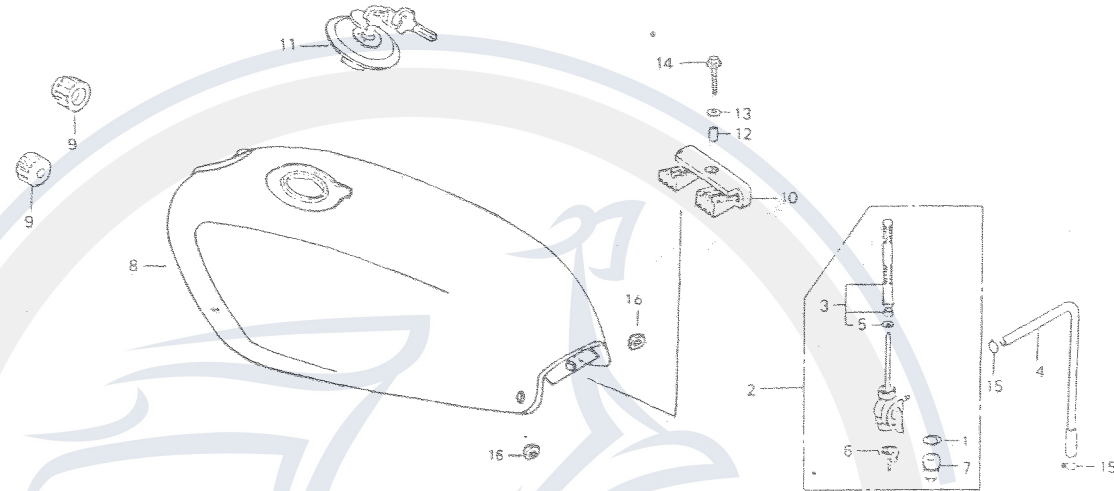
序号 No.	代号 Part No.	名称 Name	数量 Quantity
1	CL125·06·03	调节座 ADJUSTER, CHAIN	2
2	CL125·06·02	链轮组件 SPROCKET COMP., FINAL DRIVEN	1
3	CL125 I·12-03	链轮垫圈 WASHER	1
4	CL125·06·02-02	链轮附圈 ARRESTER, NOISE	1
5	CL125·06·01	缓冲套 BUSH, RR. WHEEL DAMPER	4
6	CL125 I·12·01-01	左隔套 COLLAR, RR. WHEEL SIDE	1
7	CL125·06·04	中间隔套 COLLAR, RR. WHEEL DISTANCE	1
8	GB93-87	垫圈 14 WASHER, PLAIN, 14	1
9	GB278-82	轴承 BEARING, RADIAL BALL	2
10	CL125·06-04	油封 28×42×7 DUST SEAL, 28×42×7	1
11	GB6170	螺母 M6 NUT, HEX., 6	1
12	CL125·06-10	螺栓 M6×50 BOLT, CHAIN ADJUSTING, 6×50	1
13	CL125·06-02	链轮螺栓 BOLT, DRIVEN SPROCKET FIXING	4
14	GB6177-86	螺母 14 NUT, U, 14	1
15	GB6187	螺母 M10×1.25 NUT, U, 10×1.25	4
16	GB894·2	挡圈 58 CIRCLIP, EXTERNAL, 58	1
17	GB93-87	垫圈 14 WASHER, SPRING, 14	1

图 11
Fig. 11
后制动盖
Rear brake panel



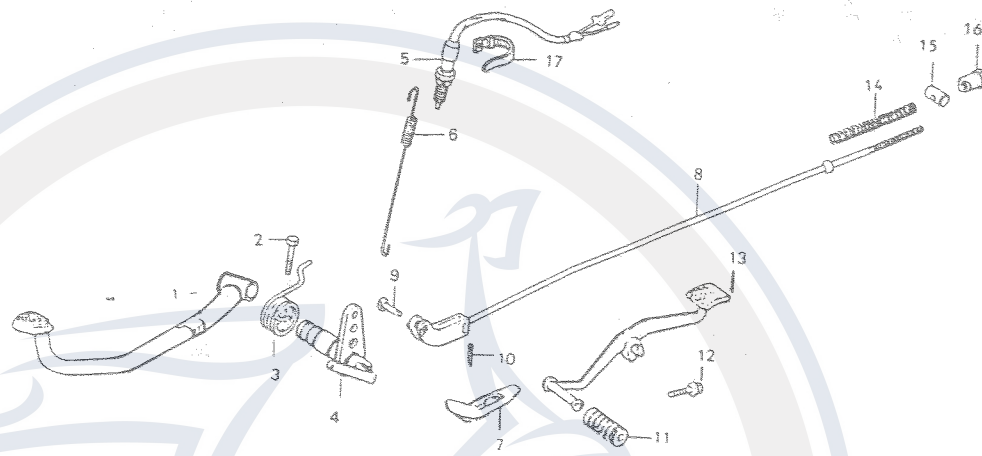
序号 No.	代号 Part No.	名称 Name	数量 Quantity
1	CL125 I · 12 · 01 · 02 · 01	后制动鼓盖 PANEL COMP., RR. BRAKE	1
2	CL125 · 06 · 03	调节座 ADJUSTER, CHAIN	1
3	CL125 · 06 · 05 - 06	拉簧 SPRING, RR. BRAKE SHOE	2
4	CL125 · 06 · 05 - 07	制动凸轮 CAM, RR. BRAKE	1
5	GB91 - 86	开口销 2×96 PIN, SPLIT, 2×96	1
6	GB6170 - 86	垫圈 8 WASHER, 8	1
7	CL125 · 06 - 08	后轮轴 AXLE, RR. WHEEL	1
8	CL125 I · 12 · 01 · 02 - 02	制动臂 ARM, RR. BRAKE	1
9	GB5787 - 86	螺栓 M6×35 BOLT, FLANGE, 6×35	1
10	CL125 · 06 · 05 - 08	指示板 INDICATOR, RR. BRAKE	1
11	CL125 · 06 · 05 - 04	油封 14×20×3 DUST SEAL, 14×20×3	1
12	GB6177 - 86	螺母 M6 NUT, FLANGE, 6	1
13	CL125 I · 12 · 01 · 02 - 01	螺栓 BOLTA, BRAKE STOPPER	1
14	CL125 I · 12 · 01 - 02	右隔套 COLLAR, RR. BRAKE PANEL SIDE	1
15	GB5787 - 86	螺栓 M6×35 BOLT, CHAIN ADJUSTING, 6×35	1
16	GB6170 - 86	螺母 M6 NUT, HEX., 6	1
17	CL125 · 06 · 05 · 01	制动蹄块 SHOE SET, BRAKE	1

图 12
Fig. 12
油箱
Fuel tank



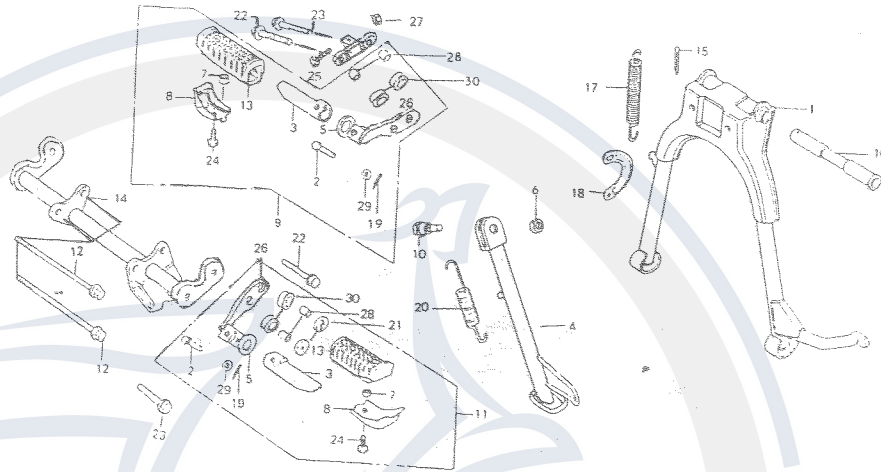
序号 No.	代号 Part No.	名称 Name	数量 Quantity
1	CL125·02·01-01	密封环 PACKING, FUEL STRAINER CUP	1
2	CL125·02·01	汽油箱开关 COCK ASSY., FUEL	1
3	CL125·02·01·01	过滤套组件 STRAINER SET, FUEL	1
4	CL125·02-10	油管 TUBE, FUEL	1
5	CL125·02·01·01-01	矩形密封圈 □-RING	1
6	CL125·02·01·02	过滤网 FILTER, CUP	1
7	CL125·02·01-02	滤腔螺帽 CUP, FUEL STRAINER	1
8	CL125 I · 07 · 01	汽油箱 TANK COMP., FUEL	1
9	CL125·02-01	汽油箱前胶垫 CUSHION, FUEL TANK FR.	2
10	CL125·02-04	汽油箱后胶垫 CUSHION, FUEL TANK RR.	1
11	CL125·17·08·02	油箱盖锁 CAP COMP., FUEL FILLER	1
12	CL125·02-02	油箱衬套 COLLAR, TOP BRIDGE	1
13	GB96-86	垫圈 8 WASHER, 8	1
14	GB5783-86	螺栓 M8×25 BOLT, HEX., 8×25	1
15	CL125·02-09	弹性管夹 CLIP, TUBE	2
16	CL125·02-03	侧盖橡胶座 GROMMET, AIR CLEANER CASE	2

图 16
Fig. 16
后制动踏杆
Pedal



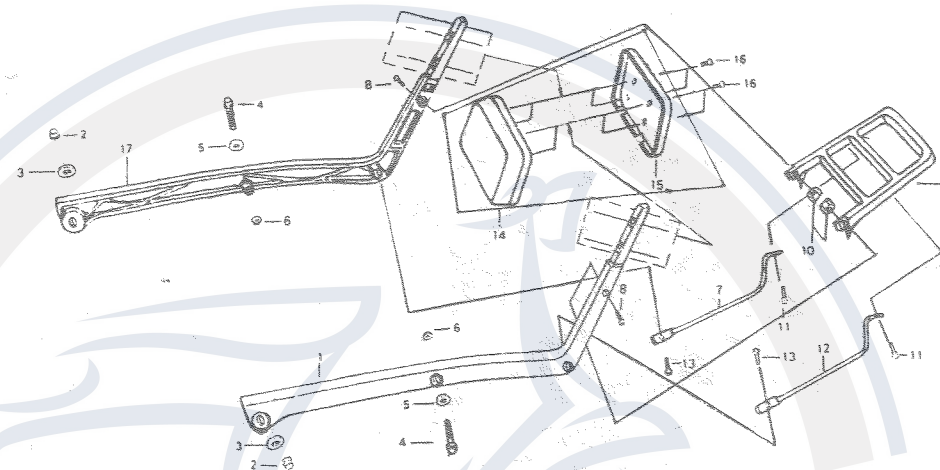
序号 No.	代号 Part No.	名称 Name	数量 Quantity
1	CL125 I · 13 · 05 · 01	后制动踏杆 PEDAL COMP., RR. BRAKE	1
2	GB5787-86	螺栓 M8×25 BOLT, HEX., 8×25	1
3	CL125 I · 13 · 05 - 01	扭簧 SPRING, BRAKE PEDAL	1
4	CL125 I · 13 · 05 · 02	支撑轴 SHAFT COMP., RR. BRAKE PIVOT	1
5	CL125 I · 17 · 14	后制动开关 SWITCH ASSY., STOP	1
6	CL125 I · 13 · 05 - 03	后制动开关拉簧 SPRING, STOP SWITCH	1
7	CL125 I · 13 · 05 - 02	橡胶垫 COVER, RR. BRAKE MIDDLE ARM	1
8	CL125 I · 13 · 05 · 03	后制动拉杆 ROD, RR. BRAKE	1
9	CL125 I · 13 · 05 - 04	销钉 PIN, JOINT	1
10	GB91-86	开口销 2×12 PIN, SPLIT, 2×12	1
11	CL125 I · 01 · 01 - 01	变速踏杆脚踏套 RUBBER, GEAR CHANGE PEDAL	1
12	GB5787-86	螺栓 M6×20 BOLT, FLANGE, 6×20	1
13	CL125 I · 01 · 01	变速踏杆 PEDAL COMP., GEAR CHANGE	1
14	CL125 · 11 - 03	弹簧 SPRING, BRAKE ROD	1
15	CL125 · 11 - 02	销轴 JOINT, BRAKE ARM	1
16	CL125 · 11 - 01	制动调节器 NUT, BRAKE ROD ADJUSTING	1
17	CL125 · 17 - 04	扎带 7×140 BAND, WIRE, 7×140	1

图 17
Fig. 17
支架和副支架
Stand



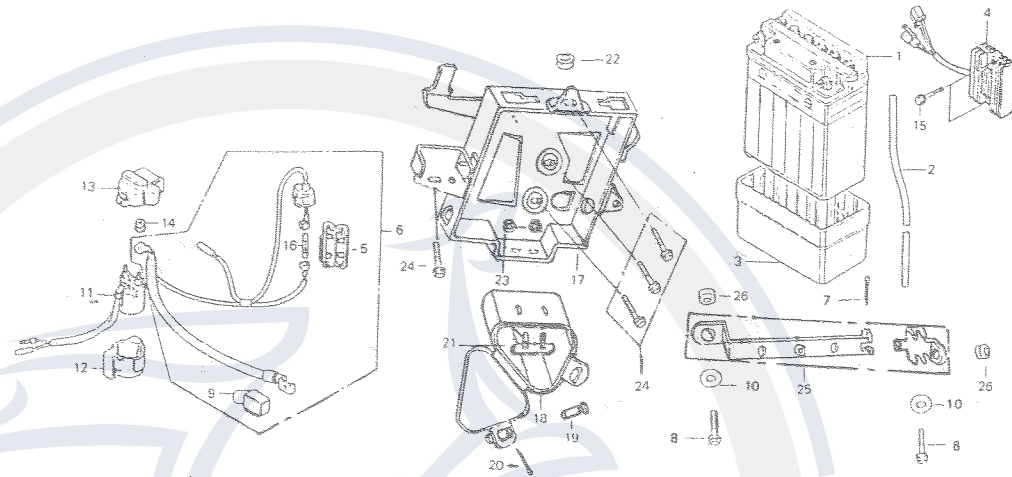
序号 No.	代号 Part No.	名称	Name	数量 Quantity
1	CL125 I · 02 · 04	支架焊接组件	STAND COMP., MAIN	1
2	GB882-86	销轴 8×35	PIN, MAIN STEP BAR JOINT, 8×35	2
3	CL125 I · 01 · 02 · 04-01	脚踏轴	BAR, MAIN STEP	2
4	CL125 I · 01 · 02 · 02	副支架杆	BAR ASSY., SIDE STAND	1
5	CL125 · 07 · 02-05	垫圈	PLATE, MAIN STEP SIDE	2
6	GB6177-86	螺母 M8	NUT, SIDE STAND, 8	1
7	CL125 · 07 · 02-02	垫圈	COLLAR	2
8	CL125 · 07 · 02-06	密封板	PLATE COMP., MAIN STEP LOWER	2
9	CL125 I · 01 · 02 · 04	右脚蹬组件	BAR ASSY., R. MAIN STEP	1
10	CL125 I · 01 · 02-01	螺栓	BOLT, SIDE STAND PIVOT	1
11	CL125 I · 01 · 02 · 01	左脚蹬组件	BAR ASSY., L. MAIN STEP	1
12	GB5787-86	螺栓 M8×130	BOLT, FLANGE, 8×130	2
13	CL125 · 07 · 02-01	脚蹬	RUBBER, MAIN STEP	2
14	CL125 I · 01 · 02 · 03	副支架组焊件	BRACKET COMP., SIDE STAND	1
15	GB91-86	开口销 3×30	PIN, SPLIT, 3×30	1
16	CL125 · 09-02	中撑轴	SHAFT, MAIN STAND PIVOT	1
17	CL125 · 09-11	中撑弹簧	SPRING, MAIN STAND	1
18	CL125 I · 02-05	中撑挂钩	HANG, MAIN STAND PIVOT	1
19	GB91-86	开口销 3.2×16	PIN, SPLIT, 3.2×16	2
20	CL125 · 10-02	弹簧	SPRING, SIDE STAND	1
21	CL125 · 07 · 02-02	垫圈	WASHER	2
22	CL125 I · 01 · 02-01	螺栓 M8×28	BOLT, FLANGE, 8×28	2

图 20
Fig. 20
后货架
Luggage carrier



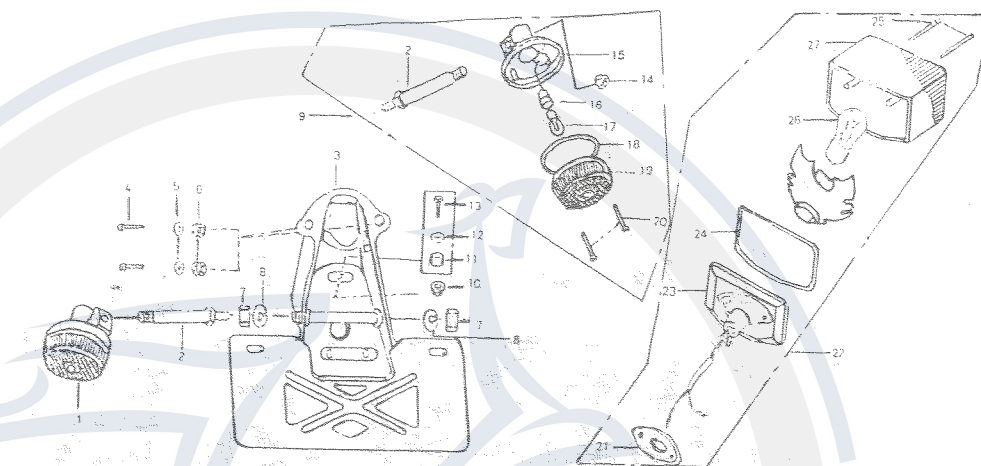
序号 No.	代号 Part No.	名称 Name	数量 Quantity
1	CL125 I · 11-01	后货架左支撑 SUPPER, L. LUGGAGE CARRIER	1
2	CL125 I · 13-02	盖形螺母 M10 NUT, CAP 10	2
3	GB97 · 1	垫圈 10 WASHER, 10	2
4	CL125 I · 00-01	螺钉 SCREW	2
5	GB97 · 1	垫圈 10 WASHER, 10	2
6	GB6170-86	螺母 M8 NUT, 8	2
7	CL125 I · 11-04	右撑杆 POLE, R. SUPPER	1
8	GB818-85	螺钉 M6×30 SCREW, TAPPING, 6×30	2
9	CL125 I · 11 · 02	后货架 LUGGAGE CARRIER	1
10	GB6170-86	螺母 M6 NUT, 6	2
11	GB5787-86	螺钉 M6×14 SCREW, 6×14	2
12	CL125 I · 11-03	左撑杆 POLE, L. SUPPER	1
13	GB5787-86	螺栓 M6×16 BOLT, 6×16	2
14	CL125 I · 11 · 01	背椅 BACK CHAIR	1
15	CL125 I · 11 · 01-05	盖 COVER	1
16	GB818	螺钉 M6×25 BOLT, 6×25	4
17	CL125 I · 11-02	后货架右支撑 SUPPER, R. LUGGAGE CARRIER	1

图 21
Fig. 21
蓄电池
Battery



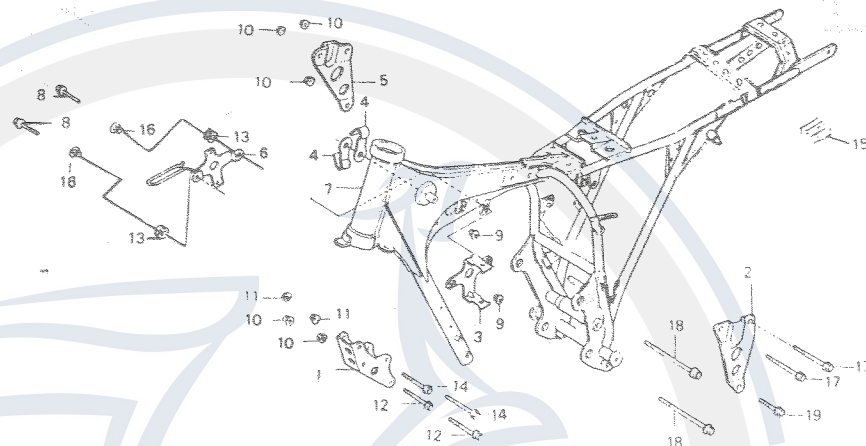
序号 No.	代号 Part No.	名称 Name	数量 Quantity	
1	CL125·17·15	蓄电池 12V-9AH	BATTERY ASSY., 12V-9AH	1
2	CL125·17·16-02	蓄电池溢流管	RUBBER, TUBE	1
3	CL125·17·16-01	蓄电池保护套	CUSHION, BATTERY	1
4	CL125·17·11·01	整流器	RECTIFIER ASSY., REGULATOR	1
5	CL125·17·12-01	保险丝盒	CASE, FUSE	1
6	CL125·17·12	副电缆	CABLE, STARIER BATTERY	1
7	GB91-86	开口销 2×14	PIN, SPLIT, 2×14	1
8	GB5787-86	螺栓 M6×25	BOLT, FLANGE, 6×25	2
9	CL125·17·12-02	蓄电池正极防护套	COUER, BATTERY	1
10	CL125 I · 02 · 02 -- 05	衬套	COLLAR	2
11	CL125·17·18	起动继电器组件	SWITCH ASSY., STARIER MAGNETIC	1
12	CL125·17·18-02	起动继电器橡胶套	RUBBER, MAGNETTC SHOCK	1
13	CL125·17·18-03	起动继电器护罩	COVER, MAGNETTC SWITCA	1
14	GB6177-86	螺母 M6	NUT, 6	1
15	GB5787-86	螺栓 M6×25	BOLT, 6×25	1
16		保险丝 12V-15A	FUSE, 12V-15A	1
17	CL125 I · 02 · 02 - 01	电池支架焊件	BATTERY HOLDER	1
18	CL125 I · 02 · 02 · 02	工具箱	TOOL BOX	1
19	CL125 I · 02 · 02 · 02 -- 01	工具箱转销	PIN, TOOL BOX	1
20	GB91-86	开口销 2.5×40	PIN, SPLIT, 2.5×40	1
21	CL125 I · 02 · 02 · 01	压板	WASH, TOOL BOX SETTING	1
22	CL125 I · 02 · 02 - 02	橡胶垫	RUBBER	1

图 22
Fig. 22
后转向灯和尾灯
Rear winker ·
Tail light



序号 No.	代号 Part No.	名称 Name	数量 Quantity
1	CL125 I · 05 · 09	向左转向灯 WINKER SET, L. RR.	1
2	CL125 I · 05 · 09-05	连接杆 POLE, CONNECTIVE	2
3	CL125 I · 02 · 03 · 02	尾灯支架 BRACKET, NUMBER PLATE	1
4	GB5782-86	螺栓 M5×25 SCREW, TAPPING, 5×25	2
5	CL125 I · 02 · 03-02	垫圈 WASHER, PLAIN	2
6	CL125 I · 02 · 03 · 02	套 RUBBER, TAILLIGHT SETTING	2
7	GB6177	螺母 M10×1.25 NUT, HEX., 10×1.25	2
8	GB93	垫圈 10 WASHER, PLAIN, 10	2
9	CL125 I · 05 · 09	向右转向灯 WINKER SET, R. RR.	1
10	GB6177-86	螺母 M6 NUT, FLANGE, 6	1
11	CL125 I · 02 · 03 · 02 · 01-02	橡胶体 RUBBER	1
12	GB96-86	垫圈 6 WASHER, PLAIN, 6	1
13	GB5782-86	螺栓 M6×25 BOLT, SPECIAL FLANGE, 6×25	1
14	GB6177	螺母 M10×1.25 NUT, FLANGE, 10×1.25	2
15	CL125 I · 05 · 09-03	右后转向灯座 BASE COMP., RR. WINGER	2
16	CL125 I · 05 · 09-04	橡胶圈 RUBBER, JOINT	2
17	GB888-83	转向灯泡 (12V 10W) BULB, WINKER (12V 10W)	2
18	CL125 I · 05 · 09-02	转向灯密封垫 GASKET, LENS	2
19	CL125 I · 05 · 09-01	转向灯盖 LENS, WINGER	2
20	GB845-85	螺钉 ST2.9×24 SCREW, TAPPING, 2.9×24	4
21	CL125 I · 05 · 10-02	橡胶垫 RUBBER PLATE	1
22	CL125 I · 05 · 10	尾灯 TAILLIGHT UNIT	1

图 25
Fig. 25
车架
Frame body



序号 No.	代号 Part No.	名称 Name	数量 Quantity
1	CL125·13-01	发动机挂脚 PLATE,FR. ENGINE HANGER	1
2	CL125·13·02	发动机吊装板(左) PLATE,L. ENGINE UPPER HANGER	1
3	CL125·17·11·03	点火线圈支架 STAY,IGNITION COIL	1
4	CL125·19-01	管系搭子 CLIP,CLUTCH CABLE	2
5	CL125·13·01	发动机吊装板(右) PLATE,R. ENGINE UPPER HANGER	1
6	CL125·17·11·02	整流圈支架 STAY,REGULATOR	1
7	CL125 I·02·01	车架组焊件 BODY COMP.,FRAME	1
8	GB5782-86	螺栓 M6×25 BOLT, FLANGE,6×25	2
9	GB6187-86	螺母 M10×1.25 NUT,FLANGE,10×1.25	2
10	GB6177-86	螺母 M8 NUT,FLANGE,8	5
11	GB6177-86	螺母 M8 NUT,FLANGE,8	2
12	GB5787-86	螺栓 M8×60 BOLT, FLANGE,8×60	2
13	CL125·17·11-02	电气支架橡胶垫 RUBBER,SIDE MOUNTING	2
14	GB5787-86	螺栓 M8×65 BOLT, FLANGE,8×65	2
15	CL125 I·02-03	缓冲块 RUBBER	1
16	CL125·17·11-01	电气支架衬套 COLLAR,SIDE MOUNTING	2
17	GB5787-86	螺栓 M8×75 BOLT, FLANGE,8×75	2
18	CL125·13-04	螺栓 M10×1.25 BOLT,FLANGE,10×1.25	2
19	GB5787-86	螺栓 M8×35 BOLT, FLANGE,8×35	1

Die Preisangaben in dieser Liste sind veraltet.
Aktuelle Preise erfahren sie auf www.motorroller.de

